



2012 ISAT & IAA Assessment Network & Pre-Test Information

Kathy Johnson, Pearson
Dennis Goedecke, ISBE
Jessica Dare, ISBE

100 North First Street, E-216
Springfield, Illinois 62777

1-866-317-6034

www.isbe.net/assessment



For Your Convenience

- ▶ Assessment Network Activities & Pre-Test Information
- This PowerPoint presentation:
- The 2012 ISAT & IAA Reference Guide
- 2012 ISAT & IAA Reference Guide: Assessment Network Activities & Pre-Test Information

www.isbe.net/assessment/isat.htm or
www.isbe.net/assessment/iaa.htm



Important Information 2011-2012

- The writing assessment has been suspended again for the spring 2012 ISAT & IAA assessments for grades 3, 5, 6, and 8. **New for 2012 Grade 11 IAA will NOT be assessed in writing.**
- ISAT Users – All information that is placed in the enrollment table for special format test materials (Braille, large-print, reader scripts, audio test versions, and linguistically modified -- Form LM), should be entered as the NUMBER OF STUDENTS ENROLLED that require a special format test version.
- Sample Test Books – available on-line only. **NOTE: 2012 Sample Test Books are not being created, please use the 2011 Sample Test Book posted on ISBE's website.**



IMPORTANT DATES

ISAT & IAA Assessment Network Activities



PEARSON



These Activities Are REQUIRED ACTIVITIES!

OCTOBER 31, 2011 – DECEMBER 21, 2011

ISAT & IAA Test Coordinators

- Activate Accounts in Pearson's Assessment Network
- Update Profile Information

ISAT Test Coordinators

- Enter Special-Format Test Enrollment Numbers

**Refer to page 3 of the Reference Guide for all
Important Dates**



ISAT Materials

- Test Windows

ISAT TEST MATERIAL DELIVERY/PICK UP						
	EARLY TESTERS		REGULAR TESTERS		LATE TESTERS	
Test Windows	February 27, 2012	March 9, 2012	March 5, 2012	March 16, 2012	March 12, 2012	March 23, 2012
	net	nlt	net	nlt	net	nlt
Non-Secure	February 3, 2012	February 10, 2012	February 10, 2012	February 17, 2012	February 17, 2012	February 24, 2012
Secure	February 10, 2012	February 17, 2012	February 17, 2012	February 24, 2012	February 24, 2012	March 2, 2012
ISAT Test Material Pick Up	--	March 16, 2012	--	March 23, 2012	--	March 30, 2012

ISAT Early and Late Test Windows

To be eligible to test the Early or the Late test window, districts should have submitted a Testing Window Modification form to ISBE on or before December 1, 2011.

ISAT Material Delivery

Test materials will be delivered in two (2) shipments – non-secure and secure, and will be delivered based on your testing window.

ISAT Material Pick Up

Test material pick ups are pre-scheduled by Pearson, one week from your last day of testing. There will be one (1) pick up scheduled for both scoreable and non-scoreable materials.





IAA Materials

- Test Windows

IAA TEST MATERIAL DELIVERY/PICK UP		
	net ⁽³⁾	nit
Test Window	February 20, 2012	March 16, 2012
Test Material Delivery	On or before February 6, 2012	
IAA Test Material Pick Up ⁽⁴⁾	March 21, 2012	
Sample Tasks	Available on-line only! ⁽⁵⁾	

IAA Test Window

There will be only one test window for IAA. Testing must be done starting no earlier than February 20, 2012 and must be completed no later than March 16, 2012.

March 16, 2012 is also the deadline for entering IAA scores online.

IAA Material Delivery

Test materials will be delivered in one shipment.

IAA Material Pick Up

Test material pick up will be March 21, 2012.





ASSESSMENT NETWORK

a.k.a. PEMS Solutions Schoolhouse



PEARSON



Interactive Frequently Asked Questions



PearsonAccess Illinois ISAT & IAA

PEMSolutions



- ▶ Update Your PROFILE
- ▶ Review and Enter ISAT Enrollment Numbers
- ▶ Review Test Materials Quantities (IAA)
- ▶ Order Additional Test Materials
- ▶ Track Test Material Shipments
- ▶ Confirm Test Material Shipments

[Go to PEMSolutions](#)

Related Links

[Illinois State Board of Education](#)

[Illinois State Board of Education
ISAT Assessment](#)

[Illinois Alternate Assessment](#)

[FREQUENTLY ASKED QUESTIONS](#)



Latest News & Announcements

Illinois Customer Support

1-888-705-9413, Monday thru Friday

6:00 am - 7:00 pm (CDT)

ISAT@support.pearson.com

iaa_pearson@support.pearson.com



Copyright © 2011 Pearson Education, Inc. or its affiliate(s). All rights reserved.



Select IAA or ISAT, and then click on SEARCH.

Note: There are multiple layers to the search engine.

Support Knowledgebase - Windows Internet Explorer

https://support.pearsonaccess.com/kaidara-advisor/pages/bookmark.jsp

File Edit View Favorites Tools Help

Support Knowledgebase

Logout

Category Search **WordSearch**

SEARCH BY...

Select an option below

< PREV. RESET SEARCH SKIP NEXT >

PLEASE ANSWER THIS QUESTION

Which test administration do you require assistance with? (Click the '+' sign to see specific assessments)

Illinois (46 solutions)

- IAA (8 solutions)
- ISAT (40 solutions)

CURRENT SEARCH

< PREV. RESET SEARCH SKIP NEXT >

Solutions 46 solutions

1

Select: [None](#) [All in page](#) [All results](#) (0 solutions selected)

- [Not listed in Pearson's Assessment Network as Superintendent/Chicago Principal \(etc\); ISAT Test Coordinator; Secondary District ISAT Test Coordinator](#)
ISAT, PROFILE, SECURITY/LOGIN.
- [Changes in a student's IEP or 504 status; do you use the pre-ID label received?](#)
ISAT, RESOURCES, POLICY, PRE-ID.
- [When will my Spring 2012 ISAT Additional Materials arrive?](#)
ISAT, MATERIALS, GETTING TEST MATERIALS.
- [TEST MATERIALS - Large-Print](#)
ISAT, MATERIALS.
- [TEST MATERIALS - Braille](#)
ISAT, MATERIALS.
- [TEST MATERIALS - General](#)
ISAT, MATERIALS.
- [ISAT Reports - Are they available from previous test administrations?](#)
ISAT, REPORTS.
- [I am a parent of a child in the Chicago 299 school system and I need to know about graduation, retention, summer school.](#)
ISAT, TEST SETUP.

Select: [None](#) [All in page](#) [All results](#) (0 solutions selected)

1

Copyright 2010 Pearson Education, Inc. All rights reserved.





Assessment Network User ID & Passwords

Reference Guide: Page 7



USER ID: IL123456

PASSWORD: ABcd123Xyz

- User IDs & Temporary Passwords were mailed the week of October 17, along with a copy of the *2012 ISAT & IAA Reference Guide*. You will be asked to change your Temporary Password to something you designate
- The 2011-2012 Assessment Network User ID is **not** the same User ID used in 2010-2011
- There are up to two (2) User IDs and Passwords issued to each district and Chicago School. One (1) is assigned to the ISAT Test Coordinator, the other is for the IAA Test Coordinator.



PearsonAccess Illinois ISAT & IAA

PEMSolutions



- ▶ Update Your PROFILE
- ▶ Review and Enter ISAT Enrollment Numbers
- ▶ Review Test Materials Quantities (IAA)
- ▶ Order Additional Test Materials
- ▶ Track Test Material Shipments
- ▶ Confirm Test Material Shipments

[Go to PEMSolutions](#)



Related Links

[Illinois State Board of Education](#)

[Illinois State Board of Education
ISAT Assessment](#)

[Illinois Alternate Assessment](#)

[FREQUENTLY ASKED QUESTIONS](#)

Latest News & Announcements

Illinois Customer Support
 1-888-705-9413, Monday thru Friday
 6:00 am - 7:00 pm (CDT)
ISAT@support.pearson.com
iaa_pearson@support.pearson.com





Assessment Network Account Activation

Reference Guide: Page 7

User ID: IL351394

* New Password:

* Confirm New Password:

* - Required

User ID: IL123456

*First Name:

*Last Name:

* E-mail Address:

* - Required

First Time You Log In – Change Your Password

You **MUST** change your temporary password. Keep your new password secure, because if you forget it, your account will have to be reset and a new temporary password will have to be assigned.

The first time you log into your Assessment Network account, you will need to activate it.

To do this you **MUST**:

- Enter the First and Last Name of the person responsible for ALL ISAT or IAA activities.
 - Enter a VALID e-mail address. All communications regarding the ISAT or IAA test administration will be sent to this individual.





PROFILE

Updating Your Contact & Shipping Information



PEARSON



**ISAT TEST COORDINATOR
TEST MATERIAL SHIPPING ADDRESS**

SECONDARY DISTRICT ISAT TEST COORDINATOR
**** Optional but recommended ****
Back-up District Coordinator

The individual listed in this profile will be the primary contact for all ISAT related matters. The address ⁽¹⁾ provided will be where ISAT test materials will be delivered and picked up from after testing is completed.
A VALID E-MAIL ADDRESS IS REQUIRED!

The individual listed in this profile will be the backup contact for ISAT related matters. This is an individual designated by the ISAT Test Coordinator.

In addition to a name and telephone,
A VALID E-MAIL ADDRESS IS REQUIRED!

- District Superintendent
- Chicago District 299 School Principal
- Special Education Cooperative Director
- Regional Superintendent/ISC Executive Director
- Private School District Administrator

**IAA TEST COORDINATOR
TEST MATERIAL SHIPPING ADDRESS**

The individual listed in this profile will be the primary administrator for your educational entity.

In addition to name and telephone,
A VALID E-MAIL ADDRESS IS REQUIRED!

The individual listed in this profile will be the primary contact for all IAA related matters The address ⁽¹⁾ provided will be where IAA test materials will be delivered and picked up from after testing is completed.
A VALID E-MAIL ADDRESS IS REQUIRED!

Pearson nor ISBE will update your Profile information for you!





* Name:

REQUIRED - The contact's **FULL NAME** in each of the designated categories. For the ISAT and IAA TEST COORDINATOR, person indicated is the individuals to whom test materials will be delivered.

Title:

* Address:

Street Address
NO Post Office Boxes

* City:

* State:

MUST BE Illinois

REQUIRED - In the ISAT and IAA Test Coordinator blocks, this address should be to where test materials will be delivered and picked up from at the district or Chicago school.

* Zip:

* Email:

REQUIRED!!

* Phone:

All contacts listed in designated categories **MUST PROVIDE A VALID TELEPHONE NUMBER !**

Fax:

All contacts listed in designated categories **MUST PROVIDE A VALID E-MAIL ADDRESS !**

For ISAT and IAA Test Coordinators, this is where shipment confirmation and additional order approvals will be sent.

* - Required



TEST MATERIALS

ISAT & IAA



Reference Guide: Page 9-10

IAA - You will receive one shipment

- District Test Coordinator Packet
- Implementation Manual
- Test Booklets (Grade & Form Specific)

ISAT - You will receive a non-secure and secure shipment

■ Non-Secure

- District Test Coordinator Kit
- School Coordinator Kit
- Chicago School Coordinator Kit
- Test Administration Manuals
- Professional Testing Practices for Educators manuals
- Grade 4-8 Answer Documents and Grade 4-8 LM Answer Documents
- Pre-ID Packet

■ Secure

- Grade 3-8 Test Booklets
- Special Format Tests
- Form LM Test Booklets



Test Material Quantities

- Calculated based on NUMBER OF STUDENTS ENROLLED
- ISAT - 10% Overage
 - Standard Format Tests (Forms 1-6)
 - Form LM
 - Form SF
 - Answer Documents
 - Test Manuals
 - Reader Scripts
- Standard Format Enrollment numbers are reduced by special format orders



ENROLLMENTS

SIS & Assessment Network



Enrollments

Reference Guide: Page 10-14

- ***Home School Districts*** upload/enter their district's 2011- 12 school year **ENROLLMENTS** to the Illinois State Board of Education's Student Information System (SIS).
- The ISBE deadline to upload initial 2011-12 enrollments to SIS was Friday, October 14, 2011. Pearson will utilize this enrollment information from SIS to populate Current (Curr) enrollment fields in Assessment Network.

NOTE: Districts should continue to enroll and exit students in ISBE's Student Information System (SIS) throughout the school year as students enter and leave the district.



Enrollment Tables

IAA Enrollment Table

RCDS Code	School Name	IAA Test Materials - Spring													
		Grade 3		Grade 4		Grade 5		Grade 6		Grade 7		Grade 8		Grade 11	
		Prev	Curr	Prev	Curr	Prev	Curr	Prev	Curr	Prev	Curr	Prev	Curr	Prev	Curr
999999999012039	SAMPLE SCHOOL														
	STUDENT INFORMATION/SIS	0	14	9	20	6	51	0	6	7	9	11	12	17	15

ISAT Enrollment Table

For ISAT Special Format Orders –
Enter NUMBER of STUDENTS

RCDS Code	School Name												
		Grade 3		Grade 4		Grade 5		Grade 6		Grade 7		Grade 8	
		Prev	Curr	Prev	Curr	Prev	Curr	Prev	Curr	Prev	Curr	Prev	Curr
999999999012039	SAMPLE SCHOOL												
	STUDENT INFORMATION/SIS	0	137	144	146	142	152	139	0	135	122	99	101
	BRAILLE – Number of students being assessed	0	0	0	0	0	0	0	0	0	0	0	0
	LARGE-PRINT – Number of students being assessed	0	0	0	0	0	1	0	0	0	0	0	0
	READER SCRIPT – Number of students being assessed INDIVIDUALLY	0	0	0	11	0	0	0	0	0	0	0	0
	READER SCRIPT – Number of students being assessed in a GROUP Setting	0	0	0	13	0	0	0	17	0	0	0	0
	AUDIOCASSETTE – Number of students being assessed	0	0	0	0	0	0	2	0	0	0	0	0
	AUDIO CD-ROM – Number of students being assessed	0	0	0	0	0	1	0	0	3	0	0	0
	FORM LM (LINGUISTICALLY MODIFIED) -- Number of students being assessed	0	0	0	120	0	0	0	0	0	0	0	0
	ESTIMATED NUMBER OF STANDARD -FORMAT (Form 1-6) TEST BOOKLETS		137		2		150		-17		122		101





Calculating ISAT Enrollments

Reference Guide: Page 13

RCDTS Code	School Name	ISAT Test Materials - Spring											
		Enter below the NUMBER OF STUDENTS currently enrolled that require a special format test.											
		Grade 3		Grade 4		Grade 5		Grade 6		Grade 7		Grade 8	
		Prev	Curr	Prev	Curr	Prev	Curr	Prev	Curr	Prev	Curr	Prev	Curr
99999999012039	SAMPLE SCHOOL												
STUDENT INFORMATION/SIS		0	137	144	146	142	152	139	0	135	122	99	101
BRAILLE – Number of students being assessed		0	0	0	0	0	0	0	0	0	0	0	0
LARGE-PRINT – Number of students being assessed		0	0	0	0	0	1	0	0	0	0	0	0
READER SCRIPT – Number of students being assessed INDIVIDUALLY		0	0	0	11	0	0	0	0	0	0	0	0
READER SCRIPT – Number of students being assessed in a GROUP Setting		0	0	0	13	0	0	0	17	0	0	0	0
AUDIOCASSETTE – Number of students being assessed		0	0	0	0	0	0	2	0	0	0	0	0
AUDIO CD-ROM – Number of students being assessed		0	0	0	0	0	1	0	0	3	0	0	0
FORM LM (LINGUISTICALLY MODIFIED) -- Number of students being assessed		0	0	0	120	0	0	0	0	0	0	0	0
ESTIMATED NUMBER OF STANDARD -FORMAT (Form 1-6) TEST BOOKLETS			137		2		150		-17		122		101

Original enrollment upload
Number of students using
reader scripts

Standard Format Tests
you will receive
Assessment Network for ISAT & IAA

Number of students
using Form LM





Calculating ISAT Enrollments

RCDTS Code	School Name	ISAT Test Materials - Spring											
		Enter below the NUMBER OF STUDENTS currently enrolled that require a special format test.											
		Grade 3		Grade 4		Grade 5		Grade 6		Grade 7		Grade 8	
		Prev	Curr	Prev	Curr	Prev	Curr	Prev	Curr	Prev	Curr	Prev	Curr
99999999012039	SAMPLE SCHOOL												
STUDENT INFORMATION/SIS		0	137	144	146	142	152	139	0	135	122	99	101
BRILLE – Number of students being assessed		0	0	0	0	0	0	0	0	0	0	0	0
LARGE-PRINT – Number of students being assessed		0	0	0	0	0	1	0	0	0	0	0	0
READER SCRIPT – Number of students being assessed INDIVIDUALLY		0	0	0	11	0	0	0	0	0	0	0	0
READER SCRIPT – Number of students being assessed in a GROUP Setting		0	0	0	13	0	0	0	17	0	0	0	0
AUDIOCASSETTE – Number of students being assessed		0	0	0	0	0	0	2	0	0	0	0	0
AUDIO CD-ROM – Number of students being assessed		0	0	0	0	0	1	0	0	3	0	0	0
FORM LM (LINGUISTICALLY MODIFIED) -- Number of students being assessed		0	0	0	120	0	0	0	0	0	0	0	0
ESTIMATED NUMBER OF STANDARD -FORMAT (Form 1-6) TEST BOOKLETS			137		2		150		-17		122		101

At **no time** should standard format test booklets be less than zero

When enrollment numbers are updated with the January Pre-ID file, if there are no Pre-ID records, the order for that grade level will be deleted – Pearson will contact you. Additional orders will not be allowed without ISBE approval.





Entering ISAT Enrollments

Reference Guide: Page 11-12

ISAT Test Materials - Spring											
Enter below the NUMBER OF STUDENTS currently enrolled that require a special format test.											
Grade 3		Grade 4		Grade 5		Grade 6		Grade 7		Grade 8	
Prev	Curr	Prev	Curr	Prev	Curr	Prev	Curr	Prev	Curr	Prev	Curr
0	137	144	146	142	152	139	0	135	122	99	101
0	0	0	0	0	0	0	0	0	0	0	0
0	0	0	0	0	1	0	0	0	0	0	0
0	0	0	11	0	0	0	0	0	0	0	0
0	0	0	13	0	0	0	17	0	0	0	0
0	0	0	0	0	0	2	0	0	0	0	0
0	0	0	0	0	1	0	0	3	0	0	0
0	0	0	120	0	0	0	0	0	0	0	0
	137		2		150		-17		122		101

Grade 7
Curr



- From Enrollment Tab, select ISAT Spring 2011 Enrollment from the Test drop-down box and select enrollment link.

- If no special format tests are needed, click the **Complete Enrollment** button

- If special format tests are needed, click the **Edit Enrollment** button





Entering ISAT Enrollments

Reference Guide: Page 11-12

- When ALL special format tests are entered, click on **Complete Enrollment**
- Review the **Additional Information** page carefully – click **Next**
- Review **Profile** page - click Next
- Carefully review the enrollments – click **Confirm Enrollment**

Complete Enrollment

Confirm Enrollment

Enrollment Order Confirmation Successful



Pre-ID

Student Information System



Friday, January 6, 2012

- Is the **FINAL DAY Home School** districts can upload Student ID (pre-ID) information to ISBE's Student Information System, and still receive a Student ID (pre-ID) label for ISAT and have that student populated in the online scoring system for IAA for the spring 2012 test cycle.



Chicago District 299 Schools enter school spring 2011 Student ID (pre-ID) information into the Chicago District's IMPACT system.

The Chicago District Office then provides ISBE with a Student ID (pre-ID) extract at the designated – ISBE mandated – time.



RCDTS Codes within a student's SIS Pre-ID record

Student ID	Student Name	Birth Date	Home RCDTS	Serving RCDTS	Testing RCDTS	A	B	C	D	E	F	G	H	Error Code
123456789	Student Last Name, Sample 1	07/2/1997	123456789123456	123456789123456	123456789123456	04	N	07	03	Y	Y	ISAT	Y	
123456790	Student Last Name, Sample 2	07/3/1993	123456789123456	123456789123456	123456789123456	08	N	07	03	Y	Y	IAA	Y	
123456791	Student Last Name, Sample 3	07/4/1988	123456789123456	123456789123456	123456789123456	12	N	07	03	Y	Y	PSAE	Y	
123456792	Student Last Name, Sample 4	07/5/1992	123456789123456	123456789123456	12345678912012C	08	N	07	03	Y	Y	ISAT	Y	
123456793	Student Last Name, Sample 5	07/6/1996	123456789123456	123456789123456	123456789123456	04	N	07	03	Y	Y	ISAT	Y	
123456794	Student Last Name, Sample 6	07/7/1994	123456789123456	123456789123456	123456789123456	06	N	07	03	Y	Y	ISAT	Y	

- **HOME School**
 - Essential for reporting.
- **SERVING School**
- **TESTING School**
 - Essential for test material distribution.

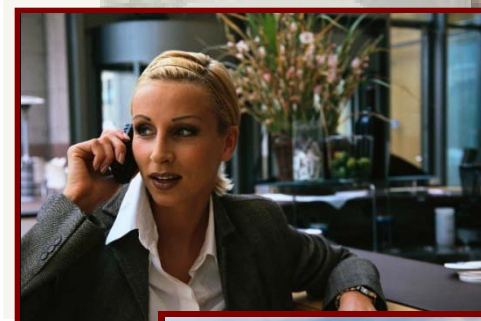




Communication is KEY



It is up to a student's Home School district who determine who will receive test materials for a student via entry in ISBE's Student Information System.

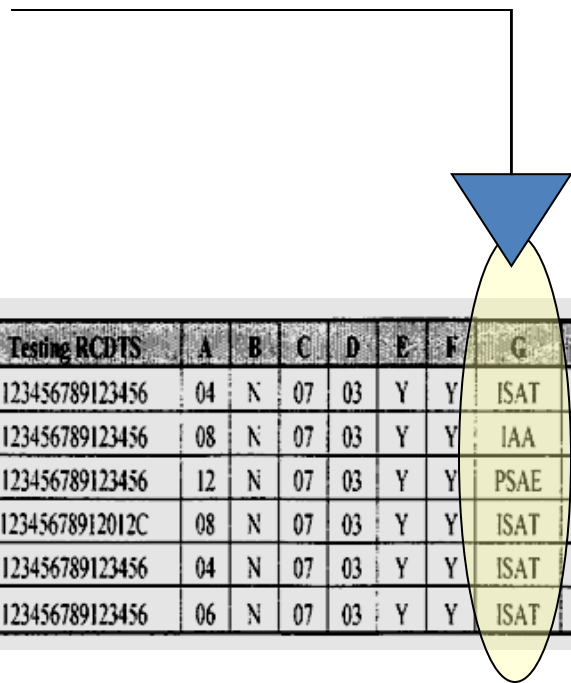


It is the Home & Testing District test coordinators' responsibilities to communicate with each other to ensure all students testing are included in the pre-id file and receive the materials they need.





TEST TAKEN



Student ID	Student Name	Birth Date	Home RCDTS	Serving RCDTS	Testing RCDTS	A	B	C	D	E	F	G	H	Error Code
123456789	Student Last Name, Sample 1	07/2/1997	123456789123456	123456789123456	123456789123456	04	N	07	03	Y	Y	ISAT	Y	
123456790	Student Last Name, Sample 2	07/3/1993	123456789123456	123456789123456	123456789123456	08	N	07	03	Y	Y	IAA	Y	
123456791	Student Last Name, Sample 3	07/4/1988	123456789123456	123456789123456	123456789123456	12	N	07	03	Y	Y	PSAE	Y	
123456792	Student Last Name, Sample 4	07/5/1992	123456789123456	123456789123456	12345678912012C	08	N	07	03	Y	Y	ISAT	Y	
123456793	Student Last Name, Sample 5	07/6/1996	123456789123456	123456789123456	123456789123456	04	N	07	03	Y	Y	ISAT	Y	
123456794	Student Last Name, Sample 6	07/7/1994	123456789123456	123456789123456	123456789123456	06	N	07	03	Y	Y	ISAT	Y	

Make Sure Test to Be Taken is Accurate Prior to January 6, 2012





ADDITIONAL TEST MATERIAL

Orders & Approvals



PEARSON



Important Information

about placing additional test material orders:

Reference Guide: Page 15-16

Additional Order Window opens February 6, 2012

* Need By Date: / / (MM/DD/YYYY)

* Delivery Method:

* Shipment Reason: Other:

Special Instructions:

Ship To:

* Address Line 1

Address Line 2

* City





Important Information

about placing additional test material orders:

- **PEARSON'S ADDITIONAL TEST MATERIAL ORDER SYSTEM IS FOR PLACING SMALL ADDITIONAL TEST MATERIAL ORDERS.**
- **MUST BE entered into Pearson's Assessment Network system. Additional order requests via e-mail, fax, or telephone, will NOT be accepted.**
- **Placed at least 72 hours prior to when the test material will be used. Additional test material orders will be shipped UPS Ground to the same address and the same person as the initial test material order. Editing of shipping address and educational entity contact is not allowed!**
- **ISAT & IAA requests to expedite processing and or shipping of additional test materials orders will not be granted without the expressed approval of ISBE.**
- **ALL additional test material orders will be subject to review and approval by ISBE.**
- **Please try to place just ONE additional order.**



PACKAGING, DISTRIBUTION, RECEIPT & PICK-UP

ISAT & IAA



Reference Guide: Page 18-19

- ✓ *Signature* **Required**
- ✓ Check packing list carefully
- ✓ Check Assessment Network History Tracking

Choose whether you want to see Orders from Pearson or Shipments to Pearson.

Order History and Tracking

View By: Orders from Pearson Shipments to Pearson

Approve										Orders 1 - 10 of 10	
<input type="checkbox"/>	Edit?	Delete?	Order	Sales Order Number	Code	Customer	Status	Submission Date	Approval Date	Delivery Date	Confirmation
			Test Materials (1036128)	2171128/1	000000000010000	SAMPLE DISTRICT	Delivered			01/31/2011	
			Test Materials (1036136)	2170525/1	000000000010000	SAMPLE DISTRICT	Delivered			01/31/2011	
			Test Materials (1036129)	2171128/2	000000000011079	SAMPLE MIDDLE SCHOOL A	Delivered			01/31/2011	
			Test Materials (1036152)	2170525/2	000000000011079	SAMPLE MIDDLE SCHOOL A	Delivered			01/31/2011	

Test Materials or Additional Order will display depending on the test material order.

- Test Materials are initial test material shipments.
- Additional Order is those materials ordered on or after February 6, 2012.

Test Materials and Additional Order are hyperlinks. To view details of the shipment, click on the hyperlink





Order Details	
View Ballot Detail	
Submission Date:	01/28/2011
Customer:	SAMPLE DISTRICT
User:	SYSTEM
Status:	Delivered

Shipping Details	
Ship To:	999999999010000
	SAMPLE DISTRICT
	ILLINOIS STATE BOARD OF EDUCAT
	100 NORTH FIRST STREET
	SPRINGFIELD, IL 62777-0001
	DENNIS OOEDSCOPE
Phone:	(217) 7824823
Fax:	(217) 7826097

Shipment #1 Shipped: 01/28/2011			
Estimated Arrival: 01/31/2011		View Packing List	
Shipment not yet confirmed View Confirmation			
Box	Status	Delivery Date	Tracking Number
1	Delivered	01/31/2011	FedEx - 620242583261821
2	Delivered	01/31/2011	FedEx - 620242583261832
3	Delivered	01/31/2011	FedEx - 620242583261845

Material Selection		
Item	Description	Quantity
IL00005076	TB, GRD 3, READ/MATH, ISAT 2011, PK 5	5
IL00003480	ISAT RULER, GRD 3, 25 EACH	25
IL00005082	TB, GRD 6, READ/MATH, ISAT 2011, PK 5	5
IL00005080	TB, GRD 5, READ/MATH, ISAT 2011, PK 5	5
IL00005078	TB, GRD 4, READ/MATH/SCI, ISAT 2011, PK 5	5
IL00003483	ISAT RULER, GRD 4-8, 25 EACH	25
IL00005086	TB, GRD 8, READ/MATH, ISAT 2011, PK 5	5
IL00005084	TB, GRD 7, READ/MATH/SCI, ISAT 2011, PK 5	5
IL00004842	MATH REFERENCE KIT, GR 7-8, PK 25	25





Contact Information

Reference Guide: Page 5

The Assessment Network for ISAT & IAA can be accessed at:

www.pearsonaccess.com/il

Pearson 1-888-705-9413

ISAT@support.pearson.com

IAA_pearson@support.pearson.com

Illinois State Board of Education

Student Assessment Division 1-866-317-6034

Student Information System HELP Desk 217-558-3600