


Peer Evaluation, Mentoring, Professional Development



Bensenville School District 2
Bensenville, Illinois

RTTT3 Webinar, May 2013

AGENDA

- 1. Background...Bensenville School District 2**
- 2. RTT3 Focus and Alignment**
 - RT3-1 Peer Evaluation System**
 - RT3-2 Induction and Mentoring**
 - IA10 Professional Development Plan**
- 3. Demonstration Classrooms** 

Demonstration Classrooms



RT3-1

The district must establish a formal **peer evaluation system** that is used for a significant portion of summative evaluations and can be used as part of evaluations during teacher remediation; peer evaluators must have positive performance evaluations.

RT3-2

The district must establish a one year **induction and mentoring program** for beginning principals and a two-year program for beginning teachers.

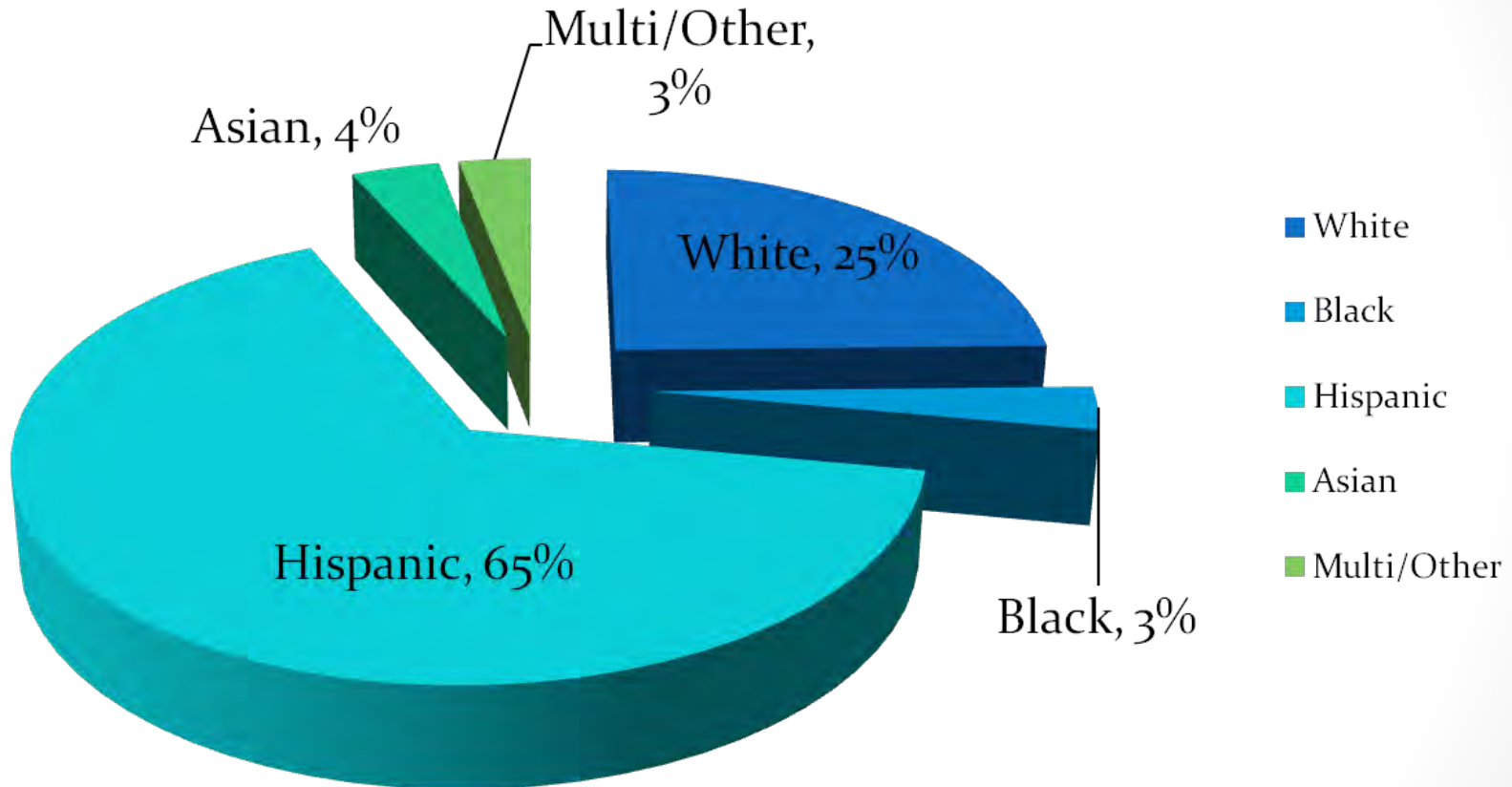
IA10

The district regularly reallocates resources to support school, staff, and instructional improvement and provides sufficient flexibility in the use of time and re-allocates **professional development** resources necessary for RTT3 implementation.

Bensenville Elementary District 2

Who are we?

Demographic Information

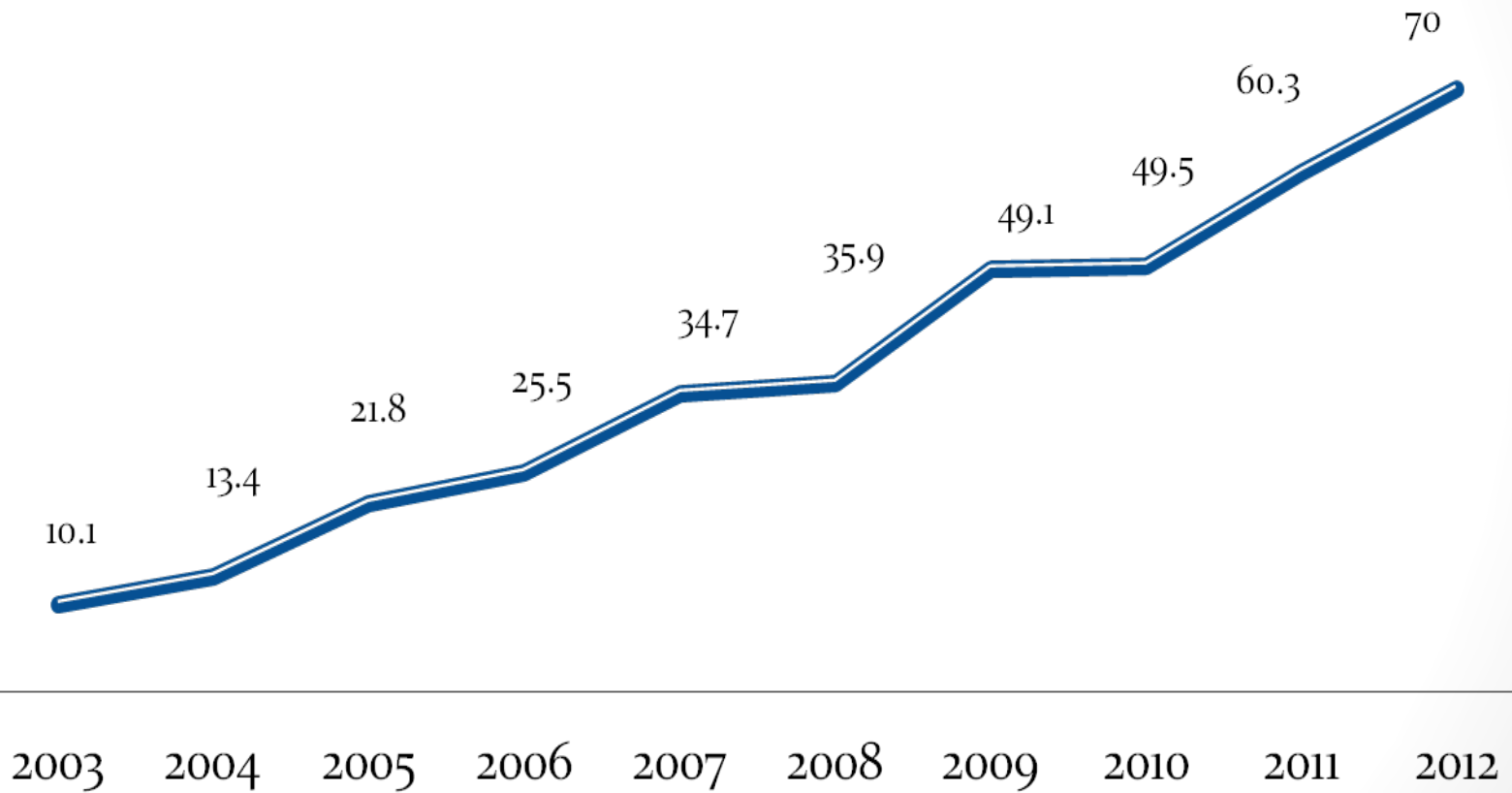


EC Though 8th Grade
2,157 Students, 40% ELL
60% Free/Reduced Lunch

National Blue Ribbon Award-2011

Urgency for Change

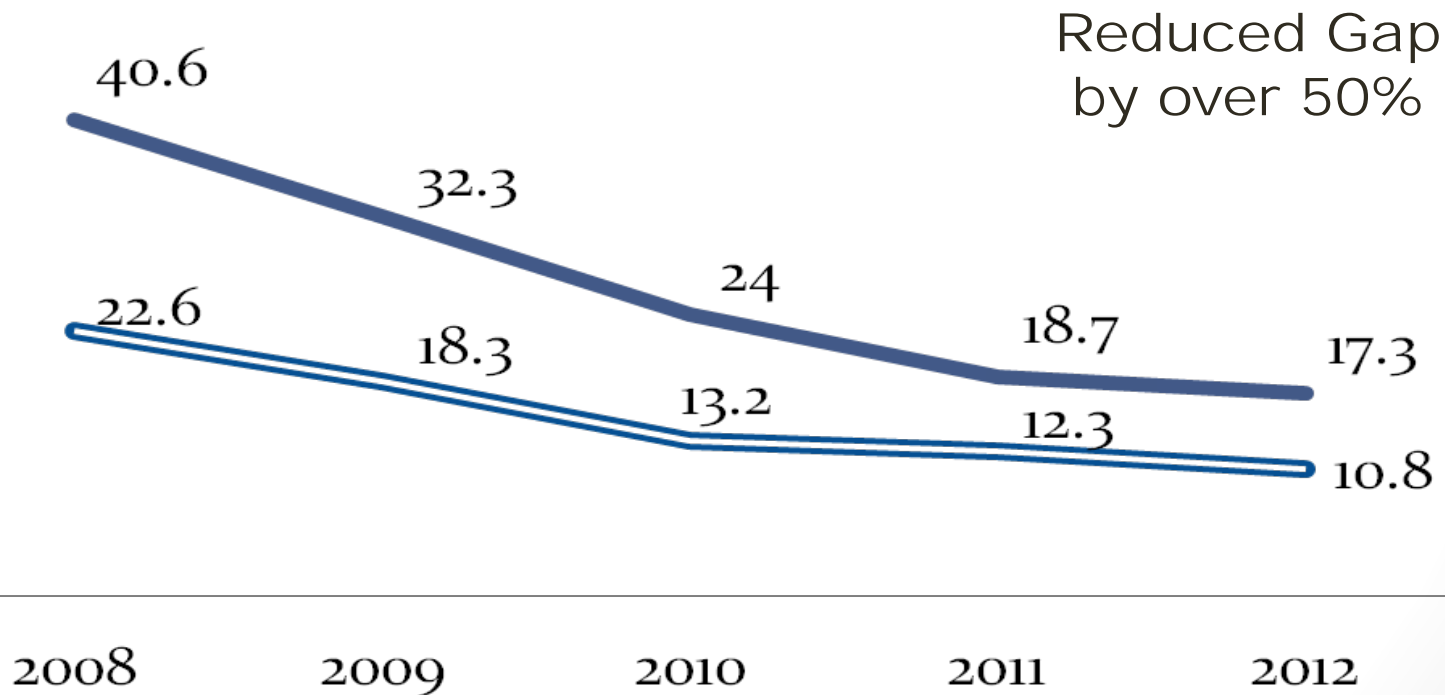
— Free/Reduced Lunch %



Closing the Achievement Gap

Gap in Reading ISAT M/E%

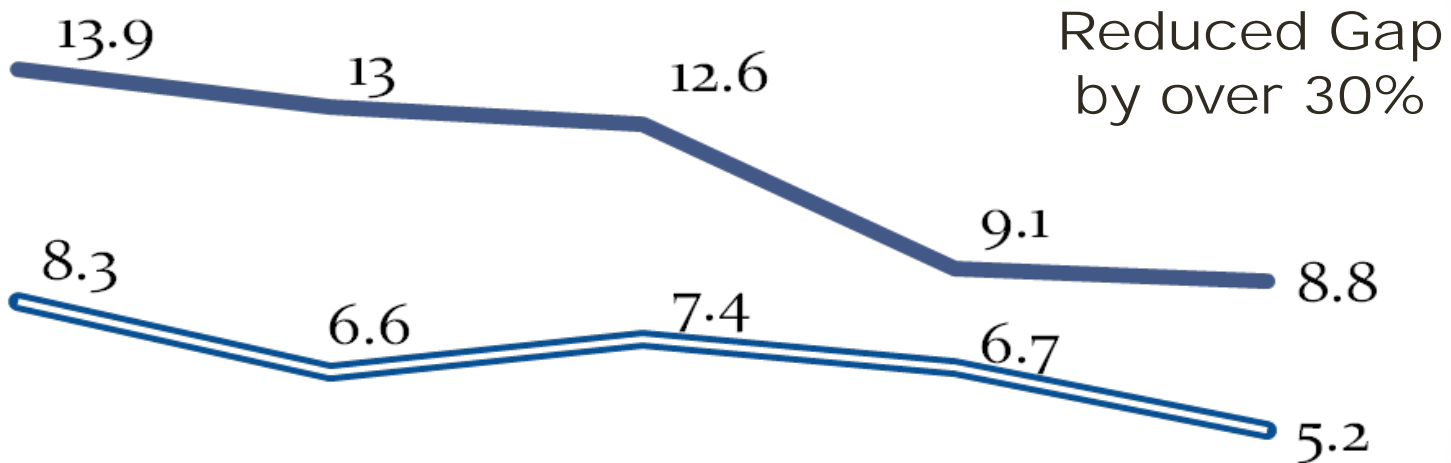
— Hispanic/White — LEP/White



Closing the Achievement Gap

Gap in Math ISAT M/E%

Hispanic/White LEP/White



2008

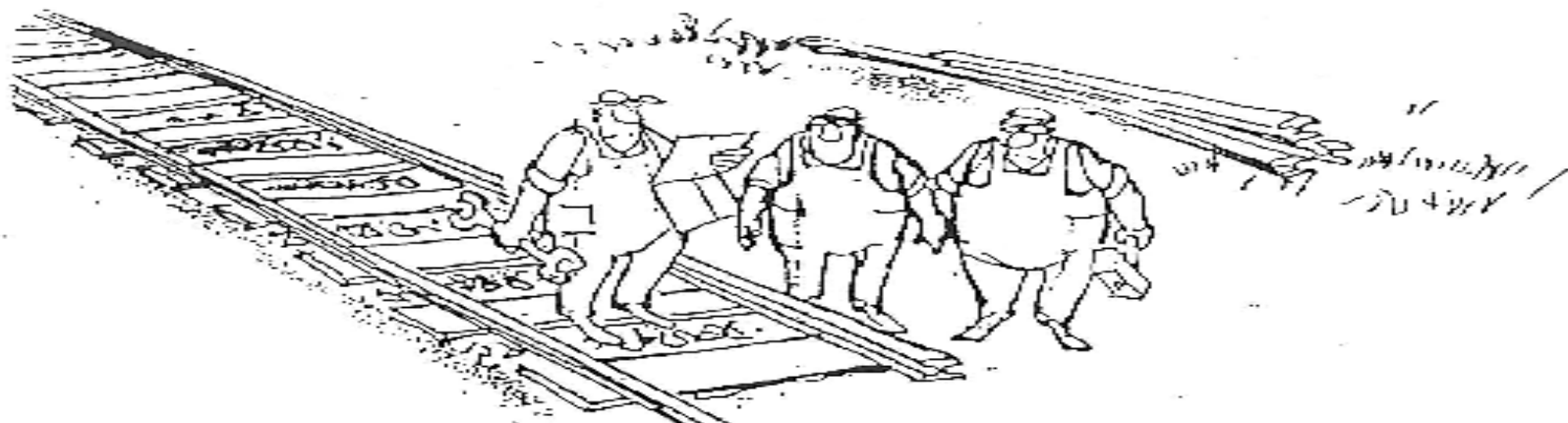
2009

2010

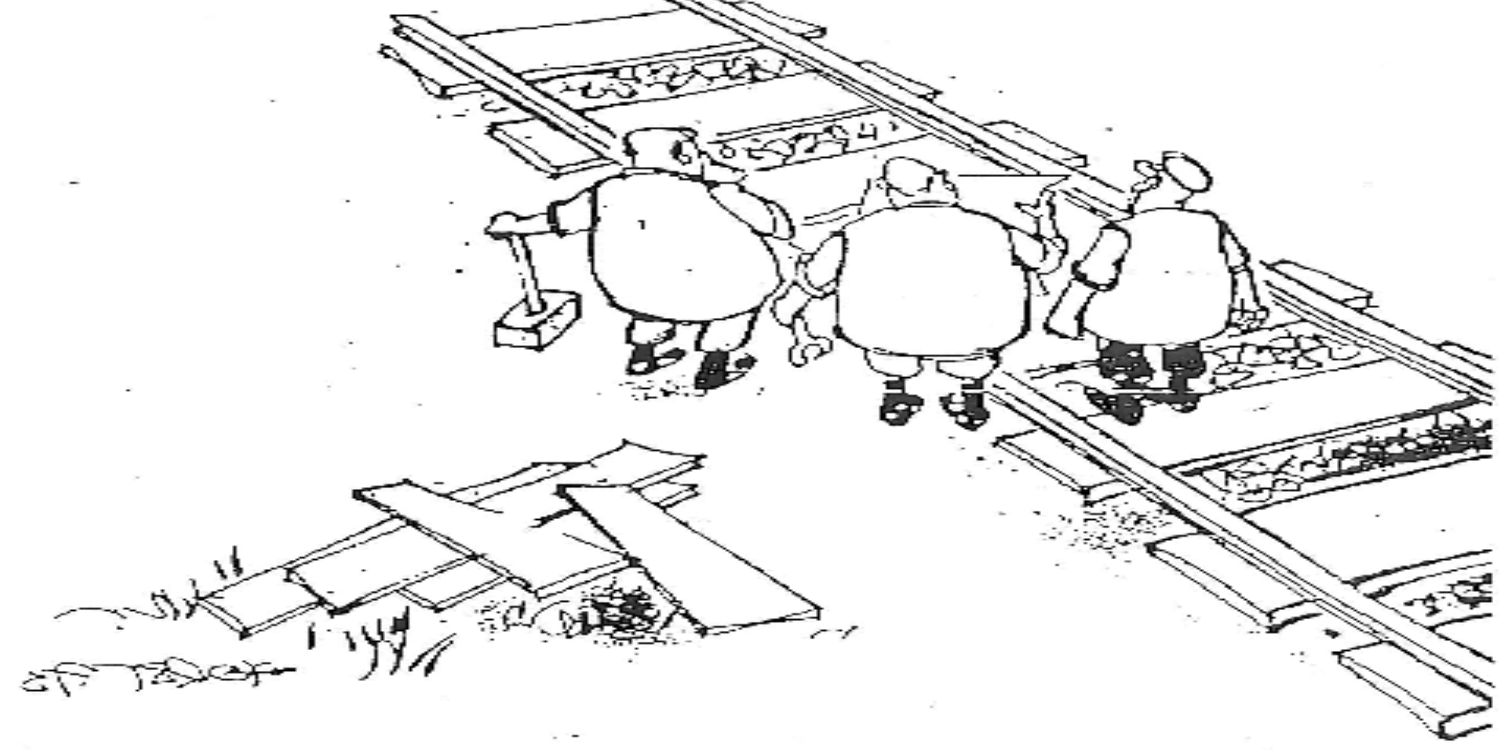
2011

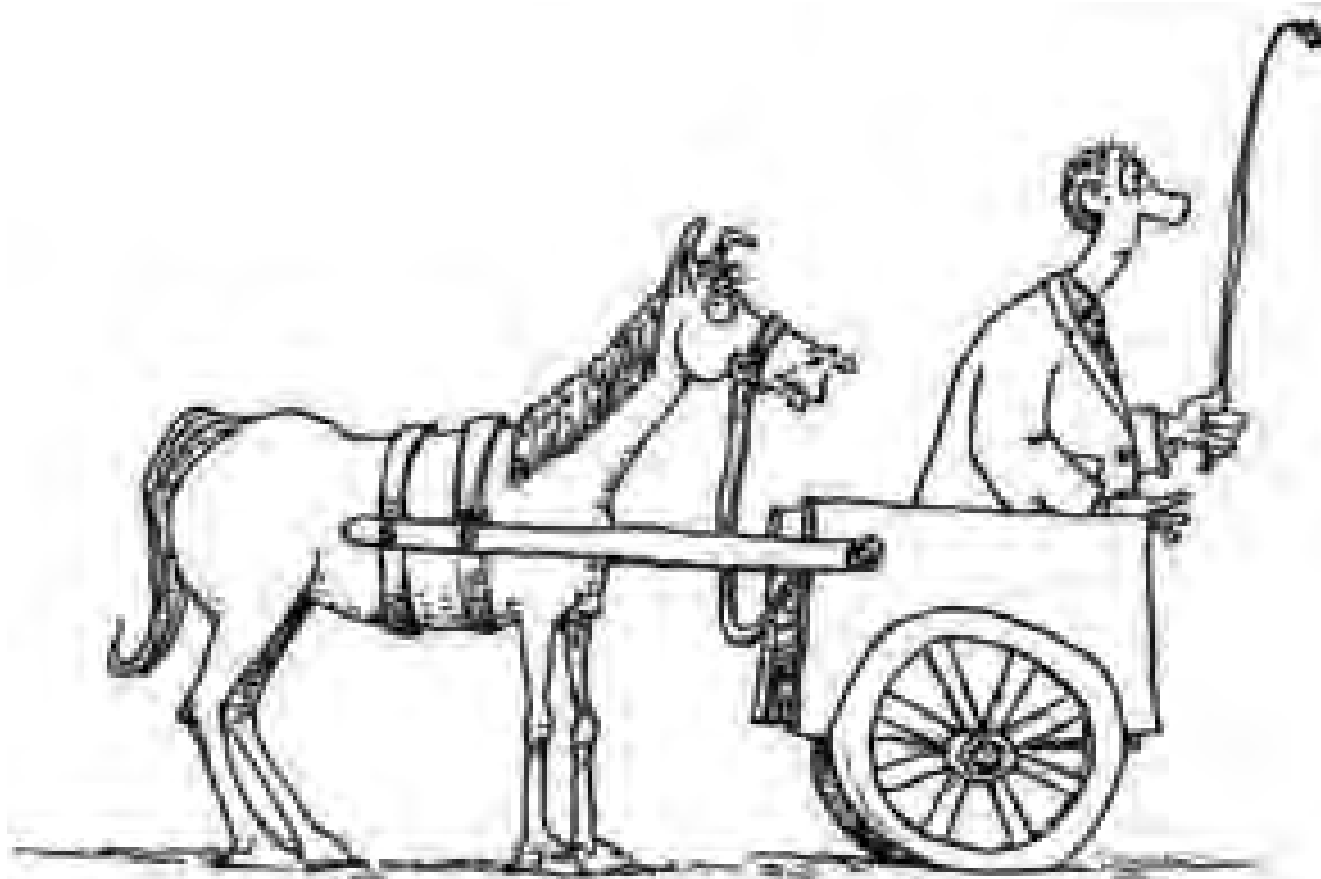
2012





Student Achievement





Standards for Professional Learning.

Learning Forward, 2011.....**PERA**, Subpart B:
Performance Evaluation Plans: Teachers, Section
50.100, c3,d

Demonstration Classrooms

Building capacity from the inside out...

Outside-In Professional Learning

- Outside Consultants
- Top Down Planning
- System Centered
- Passive Participation
- Knowledge Consumption
- Individual Implementation, Isolation
- Authoritarian Communication
- Episodic

Inside-Out Professional Learning

- Inside Professionals
- Collegial Involvement
- Student Centered
- Active Participation
- Knowledge Construction
- Collaborative Implementation, Mentorship
- Networked Communication
- Sustained



Planning



Orientation Meeting



Classroom Observation



Debriefing Meeting



Application & Follow-up



ELA-CCSS: Six Shifts



1. More Informational Text



2. Building Knowledge in the Disciplines



3. Staircase of Complexity



4. Text Dependent Questions



5. Writing from Sources



6. Academic Vocabulary







NATALIE WENDLING

7TH GRADE TEACHER



Life
is
going
to
be
great



tree

WHAT ARE YOU
THINKING?

