

ILLINOIS PUBLIC SCHOOL ENROLLMENT PROJECTIONS: 2004-05---2012-13

ILLINOIS STATE BOARD OF EDUCATION
DATA ANALYSIS AND PROGRESS REPORTING

February 2004

Jesse H. Ruiz
Chairman

Dr. Randy J. Dunn
State Superintendent of Education (Interim)

FOREWORD

This study presents public school enrollment projections through the school year 2012-2013. The primary purpose of this study is to facilitate statewide planning for school finance, facilities, and educational personnel. While the primary focus is statewide, the information should also prove valuable to individual school districts for comparative purposes. Data on enrollment projections by grade, county, and race/ethnicity are included.

This study was conducted by Dr. Shuwan Chiu, Principal Performance Consultant, Division of Data Analysis and Progress Reporting, Illinois State Board of Education, 217/782-3950.

INTRODUCTION

The sources of information used in this report were provided by the Illinois Department of Public Health's Center for Health Statistics and the Illinois State Board of Education's Public District/School Fall Enrollment and Housing Report data. The specific data used for actual and projected analysis in preparing this report are: the number of live births, the number of females by selected age ranges, and the number of students by grade.

FINDINGS

Illinois public elementary (K-8) school enrollment peaked in 1970-71 (1,684,132) while Illinois public secondary (9-12) school enrollment peaked in 1976-77. A decline in public elementary and secondary school enrollment continued through 1986-87 and 1990-91, respectively. However, since 1990-91, elementary and secondary enrollments, except for a slight decrease in secondary enrollment in 1997-98 and 1998-99, have begun to increase and the elementary enrollment has reached the peak of a trend in 2002-03.

Elementary enrollment reached the bottom of a trend in 1986-87 and has since increased 16.6% when compared with 2002-03. Secondary enrollment reached the bottom of a trend in 1990-91 and has since increased 18.1% when compared with 2003-04. Total public school enrollment began to increase in 1990-91 and is projected to continue increasing through the year 2007-08 to reach the peak.

The percent of white non-Hispanic students has declined since 1992-93 and is projected to continue to decline through the year 2012-13. The percent of black non-Hispanic students has, and is projected to continue to have, slight decreases, but will remain relatively stable through the year 2012-13. The percent of Hispanic students has increased since 1994-95 and is projected to continue to increase through the year 2012-13.

This report is prepared to assist those who are involved in facilitating statewide planning for school finances, facilities, and educational personnel. While the report is primarily for statewide analyses, personnel at the county and district level can use this report for comparative purposes.

Illinois public school enrollment reached a peak in 1971-72 (2,373,659), but began to decline in each successive year, reaching a low in 1989-90 with a decline of over 615,000 students. The following information and data in Chart 1 illustrates specific aspects of the decline.

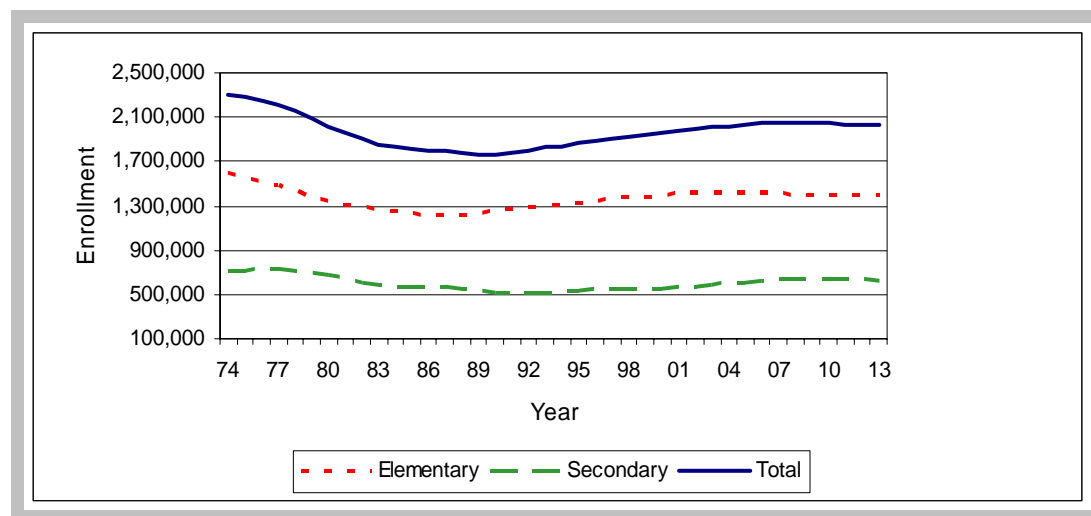
- Total enrollment declined each year thereafter, reaching a low of 1.76 million students in the 1989-90 school year.
- Elementary public school (K-8) enrollment declined each year thereafter, reaching an enrollment low of just over 1.22 million students during the 1986-87 school year. After academic year 1986-87, the elementary enrollment continued to grow and reached a peak in 2002-03.
- Secondary public school (9-12) enrollment peaked at just over 727,000 students in 1976-77. Secondary school enrollment declined each year thereafter, reaching a low of just over 506,000 students in the 1990-91 school year.

Enrollment Projections

Illinois public total enrollment (K-12) is projected to increase through school year 2007-08. Illinois public school elementary (K-8) enrollment is projected to decrease each school year after 2002-03. Illinois public school secondary (9-12) enrollment is projected to increase each school year through 2008-09, reaching approximately 648,000 students. These data are presented in Chart 1 and Table 1.

Chart 1

Elementary, Secondary, and Total Enrollment and Projected Enrollment



Enrollment Projections by Grade

The actual enrollment by grade for the school years 1999-00 through 2003-04, and the projected enrollment by grade through the school year 2012-13, are presented in Table 2.

For the fall of 1999 through the fall of 2003, the percent of students in the public school system who advanced a grade was determined by comparing the number of students in a given grade in a given year, to the number of students one grade lower in the prior year. For example, in the fall of 2002, the seventh grade enrollment was 160,819 but in the fall of 2001, the sixth grade enrollment was 163,524 students; therefore, $160,819 \div 163,524 \times 100$ equals 98.35% as the percent of students in the public school system who advanced one grade. Any increase over 100% means an increase in enrollment for that grade when compared to the prior year enrollment for the next lowest grade.

For the fall of 2004 through the fall of 2012, the first grade enrollment projections are based upon the number of births six to ten years earlier; all other elementary grade enrollment projections are determined by the following method: to project the number of students by grade in the public school system for the fall of 2003 through the fall of 2011, the average rate of students (by grade) for the prior four years was multiplied times the enrollment for the next lowest grade of the prior year. For example, to project the number of eighth graders for the fall of 2004, add the rate for each of the prior four years, divide by four, and take that rate times the number of seventh-graders for the fall of 2003. Therefore $100.28\% (\text{fall of 2000}) + 99.75\% (\text{fall of 2001}) + 98.95\% (\text{fall of 2002}) + 99.42\% (\text{fall of 2003}) = 398.40\%$ divided by 4 = 99.60%. The seventh-grade enrollment for the fall of 2003 was $162,822 \times 99.60\% = 162,170$ students projected for eighth-grade for the fall of 2004.

As for the projection for the secondary enrollment (grade 9-12), to project the number of students by grade in the public school system for the fall of 2004 through the fall of 2011, the moving average on

the retaining rate cannot reflect the rapid rise of the secondary enrollment. Therefore, the moving average rate on the retaining growth is applied. For year 2004-05 through year 2007-08, the average of the growth rate of students (by grade) for the prior four years was added to the prior year retaining rate and then multiplied the enrollment for the next lowest grade of the prior year. After 2007-08, the same method to project the elementary enrollment is applied to project the secondary enrollment.

Enrollment Projections by County

Enrollment projections, as a percentage change by county, are presented in Table 3. The projections are for school years 2007-08 and 2012-13 when compared to the 2003-04 school year.

For the 2007-08 school year, enrollment increases will range from 0.12% for Sangamon County to 43.55% for Kendall County when compared to 2003-04. For the 2012-13 school year, enrollment increases will range from 0.19% for Sangamon County to 126.88% for Kendall County when compared to 2003-04.

Percentage of Enrollment Projections by Race/Ethnicity

Percentages of white and black students continue decreasing while percentages of Asian and Hispanic students continue increasing (see Table 4).

Table 1
Illinois Public School Enrollment and Projections with Change from Peak Year

School Year	Total Elementary (K-8)			Total Secondary (9-12)			Total Enrollment (K-12)		
	Enrollment	Change from 1972-73 Number % Change		Enrollment	Change from 1976-77 Number % Change		Enrollment	Change from 1972-73 Number % Change	
1973-74	1,600,206			709,560			2,309,766		
1974-75	1,559,063	-41,143	-2.6%	718,423			2,277,486	-32,280	-1.4%
1975-76	1,524,831	-75,375	-4.7%	726,138			2,250,969	-58,797	-2.5%
1976-77	1,491,053	-109,153	-6.8%	* 727,055			2,218,108	-91,658	-4.0%
1977-78	1,444,061	-156,145	-9.8%	715,903	-11,152	-1.5%	2,159,964	-149,802	-6.5%
1978-79	1,387,315	-212,891	-13.3%	699,259	-27,796	-3.8%	2,086,574	-223,192	-9.7%
1979-80	1,346,061	-254,145	-15.9%	670,605	-56,450	-7.8%	2,016,666	-293,100	-12.7%
1980-81	1,313,904	-286,302	-17.9%	643,082	-83,973	-11.5%	1,956,986	-352,780	-15.3%
1981-82	1,283,302	-316,904	-19.8%	613,188	-113,867	-15.7%	1,896,490	-413,276	-17.9%
1982-83	1,265,482	-334,724	-20.9%	587,252	-139,803	-19.2%	1,852,734	-457,032	-19.8%
1983-84	1,248,684	-351,522	-22.0%	576,048	-151,007	-20.8%	1,824,732	-485,034	-21.0%
1984-85	1,232,104	-368,102	-23.0%	573,370	-153,685	-21.1%	1,805,474	-504,292	-21.8%
1985-86	1,223,807	-376,399	-23.5%	572,722	-154,333	-21.2%	1,796,529	-513,237	-22.2%
1986-87 **	1,222,495	-377,711	-23.6%	568,211	-158,844	-21.8%	1,790,706	-519,060	-22.5%
1987-88	1,224,334	-375,872	-23.5%	553,347	-173,708	-23.9%	1,777,681	-532,085	-23.0%
1988-89	1,229,618	-370,588	-23.2%	529,688	-197,367	-27.1%	1,759,306	-550,460	-23.8%
1989-90	1,246,955	-461,637	-28.8%	511,652	-215,403	-29.6%	** 1,758,607	-551,159	-23.9%
1990-91	1,270,383	-329,823	-20.6%	** 506,941	-220,114	-30.3%	1,777,324	-532,442	-23.1%
1991-92	1,286,620	-313,586	-19.6%	514,546	-212,509	-29.2%	1,801,166	-508,600	-22.0%
1992-93	1,301,016	-299,190	-18.7%	522,592	-204,463	-28.1%	1,823,608	-486,158	-21.0%
1993-94	1,310,817	-289,389	-18.1%	529,814	-197,241	-27.1%	1,840,631	-469,135	-20.3%
1994-95	1,319,985	-280,221	-17.5%	541,253	-185,802	-25.6%	1,861,238	-448,528	-19.4%
1995-96	1,338,890	-261,316	-16.3%	547,193	-179,862	-24.7%	1,886,083	-423,683	-18.3%
1996-97	1,358,721	-241,485	-15.1%	551,786	-175,269	-24.1%	1,910,507	-399,259	-17.3%
1997-98	1,376,466	-223,740	-14.0%	549,936	-177,119	-24.4%	1,926,402	-383,364	-16.6%
1998-99	1,389,319	-210,887	-13.2%	546,200	-180,855	-24.9%	1,935,519	-374,247	-16.2%
1999-00	1,400,806	-199,400	-12.5%	552,571	-174,484	-24.0%	1,953,377	-356,389	-15.4%
2000-01	1,410,133	-190,073	-11.9%	562,723	-164,332	-22.6%	1,972,856	-336,910	-14.6%
2001-02	1,423,239	-176,967	-11.1%	575,245	-151,810	-20.9%	1,998,484	-311,282	-13.5%
2002-03 *	1,424,896	-175,310	-11.0%	586,181	-140,874	-19.4%	2,011,077	-298,689	-12.9%
2003-04	1,422,410	-177,796	-11.1%	598,545	-128,510	-17.7%	2,020,955	-256,531	-11.3%
PROJECTIONS-----PROJECTIONS-----PROJECTIONS									
2004-05	1,419,158	-181,048	-11.3%	613,919	-56,686	-8.5%	2,033,077	-244,409	-10.7%
2005-06	1,412,177	-188,029	-11.8%	630,787	-39,818	-5.9%	2,042,964	-234,522	-10.3%
2006-07	1,410,955	-189,251	-11.8%	642,270	-28,335	-4.2%	2,053,225	-224,261	-9.8%
2007-08	1,407,976	-192,230	-12.0%	647,235	-23,370	-3.5%	2,055,211	-222,275	-9.8%
2008-09	1,397,126	-203,080	-12.7%	648,555	-22,050	-3.3%	2,045,681	-231,805	-10.2%
2009-10	1,395,625	-204,581	-12.8%	645,481	-25,124	-3.7%	2,041,106	-236,380	-10.4%
2010-11	1,398,531	-201,675	-12.6%	639,547	-31,058	-4.6%	2,038,078	-239,408	-10.5%
2011-12	1,402,061	-198,145	-12.4%	634,230	-36,375	-5.4%	2,036,291	-241,195	-10.6%
2012-13	1,404,225	-195,981	-12.2%	628,226	-42,379	-6.3%	2,032,451	-245,035	-10.8%

NOTE: * Indicates the peak of a trend
 ** Indicates the bottom of a trend

Table 2
Actual and Projected Enrollment by Grade

GRADE	1999-00*	2000-01		2001-02		2002-03		2003-04		2004-05		2005-06		2006-07
KIND	149,840	147,619		148,348		148,274		146,804		148,060		147,799		150,152
1ST	162,322	161,147	107.55%	159,552	108.08%	155,530	104.84%	154,728	104.35%	155,678	106.04%	155,590	105.09%	157,972
2ND	158,998	159,857	98.48%	159,604	99.04%	157,136	98.49%	154,181	99.13%	152,849	98.79%	153,906	98.86%	153,748
3RD	164,981	161,528	101.59%	162,836	101.86%	164,413	103.01%	161,414	102.72%	157,723	102.30%	156,631	102.47%	157,949
4TH	158,444	160,493	97.28%	159,037	98.46%	157,569	96.77%	160,274	97.48%	157,373	97.50%	153,860	97.55%	152,439
5TH	155,166	160,536	101.32%	161,167	100.42%	159,490	100.28%	158,413	100.54%	161,300	100.64%	158,113	100.47%	154,603
6TH	153,679	158,543	102.18%	163,524	101.86%	165,460	102.66%	163,885	102.76%	162,158	102.36%	165,189	102.41%	162,143
7TH	148,317	151,682	98.70%	157,866	99.57%	160,819	98.35%	162,822	98.41%	161,847	98.76%	160,164	98.77%	162,826
8TH	149,059	148,728	100.28%	151,305	99.75%	156,205	98.95%	159,889	99.42%	162,170	99.60%	160,925	99.43%	159,123
TOTAL	1,400,806	1,410,133	100.67%	1,423,239	100.93%	1,424,896	100.12%	1,422,410	99.83%	1,419,158	99.77%	1,412,177	99.51%	1,410,955
9TH	164,075	164,642	110.45%	164,941	110.90%	168,635	111.45%	173,795	111.26%	178,216	111.46%	180,986	111.60%	179,657
10TH	144,774	149,618	91.19%	149,945	91.07%	151,070	91.59%	155,189	92.03%	160,302	92.24%	164,897	92.53%	167,884
11TH	125,766	131,757	91.01%	136,914	91.51%	137,631	91.79%	138,637	91.77%	142,712	91.96%	147,595	92.07%	151,944
12TH	117,956	116,706	92.80%	123,445	93.69%	128,845	94.11%	130,924	95.13%	132,689	95.71%	137,309	96.21%	142,785
TOTAL	552,571	562,723	101.84%	575,245	102.23%	586,181	101.90%	598,545	102.11%	613,919	102.57%	630,787	102.75%	642,270
TOTAL	1,953,377	1,972,856	101.00%	1,998,484	101.30%	2,011,077	100.63%	2,020,955	100.49%	2,033,077	100.60%	2,042,964	100.49%	2,053,225

* Starting with the 1999-00 school year, the following student categories were not used: Elementary and Secondary Special Education and Ungraded.

**Projection areas are bold.

(table continues)

Table 2 (continued)

GRADE	2006-07	2007-08		2008-09		2009-10		2010-11		2011-12		2012-13	
KIND		149,371		146,558		148,326		149,665		149,787		149,987	
1ST	106.88%	157,198	104.69%	154,214	103.24%	156,086	106.50%	157,489	106.18%	157,621	105.32%	157,830	105.37%
2ND	98.82%	156,233	98.90%	155,376	98.84%	152,447	98.85%	154,295	98.85%	155,696	98.86%	155,812	98.85%
3RD	102.63%	157,638	102.53%	160,111	102.48%	159,304	102.53%	156,322	102.54%	158,184	102.52%	159,617	102.52%
4TH	97.32%	153,942	97.46%	153,632	97.46%	156,027	97.45%	155,200	97.42%	152,334	97.45%	154,142	97.44%
5TH	100.48%	153,250	100.53%	154,760	100.53%	154,406	100.50%	156,827	100.51%	156,007	100.52%	153,122	100.52%
6TH	102.55%	158,499	102.52%	157,022	102.46%	158,606	102.49%	158,272	102.50%	160,736	102.49%	159,885	102.49%
7TH	98.57%	159,914	98.63%	156,407	98.68%	154,920	98.66%	156,440	98.63%	156,136	98.65%	158,577	98.66%
8TH	99.35%	161,931	99.45%	159,046	99.46%	155,503	99.42%	154,021	99.42%	155,560	99.44%	155,253	99.43%
TOTAL	99.42%	1,407,976	99.79%	1,397,126	99.23%	1,395,625	99.89%	1,398,531	100.21%	1,402,061	100.25%	1,404,225	100.15%
9TH	111.64%	177,796	111.73%	180,731	111.61%	177,570	111.65%	173,632	111.66%	171,984	111.66%	173,674	111.64%
10TH	92.76%	166,981	92.94%	164,669	92.62%	167,560	92.71%	164,711	92.76%	161,058	92.76%	159,449	92.71%
11TH	92.14%	154,853	92.24%	153,796	92.10%	151,726	92.14%	154,418	92.16%	151,797	92.16%	148,399	92.14%
12TH	96.74%	147,605	97.14%	149,359	96.45%	148,625	96.64%	146,786	96.74%	149,391	96.74%	146,704	96.64%
TOTAL	101.82%	647,235	100.77%	648,555	100.20%	645,481	99.53%	639,547	99.08%	634,230	99.17%	628,226	99.05%
TOTAL	100.50%	2,055,211	100.10%	2,045,681	99.54%	2,041,106	99.78%	2,038,078	99.85%	2,036,291	99.91%	2,032,451	99.81%

****Projection areas are bold.**

Table 3
Enrollment Projections by County from 2007-08 to 2012-13

COUNTY	PROJECTED ENROLLMENT FOR 2007-08	PERCENT CHANGE OVER 2003-04	PROJECTED ENROLLMENT FOR 2012-13	PERCENT CHANGE OVER 2003-04
Adam	9,146	-2.99%	8,828	-6.36%
Alexander	1,090	-18.07%	845	-36.49%
Bond	2,271	-0.84%	2,247	-1.72%
Boone	10,348	17.38%	12,655	43.52%
Brown	605	-13.04%	508	-27.54%
Bureau	5,218	-5.41%	4,875	-11.46%
Calhoun	658	-1.45%	643	-4.97%
Carroll	2,596	-7.44%	2,371	-14.59%
Cass	2,114	0.15%	2,120	0.99%
Champaign	23,039	0.25%	23,170	1.26%
Christian	5,924	9.18%	6,676	25.95%
Clark	2,798	-5.34%	2,607	-11.90%
Clay	2,370	-3.32%	2,288	-5.99%
Clinton	5,170	-1.78%	5,045	-4.57%
Coles	7,208	0.79%	7,307	3.62%
Cook	797,033	0.84%	803,006	1.23%
Crawford	3,082	-5.61%	2,874	-11.31%
Cumberland	1,667	-10.22%	1,456	-21.12%
DeKalb	16,815	5.83%	18,034	13.33%
DeWitt	2,568	-9.99%	2,260	-20.15%
Douglas	2,693	-5.47%	2,547	-7.20%
DuPage	165,128	3.82%	172,789	8.28%
Edgar	2,953	-8.77%	2,630	-19.00%
Edwards	892	-7.68%	803	-17.12%
Effingham	5,794	-4.80%	5,440	-10.69%
Fayette	2,874	-4.79%	2,705	-10.08%
Ford	2,420	-0.03%	2,434	1.85%
Franklin	6,219	-1.16%	6,103	-4.08%
Fulton	5,177	-4.44%	4,899	-9.26%
Gallatin	792	-12.10%	671	-26.29%
Greene	2,146	-6.36%	1,978	-13.34%
Grundy	10,303	13.99%	12,171	35.49%
Hamilton	1,122	-9.77%	980	-22.77%
Hancock	3,035	-12.21%	2,582	-25.59%
Hardin	678	2.66%	700	6.06%
Henderson	1,046	-4.31%	992	-8.20%
Henry	8,495	-4.13%	8,031	-9.97%
Iroquois	4,546	-8.93%	4,026	-19.92%

(table continues)

Table 3 (continued)

COUNTY	PROJECTED ENROLLMENT FOR 2007-08	PERCENT CHANGE OVER 2003-04	PROJECTED ENROLLMENT FOR 2012-13	PERCENT CHANGE OVER 2003-04
Jackson	7,334	-2.50%	7,149	-3.53%
Jasper	1,410	-9.47%	1,237	-21.81%
Jefferson	5,695	-6.83%	5,192	-16.07%
Jersey	2,733	-4.81%	2,555	-12.39%
JoDavie	3,014	-5.53%	2,801	-12.58%
Johnson	1,749	1.24%	1,776	2.93%
Kane	120,393	10.98%	136,567	24.89%
Kankakee	18,196	0.64%	18,313	0.74%
Kendall	20,579	43.55%	32,396	126.88%
Knox	7,441	-3.37%	7,110	-8.45%
Lake	144,137	8.30%	158,948	19.08%
LaSalle	16,545	-0.61%	16,452	-0.87%
Lawrence	2,363	-0.19%	2,348	-1.34%
Lee	4,941	-4.05%	4,703	-8.26%
Livingston	6,394	-7.54%	5,796	-15.84%
Logan	3,458	-4.41%	3,277	-8.59%
Macon	15,778	-6.06%	14,642	-11.89%
Macoupin	8,178	-7.77%	7,369	-17.27%
Madison	41,354	-0.65%	40,961	-1.65%
Marion	7,185	-4.53%	6,791	-9.63%
Marshall	1,340	-8.99%	1,185	-19.67%
Mason	3,170	-3.77%	3,039	-6.47%
Massac	2,520	2.94%	2,612	6.95%
McDonough	3,452	-5.21%	3,230	-10.95%
McHenry	56,414	15.32%	67,410	37.79%
McLean	23,783	2.89%	24,625	6.32%
Menard	2,492	-3.07%	2,406	-5.97%
Mercer	1,402	-7.84%	1,267	-17.05%
Monroe	5,039	7.93%	5,546	19.40%
Montgomery	4,251	-9.21%	3,750	-20.36%
Morgan	5,126	-1.94%	5,025	-2.52%
Moultrie	1,974	1.89%	1,988	1.09%
Ogle	10,105	-0.87%	10,001	-2.07%
Peoria	28,903	1.62%	29,559	4.31%
Perry	2,761	-4.09%	2,620	-9.50%
Piatt	3,030	-5.75%	2,812	-12.18%
Pike	2,540	-8.31%	2,293	-16.56%
Pope	477	-14.45%	387	-33.38%
Pulaski	1,052	-12.30%	885	-28.61%
Putnam	903	-3.84%	858	-8.94%

(table continues)

Table 3 (continued)

COUNTY	PROJECTED ENROLLMENT FOR 2007-08	PERCENT CHANGE OVER 2003-04	PROJECTED ENROLLMENT FOR 2012-13	PERCENT CHANGE OVER 2003-04
Randolph	4,054	-6.12%	3,744	-13.20%
Richland	2,156	-10.78%	1,858	-23.38%
Rock Island	22,511	-3.40%	21,596	-7.02%
St. Clair	43,123	-1.76%	42,163	-4.08%
Saline	4,170	0.71%	4,233	2.99%
Sangamon	27,765	0.12%	27,789	0.19%
Schuyler	1,022	-2.88%	990	-5.75%
Scott	965	-2.12%	929	-7.74%
Shelby	2,875	-19.28%	2,182	-40.43%
Stark	1,000	-6.66%	918	-15.30%
Stephenson	6,884	-6.32%	6,356	-13.14%
Tazewell	18,314	-3.69%	17,441	-8.55%
Union	3,215	-0.41%	3,213	0.39%
Vermilion	13,638	-0.13%	13,644	0.75%
Wabash	1,688	-10.33%	1,475	-20.81%
Warren	2,556	-7.39%	2,323	-16.25%
Washington	2,153	-0.89%	2,132	-1.19%
Wayne	2,464	-5.45%	2,311	-10.11%
White	2,268	-8.59%	2,017	-19.07%
Whiteside	9,054	-5.87%	8,367	-13.44%
Will	121,198	26.01%	161,849	68.26%
Williamson	9,124	-1.31%	8,968	-3.16%
Winnebago	47,369	6.18%	51,053	14.30%
Woodford	7,798	3.84%	8,196	9.82%

Table 4
Percent of Students by Race/Ethnicity

Year	Percent White	Percent Black	Percent Asian	Percent Hispanic
1995-96	64.37%	20.58%	3.08%	11.96%
1996-97	63.60%	20.62%	3.13%	12.65%
1997-98	62.97%	20.76%	3.17%	13.11%
1998-99	62.22%	20.81%	3.22%	13.75%
1999-00	61.42%	20.84%	3.29%	14.45%
2000-01	60.54%	20.80%	3.40%	15.26%
2001-02	59.59%	20.83%	3.50%	16.08%
2002-03	58.85%	20.77%	3.58%	16.79%
2003-04	58.01%	20.79%	3.65%	17.55%
2004-05	57.17%	20.74%	3.73%	18.35%
2005-06	56.30%	20.61%	3.85%	19.24%
2006-07	55.42%	20.44%	3.99%	20.14%
2007-08	54.60%	20.17%	4.11%	21.13%
2008-09	53.83%	19.85%	4.29%	22.03%
2009-10	53.13%	19.43%	4.49%	22.95%
2010-11	52.44%	18.98%	4.70%	23.88%
2011-12	51.79%	18.53%	4.91%	24.77%
2012-13	51.19%	18.02%	5.13%	25.65%

Note: The number of births for American Indian/Alaskan Natives are not available.