

ILLINOIS REGIONAL SAFE SCHOOLS PROGRAM

FY06 SUMMARY OF FINDINGS

November 2006

**DATA ANALYSIS AND PROGRESS REPORTING DIVISION
ILLINOIS STATE BOARD OF EDUCATION**

Summary of Findings

Introduction

This report presents an analysis of the 2006 data and the program's historical data from 2001 through 2006, on selected data variables. The data presented in this summary report comes from the end-of-year reports of 44 regional offices of education (ROEs), three intermediate service centers (ISC), and Chicago Public School District 299 participating in the regional safe schools program.

Public Act 89-383, enacted in 1995, provides Illinois with a system of alternative education programs for disruptive students in grades six through twelve. This act known as the **Safe Schools Law** indicates that *“Disruptive students typically derive little benefit from traditional school programs and may benefit substantially by being transferred from their current school into an alternative public school program, where their particular needs may be more appropriately and individually addressed and where they may benefit from the opportunity for a fresh start in a new educational environment”* (Section 13A-1e, PA 89-383). The law describes *disruptive students* as those who are subject to suspension or expulsion based on the disciplinary policies of the school district. With the enactment of the law, these students are now given the option, although voluntary on the part of the school district, to transfer to the **Regional Safe Schools Program** (a program established in 1996 to implement the Safe Schools Law), in lieu of suspension or expulsion. The proponents of the law strongly believed that *“administrative transfers may prove more productive for dealing with disruptive students than out-of-school suspension or expulsion”* (105 ILCS5/13A-1(i)).

The Regional Safe Schools Program

The Regional Safe Schools Program (RSSP), which was established to serve the educational needs of disruptive students, received an appropriation of \$15 million in 1997. The law provides that at least one RSSP program may be located within each of the Regional Offices of Education (ROE), and this program's location must be *“far away from any other school buildings or school grounds”* (105 ILCS5/13A-3(d)). The regional superintendent, except for Chicago Public School District, oversees the program. The oversight functions include, but are not limited to, determining the locations of the programs; implementing the programs' curriculum; hearing cases of parent objections for returning their children to the regular school program; establishing a budget; and disbursing RSSP funds.

Highlights

- 5,671 students were served in FY 06, 697 students more than the number of students served in FY 05 (**Chart 1**). FY 06 marks the first year the Regional Safe Schools program served over 5,000 students.
- Apart from what they received from the general State Aid, RSSP programs received \$18,035,500 in state funds in FY 06, an increase of \$1,000,000 from what they received in FY 05. Since the number of students served by RSSP in 2006 has also increased, the cost per student in RSSP, using state funds alone, was \$3,180. This is lower than the cost per student in FY 05 (\$3,618), and much lower than the cost per student in FY 04 (\$4,048).

- RSSP enrolled more suspension-eligible students in 2006 which changed the trend of the student population served. For three consecutive years, prior to 2006, students served in RSSP were predominantly expulsion-eligible students. In FY 06, the trend changed in that more suspension-eligible were served (43%), 7% more than expulsion-eligible students. Students who were expelled and readmitted at the school district; and subsequently enrolled in RSSP stayed at over 20% (*Chart 2*).
- Taking drugs or selling drugs is still the number one reason for students' transfer to RSSP, followed by assault (verbal, physical, including staff assault).
- Involvement in drugs, alcohol, gangs, possessing weapons, committing assaults, battery, sex violations, vandalism, burglary, robbery, threats, or pranks, are offenses commonly committed by expulsion-eligible or expelled students; whereas, exhibiting gross or disruptive behavior, computer hacking, insubordination, non-compliance with rules, or bullying are offenses commonly committed by suspension-eligible students (*Table 1*).
- Chicago Public Schools (ROE 15) continues to enroll the highest number of students in RSSP. The Will County ROE (ROE 56) ranks second in student enrollment. ROE 54 is the only regional unit whose entire enrollment consists of expelled/readmitted students. ROE 04's students are also 98% expelled/readmitted. (*Table 2*).
- The majority of expelled/readmitted students are blacks (68%), while the majority of suspension eligible students are whites (51%).
- RSSP continues to enroll students with special needs (IEP). About 12% of RSSP students in 2006 are special education students (*Chart 3*).
- RSSP increasingly enrolls minority students. In FY 06, approximately 60% of RSSP students belong to minority ethnic groups. In particular, 41% of RSSP students are blacks and 16% are Hispanics. Hispanic student enrollment increased by 2% in 2006 from 2005, the highest percent increase in enrollment experienced by an ethnic group (*Chart 4*).
- Student enrollment in RSSP is predominantly male (*Chart 5*).
- Grade 9 students continue to lead student enrollments in RSSP. In particular, RSSP continues to enroll more high school students than elementary students (*Chart 6*).
- Over 90% of RSSP students have written Alternative Education Plans (IEP) or received academic instruction. Technically, all students or 100% of RSSP students should have received these services. It is not known from this evaluation why there were about 10% students with no AEPs and 6% with no academic instruction reported (*Chart 7*).
- While almost all students (98.5%) enrolled in RSSP have behavioral problems (some probably more grievous than others, based on the reasons for students' transfer to RSSP), less than 90% of students received behavior modification training, life skills training, or counseling, services, which theoretically would have been appropriate to address the students' behavioral problems.

- 81% of RSSP students achieved positive outcome(s). These outcomes include earning high school credit, completing a GED, advancing to the next grade, graduating from high school, graduating from elementary school, advancing to the next grade, returning to the regular school, or employment related to curriculum (*Chart 8*).

Chart 1. Illinois RSSP Student Enrollments, 2001 through 2006

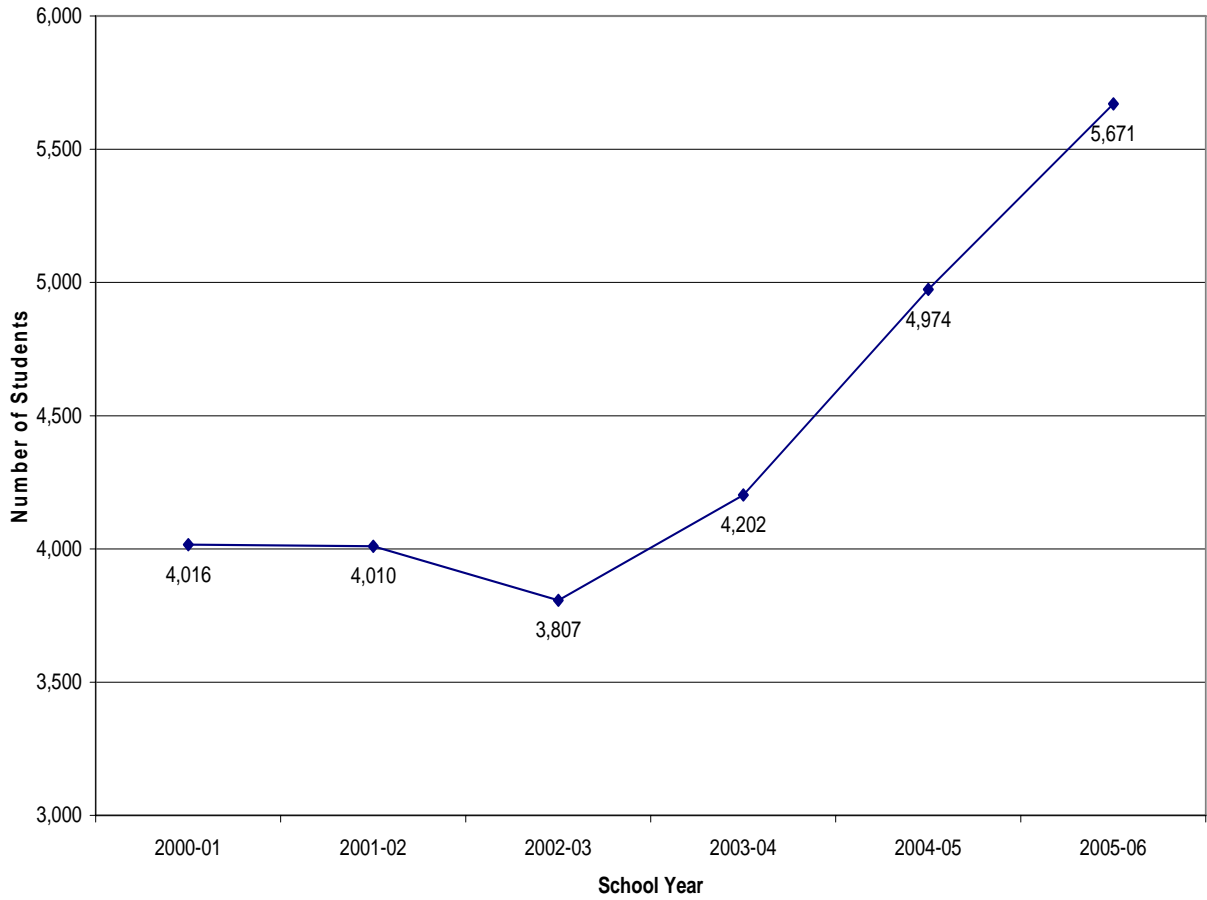


Chart 2. Percent Enrollment in Illinois RSSP by Student Eligibility, 2001 through 2006

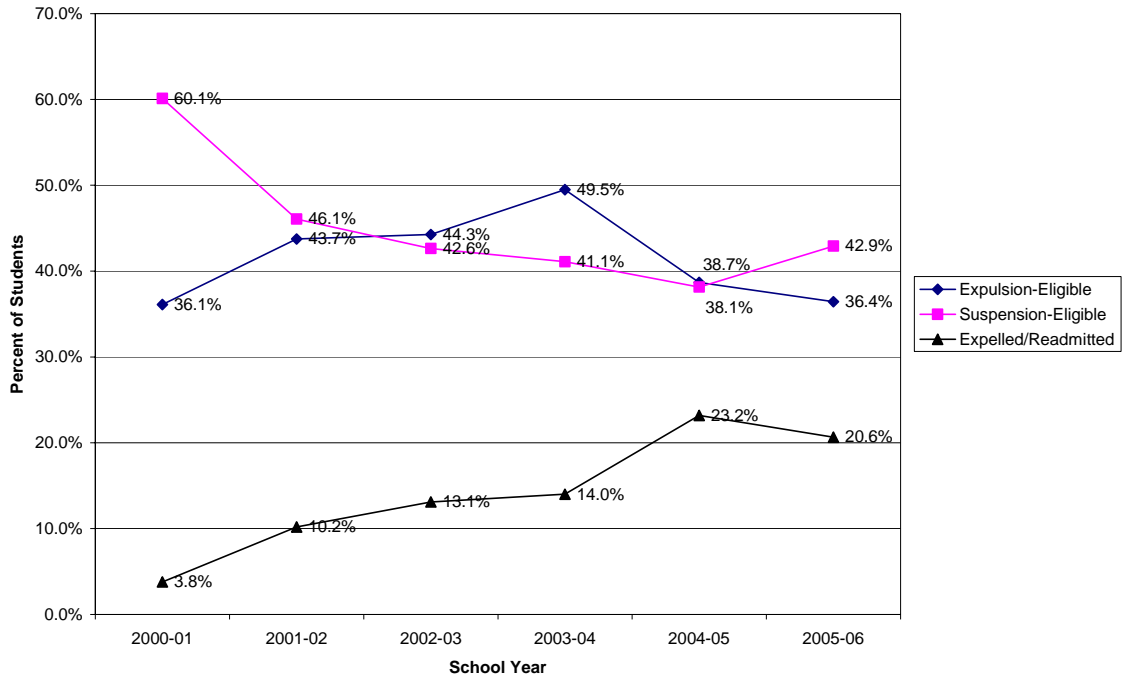


Chart 3. Percent Enrollment in Illinois RSSP by Student Educational Status 2001 through 2006

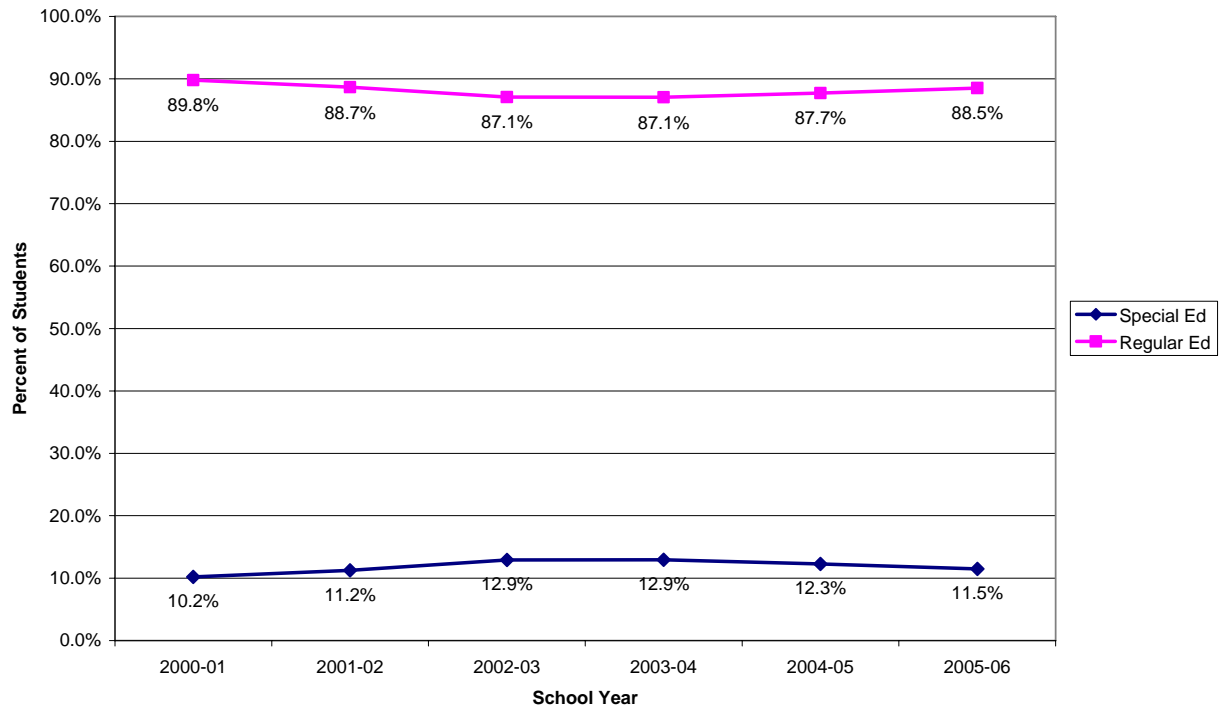


Chart 4. Percent Enrollment in Illinois RSSP by Selected Student Ethnic Groups, 2001 through 2006

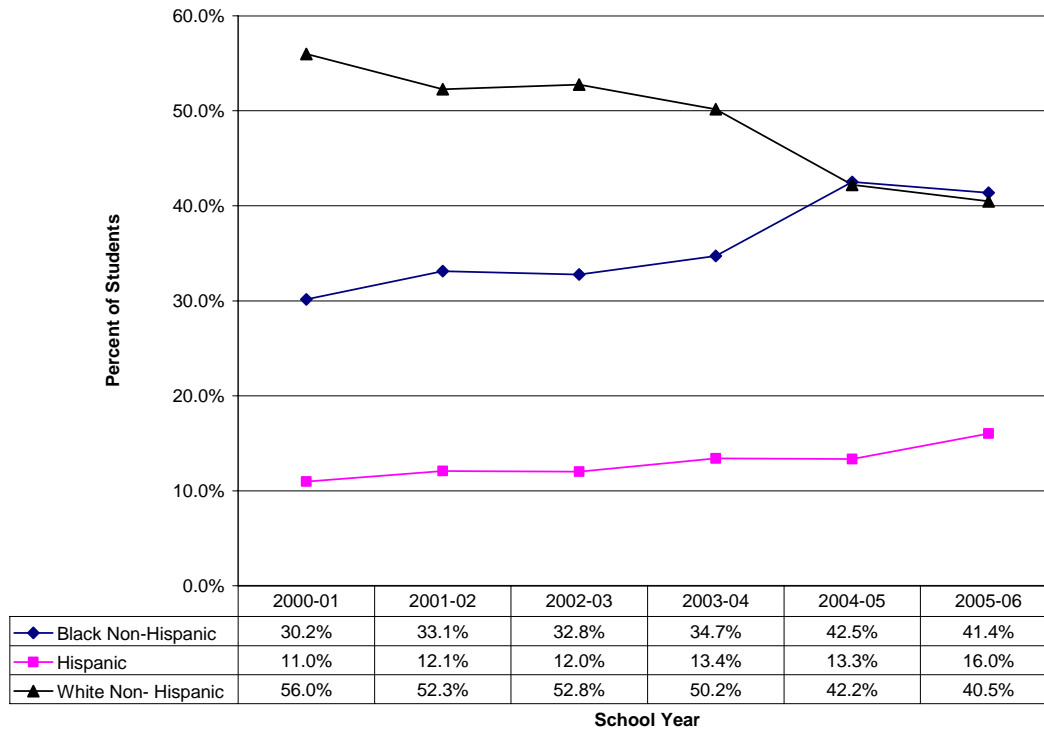


Chart 5. Percent Enrollment in Illinois RSSP by Student Gender, 2001 through 2006

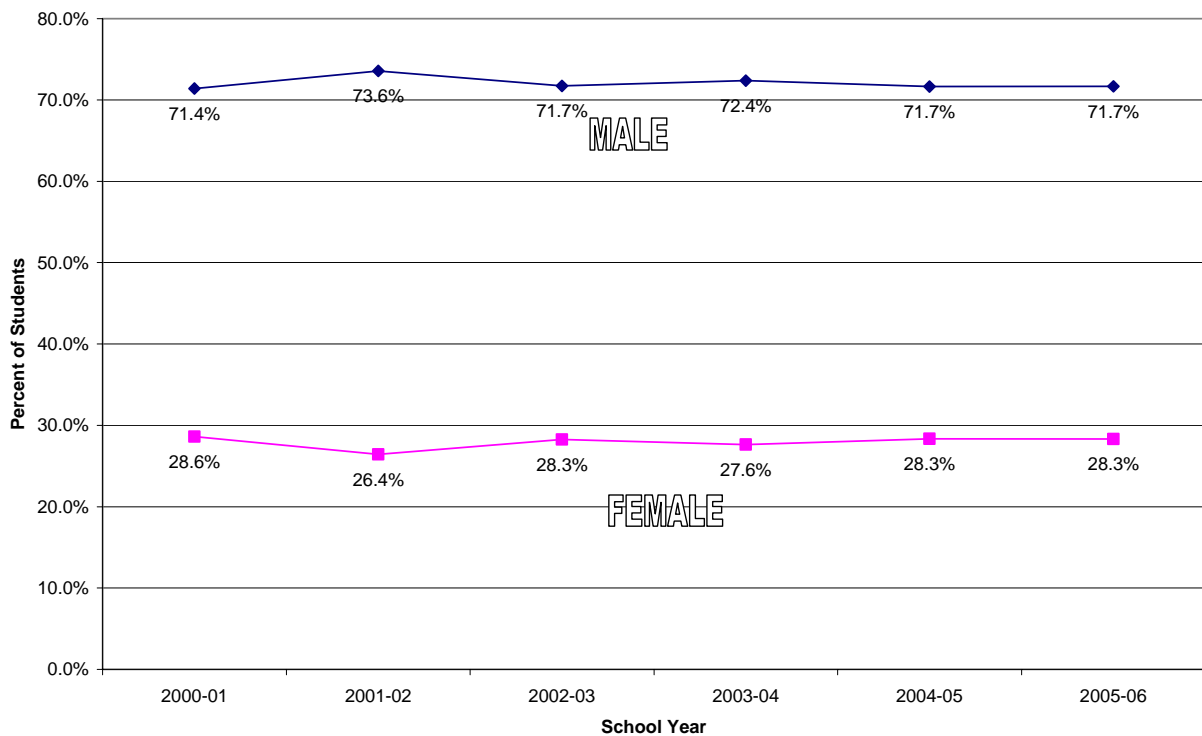


Chart 6. Percent Enrollment in Illinois RSP by Student Grade, 2001 through 2006

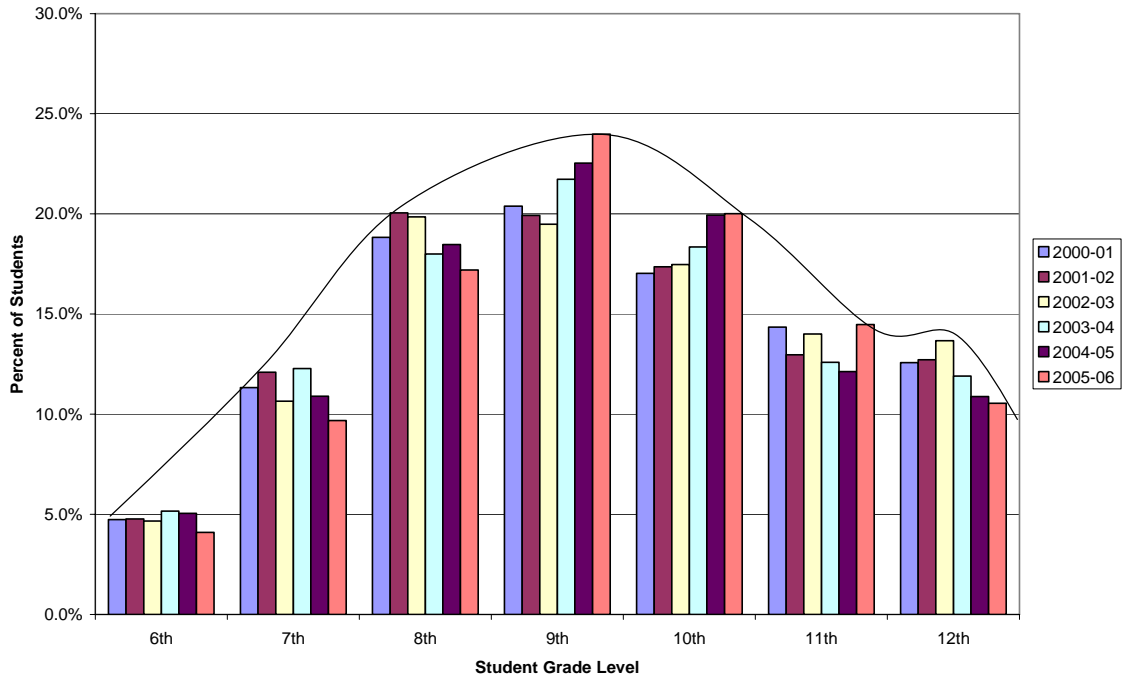
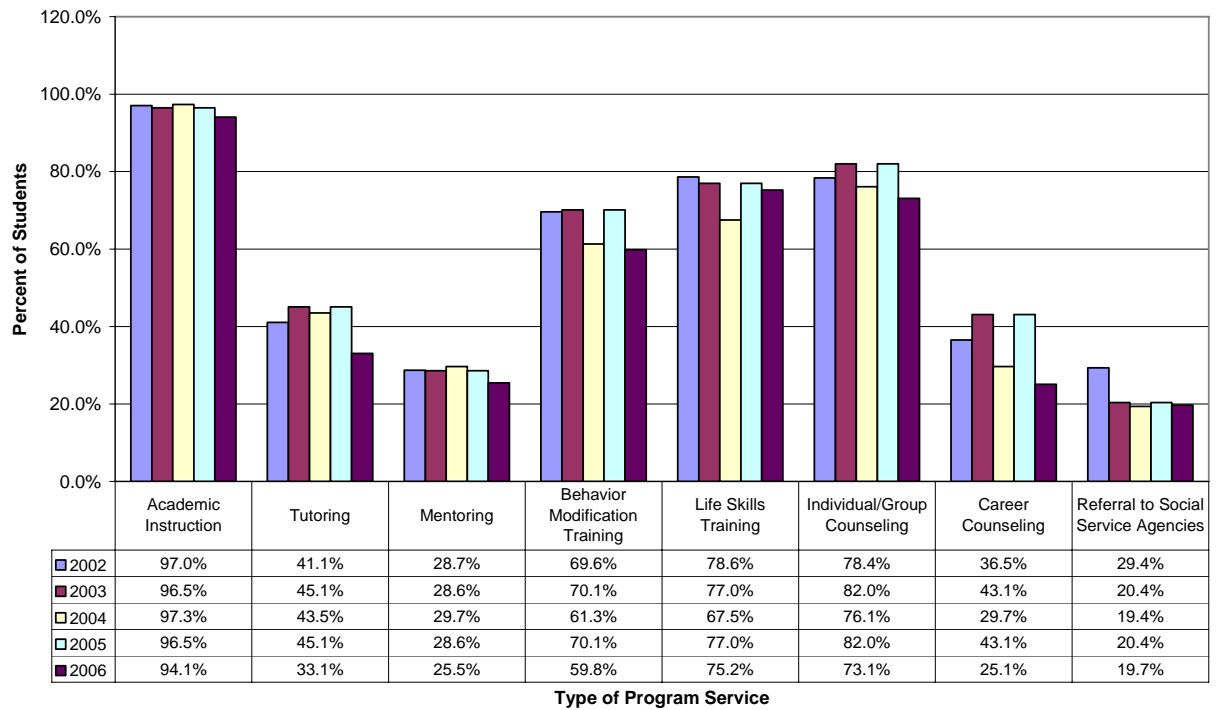


Chart 7. Percent of Illinois-RSP Students Receiving Specific Types of Services 2002 through 2006



**Chart 8. Percent of Illinois-RSSP Students Achieving Specific Educational Outcomes
2002 through 2006**

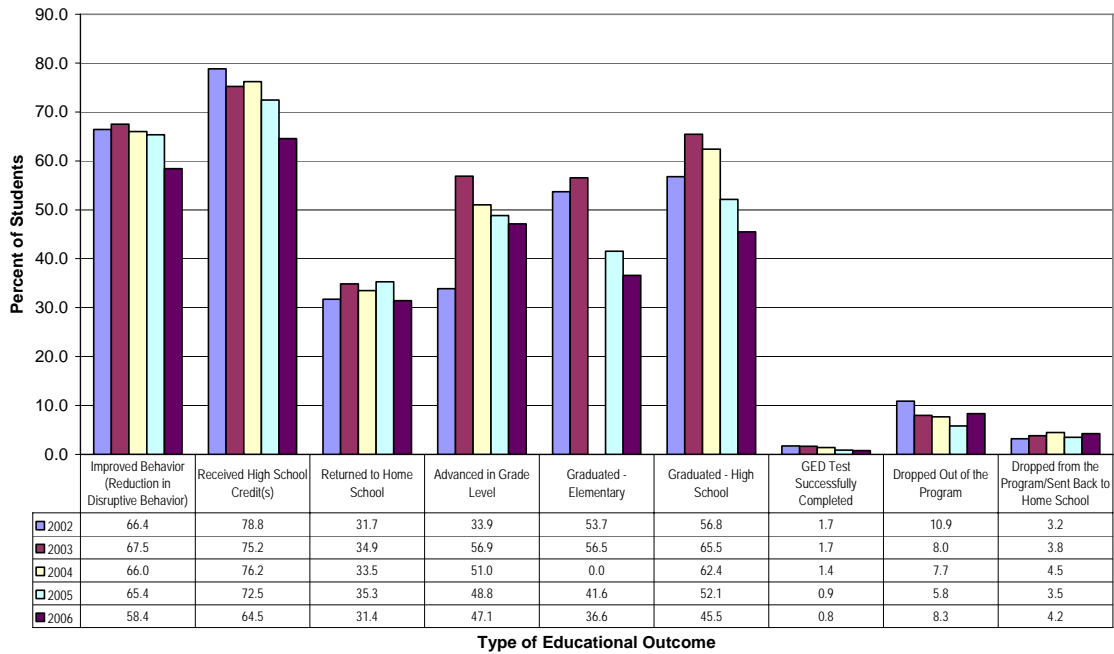


Table 1. Reason(s) for Student's Administrative Transfer to RSSP, 2006

Reason for Administrative Transfer	Student Eligibility							Row Total
	Suspension-Eligible		Expulsion-Eligible		Expelled and Readmitted		Pct of Column Total	
	Number	Pct of Row Total	Number	Pct of Row Total	Number	Pct of Row Total		
Academics	20	95.2	1	4.8	0	0.0	21	0.4
Adjustment problems	13	92.9	1	7.1	0	0.0	14	0.2
Alcohol	5	35.7	8	57.1	1	7.1	14	0.2
Assault (verbal, physical, including staff assault)	334	36.7	441	48.5	134	14.7	909	16.0
Attendance/Truancy	29	64.4	15	33.3	1	2.2	45	0.8
Attitude/Disciplinary/Behavioral problems	139	72.0	28	14.5	26	13.5	193	3.4
Battery	10	5.9	32	18.9	127	75.1	169	3.0
Bomb threats	0	0.0	0	0.0	2	100.0	2	0.0
Bullying	11	52.4	10	47.6	0	0.0	21	0.4
Burglary/Robbery	0	0.0	4	13.3	26	86.7	30	0.5
Chronic disruptions	42	97.7	1	2.3	0	0.0	43	0.8
Computer hacking	399	76.1	102	19.5	23	4.4	524	9.2
Court ordered	4	57.1	1	14.3	2	28.6	7	0.1
Drugs	163	17.4	509	54.2	267	28.4	939	16.6
Fighting	40	43.5	44	47.8	8	8.7	92	1.6
Gang	36	26.7	76	56.3	23	17.0	135	2.4
Gross Misconduct/Behavior	76	61.8	32	26.0	15	12.2	123	2.2
Harassment	6	60.0	4	40.0	0	0.0	10	0.2
Insubordination	154	65.5	64	27.2	17	7.2	235	4.1
Non-compliant/Violated rules	27	84.4	3	9.4	2	6.3	32	0.6
Pranks	60	32.1	88	47.1	39	20.9	187	3.3
Property damage	9	90.0	1	10.0	0	0.0	10	0.2
Sex violation	0	0.0	5	17.9	23	82.1	28	0.5
Shooting	0	0.0	1	100.0	0	0.0	1	0.0
Theft, arson, or unwarranted pulling of a fire alarm	345	81.9	58	13.8	18	4.3	421	7.4
Threats	405	52.8	248	32.3	114	14.9	767	13.5
Vandalism	1	7.1	10	71.4	3	21.4	14	0.2
Weapons	72	12.1	297	49.7	228	38.2	597	10.5
Unduplicated Total	2,434	42.9	2,066	36.4	1,171	20.6	5,671	100.0

Table 2. Number of Students Enrolled in RSSP by ROE with ROE Enrollment Compared to the State, 2006
(Numbers in parenthesis indicate that ROE serves less (percent) students relative to the state. Numbers without parenthesis indicate that ROE serves more (percent) students relative to the state.)

Region Number	Student Eligibility										
	Suspension-Eligible			Expulsion-Eligible			Expelled and Readmitted			Row total	
	Number	Pct of Row Total	Compared to State	Number	Pct of Row Total	Compared to State	Number	Pct of Row Total	Compared to State	Number	Pct of Column Total
01	99	97.1	54.1	3	2.9	(33.5)	0	0.0	(20.6)	102	1.8
02	18	41.9	(1.1)	23	53.5	17.1	2	4.7	(16.0)	43	0.8
03	29	87.9	45.0	1	3.0	(33.4)	3	9.1	(11.6)	33	0.6
04	1	0.9	(42.0)	1	0.9	(35.5)	107	98.2	77.5	109	1.9
08	54	91.5	48.6	2	3.4	(33.0)	3	5.1	(15.6)	59	1.0
09	101	78.3	35.4	22	17.1	(19.4)	6	4.7	(16.0)	129	2.3
10	26	43.3	0.4	34	56.7	20.2	0	0.0	(20.6)	60	1.1
11	72	59.5	16.6	35	28.9	(7.5)	14	11.6	(9.1)	121	2.1
12	20	31.3	(11.7)	41	64.1	27.6	3	4.7	(16.0)	64	1.1
13	23	56.1	13.2	18	43.9	7.5	0	0.0	(20.6)	41	0.7
14a	153	57.5	14.6	102	38.3	1.9	11	4.1	(16.5)	266	4.7
14b	28	17.9	(25.0)	111	71.2	34.7	17	10.9	(9.8)	156	2.8
14c	288	85.5	42.5	48	14.2	(22.2)	1	0.3	(20.4)	337	5.9
15	1	0.1	(42.8)	341	33.3	(3.1)	681	66.6	45.9	1,023	18.0
16	19	36.5	(6.4)	22	42.3	5.9	11	21.2	0.5	52	0.9
17	49	30.1	(12.9)	114	69.9	33.5	0	0.0	(20.6)	163	2.9
19	57	31.1	(11.8)	122	66.7	30.2	4	2.2	(18.5)	183	3.2
20	19	76.0	33.1	3	12.0	(24.4)	3	12.0	(8.6)	25	0.4
21	15	71.4	28.5	6	28.6	(7.9)	0	0.0	(20.6)	21	0.4
22	14	51.9	8.9	0	0.0	(36.4)	13	48.1	27.5	27	0.5
24	143	63.3	20.4	74	32.7	(3.7)	9	4.0	(16.7)	226	4.0
25	13	65.0	22.1	7	35.0	(1.4)	0	0.0	(20.6)	20	0.4
26	9	30.0	(12.9)	20	66.7	30.2	1	3.3	(17.3)	30	0.5
27	8	57.1	14.2	2	14.3	(22.1)	4	28.6	7.9	14	0.2
28	37	86.0	43.1	3	7.0	(29.5)	3	7.0	(13.7)	43	0.8
30	14	51.9	8.9	13	48.1	11.7	0	0.0	(20.6)	27	0.5
31	92	44.9	2.0	113	55.1	18.7	0	0.0	(20.6)	205	3.6
32	77	67.5	24.6	37	32.5	(4.0)	0	0.0	(20.6)	114	2.0
33	47	81.0	38.1	0	0.0	(36.4)	11	19.0	(1.7)	58	1.0
34	10	8.1	(34.9)	83	66.9	30.5	31	25.0	4.4	124	2.2
35	52	64.2	21.3	23	28.4	(8.0)	6	7.4	(13.2)	81	1.4
38	52	85.2	42.3	6	9.8	(26.6)	3	4.9	(15.7)	61	1.1
39	30	52.6	9.7	14	24.6	(11.9)	13	22.8	2.2	57	1.0
40	18	43.9	1.0	23	56.1	19.7	0	0.0	(20.6)	41	0.7
41	32	36.4	(6.6)	55	62.5	26.1	1	1.1	(19.5)	88	1.6
43	28	49.1	6.2	24	42.1	5.7	5	8.8	(11.9)	57	1.0
44	21	46.7	3.7	23	51.1	14.7	1	2.2	(18.4)	45	0.8
45	25	75.8	32.8	8	24.2	(12.2)	0	0.0	(20.6)	33	0.6
46	26	81.3	38.3	6	18.8	(17.7)	0	0.0	(20.6)	32	0.6
47	18	48.6	5.7	16	43.2	6.8	3	8.1	(12.5)	37	0.7
48	16	9.9	(33.0)	138	85.7	49.3	7	4.3	(16.3)	161	2.8
49	40	66.7	23.7	14	23.3	(13.1)	6	10.0	(10.6)	60	1.1
50	35	53.8	10.9	30	46.2	9.7	0	0.0	(20.6)	65	1.1
51	29	30.2	(12.7)	57	59.4	22.9	10	10.4	(10.2)	96	1.7
53	0	0.0	(42.9)	17	28.8	(7.6)	42	71.2	50.5	59	1.0
54	0	0.0	(42.9)	0	0.0	(36.4)	41	100.0	79.4	41	0.7
55	5	35.7	(7.2)	9	64.3	27.9	0	0.0	(20.6)	14	0.2
56	471	61.3	18.4	202	26.3	(10.1)	95	12.4	(8.3)	768	13.5
Column Total	2,434	42.9		2,066	36.4		1,171	20.6		5,671	100.0