

ILLINOIS STATE BOARD OF EDUCATION MEETING
December 15-16, 2010

TO: Illinois State Board of Education

FROM: Christopher A. Koch, Ed.D., State Superintendent of Education 
Linda Riley Mitchell, Chief Financial Officer 
Donald W. Evans, Director of Human Resources 

Agenda Topic: Information Item: SBE Fiscal & Administrative Monthly Reports

Materials: Appropriations and Spending by Program – FY11
Financial Status Report (contract & grant detail) – FY11
Comparative Statement of Expenditures – FY11
Monthly Headcount Graph, Staff Detail, Personnel Transactions

Purpose of Agenda Item

To provide the Board standard reports with key information on fiscal and administrative activities of the state Agency.

Relationship to/Implications for the State Board's Strategic Plan

Not applicable – informational item only.

Expected Outcome(s) of Agenda Item

Not applicable – informational item only.

Background Information

In June 2002, the State Board adopted bylaws outlining a new committee structure under which fiscal, audit and operations issues will be handled by the Finance and Audit Committee. The Superintendent requested that the Agency organize and standardize the financial and headcount data provided to the Board for their future policy work and decision making.

Currently, the following reports are provided:

1. Budget/Annual Report (annually in January)
2. Condition of Public Education (December)
3. Comptroller SEA Report (annually in February)
4. Appropriation and Expenditure (monthly)
5. Financial Status Report – Contract/Grant Detail (monthly)
6. Comparative Statement of Expenditures (monthly)
7. Headcount Reports (monthly)
Personnel Transactions, Staff Detail by Division, & Monthly Headcount Graph

Analysis and Implications for Policy, Budget, Legislative Action and Communications

The monthly or Quarterly Fiscal and Headcount Reports were first provided to the Board in August 2002. These reports provide information regarding staffing and funding as well as details of contracts over \$50,000 and grants the Agency is processing.

All contracts and grants totaling over \$1 million are reviewed at the Board level. Included in this month's review is:

- WIDA Consortium – Enhanced Assessment Grant – Spanish Academic Language Standards and Assessment (SALSA)

Superintendent's Recommendation

None needed.

Next Steps

Continue to provide these reports pursuant to the schedule above.

Illinois State Board of Education
2011 Appropriation & Spending by Program 07/01/2010 thru 11/30/2010

(Dollars in Thousands)

Initiatives	Appropriation			YTD Expenditures		
	Total	Grants	Admin	Total	Grants	Admin
STATE						
Distributive Grants	<u>\$6,449,851.6</u>	<u>\$6,449,851.6</u>	<u>\$0.0</u>	<u>\$2,163,608.2</u>	<u>\$2,163,608.2</u>	<u>\$0.0</u>
General State Aid	\$4,600,305.1	\$4,600,305.1	\$0.0	\$1,658,977.6	\$1,658,977.6	\$0.0
General State Aid/Hold Harmless	\$0.0	\$0.0	\$0.0	\$0.0	\$0.0	\$0.0
Charter Schools - Transition Impact Aid	\$0.0	\$0.0	\$0.0	\$0.0	\$0.0	\$0.0
District Consolidation Cost	\$3,700.0	\$3,700.0	\$0.0	\$3,228.6	\$3,228.6	\$0.0
Fast Growth Grants	\$0.0	\$0.0	\$0.0	\$0.0	\$0.0	\$0.0
Gifted Education	\$0.0	\$0.0	\$0.0	\$0.0	\$0.0	\$0.0
Homeless Education	\$0.0	\$0.0	\$0.0	\$0.0	\$0.0	\$0.0
School Breakfast Incentive Program	\$0.0	\$0.0	\$0.0	\$0.0	\$0.0	\$0.0
Transition Assistance	\$0.0	\$0.0	\$0.0	\$0.0	\$0.0	\$0.0
Mandated Categoricals	<u>\$1,845,846.5</u>	<u>\$1,845,846.5</u>	<u>\$0.0</u>	<u>\$501,402.0</u>	<u>\$501,402.0</u>	<u>\$0.0</u>
Illinois Free Lunch/Breakfast	\$26,300.0	\$26,300.0	\$0.0	\$16,145.1	\$16,145.1	\$0.0
Orphanage Tuition 18-3 (Reg Ed)	\$13,000.0	\$13,000.0	\$0.0	\$2,952.8	\$2,952.8	\$0.0
Sp-Ed - Extraordinary Services	\$334,236.8	\$334,236.8	\$0.0	\$59,159.9	\$59,159.9	\$0.0
Sp-Ed - Orphanage Tuition 14-7.03	\$120,200.0	\$120,200.0	\$0.0	\$46,360.1	\$46,360.1	\$0.0
Sp-Ed - Personnel Reimbursement	\$459,600.0	\$459,600.0	\$0.0	\$132,059.8	\$132,059.8	\$0.0
Sp-Ed - Private Tuition	\$181,100.0	\$181,100.0	\$0.0	\$110,874.8	\$110,874.8	\$0.0
Sp-Ed - Summer School	\$11,700.0	\$11,700.0	\$0.0	\$6,364.8	\$6,364.8	\$0.0
Sp-Ed - Transportation	\$429,700.0	\$429,700.0	\$0.0	\$70,235.7	\$70,235.7	\$0.0
Transportation - Regular/Vocational	\$270,009.7	\$270,009.7	\$0.0	\$57,249.0	\$57,249.0	\$0.0
Standards - Assessment & Accountability	<u>\$30,137.5</u>	<u>\$1,002.8</u>	<u>\$29,134.7</u>	<u>\$695.4</u>	<u>\$0.0</u>	<u>\$695.4</u>
American Diploma Project	\$400.0	\$0.0	\$400.0	\$260.0	\$0.0	\$260.0
Assessments	\$26,334.7	\$0.0	\$26,334.7	\$435.4	\$0.0	\$435.4
Growth Model	\$2,400.0	\$0.0	\$2,400.0	\$0.0	\$0.0	\$0.0
System of Support	\$1,002.8	\$1,002.8	\$0.0	\$0.0	\$0.0	\$0.0
Ensuring Quality Ed Personnel	<u>\$9,440.2</u>	<u>\$8,609.4</u>	<u>\$830.8</u>	<u>\$498.4</u>	<u>\$498.4</u>	<u>\$0.0</u>
Grow Your Own Teachers	\$0.0	\$0.0	\$0.0	\$0.0	\$0.0	\$0.0
National Board Certification	\$2,756.4	\$2,756.4	\$0.0	\$0.0	\$0.0	\$0.0
Principal Mentoring Program	\$830.8	\$0.0	\$830.8	\$0.0	\$0.0	\$0.0
Teach for America	\$225.0	\$225.0	\$0.0	\$0.0	\$0.0	\$0.0
Teacher and Admin. Mentoring Program	\$5,628.0	\$5,628.0	\$0.0	\$498.4	\$498.4	\$0.0
Early Childhood	<u>\$342,235.4</u>	<u>\$340,093.3</u>	<u>\$2,142.1</u>	<u>\$117,478.2</u>	<u>\$116,986.9</u>	<u>\$491.3</u>

Initiatives	Appropriation			YTD Expenditures		
	Total	Grants	Admin	Total	Grants	Admin
Academic Difficulty	<u>\$86,782.1</u>	<u>\$86,782.1</u>	<u>\$0.0</u>	<u>\$9,680.7</u>	<u>\$9,680.7</u>	<u>\$0.0</u>
Alternative Learning/Regional Safe Schools	\$9,341.9	\$9,341.9	\$0.0	\$2,233.7	\$2,233.7	\$0.0
Bilingual Education	\$63,381.2	\$63,381.2	\$0.0	\$3,253.0	\$3,253.0	\$0.0
Truant Alternative Optional Education	\$14,059.0	\$14,059.0	\$0.0	\$4,193.9	\$4,193.9	\$0.0
Learning Technologies	<u>\$3,335.8</u>	<u>\$2,175.8</u>	<u>\$1,160.0</u>	<u>\$1,350.2</u>	<u>\$780.2</u>	<u>\$570.0</u>
Technology for Success	\$3,335.8	\$2,175.8	\$1,160.0	\$1,350.2	\$780.2	\$570.0
School Infrastructure	<u>\$0.0</u>	<u>\$0.0</u>	<u>\$0.0</u>	<u>\$0.0</u>	<u>\$0.0</u>	<u>\$0.0</u>
Temporary Relocation Expense Fund Deposit	\$0.0	\$0.0	\$0.0	\$0.0	\$0.0	\$0.0
Career Preparation	<u>\$40,509.7</u>	<u>\$40,509.7</u>	<u>\$0.0</u>	<u>\$18,684.1</u>	<u>\$18,684.1</u>	<u>\$0.0</u>
Agricultural Education	\$1,947.6	\$1,947.6	\$0.0	\$442.9	\$442.9	\$0.0
Career and Technical Education	\$38,562.1	\$38,562.1	\$0.0	\$18,241.1	\$18,241.1	\$0.0
Illinois Governmental Internship Program	\$0.0	\$0.0	\$0.0	\$0.0	\$0.0	\$0.0
Jobs for Illinois Graduates	\$0.0	\$0.0	\$0.0	\$0.0	\$0.0	\$0.0
Regional Services	<u>\$13,620.1</u>	<u>\$13,441.5</u>	<u>\$178.6</u>	<u>\$5,532.1</u>	<u>\$5,466.4</u>	<u>\$65.7</u>
Regional Superintendent Initiatives	\$0.0	\$0.0	\$0.0	\$0.0	\$0.0	\$0.0
ROE - Bus Driver Training	\$70.0	\$70.0	\$0.0	\$70.0	\$70.0	\$0.0
ROE - Salaries	\$9,100.0	\$9,100.0	\$0.0	\$3,562.7	\$3,562.7	\$0.0
ROE - School Services	\$4,450.1	\$4,271.5	\$178.6	\$1,899.4	\$1,833.8	\$65.7
Strategic Plan	<u>\$237.5</u>	<u>\$0.0</u>	<u>\$237.5</u>	<u>\$55.8</u>	<u>\$0.0</u>	<u>\$55.8</u>
Strategic Plan	\$237.5	\$0.0	\$237.5	\$55.8	\$0.0	\$55.8
Administration	<u>\$24,424.2</u>	<u>\$0.0</u>	<u>\$24,424.2</u>	<u>\$8,880.5</u>	<u>\$0.0</u>	<u>\$8,880.5</u>
Targeted Initiatives	<u>\$19,187.1</u>	<u>\$17,981.1</u>	<u>\$1,206.0</u>	<u>\$2,400.8</u>	<u>\$2,113.6</u>	<u>\$287.2</u>
Advanced Placement Classes	\$527.0	\$527.0	\$0.0	\$11.0	\$11.0	\$0.0
After School Matters	\$4,000.0	\$4,000.0	\$0.0	\$0.0	\$0.0	\$0.0
Arts and Foreign Language	\$1,280.0	\$1,280.0	\$0.0	\$0.0	\$0.0	\$0.0
Autism Project	\$100.0	\$100.0	\$0.0	\$0.0	\$0.0	\$0.0
Blind & Dyslexic	\$816.6	\$816.6	\$0.0	\$0.0	\$0.0	\$0.0
Childrens Mental Health Partnership	\$1,620.0	\$1,464.0	\$156.0	\$39.0	\$0.0	\$39.0
Community Residential Services Authority	\$575.0	\$0.0	\$575.0	\$206.7	\$0.0	\$206.7
Educator Misconduct Investigations	\$375.0	\$0.0	\$375.0	\$41.5	\$0.0	\$41.5
Materials Center for the Visually Impaired	\$1,421.1	\$1,421.1	\$0.0	\$580.0	\$580.0	\$0.0
Philip J. Rock Center & School	\$3,577.8	\$3,577.8	\$0.0	\$1,300.0	\$1,300.0	\$0.0
Re-Enrollment Student Program	\$3,600.0	\$3,600.0	\$0.0	\$0.0	\$0.0	\$0.0
Response to Intervention	\$1,072.0	\$972.0	\$100.0	\$0.0	\$0.0	\$0.0
Tax Equivalent Grants	\$222.6	\$222.6	\$0.0	\$222.6	\$222.6	\$0.0

Initiatives	Appropriation			YTD Expenditures		
	Total	Grants	Admin	Total	Grants	Admin
Reappropriations	<u>\$0.0</u>	<u>\$0.0</u>	<u>\$0.0</u>	<u>\$0.0</u>	<u>\$0.0</u>	<u>\$0.0</u>
Textbook Loan Reappropriations	\$0.0	\$0.0	\$0.0	\$0.0	\$0.0	\$0.0

NON STATE

School Infrastructure Fund	<u>\$723.8</u>	<u>\$0.0</u>	<u>\$723.8</u>	<u>\$47.6</u>	<u>\$0.0</u>	<u>\$47.6</u>
School Infrastructure (Debt Admin)	\$723.8	\$0.0	\$723.8	\$47.6	\$0.0	\$47.6
Driver Education	<u>\$24,321.3</u>	<u>\$24,229.6</u>	<u>\$91.7</u>	<u>\$6,070.2</u>	<u>\$6,057.4</u>	<u>\$12.8</u>
Other Funds	<u>\$163,828.9</u>	<u>\$142,420.0</u>	<u>\$21,408.9</u>	<u>\$1,417.4</u>	<u>\$0.0</u>	<u>\$1,417.4</u>
Charter Schools Revolving Loan Fund	\$20.0	\$20.0	\$0.0	\$0.0	\$0.0	\$0.0
Emergency Financial Assistance Fund	\$1,000.0	\$1,000.0	\$0.0	\$0.0	\$0.0	\$0.0
Indirect Costs	\$7,015.2	\$0.0	\$7,015.2	\$1,134.8	\$0.0	\$1,134.8
ISBE - Special Purpose Trust Fund	\$8,484.8	\$0.0	\$8,484.8	\$0.0	\$0.0	\$0.0
ISBE Teacher Certificate Institute Fund	\$2,208.9	\$0.0	\$2,208.9	\$71.7	\$0.0	\$71.7
Capital Development Fund-School Const.	\$25,000.0	\$25,000.0	\$0.0	\$0.0	\$0.0	\$0.0
School Construction Maintenance Fund	\$100,000.0	\$100,000.0	\$0.0	\$0.0	\$0.0	\$0.0
Technology Immersion - Build IL Bond Fund	\$10,000.0	\$10,000.0	\$0.0	\$0.0	\$0.0	\$0.0
School Technology Revolving Loan	\$5,000.0	\$5,000.0	\$0.0	\$0.0	\$0.0	\$0.0
Teacher Certification Fee Revolving Fund	\$3,700.0	\$0.0	\$3,700.0	\$210.9	\$0.0	\$210.9
Temporary Relocation Revolving Fund	\$1,400.0	\$1,400.0	\$0.0	\$0.0	\$0.0	\$0.0

FEDERAL

Federal Funds	<u>\$4,542,607.3</u>	<u>\$4,455,285.5</u>	<u>\$87,321.9</u>	<u>\$454,623.4</u>	<u>\$431,269.3</u>	<u>\$23,354.1</u>
Advanced Placement Fee Payment	\$2,099.1	\$2,000.0	\$99.1	\$1,308.0	\$1,308.0	\$0.0
ARRA - Child Nutrition Sch Lunch Equipment	\$3,657.3	\$3,657.3	\$0.0	\$0.0	\$0.0	\$0.0
ARRA - Longitudinal Data Systems	\$4,300.0	\$0.0	\$4,300.0	\$8.5	\$0.0	\$8.5
ARRA - IDEA - Part B	\$506,479.8	\$506,479.8	\$0.0	\$31,746.0	\$31,746.0	\$0.0
ARRA - IDEA - Pre-School	\$18,311.5	\$18,311.5	\$0.0	\$604.5	\$604.5	\$0.0
ARRA - Education Jobs Fund	\$415,397.8	\$415,397.8	\$0.0	\$93,524.8	\$93,524.8	\$0.0
ARRA - McKinney Homeless	\$2,581.6	\$2,581.6	\$0.0	\$1.7	\$1.7	\$0.0
ARRA - Race to the Top	\$400,000.0	\$400,000.0	\$0.0	\$0.0	\$0.0	\$0.0
ARRA - Title I	\$302,441.5	\$302,441.5	\$0.0	\$2,441.5	\$2,441.5	\$0.0
ARRA - Titel I School Improvement (1003G)	\$242,023.0	\$242,023.0	\$0.0	\$0.0	\$0.0	\$0.0
ARRA - Title II Technology	\$26,523.2	\$26,196.1	\$327.1	\$2,107.8	\$2,040.0	\$67.8
Career & Technical Education	\$56,289.9	\$55,000.0	\$1,289.9	\$12,067.1	\$11,807.0	\$260.1
Career & Technical Education - Technical Prep	\$5,175.0	\$5,000.0	\$175.0	\$541.7	\$479.1	\$62.6
Charter Schools	\$9,171.5	\$9,000.0	\$171.5	\$703.4	\$703.4	\$0.0
Child Nutrition	\$735,365.1	\$725,000.0	\$10,365.1	\$145,305.8	\$142,491.6	\$2,814.3
IDEA - Deaf Blind, Part C	\$450.0	\$450.0	\$0.0	\$91.4	\$91.4	\$0.0
IDEA - Improvement Plan	\$3,500.3	\$3,200.0	\$300.3	\$239.7	\$187.2	\$52.5

Initiatives	Appropriation			YTD Expenditures		
	Total	Grants	Admin	Total	Grants	Admin
IDEA - Model Outreach	\$400.0	\$400.0	\$0.0	\$0.0	\$0.0	\$0.0
IDEA - Pre-School	\$25,963.9	\$25,000.0	\$963.9	\$3,692.7	\$3,482.7	\$210.0
Illinois Purchase Care Review Board	\$360.7	\$0.0	\$360.7	\$154.9	\$0.0	\$154.9
Individuals with Disabilities Educ. Act, Pt. B	\$663,633.1	\$650,000.0	\$13,633.1	\$58,357.2	\$54,729.2	\$3,628.0
Integration of Schools & Mental Health Systems	\$0.0	\$0.0	\$0.0	\$0.0	\$0.0	\$0.0
Learn and Serve America	\$2,600.0	\$2,500.0	\$100.0	\$253.9	\$203.9	\$50.0
Longitudinal Data System	\$3,900.0	\$0.0	\$3,900.0	\$386.5	\$0.0	\$386.5
Math & Science Partnerships	\$12,705.5	\$12,000.0	\$705.5	\$1,981.9	\$1,869.2	\$112.6
National Center for Education Statistics	\$221.6	\$0.0	\$221.6	\$64.3	\$0.0	\$64.3
ONPAR	\$2,000.0	\$2,000.0	\$0.0	\$0.0	\$0.0	\$0.0
Refugee	\$0.0	\$0.0	\$0.0	\$0.0	\$0.0	\$0.0
Spanish Language Assesment-SALSA	\$886.0	\$0.0	\$886.0	\$0.0	\$0.0	\$0.0
School Health Programs	\$1,022.7	\$0.0	\$1,022.7	\$88.5	\$0.0	\$88.5
Special Congressional Initiatives	\$5,000.0	\$4,920.5	\$79.5	\$24.8	\$0.0	\$24.8
Striving Readers	\$1,500.0	\$926.4	\$573.6	\$200.9	\$165.1	\$35.8
Title I - Basic Programs	\$679,905.3	\$668,723.0	\$11,182.2	\$50,711.6	\$48,323.1	\$2,388.4
Title I - Comprehensive School Reform	\$35.5	\$0.0	\$35.5	\$0.0	\$0.0	\$0.0
Title I - Education of Migratory Children	\$4,466.8	\$4,403.8	\$63.0	\$472.7	\$467.5	\$5.2
Title I - Even Start Family Literacy Programs	\$3,224.7	\$2,995.0	\$229.7	\$830.5	\$777.3	\$53.2
Title I - Neglected and Delinquent	\$1,388.0	\$1,379.0	\$9.0	\$48.5	\$48.5	\$0.0
Title I - Reading First	\$22,022.1	\$20,000.0	\$2,022.1	\$4,752.6	\$4,589.8	\$162.8
Title I - School Improvement	\$74,640.7	\$72,499.1	\$2,141.6	\$4,189.5	\$3,920.7	\$268.7
Title II - Enhance Ed through Technology	\$20,883.7	\$20,000.0	\$883.7	\$2,047.1	\$1,974.1	\$73.0
Title II - Quality Teachers	\$138,402.6	\$135,000.0	\$3,402.6	\$14,165.3	\$13,964.7	\$200.6
Title III - English Language Acquisition	\$42,188.2	\$40,000.0	\$2,188.2	\$1,268.1	\$884.4	\$383.7
Title IV - 21st Century Schools	\$56,709.5	\$55,000.0	\$1,709.5	\$8,285.1	\$7,794.1	\$491.0
Title IV - Safe & Drug Free Schools	\$15,379.4	\$15,000.0	\$379.4	\$133.9	\$65.9	\$68.1
Title V - Innovative Programs	\$185.0	\$0.0	\$185.0	\$0.0	\$0.0	\$0.0
Title VI - Rural & Low Income Programs	\$2,050.0	\$2,000.0	\$50.0	\$6.6	\$6.6	\$0.0
Title VI - State Assessment	\$22,894.3	\$0.0	\$22,894.3	\$11,162.3	\$0.0	\$11,162.3
Title X - McKinney Homeless Assistance	\$3,930.7	\$3,500.0	\$430.7	\$652.0	\$576.2	\$75.8
Transition to Teaching	\$340.8	\$300.0	\$40.8	\$0.0	\$0.0	\$0.0
TOTAL - ALL FUNDS:	\$11,751,242.4	\$11,582,382.4	\$168,860.1	\$2,791,022.9	\$2,755,145.2	\$35,877.7

ILLINOIS STATE BOARD OF EDUCATION
Financial Status Report
July 1, 2010 through November 30, 2010
(Fiscal Year 2011)

	Appropriation Amount	Expenditures to Date	Unexpended Appropriation	Percentage spent YTD	Percentage Unexpended
<u>General Revenue Fund</u>					
Personal Services and Related Expenditures	\$ 16,745,700	\$ 7,282,231	\$ 9,463,469	43.49%	56.51%
Contractual Services	6,007,200	1,393,746	4,613,454	23.20%	76.80%
Travel	332,500	77,940	254,560	23.44%	76.56%
Commodities	75,000	20,795	54,205	27.73%	72.27%
Printing	88,500	865	87,635	0.98%	99.02%
Equipment	88,900	41,246	47,654	46.40%	53.60%
Telecommunications	375,300	107,403	267,897	28.62%	71.38%
Operation of Automotive Equipment	23,800	3,295	20,505	13.84%	86.16%
Lump Sums	812,500	206,745	605,755	25.45%	74.55%
<i>Sub-total</i>	24,549,400	9,134,266	15,415,134	37.21%	62.79%
Awards and Grants	2,385,806,700	657,189,807	1,728,616,893	27.55%	72.45%
Total General Revenue Fund	\$ 2,410,356,100	\$ 666,324,073	\$ 1,744,032,027	27.64%	72.36%
<u>Education Assistance Fund</u>					
Awards and Grants	\$ 602,439,300	\$ 365,010,862	\$ 237,428,438	60.59%	39.41%
<u>Common School Fund</u>					
Compensation for Regional Superintendents and Asst. Superintendents	\$ 9,100,000	\$ 3,562,681	\$ 5,537,319	39.15%	60.85%
General State Aid	3,997,865,800	1,293,966,726	2,703,899,074	32.37%	67.63%
Total Common School Fund	\$ 4,006,965,800	\$ 1,297,529,406	\$ 2,709,436,394	32.38%	67.62%
<u>Teacher Certification Fee Revolving Fund</u>					
Lump Sums	\$ 3,700,000	\$ 210,947	\$ 3,489,053	5.70%	94.30%

ILLINOIS STATE BOARD OF EDUCATION
Financial Status Report
July 1, 2010 through November 30, 2010
(Fiscal Year 2011)

	Appropriation Amount	Expenditures to Date	Unexpended Appropriation	Percentage spent YTD	Percentage Unexpended
<u>Drivers Education Fund</u>					
Personal Services and Related Expenditures	\$ 91,650	\$ 12,772	\$ 78,878	13.94%	86.06%
Awards and Grants	24,229,600	6,057,391	18,172,209	25.00%	75.00%
Total Drivers Education Fund	\$ 24,321,250	\$ 6,070,163	\$ 18,251,087	24.96%	75.04%
<u>School Dist. Emergency Financial Asst. Fund</u>					
Awards and Grants	\$ 1,000,000	\$ -	\$ 1,000,000	0.00%	100.00%
<u>SBE Special Purpose Trust Fund</u>					
Lump Sums	\$ 15,500,000	\$ 1,138,882	\$ 14,361,118	7.35%	92.65%
<u>SBE Teacher Certification Institution Fund</u>					
Lump Sums	\$ 2,208,900	\$ 71,665	\$ 2,137,235	3.24%	96.76%
<u>SBE Federal Department of Agriculture Fund</u>					
Personal Services and Related Expenditures	\$ 5,513,800	\$ 2,035,288	\$ 3,478,512	36.91%	63.09%
Contractual Services	4,010,000	671,521	3,338,479	16.75%	83.25%
Travel	400,000	85,440	314,560	21.36%	78.64%
Commodities	85,000	2,020	82,980	2.38%	97.62%
Printing	156,300	-	156,300	0.00%	100.00%
Equipment	150,000	20,000	130,000	13.33%	86.67%
Telecommunications	50,000	-	50,000	0.00%	100.00%
Sub-total	10,365,100	2,814,269	7,550,831	27.15%	72.85%
Awards and Grants	728,657,300	142,491,551	586,165,749	19.56%	80.44%
Total SBE Federal Department of Agriculture Fund	\$ 739,022,400	\$ 145,305,820	\$ 593,716,580	19.66%	80.34%

ILLINOIS STATE BOARD OF EDUCATION
Financial Status Report
July 1, 2010 through November 30, 2010
(Fiscal Year 2011)

	Appropriation Amount	Expenditures to Date	Unexpended Appropriation	Percentage spent YTD	Percentage Unexpended
<u>SBE Federal Agency Services Fund</u>					
Personal Services and Related Expenditures	\$ 152,000	\$ 57,339	\$ 94,661	37.72%	62.28%
Contractual Services	900,000	77,062	822,938	8.56%	91.44%
Travel	30,000	4,132	25,868	13.77%	86.23%
Commodities	20,000	-	20,000	0.00%	100.00%
Printing	700	-	700	0.00%	100.00%
Equipment	11,000	-	11,000	0.00%	100.00%
Telecommunications	9,000	-	9,000	0.00%	100.00%
<i>Sub-total</i>	<u>1,122,700</u>	<u>138,534</u>	<u>984,166</u>	<u>12.34%</u>	<u>87.66%</u>
Awards and Grants	<u>2,500,000</u>	<u>203,923</u>	<u>2,296,077</u>	<u>8.16%</u>	<u>91.84%</u>
Total SBE Federal Agency Services Fund	<u>\$ 3,622,700</u>	<u>\$ 342,457</u>	<u>\$ 3,280,243</u>	<u>9.45%</u>	<u>90.55%</u>
<u>SBE Federal Department of Education Fund</u>					
Personal Services and Related Expenditures	\$ 20,372,500	\$ 5,921,259	\$ 14,451,241	29.06%	70.94%
Contractual Services	19,400,000	2,583,505	16,816,495	13.32%	86.68%
Travel	1,600,000	184,343	1,415,657	11.52%	88.48%
Commodities	305,000	1,824	303,176	0.60%	99.40%
Printing	341,000	-	341,000	0.00%	100.00%
Equipment	455,000	24,620	430,380	5.41%	94.59%
Telecommunications	400,000	-	400,000	0.00%	100.00%
Lump Sums	23,780,300	11,162,335	12,617,965	46.94%	53.06%
<i>Sub-total</i>	<u>66,653,800</u>	<u>19,877,886</u>	<u>46,775,914</u>	<u>29.82%</u>	<u>70.18%</u>
Awards and Grants	<u>3,317,910,600</u>	<u>195,572,388</u>	<u>3,122,338,212</u>	<u>5.89%</u>	<u>94.11%</u>
Total SBE Federal Department of Education Fund	<u>\$ 3,384,564,400</u>	<u>\$ 215,450,274</u>	<u>\$ 3,169,114,126</u>	<u>6.37%</u>	<u>93.63%</u>
<u>Charter Schools Revolving Loan Program Fund</u>					
Awards and Grants	<u>\$ 20,000</u>	<u>\$ -</u>	<u>\$ 20,000</u>	<u>0.00%</u>	<u>100.00%</u>
<u>School Infrastructure Fund</u>					
Personal Services and Related Expenditures	<u>\$ 723,750</u>	<u>\$ 47,617</u>	<u>\$ 676,133</u>	<u>6.58%</u>	<u>93.42%</u>

ILLINOIS STATE BOARD OF EDUCATION
Financial Status Report
July 1, 2010 through November 30, 2010
(Fiscal Year 2011)

	Appropriation Amount	Expenditures to Date	Unexpended Appropriation	Percentage spent YTD	Percentage Unexpended
<u>School Technology Revolving Loan Program Fund</u>					
Awards and Grants	\$ 5,000,000	\$ -	\$ 5,000,000	0.00%	100.00%
<u>Temporary Relocation Expenses Revolving Grant Fund</u>					
Awards and Grants	\$ 1,400,000	\$ -	\$ 1,400,000	0.00%	100.00%
<u>Capital Development Fund</u>					
Grants for Educational Purposes	\$ 25,000,000	\$ -	\$ 25,000,000	0.00%	100.00%
<u>School Construction Fund</u>					
Construction Grants	\$ 100,000,000	\$ -	\$ 100,000,000	0.00%	100.00%
<u>Build Illinois Bond Fund</u>					
Construction Grants	\$ 10,000,000	\$ -	\$ 10,000,000	0.00%	100.00%
<u>U.S. Dept. of Education Jobs Program Federal Trust Fund</u>					
Awards and Grants	\$ 415,397,841	\$ 93,524,823	\$ 321,873,018	22.51%	77.49%
ISBE TOTALS	\$ 11,751,242,441	\$ 2,791,026,989	\$ 8,960,215,452	23.75%	76.25%

ILLINOIS STATE BOARD OF EDUCATION
Combined Financial Status Report
July 1, 2010 through November 30, 2010
(Fiscal Year 2011)

	Appropriation Amount	Expenditures to Date (Direct)	Federal Indirect Cost Recovery Expenditures	Unexpended Appropriation	Percentage spent YTD	Percentage Unexpended
All Funds						
Personal Services and Related Expenditures	\$ 44,365,066	\$ 15,356,507	\$ 765,666	\$ 28,242,893	34.61%	63.66%
Contractual Services	30,585,221	4,725,835	268,021	25,591,365	15.45%	83.67%
Travel	2,370,150	351,854	7,650	2,010,646	14.85%	84.83%
Commodities	491,245	24,639	6,245	460,361	5.02%	93.71%
Printing	586,500	865	-	585,635	0.15%	99.85%
Equipment	776,689	85,866	71,789	619,034	11.06%	79.70%
Telecommunications	849,711	107,403	15,411	726,897	12.64%	85.55%
Operation of Automotive Equipment	23,800	3,295	-	20,505	13.84%	86.16%
Lump Sums	44,866,918	11,655,792	-	33,211,126	25.98%	74.02%
Sub-total	124,915,300	33,446,837	1,134,782	91,468,463	26.78%	73.22%
Awards and Grants	11,516,327,141	2,757,580,152	-	8,758,746,989	23.94%	76.06%
Construction Grants	110,000,000	-	-	110,000,000	0.00%	100.00%
Total All Funds	\$ 11,751,242,441	\$ 2,789,892,207	\$ 1,134,782	\$ 8,960,215,452	23.74%	76.25%

General Revenue Fund

Personal Services and Related Expenditures	\$ 16,745,700	\$ 7,282,231	\$ -	\$ 9,463,469	43.49%	56.51%
Contractual Services	6,007,200	1,393,746	-	4,613,454	23.20%	76.80%
Travel	332,500	77,940	-	254,560	23.44%	76.56%
Commodities	75,000	20,795	-	54,205	27.73%	72.27%
Printing	88,500	865	-	87,635	0.98%	99.02%
Equipment	88,900	41,246	-	47,654	46.40%	53.60%
Telecommunications	375,300	107,403	-	267,897	28.62%	71.38%
Operation of Automotive Equipment	23,800	3,295	-	20,505	13.84%	86.16%
Lump Sums	812,500	206,745	-	605,755	25.45%	74.55%
Sub-total	24,549,400	9,134,266	-	15,415,134	37.21%	62.79%
Awards and Grants	2,385,806,700	657,189,807	-	1,728,616,893	27.55%	72.45%
Total General Revenue Fund	\$ 2,410,356,100	\$ 666,324,073	\$ -	\$ 1,744,032,027	27.64%	72.36%

Other State Funds

Personal Services and Related Expenditures	\$ 815,400	\$ 60,389	\$ -	\$ 755,011	7.41%	92.59%
Lump Sums	21,408,900	1,421,494	-	19,987,406	6.64%	93.36%
Sub-total	22,224,300	1,481,883	-	20,742,417	6.67%	93.33%
Awards and Grants	4,666,054,700	1,668,597,659	-	2,997,457,041	35.76%	64.24%
Construction Grants	110,000,000	-	-	110,000,000	0.00%	100.00%
Total Other State Funds	\$ 4,798,279,000	\$ 1,670,079,542	\$ -	\$ 3,128,199,458	34.81%	65.19%

Federal Funds

Personal Services and Related Expenditures	\$ 26,038,300	\$ 8,013,886	\$ -	\$ 18,024,414	30.78%	69.22%
Contractual Services	24,310,000	3,332,088	-	20,977,912	13.71%	86.29%
Travel	2,030,000	273,914	-	1,756,086	13.49%	86.51%
Commodities	410,000	3,844	-	406,156	0.94%	99.06%
Printing	498,000	-	-	498,000	0.00%	100.00%
Equipment	616,000	44,620	-	571,380	7.24%	92.76%
Telecommunications	459,000	-	-	459,000	0.00%	100.00%
Lump Sums	23,780,300	11,162,335	-	12,617,965	46.94%	53.06%
Sub-total	78,141,600	22,830,688	-	55,310,912	29.22%	70.78%
Awards and Grants	4,464,465,741	431,792,685	-	4,032,673,056	9.67%	90.33%
Total Federal Funds	\$ 4,542,607,341	\$ 454,623,374	\$ -	\$ 4,087,983,967	10.01%	89.99%

ILLINOIS STATE BOARD OF EDUCATION
Awards and Grants Expenditures
July 1, 2010 through November 30, 2010
(Fiscal Year 2011)

<u><i>General Revenue Fund</i></u>	Appropriation Amount	Expenditures to Date	Unexpended Appropriation	Percentage spent YTD	Percentage Unexpended
Advanced Placement Classes	\$ 527,000	\$ 10,988	\$ 516,012	2.09%	97.91%
Agriculture Education	1,947,600	442,911	1,504,689	22.74%	77.26%
Arts and Foreign Language	1,117,000	-	1,117,000	0.00%	100.00%
Bilingual Education	63,381,200	3,253,002	60,128,198	5.13%	94.87%
Vocational Education Career and Technical Education	38,562,100	18,241,141	20,320,959	47.30%	52.70%
Early Childhood Education	340,093,300	116,986,904	223,106,396	34.40%	65.60%
Standards, Assessments and Accountability	1,002,800	-	1,002,800	0.00%	100.00%
Technology for Success	2,175,800	780,209	1,395,591	35.86%	64.14%
ROE School Bus Driver Training	70,000	70,000	-	100.00%	0.00%
ROE and ISC Operations Reimbursement	4,271,500	1,833,755	2,437,745	42.93%	57.07%
Autism Training & Technical Assistance	100,000	-	100,000	0.00%	100.00%
Recording for Blind and Dyslexic	816,600	-	816,600	0.00%	100.00%
Children's Mental Health Partnership	1,464,000	-	1,464,000	0.00%	100.00%
Educational Materials Unit	1,421,100	580,000	841,100	40.81%	59.19%
Philip Rock Center Reimbursement	3,577,800	1,300,000	2,277,800	36.34%	63.66%
Alternative Education	9,341,900	2,233,738	7,108,162	23.91%	76.09%
Re-enrollment Student Program	3,600,000	-	3,600,000	0.00%	100.00%
Truant Alternative/Optional Education	14,059,000	4,193,937	9,865,063	29.83%	70.17%
National Board Certification Reimbursement	2,756,400	-	2,756,400	0.00%	100.00%
Teach America	225,000	-	225,000	0.00%	100.00%
Teachers and Administrators Mentoring	5,628,000	498,397	5,129,603	8.86%	91.14%
Reorganization Incentive	3,400,000	3,228,635	171,365	94.96%	5.04%
Reorganization Incentive Feasibility Study	300,000	-	300,000	0.00%	100.00%
Response to Intervention	972,000	-	972,000	0.00%	100.00%
Special Education-Private Tuition	181,100,000	110,874,778	70,225,222	61.22%	38.78%
Special Education-Extraordinary	334,236,800	59,159,925	275,076,875	17.70%	82.30%
Special Education-Personnel	459,600,000	132,059,769	327,540,231	28.73%	71.27%
Special Education-Orphanage Tuition	120,200,000	46,360,112	73,839,888	38.57%	61.43%
Transportation-Regular/Vocational	270,009,700	57,248,976	212,760,724	21.20%	78.80%
Transportation-Special Education	429,700,000	70,235,652	359,464,348	16.35%	83.65%
Free Lunch/Breakfast	26,300,000	16,145,138	10,154,862	61.39%	38.61%
Orphanage Tuition	13,000,000	2,952,827	10,047,173	22.71%	77.29%
Special Education-Summer School	11,700,000	6,364,800	5,335,200	54.40%	45.60%
Tax Equivalent Grants	222,600	222,600	-	100.00%	0.00%
After School Matters	4,000,000	-	4,000,000	0.00%	100.00%
Total General Revenue Fund	\$ 2,350,879,200	\$ 655,278,193	\$ 1,695,601,007	27.87%	72.13%

ILLINOIS STATE BOARD OF EDUCATION
Awards and Grants Expenditures
July 1, 2010 through November 30, 2010
(Fiscal Year 2011)

	Appropriation Amount	Expenditures to Date	Unexpended Appropriation	Percentage spent YTD	Percentage Unexpended
<u>Education Assistance Fund</u>					
General State Aid	\$ 602,439,300	\$ 365,010,862	\$ 237,428,438	60.59%	39.41%
Total Education Assistance Fund	\$ 602,439,300	\$ 365,010,862	\$ 237,428,438	60.59%	39.41%
<u>Common School Fund</u>					
Compensation for Regional Superintendents and Asst. Superintendents	\$ 9,100,000	\$ 3,562,681	\$ 5,537,319	39.15%	60.85%
General State Aid	3,997,865,800	1,293,966,726	2,703,899,074	32.37%	67.63%
Total Common School Fund	\$ 4,006,965,800	\$ 1,297,529,406	\$ 2,709,436,394	32.38%	67.62%
<u>Drivers Education Fund</u>					
Driver Education Grants	\$ 24,229,600	\$ 6,057,391	\$ 18,172,209	25.00%	75.00%
Total Drivers Education Fund	\$ 24,229,600.0	\$ 6,057,391	\$ 18,172,208.9	25.00%	75.00%
<u>School Dist. Emergency Financial Asst. Fund</u>					
School District Emergency Financial Assistance	\$ 1,000,000	\$ -	\$ 1,000,000	0.00%	100.00%
Total School Dist. Emergency Fin. Asst. Fund	\$ 1,000,000	\$ -	\$ 1,000,000	0.00%	100.00%
<u>SBE Federal Department of Agriculture Fund</u>					
Federal Nutrition Programs	\$ 725,000,000	\$ 142,491,551	\$ 582,508,449	19.65%	80.35%
ARRA	3,657,300	-	3,657,300	0.00%	100.00%
Total SBE Federal Department of Agriculture Fund	\$ 728,657,300	\$ 142,491,551	\$ 586,165,749	19.56%	80.44%
<u>SBE Federal Agency Services Fund</u>					
Learn and Serve America	\$ 2,500,000	\$ 203,923	\$ 2,296,077	8.16%	91.84%
Total SBE Federal Agency Services Fund	\$ 2,500,000	\$ 203,923	\$ 2,296,077	8.16%	91.84%

ILLINOIS STATE BOARD OF EDUCATION
Awards and Grants Expenditures
July 1, 2010 through November 30, 2010
(Fiscal Year 2011)

	Appropriation Amount	Expenditures to Date	Unexpended Appropriation	Percentage spent YTD	Percentage Unexpended
<u>SBE Federal Department of Education Fund</u>					
Title VI Rural and Low Income Students	\$ 2,000,000	\$ 6,555	\$ 1,993,445	0.33%	99.67%
Title III - English Language Acquisition	40,000,000	884,418	39,115,582	2.21%	97.79%
ONPAR	2,000,000	-	2,000,000	0.00%	100.00%
Enhancing Education Through Technology	20,000,000	1,974,134	18,025,866	9.87%	90.13%
Charter Schools	9,000,000	703,367	8,296,633	7.82%	92.18%
Advanced Placement Fee	2,000,000	1,307,992	692,008	65.40%	34.60%
Title I - Basic	750,000,000	53,537,150	696,462,850	7.14%	92.86%
Title I - Reading First	20,000,000	4,589,800	15,410,200	22.95%	77.05%
Title IV - Safe & Drug Free Schools	15,000,000	65,858	14,934,142	0.44%	99.56%
Title IV - 21st Century/Community Service	55,000,000	7,794,107	47,205,893	14.17%	85.83%
Title II - Teacher Quality	135,000,000	13,964,708	121,035,292	10.34%	89.66%
Title II - Transition to Teaching	300,000	-	300,000	0.00%	100.00%
Title II - Math/Science Partnerships	12,000,000	1,869,216	10,130,784	15.58%	84.42%
Title X - McKinney Homeless	3,500,000	576,183	2,923,817	16.46%	83.54%
Longitudinal Data Systems	3,900,000	386,485	3,513,515	9.91%	90.09%
IDEA - Preschool	25,000,000	3,482,729	21,517,271	13.93%	86.07%
IDEA - Improvement	3,200,000	187,190	3,012,810	5.85%	94.15%
IDEA	650,000,000	54,729,215	595,270,785	8.42%	91.58%
IDEA - Model Outreach	400,000	-	400,000	0.00%	100.00%
IDEA - Deaf/Blind	450,000	91,444	358,556	20.32%	79.68%
Career and Technical Education - Basic Perkins	55,000,000	11,806,963	43,193,037	21.47%	78.53%
Career and Technical Education - Tech Prep	5,000,000	479,086	4,520,914	9.58%	90.42%
Special Federal Congressional Initiatives	4,920,463	-	4,920,463	0.00%	100.00%
Striving Readers	926,400	165,138	761,262	17.83%	82.17%
Title I ARRA	544,464,500	2,441,517	542,022,983	0.45%	99.55%
IDEA ARRA	506,479,800	31,746,019	474,733,781	6.27%	93.73%
IDEA Preschool ARRA	18,311,500	604,540	17,706,960	3.30%	96.70%
Enhancing Education Through Technology-ARRA	26,196,077	2,040,036	24,156,041	7.79%	92.21%
Title X-Homeless Education ARRA	2,581,600	1,654	2,579,946	0.06%	99.94%
Longitudinal Data System-ARRA	4,300,000	8,513	4,291,488	0.20%	99.80%
Race to the Top	400,000,000	-	400,000,000	0.00%	100.00%
Total SBE Federal Department of Education Fund	\$ 3,316,930,340	\$ 195,444,017	\$ 3,121,486,323	5.89%	94.11%
<u>Charter Schools Revolving Loan Program Fund</u>					
Charter Schools Revolving Loans	\$ 20,000	\$ -	\$ 20,000	0.00%	100.00%
Total Charter Schools Rev. Loan Program Fund	\$ 20,000	\$ -	\$ 20,000	0.00%	100.00%

ILLINOIS STATE BOARD OF EDUCATION
Awards and Grants Expenditures
July 1, 2010 through November 30, 2010
(Fiscal Year 2011)

	Appropriation Amount	Expenditures to Date	Unexpended Appropriation	Percentage spent YTD	Percentage Unexpended
<u>School Technology Revolving Loan Program Fund</u>					
School Technology Revolving Loans	\$ 5,000,000	\$ -	\$ 5,000,000	0.00%	100.00%
Total School Technology Rev. Loan Program Fund	\$ 5,000,000	\$ -	\$ 5,000,000	0.00%	100.00%
<u>Temporary Relocation Expenses Revolving Grant Fund</u>					
Temporary Relocation Revolving Loans/Grants	\$ 1,400,000	\$ -	\$ 1,400,000	0.00%	100.00%
Total Temporary Relocation Exp. Rev. Grant Fund	\$ 1,400,000	\$ -	\$ 1,400,000	0.00%	100.00%
<u>Capital Development Fund</u>					
Grants for Educational Purposes	\$ 25,000,000	\$ -	\$ 25,000,000	0.00%	100.00%
Total Capital Development Fund	\$ 25,000,000	\$ -	\$ 25,000,000	0.00%	100.00%
<u>School Construction Fund</u>					
Construction Grants	\$ 100,000,000	\$ -	\$ 100,000,000	0.00%	100.00%
Total School Construction Fund	\$ 100,000,000	\$ -	\$ 100,000,000	0.00%	100.00%
<u>Build Illinois Bond Fund</u>					
Construction Grants	\$ 10,000,000	\$ -	\$ 10,000,000	0.00%	100.00%
Total Build Illinois Bond Fund	\$ 10,000,000	\$ -	\$ 10,000,000	0.00%	100.00%
<u>U.S. Dept. of Education Jobs Program Federal Trust Fund</u>					
Awards and Grants	\$ 415,397,841	\$ 93,524,823	\$ 321,873,018	22.51%	77.49%
Total U.S. Dept. of Education Jobs Program Fed. Trust Fund	\$ 415,397,841	\$ 93,524,823	\$ 321,873,018	22.51%	77.49%
TOTAL AWARDS AND GRANTS - ALL FUNDS	\$ 11,590,419,381	\$ 2,755,540,167	\$ 8,834,879,214	23.77%	76.23%

ILLINOIS STATE BOARD OF EDUCATION
Comparative Statement of Expenditures to Date (November 30)
Fiscal Years 2011 and 2010

	FY11				FY10			
	Appropriation Amount	Expenditures to Date (Direct)	Federal Indirect Cost Recovery Expenditures	Percentage to Date	Appropriation Amount	Expenditures to Date (Direct)	Federal Indirect Cost Recovery Expenditures	Percentage to Date
All Funds								
Personal Services and Related Expenditures	\$ 44,365,066	\$ 15,356,507	\$ 765,666	36.34%	\$ 44,482,578	\$ 15,693,041	\$ 735,578	35.28%
Contractual Services	30,585,221	4,725,835	268,021	16.33%	28,165,671	4,455,488	98,471	15.82%
Travel	2,370,150	351,854	7,650	15.17%	2,392,788	417,172	12,788	17.43%
Commodities	491,245	24,639	6,245	6.29%	485,000	37,597	-	7.75%
Printing	586,500	865	-	0.15%	591,200	10,055	-	1.70%
Equipment	776,689	85,866	71,789	20.30%	837,057	106,004	67,157	12.66%
Telecommunications	849,711	107,403	15,411	14.45%	979,229	118,556	34,129	12.11%
Operation of Automotive Equipment	23,800	3,295	-	13.84%	25,000	3,322	-	13.29%
Lump Sums	44,866,918	11,655,792	-	25.98%	225,213,577	58,275,504	-	25.88%
Sub-total	124,915,300	32,312,055	1,134,782	26.78%	303,172,100	79,116,739	948,123	26.10%
Awards and Grants	11,516,327,141	2,757,580,152	-	23.94%	10,447,962,120	3,031,985,887	-	29.02%
Construction Grants	110,000,000	-	-	0.00%	-	-	-	0.00%
Total All Funds	\$ 11,751,242,441	\$ 2,789,892,207	\$ 1,134,782	23.75%	\$ 10,751,134,220	\$ 3,111,102,626	\$ 948,123	28.94%
General Revenue Fund								
Personal Services and Related Expenditures	\$ 16,745,700	\$ 7,282,231	\$ -	43.49%	\$ 18,609,100	\$ 7,413,215	\$ -	39.84%
Contractual Services	6,007,200	1,393,746	-	23.20%	6,757,200	1,345,014	-	19.90%
Travel	332,500	77,940	-	23.44%	350,000	89,374	-	25.54%
Commodities	75,000	20,795	-	27.73%	75,000	26,760	-	35.68%
Printing	88,500	865	-	0.98%	93,200	308	-	0.33%
Equipment	88,900	41,246	-	46.40%	153,900	57,768	-	37.54%
Telecommunications	375,300	107,403	-	28.62%	486,100	118,556	-	24.39%
Operation of Automotive Equipment	23,800	3,295	-	13.84%	25,000	3,322	-	13.29%
Lump Sums	812,500	206,745	-	25.45%	184,272,500	53,387,639	-	28.97%
Sub-total	24,549,400	9,134,266	-	37.21%	210,822,000	62,441,956	-	29.62%
Awards and Grants	2,385,806,700	657,189,807	-	27.55%	3,268,694,683	944,192,259	-	28.89%
Total General Revenue Fund	\$ 2,410,356,100	\$ 666,324,073	\$ -	27.64%	\$ 3,479,516,683	\$ 1,006,634,215	\$ -	28.93%
Other State Funds								
Personal Services and Related Expenditures	\$ 815,400	\$ 60,389	\$ -	7.41%	\$ 209,100	\$ 76,050	\$ -	36.37%
Lump Sums	21,408,900	1,421,494	-	6.64%	18,108,900	1,315,616	-	7.27%
Sub-total	22,224,300	1,481,883	-	6.67%	18,318,000	1,391,666	-	7.60%
Awards and Grants	4,666,054,700	1,668,597,659	-	35.76%	3,850,549,600	1,498,340,642	-	38.91%
Construction Grants	110,000,000	-	-	0.00%	148,518,304	-	-	0.00%
Total Other State Funds	\$ 4,798,279,000	\$ 1,670,079,542	\$ -	34.81%	\$ 4,017,385,904	\$ 1,499,732,308	\$ -	37.33%
Federal Funds								
Personal Services and Related Expenditures	\$ 26,038,300	\$ 8,013,886	\$ -	30.78%	\$ 24,928,800	\$ 8,203,776	\$ -	32.91%
Contractual Services	24,310,000	3,332,088	-	13.71%	21,310,000	3,110,474	-	14.60%
Travel	2,030,000	273,914	-	13.49%	2,030,000	327,798	-	16.15%
Commodities	410,000	3,844	-	0.94%	410,000	10,837	-	2.64%
Printing	498,000	-	-	0.00%	498,000	9,747	-	1.96%
Equipment	616,000	44,620	-	7.24%	616,000	48,236	-	7.83%
Telecommunications	459,000	-	-	0.00%	459,000	-	-	0.00%
Lump Sums	23,780,300	11,162,335	-	46.94%	23,780,300	4,520,372	-	19.01%
Sub-total	78,141,600	22,830,688	-	29.22%	74,032,100	16,231,240	-	21.92%
Awards and Grants	4,464,465,741	431,792,685	-	9.67%	3,328,717,837	589,452,986	-	17.71%
Total Federal Funds	\$ 4,542,607,341	\$ 454,623,374	\$ -	10.01%	\$ 3,402,749,937	\$ 605,684,226	\$ -	17.80%

**ILLINOIS STATE BOARD OF EDUCATION
FINANCIAL STATUS REPORT - 07/01/2010 THROUGH 11/30/2010
FY2011**

	<u>Funded Amount</u>	<u>Expended Year to Date</u>	<u>% Spent Year to Date</u>	<u>September Expenditures</u>	<u>Description</u>
Personal Services and Related	50,005.2	16,692.3	33.4%	3,345.5	Salaries & Benefits
Contractual Services	112,770.6	18,442.4	16.4%	3,298.2	Agency Contracts (see below); Non-Employee Travel; Conferences; Registration Fees
Travel	2,542.2	378.5	14.9%	85.5	Staff Travel
Commodities	743.7	33.9	4.6%	5.3	Supplies; Books
Printing	787.3	1.0	0.1%	0.4	Agency Printing
Equipment	957.4	206.4	21.6%	2.2	Computers; Printers; Furniture
Telecommunications	1,136.6	124.2	10.9%	28.8	Telecommunications Expenses
Auto Operations	23.8	3.3	13.9%	1.5	Operation of Agency Autos
Prompt Payment Act	0.5	0.0	0.0%	0.0	Prompt Payment
Refunds	0.0	0.0	0.0%	0.0	Refunds
Temp. Relocation Revolving Fund	0.0	0.0	0.0%	0.0	Interfund Cash Transfer
Grants	11,031,821.5	2,661,620.3	24.1%	624,521.4	See Detail Below
School Construction Grants	135,000.0	0.0	0.0%	0.0	School Construction Funds

	<u>Funded Amount</u>	<u>Expended Year to Date</u>	<u>% Spent Year to Date</u>	<u>November Expenditures</u>	<u>Description</u>
Agency Contracts Breakdown:					
<u>State Superintendent</u>					
John Perkins					School District Liaison
GRF	79.0	21.3	27.0%	3.5	Provide oversight and coordination for on-going and emerging board priorities, advise Superintendent on agency wide matters and perform other tasks and duties as assigned by the State Superintendent
University of Illinois					
GRF	142.4	23.4	16.4%	0.0	Technical assistance and technical support services for the Gates Foundation to align IL Learning Standards and Assessments with college work readiness standards
Illinois State University					
GRF	370.0	260.0	70.3%	90.0	

	<u>Funded Amount</u>	<u>Expended Year to Date</u>	<u>% Spent Year to Date</u>	<u>September Expenditures</u>	<u>Description</u>
Federal	290.0	0.0	0.0%	0.0	
<u>Human Resources</u>					
K & L Gates LLP (formerly Bell, Boyd and Lloyd)					Arbitration matters
GRF	75.0	16.6	22.1%	0.0	
Other State	75.0	0.0	0.0%	0.0	
<u>Administrative Services</u>					
Alzina					Building lease in Springfield
GRF	1,625.2	490.9	30.2%	0.0	
Other State	245.2	3.7	1.5%	0.0	
Federal	881.1	881.1	100.0%	0.0	
Xerox Corp					Copier Maintenance Repairs
GRF	92.5	13.1	14.2%	-4.2	
Other State	92.5	16.8	18.2%	9.4	
Facilities Management					
GRF	104.6	47.4	45.3%	23.7	Rent for Chicago Office, Thompson Center
Other State	5.0	0.0	0.0%	0.0	
Federal	174.7	0.0	0.0%	0.0	
<u>General Counsel/Legal</u>					
31 Impartial Hearing Officers					Teacher Dismissal Hearing Officers
GRF	127.0	15.0	11.8%	0.0	
Franczek, Sullivan PC					Attorney General's Office appointed Res Vazquez to continue as Legal Counsel for the ongoing implementation and monitoring of the Corey H. consent decree
GRF	120.0	41.9	34.9%	0.0	
Shefsky & Froelich LTD					Prosecution of Educator misconduct cases and any other cases ISBE may request
GRF	250.0	41.5	16.6%	20.5	
Holland & Knight, LLB					American Recovery Reinvestment Act Technical & Legal Assistance
GRF	50.0	20.2	40.4%	0.0	
DeBlasio Law Group					Litigation for recovery of grant funds
GRF	90.0	73.8	82.0%	3.6	
Other State	62.8	62.7	99.8%	0.0	
<u>Data Systems</u>					
IBM					Development of Statewide Student Information System
GRF	675.0	120.0	17.8%	0.0	
Federal	1,005.0	520.0	51.7%	130.0	
Utilistar					Data analysis and reporting for Supplemental Education Services
Federal	60.0	0.0	0.0%	0.0	
Ashbaugh & Associates					Project Leader for Child Nutrition System - MY08211

	<u>Funded Amount</u>	<u>Expended Year to Date</u>	<u>% Spent Year to Date</u>	<u>September Expenditures</u>	<u>Description</u>
Federal	185.3	58.1	31.4%	14.7	
Capitol Strategies					Programmer for Child Nutrition/ ACES - MY07211
Federal	154.4	56.9	36.9%	11.2	
Capitol Strategies					Programmer for Entity System - MY07212
GRF	153.4	55.8	36.4%	17.3	
Capitol Strategies					Two Programmers for Child Nutrition System - MY08212
Federal	312.7	105.9	33.9%	30.8	
Ashbaugh & Associates					Programmer for Teacher Certification Information System and Educator Certification System MY09212
Other State	156.4	48.7	31.1%	11.7	
Hupp Information Technologies					Programmer for support of EDFacts/EDEN
Federal	70.9	24.8	35.0%	6.0	
LEAD IT Corporation					Programmer for Attendance & Cost Allocation System - MY10211
GRF	59.8	40.2	67.2%	9.6	(The company name changed - it was formerly Moon Technology Systems)
Other State	13.0	0.0	0.0%	0.0	
Federal	46.7	0.0	0.0%	0.0	
IO Datasphere Inc.					Programmer for Attendance and Cost Allocation System - MY10212
GRF	71.7	50.5	70.4%	11.9	
Other State	15.8	0.0	0.0%	0.0	
Federal	55.9	0.0	0.0%	0.0	
Ashbaugh & Associates					Two programmers for the Special Education Data System - MY11214
Federal	288.8	34.0	11.8%	34.0	
Ashbaugh & Associates					Two programmers for Child Nutrition (CNS), Claim Entry System (ACES) and LAN based Child Nutrition System - MY11211
Federal	316.7	74.6	23.6%	24.5	
LEAD IT Corporation					One programmer for Child Nutrition (CNS), Claim Entry System (ACES) and LAN based Child Nutrition System - MY11212
Federal	119.5	14.4	12.1%	8.6	
Marucco Stoddard, Ferenbach & Walsh (MSF&W)					One lead programmer for Child Nutrition (CNS), Claim Entry System (ACES) and LAN based Child Nutrition System - MY11213
Federal	158.4	23.0	14.5%	11.7	
<u>Technology Support</u>					
Dell Marketing LP					CMS master lease agreement - Third year of a five-year installment purchase agreement for a Storage Area Network, server products and components
GRF	132.4	132.4	100.0%	0.0	
Other State	114.0	114.0	100.0%	0.0	
Federal	76.8	76.8	100.0%	0.0	
<u>Curriculum & Instruction</u>					
IL Caucus for Adolescent Health					HIV Prevention Education Training
Federal	60.0	26.4	44.0%	26.4	
EvalSolutions, Inc.					Evaluation and Research of Illinois Math & Science Partnerships Program
Federal	111.7	0.0	0.0%	0.0	
Sangamon County ROE					Staff support for Illinois Mathematics and Science Partnership Program and Enhancing Education Through Technology as well as other statewide initiatives
Federal	212.7	53.2	25.0%	0.0	
Peoria County ROE					Administer, plan and implement the IL Virtual School (IVS) Program

	<u>Funded Amount</u>	<u>Expended Year to Date</u>	<u>% Spent Year to Date</u>	<u>September Expenditures</u>	<u>Description</u>
GRF	1,160.0	570.0	49.1%	119.2	
Federal	120.0	120.0	100.0%	100.8	
Northern Illinois University					A "live data" website for an Illinois Interactive Report Card
GRF	537.1	248.9	46.3%	0.0	
Federal	458.7	0.0	0.0%	0.0	
The Center: Resources for Teaching					Technical assistance and professional development for the Learn and Serve - K - 12
Federal	111.0	37.0	33.3%	9.3	
The Center: Resources for Teaching					Technical assistance with the McKinney-Vento Homeless Education Program
Federal	175.0	17.5	10.0%	17.5	
EvalSolutions, Inc.					External evaluator for the Enhancing Education Through Technology (EETT) program
Federal	237.1	59.3	25.0%	59.3	
Children's Memorial Hospital					Administration of the Youth Risk Behavior Survey which monitors health risk behaviors that contribute to violence, tobacco, drug alcohol, sexual, dietary behaviors and physical activity
Federal	80.0	0.0	0.0%	0.0	
DuPage County ROE					Administration of the Reading First Program
Federal	115.0	97.8	85.0%	0.0	
RMC Research Group					Evaluation for Illinois Striving Readers Program
Other State	149.9	33.3	22.2%	0.0	
Federal	50.0	0.0	0.0%	0.0	
<u>Early Childhood</u>					
Hupp Information Technologies					Programmer for Early Childhood Block Grant Program
GRF	79.0	21.9	27.7%	5.3	
Rock Island County ROE					Third party monitoring of Early Childhood Block Grant Programs
GRF	793.0	140.0	17.7%	140.0	
Erikson Institute					Early Childhood Evaluation
GRF	300.0	150.0	50.0%	150.0	
<u>English Language Learning</u>					
Illinois Migrant Council					Support & technical assistance to the Migrant Education Program
Federal	491.0	158.8	32.3%	0.0	
<u>Special Education Services</u>					
11 Hearing Officers					Impartial Hearing Officers in the local-level - Section 14-8.02 of the School Code
Federal	297.0	128.6	43.3%	22.4	
9 Mediation Officers					Special Education mediation services
Federal	90.0	23.2	25.8%	7.0	
Joyce Eckrem					Training and on-going staff development for Due Process Hearing Officers
Federal	135.0	41.7	30.9%	10.4	
Hupp Information Technology					Customize the Special Ed Data Systems and add critical indicators for the mediation process
Federal	140.4	36.5	26.0%	4.7	
ROE # 20					Harrisburg Project - Manage software for special education districts and co-ops
Federal	745.7	350.4	47.0%	56.5	
3 Corey H. CPS Monitors					Corey H. Settlement - Chicago Public Schools Monitors
Federal	60.0	11.5	19.2%	4.3	
Gail Imobersteg					Evaluation of Special Education Impartial Hearing Officers

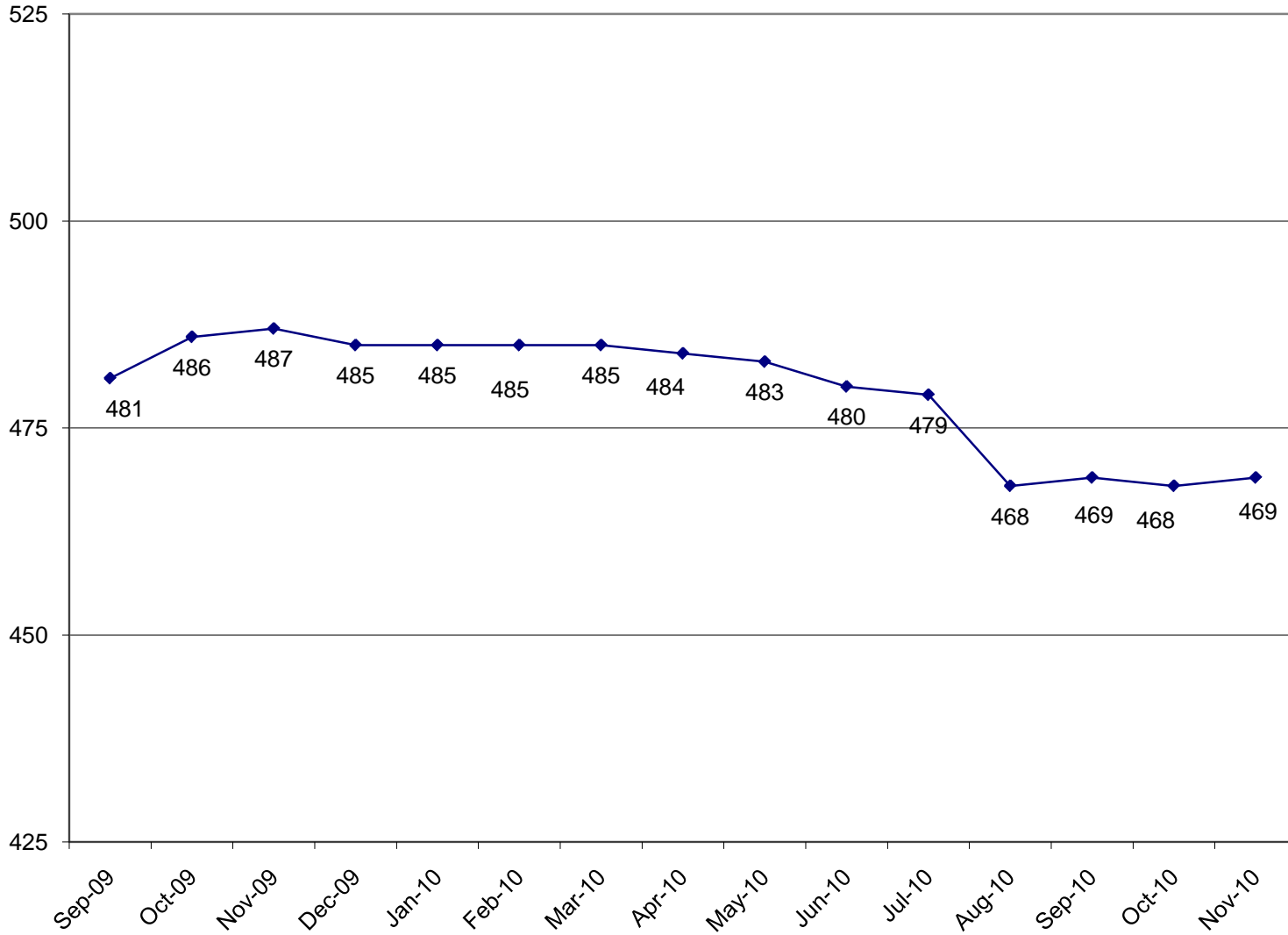
	<u>Funded Amount</u>	<u>Expended Year to Date</u>	<u>% Spent Year to Date</u>	<u>September Expenditures</u>	<u>Description</u>
Federal Measurement Inc.	50.0	9.2	18.4%	9.2	Administration of parent surveys for the percentage of parents with children receiving special education services who report that schools facilitated parent involvement which improved services for kids with disabilities
Federal Loyola University	61.0	0.0	0.0%	0.0	Assist in implementation of evaluation of special education programs
GRF Alert IT Services	156.0	39.0	25.0%	0.0	ARRA - Job S020 - Special Education Maintenance of Effort
Federal	78.0	23.7	30.4%	5.1	
<u>Grants & Programs</u>					
Northern Illinois University Federal	165.0	3.7	2.2%	0.0	Comprehensive external evaluation of the 21st Century Program
Learning Point Associates Federal	500.0	166.7	33.3%	41.7	Statewide technical assistance and monitoring for the 21st Century Program
Academic Development, Inc.					Technical assistance to schools/districts in developing evaluations for the content and effectiveness of the parental involvement policy activities and programs for improving the academic quality of schools through the spread of internet technology
Federal Sangamon County ROE	100.7	25.2	25.0%	0.5	Provide services in the review, amendment and approval process of NCLB applications and ARRA Title I applications
Federal University of Memphis	140.0	41.4	29.6%	12.3	Evaluation of the effectiveness of providers for Supplemental Education Services
Federal	125.3	31.3	25.0%	0.0	
<u>Assessment</u>					
NCS Pearson (Harcourt) GRF	2,986.7	3.5	0.1%	0.0	Development of the Illinois Standards Achievement Test- MY05647
Federal	2,873.1	2,393.6	83.3%	479.4	
University of Illinois GRF	250.0	62.5	25.0%	62.5	Evaluation of the large scale assessment and accountability system
NCS Pearson, Inc. Federal	2,585.8	1,221.7	47.2%	194.9	IAA Test Development (MY066410)
Wisconsin University - WIDA Consortium GRF	4,987.3	0.0	0.0%	0.0	Title III Requirements for the ACCESS test (English Language Learning). Validated through comparative studies
NCS Pearson, Inc. GRF	5,998.0	0.0	0.0%	0.0	Administration of the IL Standards Achievement Test MY07645
Federal	8,463.2	7,431.2	87.8%	1,032.1	

	<u>Funded Amount</u>	<u>Expended Year to Date</u>	<u>% Spent Year to Date</u>	<u>September Expenditures</u>	<u>Description</u>
American College Testing					Administration of the Prairie State Achievement Exam (PSAE)
GRF	13,613.4	0.0	0.0%	0.0	
Federal	1,538.5	0.0	0.0%	0.0	
Harte-Hanks					Third Party Oversight of all Illinois' Assessments (emergency agreement) Contract ended September 30, 2010.
Federal	70.0	52.8	75.4%	0.0	
Harte-Hanks					Third Party Oversight of Illinois' Assessments
Federal	189.6	50.5	26.6%	50.5	
<u>Educator and School Development</u>					
8 Hearing Officers					Certification Revocation Hearing Officers
Other State	226.4	5.0	2.2%	0.0	
Illinois State University					Coordinate work to support of the National Board of Professional Teaching Standards to serve schools
Federal	396.5	0.0	0.0%	0.0	
University of Illinois					Facilitate with ISBE and New Illinois Teacher Collaborative a pilot for the Induction and Mentoring Program
Other State	103.6	0.0	0.0%	0.0	
Federal	576.0	0.0	0.0%	0.0	
DuPage County ROE					Provide services for review of applications for the Private Business and Vocational Schools
GRF	50.0	0.0	0.0%	0.0	
University of Memphis					Evaluation of Charter Schools Program
Federal	69.9	0.0	0.0%	0.0	
Illinois Principals Association					New Principals Mentoring Program
Other State	830.8	0.0	0.0%	0.0	
<u>Standards and Assessments</u>					
Ashbaugh & Associates, Inc.					Provide programmer for the Illinois Longitudinal Data System
Federal	185.9	59.1	31.8%	7.6	
IL Board of Higher Education					Integrate infrastructure and data systems of IBHE and ISBE for IL Longitudinal Data System
Federal	147.0	37.4	25.4%	0.0	
Public Consulting Group					IL Longitudinal Data System Data Architecture
Federal	600.0	200.0	33.3%	50.0	
<u>Fiscal and Procurement</u>					
Workforce Services (Jill Bishop)					Translation of documents from English to other languages
Federal	73.5	0.3	0.4%	0.0	
<u>Funding & Disbursements</u>					
MTW Solutions, LLC					Technical Support for e-Grants System
Federal	60.0	0.0	0.0%	0.0	

	<u>Funded Amount</u>	<u>Expended Year to Date</u>	<u>% Spent Year to Date</u>	<u>September Expenditures</u>	<u>Description</u>
<u>Nutrition Programs</u>					
Southern Illinois University Federal	250.0	12.5	5.0%	0.0	Evaluation and reviews for School Meals Initiative (SMI)
Legal Resolve, Inc. Federal	125.0	14.7	11.8%	2.0	Administrative Hearing Officer for Child Care Food Program
Department of Public Health Federal	135.0	67.0	49.6%	67.0	Conduct the summer food sanitation inspections
<u>External Assurance</u>					
BKD LLP GRF	315.8	36.7	11.6%	10.4	ARRA/General State Aid Audit
Clifton Gunderson & Co GRF	51.1	0.0	0.0%	0.0	ARRA/General State Aid Audit
Crowe Horwath LLP GRF	249.1	40.8	16.4%	2.3	ARRA/General State Aid Audit
Grants Breakdown:					
General State Aid	4,600,305.1	1,658,977.6	36.1%	415,247.4	Formula
Title I - Low Income	750,000.0	53,537.2	7.1%	24,170.1	Formula
Child Nutrition	725,000.0	142,491.6	19.7%	59,541.7	Formula - Reimbursement
IDEA	650,000.0	54,729.2	8.4%	24,302.2	Formula
Title I - Low Income - ARRA	544,464.5	2,441.5	0.4%	429.3	Formula - Federal Stimulus
IDEA - Flow Through ARRA	506,479.8	31,746.0	6.3%	8,475.5	Formula - Federal Stimulus
Spec Ed Personnel	459,600.0	132,059.8	28.7%	39,537.8	Formula
Transportation Spec Ed	429,700.0	70,235.7	16.3%	0.0	Formula
Early Childhood Block	340,393.3	116,986.9	34.4%	26,175.2	Block grant for Pre-K, parent training and prevention initiative
Spec Ed Extraordinary	334,236.8	59,159.9	17.7%	0.0	Mandated Categorical-Supplemental
Transportation Reg/Voc	270,009.7	57,249.0	21.2%	0.0	Formula
Spec Ed Private Facility Tuition	181,100.0	110,874.8	61.2%	142.3	Formula
Title II - Teacher Quality	135,000.0	13,964.7	10.3%	5,359.3	Formula
Spec Ed Orphanage	120,200.0	46,360.1	38.6%	0.0	Formula
Reading Imp. Block Grant	68,525.7	0.0	0.0%	0.0	Formula
Bilingual Education	63,381.2	3,253.0	5.1%	3,253.0	Mandated Categorical
Title IV - 21st Century	55,000.0	7,794.1	14.2%	5,035.2	Competitive
Voc Ed - Federal	55,000.0	11,807.0	21.5%	2,202.2	Formula and Competitive - to improve student academic and career skills
Title III - English Language Acq	40,000.0	884.4	2.2%	459.6	Grant
Vocational Education - State	38,562.1	18,241.1	47.3%	4,093.8	Formula
State Free Lunch and Breakfast	26,300.0	16,145.1	61.4%	1,235.1	Mandated Categorical - Reimbursement
Technology Literacy - ARRA	26,196.1	2,040.0	7.8%	210.7	Competitive - federal Stimulus
Capital Development Fund	25,000.0	0.0	0.0%	0.0	Grants to School Districts
Preschool - Spec Ed	25,000.0	3,482.7	13.9%	412.6	Formula - special education, 3-5 year-olds
Driver Education	24,229.6	6,057.4	25.0%	0.0	Reimbursement
Technology Literacy	20,000.0	1,974.1	9.9%	138.0	Competitive and non-competitive grants to school districts
Title I - Reading First	20,000.0	4,589.8	22.9%	22.8	Competitive and formula grants

	<u>Funded Amount</u>	<u>Expended Year to Date</u>	<u>% Spent Year to Date</u>	<u>September Expenditures</u>	<u>Description</u>
Preschool - Spec Ed - ARRA	18,311.5	604.5	3.3%	264.2	Formula - Federal Stimulus
Title IV - Safe and Drug Free	15,000.0	65.9	0.4%	16.0	Formula
Truant/Dropout/Optional Education	14,059.0	4,193.9	29.8%	294.3	Competitive - at-risk students/dropout prevention
Orphanage Tuition	13,000.0	2,952.8	22.7%	0.0	Reimbursement to school districts for children residing in orphanages
Title II Math/Science Partnerships	12,000.0	1,869.2	15.6%	403.9	Formula
Spec Ed Summer School	11,700.0	6,364.8	54.4%	0.0	Formula - Special ed students enrolled in summer sessions
Alternative Ed/Reg Safe Schools	9,341.9	2,233.7	23.9%	687.8	Formula
ROE Salaries	9,100.0	3,562.7	39.2%	717.4	Salaries for ROE's
Charter Schools - Federal	9,000.0	703.4	7.8%	177.0	Competitive
Teachers/Admin. Mentoring	5,628.0	498.4	8.9%	0.0	Grants
Congressional Earmarks	5,000.0	0.0	0.0%	0.0	Grants
School Tech. Rev. Loan	5,000.0	0.0	0.0%	0.0	Loans to schools to implement technology
Voc Ed - Federal Tech Prep	5,000.0	479.1	9.6%	267.6	Grants - assists students in achieving learning/occupational skills standards
Spec. Congressional Initiatives	4,920.5	0.0	0.0%	0.0	Grants
ROE School Services	4,271.5	1,833.8	42.9%	336.0	Formula - ROE Operations
After School Matters	4,000.0	0.0	0.0%	0.0	Grant to After School Matters
Child Nutrition - ARRA	3,657.3	0.0	0.0%	0.0	Formula - Federal Stimulus
Re-Enrolling Student Program	3,600.0	0.0	0.0%	0.0	Grant to Alternative Schools Network
Philip Rock Center	3,577.8	1,300.0	36.3%	300.0	Targeted Initiative
McKinney Homeless Ed	3,500.0	576.2	16.5%	121.4	Competitive grants to school districts
Reorganization Incentive	3,400.0	3,228.6	95.0%	0.0	Grants to districts to encourage reorganization through consolidation/annexation
IDEA Part D	3,200.0	187.2	5.9%	22.1	Reimbursement
Nat'l Board Certification	2,756.4	0.0	0.0%	0.0	Grants
McKinney Homeless Ed - ARRA	2,581.6	1.7	0.1%	0.0	Formula - Federal Stimulus
Learn & Serve America	2,500.0	203.9	8.2%	56.4	Competitive grants
Technology for Success -State	2,175.8	780.2	35.9%	262.0	Grants
Advanced Placement Fee	2,000.0	1,308.0	65.4%	0.0	Fee reimbursement for Adv Placement Exam and Int'l Baccalaureate exam
ONPAR	2,000.0	0.0	0.0%	0.0	Grant
Title VI-Flex. & Acct Rural Education	2,000.0	6.6	0.3%	0.0	Grants to school districts
Agriculture Education	1,947.6	442.9	22.7%	0.5	Grants to school districts
Striving Readers	1,500.0	165.1	11.0%	37.0	Grants
Children's Mental Health Partner	1,464.0	0.0	0.0%	0.0	Grants
Mat'ls for the Visually Impaired	1,421.1	580.0	40.8%	75.0	Targeted Init. - with The Chicago Lighthouse for People who are Blind or Visually Impaired

**ILLINOIS STATE BOARD OF EDUCATION
HEADCOUNT AS OF NOVEMBER
2010**



**ILLINOIS STATE BOARD OF EDUCATION
AGENCY STAFF DETAIL AS OF NOVEMBER 2010**

	Mgmt.	Prof.	Support	GRF	Non-GRF	Total
SUPERINTENDENT'S OFFICE						
State Superintendent	1	0	3	4	0	4
Board Services	0	1	1	2	0	2
General Counsel	2	11	2	14	1	15
Governmental Relations	0	2	0	2	0	2
Internal Audit	<u>1</u>	<u>3</u>	<u>1</u>	<u>3</u>	<u>2</u>	<u>5</u>
Sub-Total	4	17	7	25	3	28
HUMAN RESOURCES						
Human Resources	<u>3</u>	<u>5</u>	<u>5</u>	<u>13</u>	<u>0</u>	<u>13</u>
Sub-Total	3	5	5	13	0	13
PUBLIC INFORMATION						
Public Information	<u>1</u>	<u>5</u>	<u>1</u>	<u>6</u>	<u>1</u>	<u>7</u>
Sub-Total	1	5	1	6	1	7
SPECIAL EDUCATION SERVICES						
Special Education Admin.	1	0	1	0	2	2
Special Education Services - Spfld.	2	29	6	0	37	37
Special Education Services - Chgo.	<u>1</u>	<u>17</u>	<u>1</u>	<u>0</u>	<u>19</u>	<u>19</u>
Sub-Total	4	46	8	0	58	58
EDUCATIONAL PROGRAMS						
Career & Technical Education	1	8	2	8	3	11
Early Childhood	1	8	2	6	5	11
English Language Learning	1	7	1	5	4	9
Innovation and Improvement	<u>3</u>	<u>16</u>	<u>4</u>	<u>1</u>	<u>22</u>	<u>23</u>
Sub-Total	6	39	9	20	34	54
STANDARDS & ASSESSMENTS						
Standards & Assessment Admin.	1	2	1	2	2	4
Data Analysis & Progress Reporting	1	8	2	10	1	11
Assessment	2	11	2	6	9	15
Curriculum & Instruction	<u>2</u>	<u>11</u>	<u>4</u>	<u>11</u>	<u>6</u>	<u>17</u>
	6	32	9	29	18	47

	Mgmt.	Prof.	Support	GRF	Non-GRF	Total
SCHOOL SUPPORT SERVICES FOR ALL SCHOOLS						
School Support Admin	1	0	1	2	0	2
Educator Certification	1	9	13	15	8	23
Educator & School Development	2	13	7	20	2	22
Nutrition Programs	<u>2</u>	<u>38</u>	<u>5</u>	<u>4</u>	<u>41</u>	<u>45</u>
	6	60	26	41	51	92
FISCAL SUPPORT SERVICES						
Fiscal Support Services Admin.	1	0	0	1	0	1
Budget & Financial Management	1	4	1	5	1	6
Data Systems	3	30	2	18	17	35
Technology Support	1	19	2	14	8	22
Fiscal & Procurement	2	11	5	10	8	18
Administrative Services	1	3	13	13	4	17
Funding and Disbursements	2	20	8	13	17	30
School Business Services	2	15	3	19	1	20
External Assurance	<u>2</u>	<u>17</u>	<u>2</u>	<u>8</u>	<u>13</u>	<u>21</u>
Sub-Total	15	119	36	101	69	170
GRAND TOTAL, ALL CENTERS	45	323	101	235	234	469
	10%	69%	22%	50%	50%	100%

ILLINOIS STATE BOARD OF EDUCATION
Personnel Transactions As of November 2010

Transaction Data:

	<u>FY02</u>	<u>FY03</u>	<u>FY04</u>	<u>FY05</u>	<u>FY06</u>	<u>FY07</u>	<u>FY08</u>	<u>FY09</u>	<u>FY10</u>	<u>FY11</u>
Begin Year	739	650	522	471	487	478	463	475	473	480
Hire Externally	5	29	20	77	37	44	54	30	51	7
Recall	0	11	19	4	4	0	1	1	0	0
Retire	-37	-128	-34	-30	-25	-20	-19	-15	-25	-3
Resign	-21	-13	-24	-31	-17	-33	-19	-12	-12	-15
Discharge	-9	-2	-2	-4	-7	-5	-4	-5	-7	0
Layoff	-25	-22	-30	0	0	0	0	0	0	0
Death	-2	-3	0	0	-1	-1	0	0	0	0
Other	<u>0</u>	<u>0</u>	<u>0</u>	<u>0</u>	<u>0</u>	<u>0</u>	<u>-1</u>	<u>-1</u>	<u>0</u>	<u>0</u>
End Year	650	522	471	487	478	463	475	473	480	469