

ILLINOIS STATE BOARD OF EDUCATION MEETING
October 27-28, 2010

TO: Illinois State Board of Education

FROM: Christopher A. Koch, Ed.D., State Superintendent of Education 
Linda Riley Mitchell, Chief Financial Officer 
Donald W. Evans, Director of Human Resources 

Agenda Topic: Information Item: SBE Fiscal & Administrative Monthly Reports

Materials: The following reports are available at: www.isbe.net/board/fiscal_admin_rep
Appropriations and Spending by Program – FY11
Financial Status Report (contract & grant detail) – FY11
Comparative Statement of Expenditures – FY11
Monthly Headcount Graph, Staff Detail, Personnel Transactions

Purpose of Agenda Item

To provide the Board standard reports with key information on fiscal and administrative activities of the state Agency.

Relationship to/Implications for the State Board's Strategic Plan

Not applicable – informational item only.

Expected Outcome(s) of Agenda Item

Not applicable – informational item only.

Background Information

In June 2002, the State Board adopted bylaws outlining a new committee structure under which fiscal, audit and operations issues will be handled by the Finance and Audit Committee. The Superintendent requested that the Agency organize and standardize the financial and headcount data provided to the Board for their future policy work and decision making.

Currently, the following reports are provided:

1. Budget/Annual Report (annually in January)
2. Condition of Public Education (December)
3. Comptroller SEA Report (annually in February)
4. Appropriation and Expenditure (monthly)
5. Financial Status Report – Contract/Grant Detail (monthly)
6. Comparative Statement of Expenditures (monthly)
7. Headcount Reports (monthly)
Personnel Transactions, Staff Detail by Division, & Monthly Headcount Graph

Analysis and Implications for Policy, Budget, Legislative Action and Communications

The monthly or Quarterly Fiscal and Headcount Reports were first provided to the Board in August 2002. These reports provide information regarding staffing and funding as well as details of contracts over \$50,000 and grants the Agency is processing.

All contracts and grants totaling over \$1 million are reviewed at the Board level. Included in this month's review is:

- Illinois Community College Board (ICCB) ARRA Longitudinal Data System
- Illinois Board of Higher Education (IBHE) ARRA Longitudinal Data System
- IBM Contract for Illinois Student Information System (SIS) Contract
- University of Illinois Contract Extension (Illinois New Teacher Collaborative)

Superintendent's Recommendation

None needed.

Next Steps

Continue to provide these reports pursuant to the schedule above.

Illinois State Board of Education
2011 Appropriation & Spending by Program 07/01/2010 thru 09/30/2010
(Dollars in Thousands)

Initiatives	Appropriation			YTD Expenditures		
	Total	Grants	Admin	Total	Grants	Admin
STATE						
Distributive Grants	<u>\$6,449,851.6</u>	<u>\$6,449,851.6</u>	<u>\$0.0</u>	<u>\$1,252,424.1</u>	<u>\$1,252,424.1</u>	<u>\$0.0</u>
General State Aid	\$4,600,305.1	\$4,600,305.1	\$0.0	\$829,575.5	\$829,575.5	\$0.0
General State Aid/Hold Harmless	\$0.0	\$0.0	\$0.0	\$0.0	\$0.0	\$0.0
Charter Schools - Transition Impact Aid	\$0.0	\$0.0	\$0.0	\$0.0	\$0.0	\$0.0
District Consolidation Cost	\$3,700.0	\$3,700.0	\$0.0	\$3,228.6	\$3,228.6	\$0.0
Fast Growth Grants	\$0.0	\$0.0	\$0.0	\$0.0	\$0.0	\$0.0
Gifted Education	\$0.0	\$0.0	\$0.0	\$0.0	\$0.0	\$0.0
Homeless Education	\$0.0	\$0.0	\$0.0	\$0.0	\$0.0	\$0.0
School Breakfast Incentive Program	\$0.0	\$0.0	\$0.0	\$0.0	\$0.0	\$0.0
Transition Assistance	\$0.0	\$0.0	\$0.0	\$0.0	\$0.0	\$0.0
Mandated Categoricals	<u>\$1,845,846.5</u>	<u>\$1,845,846.5</u>	<u>\$0.0</u>	<u>\$419,620.0</u>	<u>\$419,620.0</u>	<u>\$0.0</u>
Illinois Free Lunch/Breakfast	\$26,300.0	\$26,300.0	\$0.0	\$13,723.4	\$13,723.4	\$0.0
Orphanage Tuition 18-3 (Reg Ed)	\$13,000.0	\$13,000.0	\$0.0	\$2,952.8	\$2,952.8	\$0.0
Sp-Ed - Extraordinary Services	\$334,236.8	\$334,236.8	\$0.0	\$59,159.9	\$59,159.9	\$0.0
Sp-Ed - Orphanage Tuition 14-7.03	\$120,200.0	\$120,200.0	\$0.0	\$46,360.1	\$46,360.1	\$0.0
Sp-Ed - Personnel Reimbursement	\$459,600.0	\$459,600.0	\$0.0	\$92,522.0	\$92,522.0	\$0.0
Sp-Ed - Private Tuition	\$181,100.0	\$181,100.0	\$0.0	\$71,052.3	\$71,052.3	\$0.0
Sp-Ed - Summer School	\$11,700.0	\$11,700.0	\$0.0	\$6,364.8	\$6,364.8	\$0.0
Sp-Ed - Transportation	\$429,700.0	\$429,700.0	\$0.0	\$70,235.7	\$70,235.7	\$0.0
Transportation - Regular/Vocational	\$270,009.7	\$270,009.7	\$0.0	\$57,249.0	\$57,249.0	\$0.0
Standards - Assessment & Accountability	<u>\$30,137.5</u>	<u>\$1,002.8</u>	<u>\$29,134.7</u>	<u>\$198.6</u>	<u>\$0.0</u>	<u>\$198.6</u>
American Diploma Project	\$400.0	\$0.0	\$400.0	\$120.0	\$0.0	\$120.0
Assessments	\$26,334.7	\$0.0	\$26,334.7	\$78.6	\$0.0	\$78.6
Growth Model	\$2,400.0	\$0.0	\$2,400.0	\$0.0	\$0.0	\$0.0
System of Support	\$1,002.8	\$1,002.8	\$0.0	\$0.0	\$0.0	\$0.0
Ensuring Quality Ed Personnel	<u>\$9,440.2</u>	<u>\$8,609.4</u>	<u>\$830.8</u>	<u>\$107.2</u>	<u>\$107.2</u>	<u>\$0.0</u>
Grow Your Own Teachers	\$0.0	\$0.0	\$0.0	\$0.0	\$0.0	\$0.0
National Board Certification	\$2,756.4	\$2,756.4	\$0.0	\$0.0	\$0.0	\$0.0
Principal Mentoring Program	\$830.8	\$0.0	\$830.8	\$0.0	\$0.0	\$0.0
Teach for America	\$225.0	\$225.0	\$0.0	\$0.0	\$0.0	\$0.0
Teacher and Admin. Mentoring Program	\$5,628.0	\$5,628.0	\$0.0	\$107.2	\$107.2	\$0.0
Early Childhood	<u>\$342,235.4</u>	<u>\$340,393.3</u>	<u>\$1,842.1</u>	<u>\$61,460.3</u>	<u>\$61,317.9</u>	<u>\$142.4</u>

NON STATE

School Infrastructure Fund	<u>\$723.8</u>	<u>\$0.0</u>	<u>\$723.8</u>	<u>\$29.3</u>	<u>\$0.0</u>	<u>\$29.3</u>
School Infrastructure (Debt Admin)	\$723.8	\$0.0	\$723.8	\$29.3	\$0.0	\$29.3
Driver Education	<u>\$24,321.3</u>	<u>\$24,229.6</u>	<u>\$91.7</u>	<u>\$6,070.2</u>	<u>\$6,057.4</u>	<u>\$12.8</u>
Other Funds	<u>\$163,828.9</u>	<u>\$142,420.0</u>	<u>\$21,408.9</u>	<u>\$355.5</u>	<u>\$0.0</u>	<u>\$355.5</u>
Charter Schools Revolving Loan Fund	\$20.0	\$20.0	\$0.0	\$0.0	\$0.0	\$0.0
Emergency Financial Assistance Fund	\$1,000.0	\$1,000.0	\$0.0	\$0.0	\$0.0	\$0.0
Indirect Costs	\$7,015.2	\$0.0	\$7,015.2	\$249.5	\$0.0	\$249.5
ISBE - Special Purpose Trust Fund	\$8,484.8	\$0.0	\$8,484.8	\$0.0	\$0.0	\$0.0
ISBE Teacher Certificate Institute Fund	\$2,208.9	\$0.0	\$2,208.9	\$55.5	\$0.0	\$55.5
Capital Development Fund-School Const.	\$25,000.0	\$25,000.0	\$0.0	\$0.0	\$0.0	\$0.0
School Construction Maintenance Fund	\$100,000.0	\$100,000.0	\$0.0	\$0.0	\$0.0	\$0.0
Technology Immersion - Build IL Bond Fund	\$10,000.0	\$10,000.0	\$0.0	\$0.0	\$0.0	\$0.0
School Technology Revolving Loan	\$5,000.0	\$5,000.0	\$0.0	\$0.0	\$0.0	\$0.0
Teacher Certification Fee Revolving Fund	\$3,700.0	\$0.0	\$3,700.0	\$50.5	\$0.0	\$50.5
Temporary Relocation Revolving Fund	\$1,400.0	\$1,400.0	\$0.0	\$0.0	\$0.0	\$0.0

FEDERAL

Federal Funds	<u>\$4,542,607.3</u>	<u>\$4,455,588.5</u>	<u>\$87,018.9</u>	<u>\$112,663.5</u>	<u>\$97,708.3</u>	<u>\$14,955.2</u>
Advanced Placement Fee Payment	\$2,099.1	\$2,000.0	\$99.1	\$0.0	\$0.0	\$0.0
ARRA - Child Nutrition Sch Lunch Equipment	\$3,657.3	\$3,657.3	\$0.0	\$0.0	\$0.0	\$0.0
ARRA - Longitudinal Data Systems	\$4,300.0	\$0.0	\$4,300.0	\$8.4	\$0.0	\$8.4
ARRA - IDEA - Part B	\$506,479.8	\$506,479.8	\$0.0	\$8,785.6	\$8,785.6	\$0.0
ARRA - IDEA - Pre-School	\$18,311.5	\$18,311.5	\$0.0	\$112.6	\$112.6	\$0.0
ARRA - Education Jobs Fund	\$415,397.8	\$415,397.8	\$0.0	\$4,639.8	\$4,639.8	\$0.0
ARRA - McKinney Homeless	\$2,581.6	\$2,581.6	\$0.0	\$0.0	\$0.0	\$0.0
ARRA - Race to the Top	\$400,000.0	\$400,000.0	\$0.0	\$0.0	\$0.0	\$0.0
ARRA - Title I	\$302,441.5	\$302,441.5	\$0.0	\$1,274.0	\$1,274.0	\$0.0
ARRA - Titel I School Improvement (1003G)	\$242,023.0	\$242,023.0	\$0.0	\$0.0	\$0.0	\$0.0
ARRA - Title II Technology	\$26,523.2	\$26,196.1	\$327.1	\$1,351.7	\$1,346.0	\$5.7
Career & Technical Education	\$56,289.9	\$55,000.0	\$1,289.9	\$7,190.7	\$7,008.2	\$182.5
Career & Technical Education - Technical Prep	\$5,175.0	\$5,000.0	\$175.0	\$174.9	\$135.8	\$39.0
Charter Schools	\$9,171.5	\$9,000.0	\$171.5	\$223.8	\$223.8	\$0.0
Child Nutrition	\$735,365.1	\$725,000.0	\$10,365.1	\$39,077.1	\$37,376.4	\$1,700.7
IDEA - Deaf Blind, Part C	\$450.0	\$450.0	\$0.0	\$32.4	\$32.4	\$0.0
IDEA - Improvement Plan	\$3,440.3	\$3,200.0	\$240.3	\$197.2	\$165.1	\$32.1
IDEA - Model Outreach	\$400.0	\$400.0	\$0.0	\$0.0	\$0.0	\$0.0
IDEA - Pre-School	\$25,963.9	\$25,000.0	\$963.9	\$1,414.3	\$1,295.7	\$118.6
Illinois Purchase Care Review Board	\$360.7	\$0.0	\$360.7	\$107.3	\$0.0	\$107.3
Individuals with Disabilities Educ. Act, Pt. B	\$663,693.1	\$650,000.0	\$13,693.1	\$11,587.8	\$9,331.4	\$2,256.4
Integration of Schools & Mental Health Systems	\$0.0	\$0.0	\$0.0	\$0.0	\$0.0	\$0.0

Learn and Serve America	\$2,600.0	\$2,500.0	\$100.0	\$38.2	\$38.2	\$0.0
Longitudinal Data System	\$3,900.0	\$0.0	\$3,900.0	\$209.6	\$0.0	\$209.6
Math & Science Partnerships	\$12,705.5	\$12,000.0	\$705.5	\$700.4	\$663.7	\$36.7
National Center for Education Statistics	\$221.6	\$0.0	\$221.6	\$42.8	\$0.0	\$42.8
ONPAR	\$2,000.0	\$2,000.0	\$0.0	\$0.0	\$0.0	\$0.0
Refugee	\$0.0	\$0.0	\$0.0	\$0.0	\$0.0	\$0.0
School Health Programs	\$1,022.7	\$0.0	\$1,022.7	\$36.2	\$0.0	\$36.2
Special Congressional Initiatives	\$5,000.0	\$4,920.5	\$79.5	\$9.8	\$0.0	\$9.8
Striving Readers	\$1,500.0	\$1,229.4	\$270.6	\$22.9	\$0.0	\$22.9
Title I - Basic Programs	\$680,491.3	\$668,733.1	\$11,758.2	\$14,293.3	\$12,919.7	\$1,373.6
Title I - Comprehensive School Reform	\$35.5	\$0.0	\$35.5	\$0.0	\$0.0	\$0.0
Title I - Education of Migratory Children	\$4,466.8	\$4,403.8	\$63.0	\$273.5	\$268.5	\$5.0
Title I - Even Start Family Literacy Programs	\$3,224.7	\$2,995.0	\$229.7	\$292.9	\$260.8	\$32.1
Title I - Neglected and Delinquent	\$1,378.0	\$1,369.0	\$9.0	\$0.0	\$0.0	\$0.0
Title I - Reading First	\$22,022.1	\$20,000.0	\$2,022.1	\$4,721.7	\$4,565.9	\$155.8
Title I - School Improvement	\$74,640.7	\$72,499.1	\$2,141.6	\$703.7	\$551.8	\$151.9
Title II - Enhance Ed through Technology	\$20,883.7	\$20,000.0	\$883.7	\$1,431.7	\$1,377.7	\$53.9
Title II - Quality Teachers	\$137,826.6	\$135,000.0	\$2,826.6	\$4,061.0	\$3,971.5	\$89.5
Title III - English Language Acquisition	\$42,188.2	\$40,000.0	\$2,188.2	\$298.1	\$42.5	\$255.6
Title IV - 21st Century Schools	\$56,709.5	\$55,000.0	\$1,709.5	\$1,534.3	\$1,298.1	\$236.2
Title IV - Safe & Drug Free Schools	\$15,379.4	\$15,000.0	\$379.4	\$90.8	\$23.1	\$67.7
Title V - Innovative Programs	\$185.0	\$0.0	\$185.0	\$0.0	\$0.0	\$0.0
Title VI - Rural & Low Income Programs	\$2,050.0	\$2,000.0	\$50.0	\$0.0	\$0.0	\$0.0
Title VI - State Assessment	\$23,780.3	\$0.0	\$23,780.3	\$7,687.2	\$0.0	\$7,687.2
Title X - McKinney Homeless Assistance	\$3,930.7	\$3,500.0	\$430.7	\$38.0	\$0.0	\$38.0
Transition to Teaching	\$340.8	\$300.0	\$40.8	\$0.0	\$0.0	\$0.0
TOTAL - ALL FUNDS:	\$11,751,242.4	\$11,582,594.6	\$168,647.9	\$1,457,590.6	\$1,435,413.6	\$22,177.0

ILLINOIS STATE BOARD OF EDUCATION
Financial Status Report
July 1, 2010 through September 30, 2010
(Fiscal Year 2011)

	Appropriation Amount	Expenditures to Date	Unexpended Appropriation	Percentage spent YTD	Percentage Unexpended
<u>General Revenue Fund</u>					
Personal Services and Related Expenditures	\$ 16,745,700	\$ 4,704,323	\$ 12,041,377	28.09%	71.91%
Contractual Services	6,007,200	1,027,427	4,979,773	17.10%	82.90%
Travel	332,500	40,397	292,103	12.15%	87.85%
Commodities	75,000	10,960	64,040	14.61%	85.39%
Printing	88,500	-	88,500	0.00%	100.00%
Equipment	88,900	6,246	82,654	7.03%	92.97%
Telecommunications	375,300	51,550	323,750	13.74%	86.26%
Operation of Automotive Equipment	23,800	772	23,028	3.24%	96.76%
Lump Sums	812,500	123,590	688,910	15.21%	84.79%
<i>Sub-total</i>	24,549,400	5,965,264	18,584,136	24.30%	75.70%
Awards and Grants	2,385,806,700	500,803,534	1,885,003,166	20.99%	79.01%
Total General Revenue Fund	\$ 2,410,356,100	\$ 506,768,798	\$ 1,903,587,302	21.02%	78.98%
<u>Education Assistance Fund</u>					
Awards and Grants	\$ 602,439,300	\$ 156,433,227	\$ 446,006,073	25.97%	74.03%
<u>Common School Fund</u>					
Compensation for Regional Superintendents and Asst. Superintendents	\$ 9,100,000	\$ 2,127,890	\$ 6,972,110	23.38%	76.62%
General State Aid	3,997,865,800	673,142,234	3,324,723,566	16.84%	83.16%
Total Common School Fund	\$ 4,006,965,800	\$ 675,270,124	\$ 3,331,695,676	16.85%	83.15%
<u>Teacher Certification Fee Revolving Fund</u>					
Lump Sums	\$ 3,700,000	\$ 50,539	\$ 3,649,461	1.37%	98.63%

ILLINOIS STATE BOARD OF EDUCATION
Financial Status Report
July 1, 2010 through September 30, 2010
(Fiscal Year 2011)

	Appropriation Amount	Expenditures to Date	Unexpended Appropriation	Percentage spent YTD	Percentage Unexpended
<u>Drivers Education Fund</u>					
Personal Services and Related Expenditures	\$ 91,650	\$ 12,772	\$ 78,878	13.94%	86.06%
Awards and Grants	24,229,600	6,057,391	18,172,209	25.00%	75.00%
Total Drivers Education Fund	\$ 24,321,250	\$ 6,070,163	\$ 18,251,087	24.96%	75.04%
<u>School Dist. Emergency Financial Asst. Fund</u>					
Awards and Grants	\$ 1,000,000	\$ -	\$ 1,000,000	0.00%	100.00%
<u>SBE Special Purpose Trust Fund</u>					
Lump Sums	\$ 15,500,000	\$ 249,500	\$ 15,250,500	1.61%	98.39%
<u>SBE Teacher Certification Institution Fund</u>					
Lump Sums	\$ 2,208,900	\$ 55,456	\$ 2,153,444	2.51%	97.49%
<u>SBE Federal Department of Agriculture Fund</u>					
Personal Services and Related Expenditures	\$ 5,513,800	\$ 1,256,940	\$ 4,256,860	22.80%	77.20%
Contractual Services	4,010,000	400,263	3,609,737	9.98%	90.02%
Travel	400,000	43,420	356,580	10.85%	89.15%
Commodities	85,000	42	84,958	0.05%	99.95%
Printing	156,300	-	156,300	0.00%	100.00%
Equipment	150,000	-	150,000	0.00%	100.00%
Telecommunications	50,000	-	50,000	0.00%	100.00%
Sub-total	10,365,100	1,700,664	8,664,436	16.41%	83.59%
Awards and Grants	728,657,300	37,376,444	691,280,856	5.13%	94.87%
Total SBE Federal Department of Agriculture Fund	\$ 739,022,400	\$ 39,077,109	\$ 699,945,291	5.29%	94.71%

ILLINOIS STATE BOARD OF EDUCATION
Financial Status Report
July 1, 2010 through September 30, 2010
(Fiscal Year 2011)

	Appropriation Amount	Expenditures to Date	Unexpended Appropriation	Percentage spent YTD	Percentage Unexpended
<u>SBE Federal Agency Services Fund</u>					
Personal Services and Related Expenditures	\$ 152,000	\$ 34,404	\$ 117,596	22.63%	77.37%
Contractual Services	900,000	-	900,000	0.00%	100.00%
Travel	30,000	1,758	28,242	5.86%	94.14%
Commodities	20,000	-	20,000	0.00%	100.00%
Printing	700	-	700	0.00%	100.00%
Equipment	11,000	-	11,000	0.00%	100.00%
Telecommunications	9,000	-	9,000	0.00%	100.00%
<i>Sub-total</i>	<u>1,122,700</u>	<u>36,161</u>	<u>1,086,539</u>	<u>3.22%</u>	<u>96.78%</u>
Awards and Grants	<u>2,500,000</u>	<u>38,152</u>	<u>2,461,848</u>	<u>1.53%</u>	<u>98.47%</u>
Total SBE Federal Agency Services Fund	<u>\$ 3,622,700</u>	<u>\$ 74,313</u>	<u>\$ 3,548,387</u>	<u>2.05%</u>	<u>97.95%</u>
<u>SBE Federal Department of Education Fund</u>					
Personal Services and Related Expenditures	\$ 20,372,500	\$ 3,559,397	\$ 16,813,103	17.47%	82.53%
Contractual Services	19,400,000	1,622,100	17,777,900	8.36%	91.64%
Travel	1,600,000	92,061	1,507,939	5.75%	94.25%
Commodities	305,000	1,326	303,674	0.43%	99.57%
Printing	341,000	-	341,000	0.00%	100.00%
Equipment	455,000	-	455,000	0.00%	100.00%
Telecommunications	400,000	-	400,000	0.00%	100.00%
Lump Sums	23,780,300	7,687,159	16,093,141	32.33%	67.67%
<i>Sub-total</i>	<u>66,653,800</u>	<u>12,962,044</u>	<u>53,691,756</u>	<u>19.45%</u>	<u>80.55%</u>
Awards and Grants	<u>3,317,910,600</u>	<u>55,910,225</u>	<u>3,262,000,375</u>	<u>1.69%</u>	<u>98.31%</u>
Total SBE Federal Department of Education Fund	<u>\$ 3,384,564,400</u>	<u>\$ 68,872,268</u>	<u>\$ 3,315,692,132</u>	<u>2.03%</u>	<u>97.97%</u>
<u>Charter Schools Revolving Loan Program Fund</u>					
Awards and Grants	<u>\$ 20,000</u>	<u>\$ -</u>	<u>\$ 20,000</u>	<u>0.00%</u>	<u>100.00%</u>
<u>School Infrastructure Fund</u>					
Personal Services and Related Expenditures	<u>\$ 723,750</u>	<u>\$ 29,307</u>	<u>\$ 694,443</u>	<u>4.05%</u>	<u>95.95%</u>

ILLINOIS STATE BOARD OF EDUCATION
Financial Status Report
July 1, 2010 through September 30, 2010
(Fiscal Year 2011)

	Appropriation Amount	Expenditures to Date	Unexpended Appropriation	Percentage spent YTD	Percentage Unexpended
<u>School Technology Revolving Loan Program Fund</u>					
Awards and Grants	\$ 5,000,000	\$ -	\$ 5,000,000	0.00%	100.00%
<u>Temporary Relocation Expenses Revolving Grant Fund</u>					
Awards and Grants	\$ 1,400,000	\$ -	\$ 1,400,000	0.00%	100.00%
<u>Capital Development Fund</u>					
Grants for Educational Purposes	\$ 25,000,000	\$ -	\$ 25,000,000	0.00%	100.00%
<u>School Construction Fund</u>					
Construction Grants	\$ 100,000,000	\$ -	\$ 100,000,000	0.00%	100.00%
<u>Build Illinois Bond Fund</u>					
Construction Grants	\$ 10,000,000	\$ -	\$ 10,000,000	0.00%	100.00%
<u>U.S. Dept. of Education Jobs Program Federal Trust Fund</u>					
Awards and Grants	\$ 415,397,841	\$ 4,639,789	\$ 410,758,052	1.12%	98.88%
ISBE TOTALS	\$ 11,751,242,441	\$ 1,457,590,593	\$ 10,293,651,848	12.40%	87.60%

ILLINOIS STATE BOARD OF EDUCATION
Combined Financial Status Report
July 1, 2010 through September 30, 2010
(Fiscal Year 2011)

	Appropriation Amount	Expenditures to Date (Direct)	Federal Indirect Cost Recovery Expenditures	Unexpended Appropriation	Percentage spent YTD	Percentage Unexpended
All Funds						
Personal Services and Related Expenditures	\$ 43,760,600	\$ 9,597,143	\$ 161,200	\$ 34,002,257	21.93%	77.70%
Contractual Services	30,385,714	3,049,790	68,514	27,267,410	10.04%	89.74%
Travel	2,369,074	177,635	6,574	2,184,865	7.50%	92.22%
Commodities	490,830	12,328	5,830	472,672	2.51%	96.30%
Printing	586,500	-	-	586,500	0.00%	100.00%
Equipment	704,900	6,246	-	698,654	0.89%	99.11%
Telecommunications	841,681	51,550	7,381	782,750	6.12%	93.00%
Operation of Automotive Equipment	23,800	772	-	23,028	3.24%	96.76%
Lump Sums	45,752,200	7,916,744	-	37,835,456	17.30%	82.70%
Sub-total	124,915,300	21,061,707	249,500	103,853,593	16.86%	83.14%
Awards and Grants	11,516,327,141	1,436,528,886	-	10,079,798,255	12.47%	87.53%
Construction Grants	110,000,000	-	-	110,000,000	0.00%	100.00%
Total All Funds	\$ 11,751,242,441	\$ 1,457,341,093	\$ 249,500	\$ 10,293,651,848	12.40%	87.60%

General Revenue Fund

Personal Services and Related Expenditures	\$ 16,745,700	\$ 4,704,323	\$ -	\$ 12,041,377	28.09%	71.91%
Contractual Services	6,007,200	1,027,427	-	4,979,773	17.10%	82.90%
Travel	332,500	40,397	-	292,103	12.15%	87.85%
Commodities	75,000	10,960	-	64,040	14.61%	85.39%
Printing	88,500	-	-	88,500	0.00%	100.00%
Equipment	88,900	6,246	-	82,654	7.03%	92.97%
Telecommunications	375,300	51,550	-	323,750	13.74%	86.26%
Operation of Automotive Equipment	23,800	772	-	23,028	3.24%	96.76%
Lump Sums	812,500	123,590	-	688,910	15.21%	84.79%
Sub-total	24,549,400	5,965,264	-	18,584,136	24.30%	75.70%
Awards and Grants	2,385,806,700	500,803,534	-	1,885,003,166	20.99%	79.01%
Total General Revenue Fund	\$ 2,410,356,100	\$ 506,768,798	\$ -	\$ 1,903,587,302	21.02%	78.98%

Other State Funds

Personal Services and Related Expenditures	\$ 815,400	\$ 42,079	\$ -	\$ 773,321	5.16%	94.84%
Lump Sums	21,408,900	355,495	-	21,053,405	1.66%	98.34%
Sub-total	22,224,300	397,574	-	21,826,726	1.79%	98.21%
Awards and Grants	4,666,054,700	837,760,742	-	3,828,293,958	17.95%	82.05%
Construction Grants	110,000,000	-	-	110,000,000	0.00%	100.00%
Total Other State Funds	\$ 4,798,279,000	\$ 838,158,315	\$ -	\$ 3,960,120,685	17.47%	82.53%

Federal Funds

Personal Services and Related Expenditures	\$ 26,038,300	\$ 4,850,741	\$ -	\$ 21,187,559	18.63%	81.37%
Contractual Services	24,310,000	2,022,363	-	22,287,637	8.32%	91.68%
Travel	2,030,000	137,238	-	1,892,762	6.76%	93.24%
Commodities	410,000	1,368	-	408,632	0.33%	99.67%
Printing	498,000	-	-	498,000	0.00%	100.00%
Equipment	616,000	-	-	616,000	0.00%	100.00%
Telecommunications	459,000	-	-	459,000	0.00%	100.00%
Lump Sums	23,780,300	7,687,159	-	16,093,141	32.33%	67.67%
Sub-total	78,141,600	14,698,869	-	63,442,731	18.81%	81.19%
Awards and Grants	4,464,465,741	97,964,610	-	4,366,501,131	2.19%	97.81%
Total Federal Funds	\$ 4,542,607,341	\$ 112,663,479	\$ -	\$ 4,429,943,862	2.48%	97.52%

ILLINOIS STATE BOARD OF EDUCATION
Awards and Grants Expenditures
July 1, 2010 through September 30, 2010
(Fiscal Year 2011)

<u><i>General Revenue Fund</i></u>	Appropriation Amount	Expenditures to Date	Unexpended Appropriation	Percentage spent YTD	Percentage Unexpended
Advanced Placement Classes	\$ 527,000	\$ -	\$ 527,000	0.00%	100.00%
Agriculture Education	1,947,600	21,400	1,926,200	1.10%	98.90%
Arts and Foreign Language	1,280,000	-	1,280,000	0.00%	100.00%
Bilingual Education	63,381,200	-	63,381,200	0.00%	100.00%
Vocational Education Career and Technical Education	38,562,100	9,182,666	29,379,434	23.81%	76.19%
Early Childhood Education	340,393,300	61,317,886	279,075,414	18.01%	81.99%
Standards, Assessments and Accountability	1,002,800	-	1,002,800	0.00%	100.00%
Technology for Success	1,785,000	350,416	1,434,584	19.63%	80.37%
ROE School Bus Driver Training	70,000	70,000	-	100.00%	0.00%
ROE and ISC Operations Reimbursement	4,271,500	1,050,932	3,220,568	24.60%	75.40%
Autism Training & Technical Assistance	100,000	-	100,000	0.00%	100.00%
Recording for Blind and Dyslexic	816,600	-	816,600	0.00%	100.00%
Children's Mental Health Partnership	1,464,000	-	1,464,000	0.00%	100.00%
Educational Materials Unit	1,421,100	405,000	1,016,100	28.50%	71.50%
Philip Rock Center Reimbursement	3,577,800	600,000	2,977,800	16.77%	83.23%
Alternative Education	9,341,900	-	9,341,900	0.00%	100.00%
Re-enrollment Student Program	3,600,000	-	3,600,000	0.00%	100.00%
Truant Alternative/Optional Education	14,059,000	3,767,800	10,291,200	26.80%	73.20%
National Board Certification Reimbursement	2,756,400	-	2,756,400	0.00%	100.00%
Teach America	225,000	-	225,000	0.00%	100.00%
Teachers and Administrators Mentoring	5,628,000	107,218	5,520,782	1.91%	98.09%
Reorganization Incentive	3,400,000	3,228,635	171,365	94.96%	5.04%
Reorganization Incentive Feasibility Study	300,000	-	300,000	0.00%	100.00%
Response to Intervention	972,000	-	972,000	0.00%	100.00%
Special Education-Private Tuition	181,100,000	71,052,326	110,047,674	39.23%	60.77%
Special Education-Extraordinary	275,076,800	59,159,925	215,916,875	21.51%	78.49%
Special Education-Personnel	459,600,000	92,521,989	367,078,011	20.13%	79.87%
Special Education-Orphanage Tuition	120,200,000	46,360,112	73,839,888	38.57%	61.43%
Transportation-Regular/Vocational	270,009,700	57,248,976	212,760,724	21.20%	78.80%
Transportation-Special Education	357,096,600	70,235,652	286,860,948	19.67%	80.33%
Free Lunch/Breakfast	26,300,000	13,723,405	12,576,595	52.18%	47.82%
Orphanage Tuition	13,000,000	2,952,827	10,047,173	22.71%	77.29%
Special Education-Summer School	11,700,000	6,364,800	5,335,200	54.40%	45.60%
Special Education-Governor Discretionary	35,102,200	-	35,102,200	0.00%	100.00%
Tax Equivalent Grants	222,600	222,600	-	100.00%	0.00%
After School Matters	4,000,000	-	4,000,000	0.00%	100.00%
Total General Revenue Fund	\$ 2,254,290,200	\$ 499,944,564	\$ 1,754,345,636	22.18%	77.82%

ILLINOIS STATE BOARD OF EDUCATION
Awards and Grants Expenditures
July 1, 2010 through September 30, 2010
(Fiscal Year 2011)

	Appropriation Amount	Expenditures to Date	Unexpended Appropriation	Percentage spent YTD	Percentage Unexpended
<u>Education Assistance Fund</u>					
General State Aid	\$ 602,439,300	\$ 156,433,227	\$ 446,006,073	25.97%	74.03%
Total Education Assistance Fund	\$ 602,439,300	\$ 156,433,227	\$ 446,006,073	25.97%	74.03%
<u>Common School Fund</u>					
Compensation for Regional Superintendents and Asst. Superintendents	\$ 9,100,000	\$ 2,127,890	\$ 6,972,110	23.38%	76.62%
General State Aid	3,997,865,800	673,142,234	3,324,723,566	16.84%	83.16%
Total Common School Fund	\$ 4,006,965,800	\$ 675,270,124	\$ 3,331,695,676	16.85%	83.15%
<u>Drivers Education Fund</u>					
Driver Education Grants	\$ 24,229,600	\$ 6,057,391	\$ 18,172,209	25.00%	75.00%
Total Drivers Education Fund	\$ 24,229,600.0	\$ 6,057,391	\$ 18,172,208.9	25.00%	75.00%
<u>School Dist. Emergency Financial Asst. Fund</u>					
School District Emergency Financial Assistance	\$ 1,000,000	\$ -	\$ 1,000,000	0.00%	100.00%
Total School Dist. Emergency Fin. Asst. Fund	\$ 1,000,000	\$ -	\$ 1,000,000	0.00%	100.00%
<u>SBE Federal Department of Agriculture Fund</u>					
Federal Nutrition Programs	\$ 725,000,000	\$ 37,376,444	\$ 687,623,556	5.16%	94.84%
ARRA	3,657,300	-	3,657,300	0.00%	100.00%
Total SBE Federal Department of Agriculture Fund	\$ 728,657,300	\$ 37,376,444	\$ 691,280,856	5.13%	94.87%
<u>SBE Federal Agency Services Fund</u>					
Learn and Serve America	\$ 2,500,000	\$ 38,152	\$ 2,461,848	1.53%	98.47%
Total SBE Federal Agency Services Fund	\$ 2,500,000	\$ 38,152	\$ 2,461,848	1.53%	98.47%

ILLINOIS STATE BOARD OF EDUCATION
Awards and Grants Expenditures
July 1, 2010 through September 30, 2010
(Fiscal Year 2011)

	Appropriation Amount	Expenditures to Date	Unexpended Appropriation	Percentage spent YTD	Percentage Unexpended
<u>SBE Federal Department of Education Fund</u>					
Title VI Rural and Low Income Students	\$ 2,000,000	\$ -	\$ 2,000,000	0.00%	100.00%
Title III - English Language Acquisition	40,000,000	42,500	39,957,500	0.11%	99.89%
ONPAR	2,000,000	-	2,000,000	0.00%	100.00%
Enhancing Education Through Technology	20,000,000	1,377,745	18,622,255	6.89%	93.11%
Charter Schools	9,000,000	223,817	8,776,183	2.49%	97.51%
Advanced Placement Fee	2,000,000	-	2,000,000	0.00%	100.00%
Title I - Basic	750,000,000	14,000,808	735,999,192	1.87%	98.13%
Title I - Reading First	20,000,000	4,565,910	15,434,090	22.83%	77.17%
Title IV - Safe & Drug Free Schools	15,000,000	23,137	14,976,863	0.15%	99.85%
Title IV - 21st Century/Community Service	55,000,000	1,298,088	53,701,912	2.36%	97.64%
Title II - Teacher Quality	135,000,000	3,971,488	131,028,512	2.94%	97.06%
Title II - Transition to Teaching	300,000	-	300,000	0.00%	100.00%
Title II - Math/Science Partnerships	12,000,000	663,675	11,336,325	5.53%	94.47%
Title X - McKinney Homeless	3,500,000	-	3,500,000	0.00%	100.00%
Longitudinal Data Systems	3,900,000	209,595	3,690,405	5.37%	94.63%
IDEA - Preschool	25,000,000	1,295,674	23,704,326	5.18%	94.82%
IDEA - Improvement	3,200,000	165,065	3,034,935	5.16%	94.84%
IDEA	650,000,000	9,331,359	640,668,641	1.44%	98.56%
IDEA - Model Outreach	400,000	-	400,000	0.00%	100.00%
IDEA - Deaf/Blind	450,000	32,444	417,556	7.21%	92.79%
Career and Technical Education - Basic Perkins	54,000,000	7,008,173	46,991,827	12.98%	87.02%
Career and Technical Education - Tech Prep	5,000,000	135,828	4,864,172	2.72%	97.28%
Special Federal Congressional Initiatives	4,920,463	-	4,920,463	0.00%	100.00%
Striving Readers	891,048	22,920	868,128	2.57%	97.43%
Title I ARRA	544,464,500	1,274,046	543,190,454	0.23%	99.77%
IDEA ARRA	506,479,800	8,785,564	497,694,236	1.73%	98.27%
IDEA Preschool ARRA	18,311,500	112,582	18,198,918	0.61%	99.39%
Enhancing Education Through Technology-ARRA	26,523,200	1,351,690	25,171,510	5.10%	94.90%
Title X-Homeless Education ARRA	2,581,600	-	2,581,600	0.00%	100.00%
Longitudinal Data System-ARRA	4,300,000	8,357	4,291,644	0.19%	99.81%
Race to the Top	400,000,000	-	400,000,000	0.00%	100.00%
Total SBE Federal Department of Education Fund	\$ 3,316,222,111	\$ 55,900,464	\$ 3,260,321,647	1.69%	98.31%
<u>Charter Schools Revolving Loan Program Fund</u>					
Charter Schools Revolving Loans	\$ 20,000	\$ -	\$ 20,000	0.00%	100.00%
Total Charter Schools Rev. Loan Program Fund	\$ 20,000	\$ -	\$ 20,000	0.00%	100.00%

ILLINOIS STATE BOARD OF EDUCATION
Awards and Grants Expenditures
July 1, 2010 through September 30, 2010
(Fiscal Year 2011)

	Appropriation Amount	Expenditures to Date	Unexpended Appropriation	Percentage spent YTD	Percentage Unexpended
<u>School Technology Revolving Loan Program Fund</u>					
School Technology Revolving Loans	\$ 5,000,000	\$ -	\$ 5,000,000	0.00%	100.00%
Total School Technology Rev. Loan Program Fund	\$ 5,000,000	\$ -	\$ 5,000,000	0.00%	100.00%
<u>Temporary Relocation Expenses Revolving Grant Fund</u>					
Temporary Relocation Revolving Loans/Grants	\$ 1,400,000	\$ -	\$ 1,400,000	0.00%	100.00%
Total Temporary Relocation Exp. Rev. Grant Fund	\$ 1,400,000	\$ -	\$ 1,400,000	0.00%	100.00%
<u>Capital Development Fund</u>					
Grants for Educational Purposes	\$ 25,000,000	\$ -	\$ 25,000,000	0.00%	100.00%
Total Capital Development Fund	\$ 25,000,000	\$ -	\$ 25,000,000	0.00%	100.00%
<u>School Construction Fund</u>					
Construction Grants	\$ 100,000,000	\$ -	\$ 100,000,000	0.00%	100.00%
Total School Construction Fund	\$ 100,000,000	\$ -	\$ 100,000,000	0.00%	100.00%
<u>Build Illinois Bond Fund</u>					
Construction Grants	\$ 10,000,000	\$ -	\$ 10,000,000	0.00%	100.00%
Total Build Illinois Bond Fund	\$ 10,000,000	\$ -	\$ 10,000,000	0.00%	100.00%
<u>U.S. Dept. of Education Jobs Program Federal Trust Fund</u>					
Awards and Grants	\$ 415,397,841	\$ 4,639,789	\$ 410,758,052	1.12%	98.88%
Total U.S. Dept. of Education Jobs Program Fed. Trust Fund	\$ 415,397,841	\$ 4,639,789	\$ 410,758,052	1.12%	98.88%
TOTAL AWARDS AND GRANTS - ALL FUNDS	\$ 11,493,122,152	\$ 1,435,660,155	\$ 10,057,461,997	12.49%	87.51%

ILLINOIS STATE BOARD OF EDUCATION
Comparative Statement of Expenditures to Date (September 30)
Fiscal Years 2011 and 2010

	FY11				FY10			
	Appropriation Amount	Expenditures to Date (Direct)	Federal Indirect Cost Recovery Expenditures	Percentage to Date	Appropriation Amount	Expenditures to Date (Direct)	Federal Indirect Cost Recovery Expenditures	Percentage to Date
All Funds								
Personal Services and Related Expenditures	\$ 43,760,600	\$ 9,597,143	\$ 161,200	22.30%	\$ 43,899,742	\$ 9,780,517	\$ 152,742	22.28%
Contractual Services	30,385,714	3,049,790	68,514	10.26%	28,107,353	3,756,212	40,153	13.36%
Travel	2,369,074	177,635	6,574	7.78%	2,388,444	185,260	8,444	7.76%
Commodities	490,830	12,328	5,830	3.70%	485,000	5,782	-	1.19%
Printing	586,500	-	-	0.00%	591,200	-	-	0.00%
Equipment	704,900	6,246	-	0.89%	769,900	1,950	-	0.25%
Telecommunications	841,681	51,550	7,381	7.00%	952,918	24,434	7,818	2.56%
Operation of Automotive Equipment	23,800	772	-	3.24%	25,000	1,407	-	5.63%
Lump Sums	45,752,200	7,916,744	-	17.30%	75,282,043	1,393,136	-	1.85%
Sub-total	124,915,300	20,812,207	249,500	16.86%	152,501,600	15,148,698	209,157	9.93%
Awards and Grants	11,516,327,141	1,436,528,886	-	12.47%	10,447,962,120	1,568,012,662	-	15.01%
Construction Grants	110,000,000	-	-	0.00%	-	-	-	0.00%
Total All Funds	\$ 11,751,242,441	\$ 1,457,341,093	\$ 249,500	12.40%	\$ 10,600,463,720	\$ 1,583,161,360	\$ 209,157	14.93%
General Revenue Fund								
Personal Services and Related Expenditures	\$ 16,745,700	\$ 4,704,323	\$ -	28.09%	\$ 18,609,100	\$ 4,797,468	\$ -	25.78%
Contractual Services	6,007,200	1,027,427	-	17.10%	6,757,200	2,805,243	-	41.51%
Travel	332,500	40,397	-	12.15%	350,000	48,400	-	13.83%
Commodities	75,000	10,960	-	14.61%	75,000	4,614	-	6.15%
Printing	88,500	-	-	0.00%	93,200	-	-	0.00%
Equipment	88,900	6,246	-	7.03%	153,900	1,950	-	1.27%
Telecommunications	375,300	51,550	-	13.74%	486,100	24,434	-	5.03%
Operation of Automotive Equipment	23,800	772	-	3.24%	25,000	1,407	-	5.63%
Lump Sums	812,500	123,590	-	15.21%	33,602,000	-	-	0.00%
Sub-total	24,549,400	5,965,264	-	24.30%	60,151,500	7,683,516	-	12.77%
Awards and Grants	2,385,806,700	500,803,534	-	20.99%	3,268,694,683	736,094,521	-	22.52%
Total General Revenue Fund	\$ 2,410,356,100	\$ 506,768,798	\$ -	21.02%	\$ 3,328,846,183	\$ 743,778,037	\$ -	22.34%
Other State Funds								
Personal Services and Related Expenditures	\$ 815,400	\$ 42,079	\$ -	5.16%	\$ 209,100	\$ 45,630	\$ -	21.82%
Lump Sums	21,408,900	355,495	-	1.66%	18,108,900	423,071	-	2.34%
Sub-total	22,224,300	397,574	-	1.79%	18,318,000	468,701	-	2.56%
Awards and Grants	4,666,054,700	837,760,742	-	17.95%	3,850,549,600	646,016,463	-	16.78%
Construction Grants	110,000,000	-	-	0.00%	148,518,304	-	-	0.00%
Total Other State Funds	\$ 4,798,279,000	\$ 838,158,315	\$ -	17.47%	\$ 4,017,385,904	\$ 646,485,164	\$ -	16.09%
Federal Funds								
Personal Services and Related Expenditures	\$ 26,038,300	\$ 4,850,741	\$ -	18.63%	\$ 24,928,800	\$ 4,937,419	\$ -	19.81%
Contractual Services	24,310,000	2,022,363	-	8.32%	21,310,000	950,969	-	4.46%
Travel	2,030,000	137,238	-	6.76%	2,030,000	136,860	-	6.74%
Commodities	410,000	1,368	-	0.33%	410,000	1,168	-	0.28%
Printing	498,000	-	-	0.00%	498,000	-	-	0.00%
Equipment	616,000	-	-	0.00%	616,000	-	-	0.00%
Telecommunications	459,000	-	-	0.00%	459,000	-	-	0.00%
Lump Sums	23,780,300	7,687,159	-	32.33%	23,780,300	1,179,222	-	4.96%
Sub-total	78,141,600	14,698,869	-	18.81%	74,032,100	7,205,638	-	9.73%
Awards and Grants	4,464,465,741	97,964,610	-	2.19%	3,328,717,837	185,901,678	-	5.58%
Total Federal Funds	\$ 4,542,607,341	\$ 112,663,479	\$ -	2.48%	\$ 3,402,749,937	\$ 193,107,316	\$ -	5.68%

**ILLINOIS STATE BOARD OF EDUCATION
FINANCIAL STATUS REPORT - 07/01/2010 THROUGH 9/30/2010
FY2011**

	<u>Funded Amount</u>	<u>Expended Year to Date</u>	<u>% Spent Year to Date</u>	<u>September Expenditures</u>	<u>Description</u>
Personal Services and Related	49,875.2	10,003.1	20.1%	3,277.1	Salaries & Benefits
Contractual Services	112,628.9	11,893.7	10.6%	3,710.3	Agency Contracts (see below); Non-Employee Travel; Conferences; Registration Fees
Travel	2,505.8	195.1	7.8%	91.7	Staff Travel
Commodities	735.7	18.7	2.5%	17.2	Supplies; Books
Printing	787.3	0.0	0.0%	0.0	Agency Printing
Equipment	948.3	6.2	0.7%	6.2	Computers; Printers; Furniture
Telecommunications	1,136.6	59.5	5.2%	59.4	Telecommunications Expenses
Auto Operations	23.8	1.0	4.2%	0.0	Operation of Agency Autos
Prompt Payment Act	0.1	0.0	0.0%	0.0	Prompt Payment
Refunds	0.0	0.0	0.0%	0.0	Refunds
Temp. Relocation Revolving Fund	0.0	0.0	0.0%	0.0	Interfund Cash Transfer
Grants	11,447,129.6	1,430,773.8	12.5%	997,790.1	See Detail Below
School Construction Grants	135,000.0	0.0	0.0%	0.0	School Construction Funds

	<u>Funded Amount</u>	<u>Expended Year to Date</u>	<u>% Spent Year to Date</u>	<u>September Expenditures</u>	<u>Description</u>
Agency Contracts Breakdown:					
<u>State Superintendent</u>					
John Perkins					School District Liaison
GRF	79.0	12.3	15.6%	12.3	
University of Illinois					Provide oversight and coordination for on-going and emerging board priorities, advise Superintendent on agencywide matters and perform other tasks and duties as assigned by the State Superintendent
GRF	142.4	23.4	16.4%	23.4	
Illinois State University					Technical assistance and technical support services for the Gates Foundation to align IL Learning Standards and Assessments with college work readiness standards
GRF	170.0	120.0	70.6%	120.0	

	<u>Funded Amount</u>	<u>Expended Year to Date</u>	<u>% Spent Year to Date</u>	<u>September Expenditures</u>	<u>Description</u>
<u>Human Resources</u>					
K & L Gates LLP (formerly Bell, Boyd and Lloyd)					Arbitration matters
GRF	75.0	9.7	12.9%	9.7	
Other State	75.0	0.0	0.0%	0.0	
<u>Administrative Services</u>					
Alzina					Building lease in Springfield
GRF	1,625.2	490.9	30.2%	0.0	
Other State	245.2	3.7	1.5%	0.0	
Federal	881.1	881.1	100.0%	0.0	
Xerox Corp					Copier Maintenance Repairs
GRF	92.5	9.1	9.8%	9.1	
Federal	92.5	7.3	7.9%	7.3	
<u>General Counsel/Legal</u>					
31 Impartial Hearing Officers					Teacher Dismissal Hearing Officers
GRF	124.0	6.6	5.3%	6.6	
Franczek, Sullivan PC					Attorney General's Office appointed Res Vazquez to continue as Legal Counsel for the ongoing implementation and monitoring of the Corey H. consent decree
GRF	120.0	14.2	11.8%	14.2	
Shefsky & Froelich LTD					Prosecution of Educator misconduct cases and any other cases ISBE may request
GRF	250.0	10.6	4.2%	10.6	
Holland & Knight, LLB					American Recovery Reinvestment Act Technical & Legal Assistance
GRF	50.0	19.3	38.6%	19.3	
DeBlasio Law Group					Litigation for recovery of grant funds
GRF	90.0	53.5	59.4%	53.5	
Other State	62.8	0.0	0.0%	0.0	
<u>Data Systems</u>					
IBM					Development of Statewide Student Information System
GRF	675.0	-250.0	-37.0%	120.0	
Federal	1,005.0	260.0	25.9%	260.0	
Utilistar					Data analysis and reporting for Supplemental Education Services
Federal	60.0	0.0	0.0%	0.0	
Ashbaugh & Associates					Project Leader for Child Nutrition System - MY08211
Federal	185.3	29.4	15.9%	14.7	
Capitol Strategies					Programmer for Child Nutrition/ ACES - MY07211
Federal	154.4	32.1	20.8%	13.6	
Capitol Strategies					Programmer for Entity System - MY07212
GRF	153.4	31.9	20.8%	13.2	
Capitol Strategies					Two Programmers for Child Nutrition System - MY08212
Federal	312.7	62.2	19.9%	27.3	
Ashbaugh & Associates					Programmer for Teacher Certification Information System and Educator Certification System MY09212
Other State	156.4	24.4	15.6%	12.1	

	<u>Funded Amount</u>	<u>Expended Year to Date</u>	<u>% Spent Year to Date</u>	<u>September Expenditures</u>	<u>Description</u>
Hupp Information Technologies					Programmer for support of EDFacts/EDEN
Federal	70.9	9.8	13.8%	9.8	
LEAD IT Corporation					Programmer for Attendance & Cost Allocation System - MY10211
GRF	59.8	20.6	34.4%	11.8	(The company name changed - it was formerly Moon Technology Systems)
Other State	13.0	0.0	0.0%	0.0	
Federal	46.7	0.0	0.0%	0.0	
IO Datasphere Inc.					Programmer for Attendance and Cost Allocation System - MY10212
GRF	71.7	31.9	44.5%	13.2	
Other State	15.8	0.0	0.0%	0.0	
Federal	55.9	0.0	0.0%	0.0	
Ashbaugh & Associates					Two programmers for the Special Education Data System - MY11214
Federal	316.7	26.8	8.5%	26.8	
Ashbaugh & Associates					Two programmers for Child Nutrition (CNS), Claim Entry System (ACES) and LAN based Child Nutrition System - MY11211
Federal	288.8	0.0	0.0%	0.0	
LEAD IT Corporation					One programmer for Child Nutrition (CNS), Claim Entry System (ACES) and LAN based Child Nutrition System - MY11212
Federal	119.5	0.0	0.0%	0.0	
Marucco Stoddard, Ferenbach & Walsh (MSF&W)					One lead programmer for Child Nutrition (CNS), Claim Entry System (ACES) and LAN based Child Nutrition System - MY11213
Federal	158.4	0.0	0.0%	0.0	
<u>Technology Support</u>					
Dell Marketing LP					CMS master lease agreement - Third year of a five-year installment purchase agreement for a Storage Area Network, server products and components
GRF	132.4	0.0	0.0%	0.0	
Other State	114.0	0.0	0.0%	0.0	
Federal	76.8	0.0	0.0%	0.0	
<u>Curriculum & Instruction</u>					
IL Caucus for Adolescent Health					HIV Prevention Education Training
Federal	60.0	0.0	0.0%	0.0	
EvalSolutions, Inc.					Evaluation and Research of Illinois Math & Science Partnerships Program
Federal	111.7	0.0	0.0%	0.0	
Sangamon County ROE					Staff support for Illinois Mathematics and Science Partnership Program and Enhancing Education Through Technology as well as other statewide initiatives
Federal	212.7	0.0	0.0%	0.0	
Peoria County ROE					Administer, plan and implement the IL Virtual School (IVS) Program
GRF	1,550.8	450.8	29.1%	110.0	
Federal	19.2	19.2	100.0%	0.0	
Northern Illinois University					A "live data" website for an Illinois Interactive Report Card
GRF	537.1	0.0	0.0%	0.0	
Federal	458.7	0.0	0.0%	0.0	
The Center: Resources for Teaching and Learning					Technical assistance and professional development for the Learn and Serve - K - 12
Federal	111.0	0.0	0.0%	0.0	

	<u>Funded Amount</u>	<u>Expended Year to Date</u>	<u>% Spent Year to Date</u>	<u>September Expenditures</u>	<u>Description</u>
The Center: Resources for Teaching and Learning					Technical assistance with the McKinney-Vento Homeless Education Program
Federal	175.0	0.0	0.0%	0.0	
EvalSolutions, Inc.					External evaluator for the Enhancing Education Through Technology (EETT) program
Federal	237.1	0.0	0.0%	0.0	
Children's Memorial Hospital					Administration of the Youth Risk Behavior Survey which monitors health risk behaviors that contribute to violence, tobacco, drug alcohol, sexual, dietary behaviors and physical activity
Federal	80.0	0.0	0.0%	0.0	
DuPage County ROE					Administration of the Reading First Program
Federal	115.0	97.8	85.0%	0.0	
RMC Research Group					Evaluation for Illinois Striving Readers Program
Other State	149.9	33.3	22.2%	33.3	
Federal	50.0	0.0	0.0%	0.0	
<u>Early Childhood</u>					
Erikson Institute					Early Childhood Evaluation
GRF	300.0	0.0	0.0%	0.0	
Hupp Information Technologies					Programmer for Early Childhood Block Grant Program
GRF	79.0	12.7	16.1%	6.4	
<u>English Language Learning</u>					
Illinois Migrant Council					Support & technical assistance to the Migrant Education Program
Federal	491.0	121.8	24.8%	84.9	
<u>Special Education Services</u>					
11 Hearing Officers					Impartial Hearing Officers in the local-level - Section 14-8.02 of the School Code
Federal	297.0	77.0	25.9%	50.0	
9 Mediation Officers					Special Education mediation services
Federal	90.0	13.6	15.1%	7.7	
Joyce Eckrem					Training and on-going staff development for Due Process Hearing Officers
Federal	135.0	20.8	15.4%	10.4	
Hupp Information Technology					Customize the Special Ed Data Systems and add critical indicators for the mediation process
Federal	140.4	20.7	14.7%	11.6	
ROE # 20					Harrisburg Project - Manage software for special education districts and co-ops
Federal	745.7	237.5	31.8%	56.5	
3 Corey H. CPS Monitors					Corey H. Settlement - Chicago Public Schools Monitors
Federal	60.0	2.6	4.3%	2.6	
Gail Imobersteg					Evaluation of Special Education Impartial Hearing Officers
Federal	50.0	0.0	0.0%	0.0	
Measurement Inc.					Administration of parent surveys for the percentage of parents with children receiving special education services who report that schools facilitated parent involvement which improved services for kids with disabilities
Federal	61.0	0.0	0.0%	0.0	
Loyola University					Assist in implementation of evaluation of special education programs
GRF	156.0	13.0	8.3%	13.0	

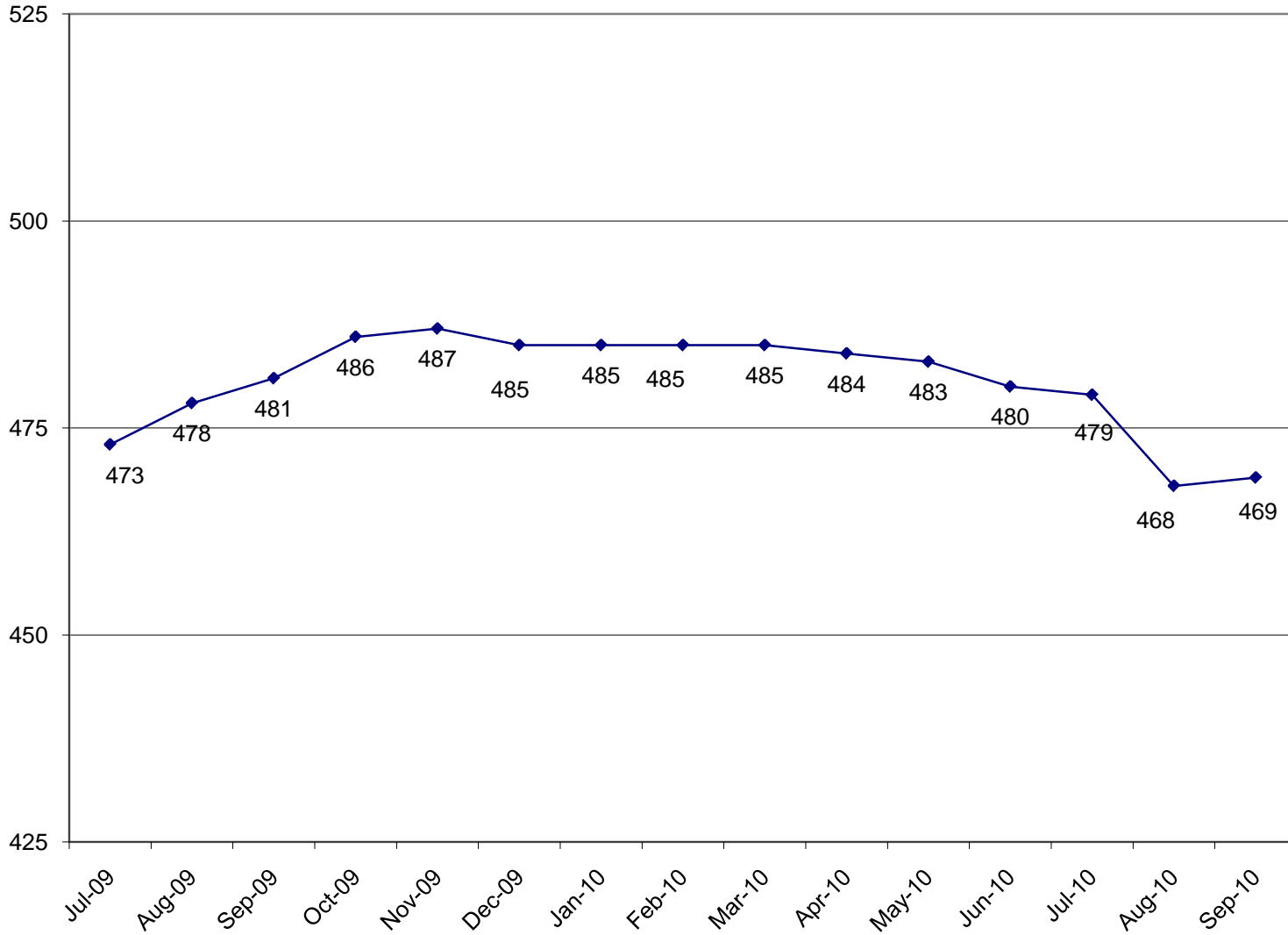
	<u>Funded Amount</u>	<u>Expended Year to Date</u>	<u>% Spent Year to Date</u>	<u>September Expenditures</u>	<u>Description</u>
Alert IT Services Federal	78.0	12.3	15.8%	5.7	ARRA - Job S020 - Special Education Maintenance of Effort
<u>Grants & Programs</u>					
Northern Illinois University Federal	165.0	0.0	0.0%	0.0	Comprehensive external evaluation of the 21st Century Program
Learning Point Associates Federal	500.0	83.3	16.7%	41.7	Statewide technical assistance and monitoring for the 21st Century Program
Academic Development, Inc. Federal	100.7	0.0	0.0%	0.0	Technical assistance to schools/districts in developing evaluations for the content and effectiveness of the parental involvement policy activities and programs for improving the academic quality of schools through the spread of internet technology
Sangamon County ROE Federal	100.0	16.8	16.8%	16.8	Provide services in the review, amendment and approval process of NCLB applications and ARRA Title I applications
University of Memphis Federal	125.3	0.0	0.0%	0.0	Evaluation of the effectiveness of providers for Supplemental Education Services
<u>Assessment</u>					
NCS Pearson (Harcourt) GRF Federal	4,425.0 1,434.8	3.5 1,434.8	0.1% 100.0%	3.5 475.9	Development of the Illinois Standards Achievement Test- MY05647
University of Illinois GRF	250.0	0.0	0.0%	0.0	Evaluation of the large scale assessment and accountability system
NCS Pearson, Inc. Federal	2,585.8	832.0	32.2%	277.3	IAA Test Development (MY066410)
Wisconsin University - WIDA Consortium GRF	4,987.3	0.0	0.0%	0.0	Title III Requirements for the ACCESS test (English Language Learning). Validated through comparative studies
NCS Pearson, Inc. GRF Federal	7,215.7 7,440.0	0.0 5,367.0	0.0% 72.1%	0.0 1,789.0	Administration of the IL Standards Achievement Test MY07645
American College Testing GRF Federal	11,151.8 4,000.0	0.0 0.0	0.0% 0.0%	0.0 0.0	Administration of the Prairie State Achievement Exam (PSAE)
Harte-Hanks Federal	70.0	47.3	67.6%	47.3	Third Party Oversight of all Illinois' Assessments (emergency agreement)
<u>Educator and School Development</u>					
8 Hearing Officers Other State	226.4	3.8	1.7%	0.5	Certification Revocation Hearing Officers
Illinois State University Federal	396.5	0.0	0.0%	0.0	Coordinate work to support of the National Board of Professional Teaching Standards to serve schools

	<u>Funded Amount</u>	<u>Expended Year to Date</u>	<u>% Spent Year to Date</u>	<u>September Expenditures</u>	<u>Description</u>
University of Illinois					Facilitate with ISBE and New Illinois Teacher Collaborative a pilot for the Induction and Mentoring Program
Other State	103.6	0.0	0.0%	0.0	
DuPage County ROE					Provide services for review of applications for the Private Business and Vocational Schools
GRF	50.0	0.0	0.0%	0.0	
University of Memphis					Evaluation of Charter Schools Program
Federal	69.9	0.0	0.0%	0.0	
<u>Standards and Assessments</u>					
Ashbaugh & Associates, Inc.					Provide programmer for the Illinois Longitudinal Data System
Federal	185.9	36.3	19.5%	15.1	
IL Board of Higher Education					Integrate infrastructure and data systems of IBHE and ISBE for IL Longitudinal Data System
Federal	147.0	16.0	10.9%	16.0	
Public Consulting Group					IL Longitudinal Data System Data Architecture
Federal	600.0	100.0	16.7%	50.0	
<u>Fiscal and Procurement</u>					
Workforce Services (Jill Bishop)					Translation of documents from English to other languages
Federal	73.5	0.3	0.4%	0.0	
<u>Funding & Disbursements</u>					
MTW Solutions, LLC					Technical Support for e-Grants System
Federal	60.0	0.0	0.0%	0.0	
<u>Nutrition Programs</u>					
Southern Illinois University					Evaluation and reviews for School Meals Initiative (SMI)
Federal	250.0	0.0	0.0%	0.0	
Legal Resolve, Inc.					Administrative Hearing Officer for Child Care Food Program
Federal	125.0	14.6	11.7%	8.3	
Department of Public Health					Conduct the summer food sanitation inspections
Federal	135.0	0.0	0.0%	0.0	
<u>External Assurance</u>					
BKD LLP					ARRA/General State Aid Audit
GRF	315.8	14.8	4.7%	11.1	
Clifton Gunderson & Co					ARRA/General State Aid Audit
GRF	51.1	0.0	0.0%	0.0	
Crowe Horwath LLP					ARRA/General State Aid Audit
GRF	249.1	33.8	13.6%	21.8	

	<u>Funded Amount</u>	<u>Expended Year to Date</u>	<u>% Spent Year to Date</u>	<u>September Expenditures</u>	<u>Description</u>
Grants Breakdown:					
Advanced Placement Classes	527.0	0.0	0.0%	0.0	Grants
Advanced Placement Fee	2,000.0	0.0	0.0%	0.0	Fee reimbursement for Adv Placement Exam and Int'l Baccalaureate exam
After School Matters	4,000.0	0.0	0.0%	0.0	Grant to After School Matters
Agriculture Education	1,947.6	21.4	1.1%	21.4	Grants to school districts
Alternative Ed/Reg Safe Schools	9,341.9	0.0	0.0%	0.0	Formula
Arts & Foreign Language	1,280.0	0.0	0.0%	0.0	Grants
Autism Training & Tech Assist.	100.0	0.0	0.0%	0.0	Grants to the IL Autism Training & Tech Assistance Program
Bilingual Education	63,381.2	0.0	0.0%	0.0	Mandated Categorical
Capital Development Fund	25,000.0	0.0	0.0%	0.0	Grants to School Districts
Charter Schools - Federal	9,000.0	223.8	2.5%	223.8	Competitive
Charter Schools-Rev Loan Fund	20.0	0.0	0.0%	0.0	Other/Repayment of loans
Child Nutrition	725,000.0	37,376.4	5.2%	29,483.9	Formula - Reimbursement
Child Nutrition - ARRA	3,657.3	0.0	0.0%	0.0	Formula - Federal Stimulus
Children's Mental Health Partner	1,464.0	0.0	0.0%	0.0	Grants
Congressional Earmarks	5,000.0	0.0	0.0%	0.0	Grants
Deaf/Blind	450.0	32.4	7.2%	32.4	Grant to Philip J. Rock Center
Driver Education	24,229.6	6,057.4	25.0%	6,057.4	Reimbursement
Early Childhood Block	340,393.3	61,317.9	18.0%	61,317.9	Block grant for Pre-K, parent training and prevention initiative
Education Jobs Fund	415,397.8	0.0	0.0%	0.0	Grants
Emergency Financial Assistance	1,000.0	0.0	0.0%	0.0	Formula and loans to school districts
General State Aid	4,600,305.1	829,575.5	18.0%	414,226.3	Formula
IDEA	650,000.0	9,331.4	1.4%	8,371.6	Formula
IDEA - Flow Through ARRA	506,479.8	8,785.6	1.7%	8,785.6	Formula - Federal Stimulus
IDEA Model Outreach	400.0	0.0	0.0%	0.0	Competitive
IDEA Part D	3,200.0	165.1	5.2%	165.1	Reimbursement
Learn & Serve America	2,500.0	38.2	1.5%	38.2	Competitive grants
Mat'ls for the Visually Impaired	1,421.1	405.0	28.5%	405.0	Targeted Init. - with The Chicago Lighthouse for People who are Blind or Visually Impaired
McKinney Homeless Ed	3,500.0	0.0	0.0%	0.0	Competitive grants to school districts
McKinney Homeless Ed - ARRA	2,581.6	0.0	0.0%	0.0	Formula - Federal Stimulus
Mental Health - Federal	400.0	0.0	0.0%	0.0	Grant
Nat'l Board Certification	2,756.4	0.0	0.0%	0.0	Grants
ONPAR	2,000.0	0.0	0.0%	0.0	Grant
Orphanage Tuition	13,000.0	2,952.8	22.7%	2,308.0	Reimbursement to school districts for children residing in orphanages
Philip Rock Center	3,577.8	600.0	16.8%	600.0	Targeted Initiative
Preschool - Spec Ed	25,000.0	1,295.7	5.2%	934.0	Formula - special education, 3-5 year-olds
Preschool - Spec Ed - ARRA	18,311.5	112.6	0.6%	112.6	Formula - Federal Stimulus
Reading Imp. Block Grant	68,525.7	0.0	0.0%	0.0	Formula
Recording - Blind and Dyslexic	816.6	0.0	0.0%	0.0	Grant to increase achievement of students with visual impairments
Re-Enrolling Student Program	3,600.0	0.0	0.0%	0.0	Grant to Alternative Schools Network
Reorg Incentive Feasibility Stdy	300.0	0.0	0.0%	0.0	Grants
Reorganization Incentive	3,400.0	3,228.6	95.0%	3,228.6	Grants to districts to encourage reorganization through consolidation/annexation
Response to Intervention	972.0	0.0	0.0%	0.0	Grants
ROE Bus Driver Training	70.0	70.0	100.0%	70.0	ROE Bus Driver Training
ROE Salaries	9,100.0	2,127.9	23.4%	717.4	Salaries for ROE's
ROE School Services	4,271.5	1,050.9	24.6%	811.9	Formula - ROE Operations

	<u>Funded Amount</u>	<u>Expended Year to Date</u>	<u>% Spent Year to Date</u>	<u>September Expenditures</u>	<u>Description</u>
School Tech. Rev. Loan	5,000.0	0.0	0.0%	0.0	Loans to schools to implement technology
Spec Ed Extraordinary	334,236.8	59,159.9	17.7%	59,159.9	Mandated Categorical-Supplemental
Spec Ed Orphanage	120,200.0	46,360.1	38.6%	46,360.1	Formula
Spec Ed Personnel	459,600.0	92,522.0	20.1%	92,522.0	Formula
Spec Ed Private Facility Tuition	181,100.0	71,052.3	39.2%	71,052.3	Formula
Spec Ed Summer School	11,700.0	6,364.8	54.4%	6,364.8	Formula - Special ed students enrolled in summer sessions
Spec. Congressional Initiatives	4,220.5	0.0	0.0%	0.0	Grants
Standards Assessment & Acct	1,002.8	0.0	0.0%	0.0	Grants for K-6 Arts, Learn Improve, Learning Standards, Student/Teacher Assessment
State Free Lunch and Breakfast	26,300.0	13,723.4	52.2%	13,677.0	Mandated Categorical - Reimbursement
Striving Readers	1,500.0	0.0	0.0%	0.0	Grants
Supervisory Expense	102.0	0.0	0.0%	0.0	Supervisory Expense
Tax Equivalent Grants	222.6	222.6	100.0%	222.6	Grants
Teachers/Admin. Mentoring	5,628.0	107.2	1.9%	107.2	Grants
Technology for Success -State	1,785.0	350.4	19.6%	350.4	Grants
Technology Literacy	20,000.0	1,377.7	6.9%	1,377.7	Competitive and non-competitive grants to school districts
Technology Literacy - ARRA	26,523.2	1,346.0	5.1%	623.7	Competitive - federal Stimulus
Temporary Relocation	1,400.0	0.0	0.0%	0.0	Formula grants for school emergency relocation
Title I - Low Income	750,000.0	14,000.8	1.9%	12,731.2	Formula
Title I - Low Income - ARRA	544,464.5	1,274.0	0.2%	1,274.0	Formula - Federal Stimulus
Title I - Reading First	20,000.0	4,565.9	22.8%	4,565.9	Competitive and formula grants
Title II - Teacher Quality	135,000.0	3,971.5	2.9%	3,623.8	Formula
Title II Math/Science Partnerships	12,000.0	663.7	5.5%	663.7	Formula
Title III - English Language Acq	40,000.0	42.5	0.1%	42.5	Grant
Title IV - 21st Century	55,000.0	1,298.1	2.4%	1,298.1	Competitive
Title IV - Safe and Drug Free	15,000.0	23.1	0.2%	23.1	Formula
Title VI-Flex. & Acct Rural Education	2,000.0	0.0	0.0%	0.0	Grants to school districts
Transition to Teaching	300.0	0.0	0.0%	0.0	Grant to Illinois Resource Center
Transportation Reg/Voc	270,009.7	57,249.0	21.2%	57,249.0	Formula
Transportation Spec Ed	429,700.0	70,235.7	16.3%	70,235.7	Formula
Truant/Dropout/Optional Education	14,059.0	3,767.8	26.8%	3,767.8	Competitive - at-risk students/dropout prevention
Voc Ed - Federal	55,000.0	7,008.2	12.7%	6,891.1	Formula and Competitive - to improve student academic and career skills
Voc Ed - Federal Tech Prep	5,000.0	135.8	2.7%	135.8	Grants - assists students in achieving learning/occupational skills standards
Vocational Education - State	38,562.1	9,182.7	23.8%	5,559.6	Formula

**ILLINOIS STATE BOARD OF EDUCATION
HEADCOUNT AS OF SEPTEMBER
2010**



**ILLINOIS STATE BOARD OF EDUCATION
AGENCY STAFF DETAIL AS OF SEPTEMBER 2010**

	Mgmt.	Prof.	Support	GRF	Non-GRF	Total
SUPERINTENDENT'S OFFICE						
State Superintendent	1	0	3	4	0	4
Board Services	0	1	1	2	0	2
General Counsel	2	10	2	13	1	14
Governmental Relations	0	2	0	2	0	2
Internal Audit	<u>1</u>	<u>0</u>	<u>1</u>	<u>2</u>	<u>0</u>	<u>2</u>
Sub-Total	4	13	7	23	1	24
HUMAN RESOURCES						
Human Resources	<u>3</u>	<u>5</u>	<u>6</u>	<u>13</u>	<u>1</u>	<u>14</u>
Sub-Total	3	5	6	13	1	14
PUBLIC INFORMATION						
Public Information	<u>1</u>	<u>5</u>	<u>1</u>	<u>6</u>	<u>1</u>	<u>7</u>
Sub-Total	1	5	1	6	1	7
SPECIAL EDUCATION SERVICES						
Special Education Admin.	1	0	1	0	2	2
Special Education Services - Spfld.	2	29	6	0	37	37
Special Education Services - Chgo.	<u>1</u>	<u>18</u>	<u>1</u>	<u>0</u>	<u>20</u>	<u>20</u>
Sub-Total	4	47	8	0	59	59
EDUCATIONAL PROGRAMS						
Career & Technical Education	1	8	2	8	3	11
Early Childhood	1	8	2	7	4	11
English Language Learning	1	8	1	4	6	10
Innovation and Improvement	<u>3</u>	<u>17</u>	<u>4</u>	<u>2</u>	<u>22</u>	<u>24</u>
Sub-Total	6	41	9	21	35	56
STANDARDS & ASSESSMENTS						
Standards & Assessment Admin.	1	2	1	2	2	4
Data Analysis & Progress Reporting	1	8	2	10	1	11
Assessment	2	12	2	7	9	16
Curriculum & Instruction	<u>2</u>	<u>11</u>	<u>4</u>	<u>11</u>	<u>6</u>	<u>17</u>
	6	33	9	30	18	48

	Mgmt.	Prof.	Support	GRF	Non-GRF	Total
SCHOOL SUPPORT SERVICES FOR ALL SCHOOLS						
School Support Admin	1	0	1	2	0	2
Educator Certification	1	9	13	22	1	23
Educator & School Development	2	13	8	20	3	23
Nutrition Programs	<u>2</u>	<u>38</u>	<u>5</u>	<u>0</u>	<u>45</u>	<u>45</u>
	6	60	27	44	49	93
FISCAL SUPPORT SERVICES						
Fiscal Support Services Admin.	1	0	0	1	0	1
Budget & Financial Management	1	4	1	6	0	6
Data Systems	3	30	2	32	3	35
Technology Support	1	19	2	21	1	22
Fiscal & Procurement	2	11	5	17	1	18
Administrative Services	1	3	13	17	0	17
Funding and Disbursements	2	20	7	12	17	29
School Business Services	2	14	3	18	1	19
External Assurance	<u>2</u>	<u>17</u>	<u>2</u>	<u>8</u>	<u>13</u>	<u>21</u>
Sub-Total	15	118	35	132	36	168
GRAND TOTAL, ALL CENTERS	45	322	102	269	200	469
	10%	69%	22%	57%	43%	100%

ILLINOIS STATE BOARD OF EDUCATION
Personnel Transactions As of September 2010

Transaction Data:

	<u>FY02</u>	<u>FY03</u>	<u>FY04</u>	<u>FY05</u>	<u>FY06</u>	<u>FY07</u>	<u>FY08</u>	<u>FY09</u>	<u>FY10</u>	<u>FY11</u>
Begin Year	739	650	522	471	487	478	463	475	473	480
Hire Externally	5	29	20	77	37	44	54	30	51	2
Recall	0	11	19	4	4	0	1	1	0	0
Retire	-37	-128	-34	-30	-25	-20	-19	-15	-25	-3
Resign	-21	-13	-24	-31	-17	-33	-19	-12	-12	-10
Discharge	-9	-2	-2	-4	-7	-5	-4	-5	-7	0
Layoff	-25	-22	-30	0	0	0	0	0	0	0
Death	-2	-3	0	0	-1	-1	0	0	0	0
Other	<u>0</u>	<u>0</u>	<u>0</u>	<u>0</u>	<u>0</u>	<u>0</u>	<u>-1</u>	<u>-1</u>	<u>0</u>	<u>0</u>
End Year	650	522	471	487	478	463	475	473	480	469