

ILLINOIS STATE BOARD OF EDUCATION MEETING
April 18, 2012

TO: Illinois State Board of Education

FROM: Christopher A. Koch, Ed.D., State Superintendent of Education 
Linda Riley Mitchell, Chief Financial Officer 
Donald W. Evans, Director of Human Resources 

Agenda Topic: Information Item: SBE Fiscal & Administrative Monthly Reports

Materials: Appropriations and Spending by Program –FY12
Financial Status Report (contract & grant detail) – FY12
Contract & Grant Awards Under \$1 million – FY12
Comparative Statement of Expenditures – FY12
Monthly Headcount Graph, Staff Detail, Personnel Transactions

Purpose of Agenda Item

To provide the Board standard reports with key information on fiscal and administrative activities of the state Agency.

Relationship to/Implications for the State Board's Strategic Plan

Not applicable – informational item only.

Expected Outcome(s) of Agenda Item

Not applicable – informational item only.

Background Information

In June 2002, the State Board adopted bylaws outlining a new committee structure under which fiscal, audit and operations issues will be handled by the Finance and Audit Committee. The Superintendent requested that the Agency organize and standardize the financial and headcount data provided to the Board for their future policy work and decision making.

Currently, the following reports are provided:

1. Budget/Annual Report (annually in January)
2. Condition of Public Education (December)
3. Comptroller SEA Report (annually in February)
4. Appropriation and Expenditure (monthly)
5. Financial Status Report – Contract/Grant Detail (monthly)
6. Contract & Grant Awards Under \$1 Million (monthly)
7. Comparative Statement of Expenditures (monthly)
8. Headcount Reports (monthly)
Personnel Transactions, Staff Detail by Division, & Monthly Headcount Graph

Analysis and Implications for Policy, Budget, Legislative Action and Communications

The monthly or Quarterly Fiscal and Headcount Reports were first provided to the Board in August 2002. These reports provide information regarding staffing and funding as well as details of contracts over \$50,000 and grants the Agency is processing.

At the request of the Board at the December 2011 meeting, a Contract & Grant Award Report under \$1 million has been added to the SBE Fiscal & Administrative Monthly Reports package.

All contracts and grants totaling over \$1 million are reviewed at the Board level. Included in this month's review are:

- Renewal of Intergovernmental Agreement: World-Class Innovations in Developing Assessment (WIDA) Consortium for the ACCESS Assessment for English Language Learners (ELLs)
- Request to Release RFSP for 21st CCLC Technical Assistance
- Contract Renewal: Illinois State University for Illinois National Board Professional Preparation and Support System
- Contract Renewal: Harrisburg Project
- Contract Renewal: Illinois Resource Center for ELL Technical Assistance and Professional Development
- Contract Renewal: Illinois Migrant Council for Technical Assistance and Professional Development
- Continuation Grant Agreement with the University of Illinois for Illinois Early Childhood Asset Map (IECAM)
- Grant Agreement Renewal with the University of Illinois for Illinois Early Learning Project
- RFP for Grant Agreement for Illinois Early Learning Project
- Contract Award for Illinois Kindergarten Individual Development Survey (KIDS)
- Request to Release RFSP for Local Assessment Support Management Entity
- Amendment to FY 12 Intergovernmental Agreement with Northern Illinois University for Illinois Interactive Report Card (IIRC)
- FY 13 Intergovernmental Agreement with Northern Illinois University for Illinois Interactive Report Card (IIRC)

Superintendent's Recommendation

None needed.

Next Steps

Continue to provide these reports pursuant to the schedule above.

Illinois State Board of Education
2012 Appropriation & Spending by Program 07/01/2011 thru 03/31/2012
(Dollars in Thousands)

Initiatives	Appropriation			YTD Expenditures		
	Total	Grants	Admin	Total	Grants	Admin
STATE						
Distributive Grants	<u>\$6,231,532.8</u>	<u>\$6,231,532.8</u>	<u>\$0.0</u>	<u>\$4,712,374.2</u>	<u>\$4,712,374.2</u>	<u>\$0.0</u>
General State Aid	\$4,448,104.5	\$4,448,104.5	\$0.0	\$3,411,333.8	\$3,411,333.8	\$0.0
District Consolidation Cost	\$1,800.0	\$1,800.0	\$0.0	\$1,593.0	\$1,593.0	\$0.0
Mandated Categoricals	<u>\$1,781,628.3</u>	<u>\$1,781,628.3</u>	<u>\$0.0</u>	<u>\$1,299,447.3</u>	<u>\$1,299,447.3</u>	<u>\$0.0</u>
Illinois Free Lunch/Breakfast	\$26,300.0	\$26,300.0	\$0.0	\$21,182.1	\$21,182.1	\$0.0
Orphanage Tuition 18-3 (Reg Ed)	\$13,000.0	\$13,000.0	\$0.0	\$6,838.8	\$6,838.8	\$0.0
Sp-Ed - Extraordinary Services	\$343,375.7	\$343,375.7	\$0.0	\$282,598.2	\$282,598.2	\$0.0
Sp-Ed - Orphanage Tuition 14-7.03	\$101,700.0	\$101,700.0	\$0.0	\$66,760.4	\$66,760.4	\$0.0
Sp-Ed - Personnel Reimbursement	\$465,700.0	\$465,700.0	\$0.0	\$360,901.8	\$360,901.8	\$0.0
Sp-Ed - Private Tuition	\$177,743.7	\$177,743.7	\$0.0	\$154,814.8	\$154,814.8	\$0.0
Sp-Ed - Summer School	\$11,200.0	\$11,200.0	\$0.0	\$10,750.0	\$10,750.0	\$0.0
Sp-Ed - Transportation	\$436,800.0	\$436,800.0	\$0.0	\$239,251.3	\$239,251.3	\$0.0
Transportation - Regular/Vocational	\$205,808.9	\$205,808.9	\$0.0	\$156,350.0	\$156,350.0	\$0.0
Standards - Assessment & Accountability	<u>\$26,000.0</u>	<u>\$0.0</u>	<u>\$26,000.0</u>	<u>\$7,658.7</u>	<u>\$0.0</u>	<u>\$7,658.7</u>
Assessments	\$24,000.0	\$0.0	\$24,000.0	\$7,633.7	\$0.0	\$7,633.7
Standards, Materials, Training for Teachers	\$2,000.0	\$0.0	\$2,000.0	\$25.0	\$0.0	\$25.0
Growth Model	\$0.0	\$0.0	\$0.0	\$0.0	\$0.0	\$0.0
System of Support	\$0.0	\$0.0	\$0.0	\$0.0	\$0.0	\$0.0
Ensuring Quality Ed Personnel	<u>\$2,225.0</u>	<u>\$2,225.0</u>	<u>\$0.0</u>	<u>\$586.9</u>	<u>\$586.9</u>	<u>\$0.0</u>
National Board Certification	\$1,000.0	\$1,000.0	\$0.0	\$0.0	\$0.0	\$0.0
Principal Mentoring Program	\$0.0	\$0.0	\$0.0	\$0.0	\$0.0	\$0.0
Teach for America	\$1,225.0	\$1,225.0	\$0.0	\$586.9	\$586.9	\$0.0
Teacher and Admin. Mentoring Program	\$0.0	\$0.0	\$0.0	\$0.0	\$0.0	\$0.0
Early Childhood	<u>\$325,123.5</u>	<u>\$320,573.7</u>	<u>\$4,549.8</u>	<u>\$232,052.0</u>	<u>\$229,882.4</u>	<u>\$2,169.6</u>
Academic Difficulty	<u>\$86,782.1</u>	<u>\$85,898.7</u>	<u>\$883.4</u>	<u>\$36,574.8</u>	<u>\$36,430.1</u>	<u>\$144.7</u>
Alternative Learning/Regional Safe Schools	\$9,341.9	\$9,341.9	\$0.0	\$7,132.7	\$7,132.7	\$0.0
Bilingual Education	\$63,381.2	\$62,497.8	\$883.4	\$18,192.7	\$18,047.9	\$144.7
Truant Alternative Optional Education	\$14,059.0	\$14,059.0	\$0.0	\$11,249.5	\$11,249.5	\$0.0

Initiatives	Appropriation			YTD Expenditures		
	Total	Grants	Admin	Total	Grants	Admin
Learning Technologies	<u>\$3,000.0</u>	<u>\$1,800.0</u>	<u>\$1,200.0</u>	<u>\$2,203.4</u>	<u>\$1,403.4</u>	<u>\$800.0</u>
Technology for Success	\$3,000.0	\$1,800.0	\$1,200.0	\$2,203.4	\$1,403.4	\$800.0
Career Preparation	<u>\$40,362.1</u>	<u>\$40,362.1</u>	<u>\$0.0</u>	<u>\$33,283.6</u>	<u>\$33,283.6</u>	<u>\$0.0</u>
Agricultural Education	\$1,800.0	\$1,800.0	\$0.0	\$1,429.4	\$1,429.4	\$0.0
Career and Technical Education	\$38,562.1	\$38,562.1	\$0.0	\$31,854.2	\$31,854.2	\$0.0
Regional Services	<u>\$13,101.5</u>	<u>\$13,012.2</u>	<u>\$89.3</u>	<u>\$8,349.2</u>	<u>\$8,349.2</u>	<u>\$0.0</u>
ROE - Bus Driver Training	\$70.0	\$70.0	\$0.0	\$70.0	\$70.0	\$0.0
ROE - Salaries	\$10,806.4	\$10,806.4	\$0.0	\$6,854.9	\$6,854.9	\$0.0
ROE - School Services	\$2,225.1	\$2,135.8	\$89.3	\$1,424.3	\$1,424.3	\$0.0
Strategic Plan	<u>\$100.0</u>	<u>\$0.0</u>	<u>\$100.0</u>	<u>\$80.0</u>	<u>\$0.0</u>	<u>\$80.0</u>
Strategic Plan	\$100.0	\$0.0	\$100.0	\$80.0	\$0.0	\$80.0
Administration	<u>\$22,154.0</u>	<u>\$0.0</u>	<u>\$22,154.0</u>	<u>\$14,994.1</u>	<u>\$0.0</u>	<u>\$14,994.1</u>
Targeted Initiatives	<u>\$13,037.2</u>	<u>\$12,044.9</u>	<u>\$992.3</u>	<u>\$8,444.9</u>	<u>\$7,962.1</u>	<u>\$482.8</u>
Advanced Placement Classes	\$0.0	\$0.0	\$0.0	\$0.0	\$0.0	\$0.0
After School Matters	\$2,500.0	\$2,500.0	\$0.0	\$1,020.0	\$1,020.0	\$0.0
Arts and Foreign Language	\$1,000.0	\$1,000.0	\$0.0	\$662.8	\$662.8	\$0.0
Autism Project	\$100.0	\$100.0	\$0.0	\$77.8	\$77.8	\$0.0
Blind & Dyslexic	\$816.6	\$816.6	\$0.0	\$816.6	\$816.6	\$0.0
Childrens Mental Health Partnership	\$1,620.0	\$1,458.0	\$162.0	\$1,223.4	\$1,187.3	\$36.1
Community Residential Services Authority	\$592.3	\$0.0	\$592.3	\$354.1	\$0.0	\$354.1
Educator Misconduct Investigations	\$184.0	\$0.0	\$184.0	\$91.8	\$0.0	\$91.8
Lowest Performing Schools	\$1,002.8	\$948.8	\$54.0	\$0.9	\$0.0	\$0.9
Materials Center for the Visually Impaired	\$1,421.1	\$1,421.1	\$0.0	\$1,075.0	\$1,075.0	\$0.0
Philip J. Rock Center & School	\$3,577.8	\$3,577.8	\$0.0	\$2,900.0	\$2,900.0	\$0.0
Response to Intervention	\$0.0	\$0.0	\$0.0	\$0.0	\$0.0	\$0.0
Tax Equivalent Grants	\$222.6	\$222.6	\$0.0	\$222.6	\$222.6	\$0.0
NON STATE						
School Infrastructure Fund	<u>\$726.8</u>	<u>\$0.0</u>	<u>\$726.8</u>	<u>\$410.2</u>	<u>\$0.0</u>	<u>\$410.2</u>
School Infrastructure (Debt Admin)	\$726.8	\$0.0	\$726.8	\$410.2	\$0.0	\$410.2
Driver Education	<u>\$24,325.2</u>	<u>\$24,229.6</u>	<u>\$95.6</u>	<u>\$18,175.5</u>	<u>\$18,172.2</u>	<u>\$3.3</u>
Other Funds	<u>\$155,288.9</u>	<u>\$133,880.0</u>	<u>\$21,398.9</u>	<u>\$5,248.7</u>	<u>\$1,643.3</u>	<u>\$3,605.4</u>
Capital Development Fund-Sch Const.	\$25,000.0	\$25,000.0	\$0.0	\$0.0	\$0.0	\$0.0
Charter Schools Revolving Loan Fund	\$20.0	\$20.0	\$0.0	\$0.0	\$0.0	\$0.0

Initiatives	Appropriation			YTD Expenditures		
	Total	Grants	Admin	Total	Grants	Admin
Emergency Financial Assistance Fund	\$1,000.0	\$1,000.0	\$0.0	\$0.0	\$0.0	\$0.0
Indirect Costs	\$7,015.2	\$0.0	\$7,015.2	\$2,626.4	\$0.0	\$2,626.4
ISBE - Special Purpose Trust Fund	\$8,255.5	\$0.0	\$8,245.5	\$471.0	\$0.0	\$471.0
ISBE Teacher Certificate Institute Fund	\$2,208.9	\$0.0	\$2,208.9	\$2.6	\$0.0	\$2.6
School Construction Maintenance Fund	\$100,000.0	\$100,000.0	\$0.0	\$0.0	\$0.0	\$0.0
School Technology Revolving Loan	\$5,000.0	\$5,000.0	\$0.0	\$603.0	\$603.0	\$0.0
Teacher Certification Fee Revolving Fund	\$3,700.0	\$0.0	\$3,700.0	\$505.4	\$0.0	\$505.4
Technology Immersion - Build IL Bond Fund	\$1,689.3	\$1,460.0	\$229.3	\$1,040.3	\$1,040.3	\$0.0
Temporary Relocation Revolving Fund	\$1,400.0	\$1,400.0	\$0.0	\$0.0	\$0.0	\$0.0

FEDERAL

Federal Funds	<u>\$3,673,635.7</u>	<u>\$3,529,835.7</u>	<u>\$143,998.6</u>	<u>\$1,181,055.6</u>	<u>\$1,140,965.8</u>	<u>\$40,089.8</u>
Advanced Placement Fee Payment	\$3,099.1	\$3,000.0	\$99.1	\$1,872.6	\$1,872.6	\$0.0
ARRA - Child Nutrition Sch Lunch Equipment	\$914.3	\$914.3	\$0.0	\$0.0	\$0.0	\$0.0
ARRA - Education Jobs Fund	\$163,000.0	\$163,000.0	\$0.0	\$87,480.3	\$87,480.3	\$0.0
ARRA - IDEA - Part B	\$354,535.9	\$354,535.9	\$0.0	\$31,752.0	\$31,752.0	\$0.0
ARRA - IDEA - Pre-School	\$12,818.0	\$12,818.0	\$0.0	\$838.8	\$838.8	\$0.0
ARRA - Longitudinal Data Systems	\$7,300.0	\$0.0	\$7,300.0	\$1,389.1	\$0.0	\$1,389.1
ARRA - McKinney Homeless	\$645.4	\$645.4	\$0.0	\$26.1	\$26.1	\$0.0
ARRA - Race to the Top	\$50,000.0	\$0.0	\$50,000.0	\$750.1	\$0.0	\$750.1
ARRA - Title I	\$139,102.2	\$139,102.2	\$0.0	\$20,854.1	\$20,854.1	\$0.0
ARRA - Titel I School Improvement (1003G)	\$242,023.0	\$242,023.0	\$0.0	\$12,477.5	\$12,477.5	\$0.0
ARRA - Title II Technology	\$18,566.2	\$17,739.1	\$827.1	\$1,640.7	\$1,327.2	\$313.6
Career & Technical Education	\$56,387.9	\$55,000.0	\$1,387.9	\$18,230.5	\$17,656.1	\$574.4
Career & Technical Education - Technical Prep	\$5,177.0	\$5,000.0	\$177.0	\$12.1	\$10.0	\$2.1
Charter Schools	\$9,131.5	\$9,000.0	\$131.5	\$488.4	\$488.4	\$0.0
Child Nutrition	\$735,671.4	\$725,000.0	\$10,870.1	\$420,422.3	\$415,241.0	\$5,181.3
IDEA - Deaf Blind, Part C	\$450.0	\$450.0	\$0.0	\$205.6	\$205.6	\$0.0
IDEA - Improvement Plan	\$4,199.3	\$3,700.0	\$499.3	\$918.9	\$811.2	\$107.7
IDEA - Model Outreach	\$400.0	\$400.0	\$0.0	\$0.0	\$0.0	\$0.0
IDEA - Pre-School	\$25,992.9	\$25,000.0	\$992.9	\$7,837.5	\$7,544.4	\$293.1
Illinois Purchase Care Review Board	\$379.2	\$0.0	\$379.2	\$253.2	\$0.0	\$253.2
Individuals with Disabilities Educ. Act, Pt. B	\$666,187.4	\$650,000.0	\$16,187.4	\$264,156.4	\$257,242.2	\$6,914.2
Individuals with Disabilities Educ. Act, Pt. B	\$40.0	\$0.0	\$40.0	\$4.3	\$0.0	\$4.3
Integration of Schools & Mental Health Systems	\$0.0	\$0.0	\$0.0	\$0.0	\$0.0	\$0.0
Learn and Serve America	\$2,550.0	\$2,500.0	\$50.0	\$102.1	\$94.1	\$8.0
Longitudinal Data System	\$8,900.0	\$4,983.5	\$3,916.5	\$619.7	\$0.0	\$619.7
Math & Science Partnerships	\$12,715.5	\$12,000.0	\$715.5	\$1,343.4	\$1,240.8	\$102.6
National Center for Education Statistics	\$221.6	\$0.0	\$221.6	\$113.6	\$0.0	\$113.6
ONPAR	\$2,000.0	\$2,000.0	\$0.0	\$0.0	\$0.0	\$0.0
Refugee	\$0.0	\$0.0	\$0.0	\$0.0	\$0.0	\$0.0

Initiatives	Appropriation			YTD Expenditures		
	Total	Grants	Admin	Total	Grants	Admin
Spanish Language Assessment-SALSA	\$1,818.8	\$0.0	\$1,818.8	\$44.8	\$0.0	\$44.8
School Health Programs	\$1,095.7	\$0.0	\$1,095.7	\$142.2	\$0.0	\$142.2
Special Congressional Initiatives	\$2,000.0	\$1,870.5	\$129.5	\$29.3	\$0.0	\$29.3
Striving Readers	\$50,000.0	\$49,653.9	\$346.1	\$103.2	\$30.2	\$73.0
Title I - Basic Programs	\$685,058.2	\$673,465.1	\$11,593.1	\$225,020.3	\$221,427.6	\$3,592.7
Title I - Comprehensive School Reform	\$35.5	\$0.0	\$35.5	\$0.0	\$0.0	\$0.0
Title I - Education of Migratory Children	\$4,044.9	\$3,976.7	\$68.2	\$728.1	\$713.1	\$15.0
Title I - Even Start Family Literacy Programs	\$3,151.9	\$2,933.2	\$218.7	\$77.0	\$77.0	\$0.0
Title I - Neglected and Delinquent	\$1,202.9	\$1,172.1	\$30.8	\$225.4	\$207.0	\$18.4
Title I - Reading First	\$0.0	\$0.0	\$0.0	\$0.0	\$0.0	\$0.0
Title I - School Improvement	\$71,110.0	\$68,452.9	\$2,657.1	\$8,782.7	\$8,334.0	\$448.7
Title II - Enhance Ed through Technology	\$20,892.7	\$20,000.0	\$892.7	\$206.2	\$152.4	\$53.8
Title II - Quality Teachers	\$161,383.8	\$157,000.0	\$4,383.8	\$32,437.7	\$31,737.6	\$700.1
Title III - English Language Acquisition	\$42,133.4	\$40,000.0	\$2,133.4	\$5,128.6	\$4,665.7	\$462.9
Title IV - 21st Century Schools	\$62,268.5	\$60,500.0	\$1,768.5	\$15,429.0	\$14,486.9	\$942.1
Title IV - Safe & Drug Free Schools	\$15,538.9	\$15,000.0	\$538.9	\$499.6	\$22.5	\$477.1
Title V - Innovative Programs	\$0.0	\$0.0	\$0.0	\$0.0	\$0.0	\$0.0
Title VI - Rural & Low Income Programs	\$2,051.0	\$2,000.0	\$51.0	\$487.8	\$479.6	\$8.2
Title VI - State Assessment	\$21,961.5	\$0.0	\$21,961.5	\$16,255.0	\$0.0	\$16,255.0
Title X - McKinney Homeless Assistance	\$5,464.7	\$5,000.0	\$464.7	\$1,669.6	\$1,469.9	\$199.8
Transition to Teaching	\$15.6	\$0.0	\$15.6	\$0.0	\$0.0	\$0.0
TOTAL - ALL FUNDS:	\$10,617,394.6	\$10,395,394.6	\$222,188.7	\$6,261,491.9	\$6,191,053.2	\$70,438.6

Illinois State Board of Education
 Contract Awards
 March 1, 2012 through March 31, 2012

Vendor	Illinois Procurement Bulletin Award Notice	Type of Award	Term	Contract Term Amount	Description
Franczek Radelet	n/a	Contract Amendment	3/19/12-6/30/12	\$ 10,000	Provide specialized counsel regarding any and all matters required in the matter of Corey H. v. Board of Education of the City of Chicago.
Robert Agosto	3/19/2012	Contract Renewal	7/1/12-6/30/13	\$ 43,358	Conduct certification revocation hearings, appeals of certificate suspensions, and other required hearings/appeals involving teacher/administration certifications
Matthew E. Franklin	3/19/2012	Contract Renewal	7/1/12-6/30/13	\$ 45,156	Conduct certification revocation hearings, appeals of certificate suspensions, and other required hearings/appeals involving teacher/administration certifications
Carrie Belle Washington	3/19/2012	Contract Renewal	7/1/12-6/30/13	\$ 45,506	Conduct certification revocation hearings, appeals of certificate suspensions, and other required hearings/appeals involving teacher/administration certifications
Buford Law Office	3/19/2012	Contract Renewal	7/1/12-6/30/13	\$ 46,300	Conduct certification revocation hearings, appeals of certificate suspensions, and other required hearings/appeals involving teacher/administration certifications
Audrey Cosgrove	3/19/2012	Contract Renewal	7/1/12-6/30/13	\$ 45,050	Conduct certification revocation hearings, appeals of certificate suspensions, and other required hearings/appeals involving teacher/administration certifications
Special Ed Law Associates - Gail ImOberSteg	3/26/2012	Contract Renewal	7/1/12-6/30/13	\$ 49,998	Contractor will provide annual performance review/evaluations of all Special Education Hearing Officers
Capitol Strategies	3/26/2012	Contract Renewal	7/1/12-6/30/13	\$ 156,736	Services of one Programmer/Analyst to assist in development of the ENTITY system using Virtual Studio 2005
Workforce Language Services	3/26/2012	Contract Renewal	7/1/12-6/30/13	\$ 73,500	Contractor will provide translation services
Capitol Reporting Services	3/26/2012	Contract Renewal	7/1/12-6/30/13	\$ 30,000	Contractor will provide court reporting service

ILLINOIS STATE BOARD OF EDUCATION

FUNDING AND DISBURSEMENT SERVICES DIVISION

100 NORTH FIRST STREET, SPRINGFIELD, IL 62777

Approved Grants Less Than 1 Million

Thru Date:(03/01/2012-03/31/2012)

Program: 2012 - 3220, Career & Technical Ed Improvement (CTEI)

<u>RCDT</u>	<u>District Name</u>	<u>City</u>	<u>Budget Amt</u>	<u>Approval Date</u>
06-016-2010-46(00)	MORTON REG DELIVERY SYST-EFE	CICERO	\$212,793.00	03/21/2012
06-016-2120-46(00)	DES PLAINES VALLEY EFE 030	RIVER GROVE	\$472,568.00	03/12/2012
07-016-2180-46(00)	MORAIN AREA CAREER SYST-EFE	OAK LAWN	\$679,992.00	03/21/2012
07-016-2280-46(00)	CAREER DEVELPMT SYSTEM - EFE	OAK FOREST	\$597,363.00	03/12/2012
09-010-0080-46(00)	CHAMPAIGN-FORD EFE SYSTEM	CHAMPAIGN	\$455,942.00	03/01/2012
21-100-0040-46(00)	WILLIAMSON CO REG VOC SY-EFE	HERRIN	\$290,101.00	03/23/2012
25-000-0000-46(00)	REND LAKE REG DEL SYSTEM-EFE	MT VERNON	\$272,173.00	03/23/2012
26-000-0000-46(00)	WESTERN AREA CAREER SYSTEM	MACOMB	\$431,065.00	03/26/2012
31-045-0460-46(00)	NORTHERN KANE VOC SYSTEM-EFE	ELGIN	\$861,482.00	03/06/2012
38-000-0000-46(00)	LINCOLN LAND REG DEL SYST-EFE	LINCOLN	\$241,284.00	03/26/2012
39-000-0000-46(00)	IL HEARTLAND REGN PLAN - EFE	DECATUR	\$776,039.00	03/09/2012
46-009-0150-46(00)	TWO RIVERS VOC ED SYSTEM-EFE 250	BEARDSTOWN	\$218,457.00	03/19/2012
53-000-0000-46(00)	TAZEWELL COUNTY DEL SYST-EFE	PEKIN	\$514,693.00	03/12/2012
60-105-4280-30(00)	JUVENILE JUSTICE DEPT OF	SPRINGFIELD	\$89,753.00	03/21/2012
			\$6,113,705.00	

Program: 2012 - 3225, Career & Technical Ed. - W.E.C.E.P.

<u>RCDT</u>	<u>District Name</u>	<u>City</u>	<u>Budget Amt</u>	<u>Approval Date</u>
20-097-0050-26(00)	CARMI-WHITE COUNTY CUSD 5	CARMI	\$98,987.00	03/26/2012
41-057-0080-26(00)	BETHALTO CUSD 8	BETHALTO	\$109,783.00	03/26/2012
50-082-1890-22(00)	BOARD OF EDUCATION SD 189	EAST ST LOUIS	\$180,554.00	03/27/2012
			\$389,324.00	

Program: 2012 - 3305, Bilingual Ed. - T.P.I. & T.B.E.

<u>RCDT</u>	<u>District Name</u>	<u>City</u>	<u>Budget Amt</u>	<u>Approval Date</u>
05-016-0340-04(00)	GLENVIEW SD 34	GLENVIEW	\$236,531.00	03/21/2012
05-016-0690-02(00)	SKOKIE SD 69	SKOKIE	\$120,265.00	03/09/2012
05-016-2030-17(00)	NEW TRIER TWP HSD 203	NORTHFIELD	\$19,796.00	03/06/2012
06-016-0810-02(00)	SCHILLER PARK SD 81	SCHILLER PARK	\$180,046.00	03/12/2012
06-016-0845-02(00)	RHODES SD 84-5	RIVER GROVE	\$65,280.00	03/12/2012
06-016-0890-02(00)	COOK CO BD OF ED 89	MELROSE PARK	\$670,960.00	03/12/2012
06-016-2040-17(00)	LYONS TWP HSD 204	LA GRANGE	\$27,222.00	03/26/2012
07-016-1170-02(00)	NORTH PALOS SD 117	PALOS HILLS	\$275,920.00	03/12/2012
07-016-1270-02(00)	WORTH SD 127	WORTH	\$59,510.00	03/12/2012
07-016-1420-02(00)	FOREST RIDGE SD 142	OAK FOREST	\$42,227.00	03/09/2012
07-016-1590-02(00)	ELEM SD 159 - MATTESON	MATTESON	\$9,118.00	03/09/2012
19-022-0120-02(00)	ROSELLE SD 12	ROSELLE	\$34,312.00	03/27/2012
19-022-0160-02(00)	QUEEN BEE SD 16	GLENDALE HTS	\$346,600.00	03/23/2012
19-022-0440-02(00)	LOMBARD SD 44	LOMBARD	\$103,849.00	03/27/2012
19-022-0600-02(00)	MAERCKER SD 60	CLARENDON HILLS	\$59,194.00	03/27/2012
19-022-0620-02(00)	GOWER SD 62	WILLOWBROOK	\$8,199.00	03/05/2012
19-022-0860-17(00)	HINSDALE DIST 86	HINSDALE	\$26,874.00	03/05/2012
19-022-0870-17(00)	GLENBARD TWP HSD 87	GLEN ELLYN	\$174,870.00	03/21/2012
19-022-0890-04(00)	COMMUNITY CONS SCH GLEN ELLYN 89	GLEN ELLYN	\$46,457.00	03/06/2012
24-032-2010-04(00)	MINOOKA CCSD 201	MINOOKA	\$35,243.00	03/06/2012
24-047-3080-26(00)	OSWEGO CUSD 308	OSWEGO	\$320,385.00	03/12/2012
31-045-3030-26(00)	COMMUNITY UNIT SCHOOL DIST 303	SAINT CHARLES	\$222,905.00	03/26/2012
32-046-1110-25(00)	KANKAKEE SD 111	KANKAKEE	\$232,006.00	03/06/2012
34-049-0060-02(00)	ZION ESD 6	ZION	\$227,626.00	03/12/2012
34-049-0790-02(00)	FREMONT SD 79	MUNDELEIN	\$71,371.00	03/23/2012
34-049-1020-04(00)	APTAKISIC-TRIPP CCSD 102	BUFFALO GROVE	\$173,630.00	03/12/2012
34-049-1250-13(00)	CONS HIGH SCH DIST 125	LINCOLNSHIRE	\$57,437.00	03/23/2012
47-071-2230-26(00)	MERIDIAN CUSD 223	STILLMAN VALLEY	\$32,095.00	03/06/2012
50-082-1890-22(00)	BOARD OF EDUCATION SD 189	EAST ST LOUIS	\$14,673.00	03/06/2012
56-099-030C-04(00)	TROY CCSD 30C	PLAINFIELD	\$85,659.00	03/05/2012
			\$3,980,260.00	

Program: 2012 - 3695, Truants Alternative/Optional Ed.

<u>RCDT</u>	<u>District Name</u>	<u>City</u>	<u>Budget Amt</u>	<u>Approval Date</u>
04-101-2050-25(10)	ROCKFORD SD 205	ROCKFORD	\$242,832.00	03/29/2012
09-010-1160-22(10)	URBANA SD 116	URBANA	\$188,967.00	03/09/2012
			\$431,799.00	

Program: 2012 - 3696, Regional Safe Schools

<u>RCDT</u>	<u>District Name</u>	<u>City</u>	<u>Budget Amt</u>	<u>Approval Date</u>
19-000-0000-00(00)	REGIONAL OFFICE OF EDUCATION19	WHEATON	\$644,195.00	03/28/2012
			\$644,195.00	

Program: 2012 - 3705, Early Childhood - Block Grant

<u>RCDT</u>	<u>District Name</u>	<u>City</u>	<u>Budget Amt</u>	<u>Approval Date</u>
03-003-0020-26(01)	BOND COUNTY 2	GREENVILLE	\$53,000.00	03/20/2012
04-101-1220-22(01)	HARLEM CONSOLIDATED SD 122	MACHESNEY PARK	\$117,317.00	03/19/2012
06-016-0810-02(00)	SCHILLER PARK SD 81	SCHILLER PARK	\$397,223.00	03/01/2012
06-016-0920-02(00)	LINDOP SD 92	BROADVIEW	\$114,568.00	03/08/2012
06-016-1020-02(00)	LA GRANGE SD 102	LA GRANGE PARK	\$84,000.00	03/20/2012
06-016-1030-02(00)	LYONS SD 103	LYONS	\$341,688.00	03/15/2012
06-016-1030-02(01)	LYONS SD 103	LYONS	\$58,000.00	03/02/2012
07-016-1240-02(00)	EVERGREEN PARK ESD 124	EVERGREEN PARK	\$149,472.00	03/14/2012
07-016-1275-02(00)	CHICAGO RIDGE SD 1275	CHICAGO RIDGE	\$360,000.00	03/12/2012
07-016-1420-02(00)	FOREST RIDGE SD 142	OAK FOREST	\$239,823.00	03/19/2012
07-016-1440-02(00)	PRAIRIE-HILLS ELEM SD 144	MARKHAM	\$240,000.00	03/26/2012
07-016-1470-02(00)	W HARVEY-DIXMOOR PUB SD 147	HARVEY	\$496,877.00	03/20/2012
07-016-1550-02(00)	CALUMET CITY SD 155	CALUMET CITY	\$360,000.00	03/16/2012
09-000-0000-00(00)	REGIONAL OFFICE OF EDUCATION09	RANTOUL	\$742,805.00	03/28/2012
12-013-0250-26(00)	NORTH CLAY CUSD 25	LOUISVILLE	\$120,000.00	03/15/2012
13-095-0490-04(00)	NASHVILLE CCSD 49	NASHVILLE	\$181,246.00	03/01/2012
22-029-0660-25(00)	CANTON UNION SD 66	CANTON	\$240,000.00	03/16/2012
24-047-3080-26(00)	OSWEGO CUSD 308	OSWEGO	\$873,699.00	03/06/2012

26-000-0000-00(01)	REGIONAL OFFICE OF EDUCATION26	MACOMB	\$271,468.00	03/07/2012
28-006-1150-02(01)	PRINCETON ELEM SD 115	PRINCETON	\$104,459.00	03/20/2012
35-050-1220-02(00)	LASALLE ESD 122	LA SALLE	\$330,000.00	03/20/2012
35-050-2890-04(01)	MENDOTA COMMUNITY CONS SD 289	MENDOTA	\$62,025.00	03/05/2012
40-056-0090-26(00)	SOUTHWESTERN CUSD 9	PIASA	\$150,000.00	03/30/2012
41-057-0050-26(00)	HIGHLAND CUSD 5	HIGHLAND	\$186,271.00	03/14/2012
41-057-0110-26(00)	ALTON CUSD 11	ALTON	\$777,386.00	03/16/2012
41-057-0110-26(01)	ALTON CUSD 11	ALTON	\$192,084.00	03/02/2012
41-057-0120-26(00)	MADISON CUSD 12	MADISON	\$441,426.00	03/12/2012
46-005-0010-26(01)	BROWN COUNTY CUSD 1	MOUNT STERLING	\$75,647.00	03/06/2012
46-009-0150-26(00)	BEARDSTOWN CUSD 15	BEARDSTOWN	\$379,252.00	03/06/2012
46-009-0150-26(01)	BEARDSTOWN CUSD 15	BEARDSTOWN	\$149,039.00	03/07/2012
48-072-3250-26(01)	PEORIA HEIGHTS CUSD 325	PEORIA HEIGHTS	\$140,000.00	03/16/2012
50-082-066P-00(00)	DISCOVERY SCHOOL	OFALLON	\$152,000.00	03/20/2012
50-082-1750-02(01)	HARMONY EMGE SD 175	BELLEVILLE	\$55,985.00	03/01/2012
51-084-0010-26(00)	TRI CITY CUSD 1	BUFFALO	\$173,820.00	03/12/2012
			\$8,810,580.00	

Program: 2012 - 3730, ROE/ISC Operations

<u>RCDT</u>	<u>District Name</u>	<u>City</u>	<u>Budget Amt</u>	<u>Approval Date</u>
21-000-0000-00(00)	REGIONAL OFFICE OF EDUCATION21	BENTON	\$29,601.00	03/14/2012
			\$29,601.00	

Program: 2012 - 3962, Arts Education & Foreign Language Assistance

<u>RCDT</u>	<u>District Name</u>	<u>City</u>	<u>Budget Amt</u>	<u>Approval Date</u>
05-016-0540-04(M2)	SCHAUMBURG CCSD 54	SCHAUMBURG	\$75,000.00	03/05/2012
07-016-1300-02(M2)	COOK COUNTY SD 130	BLUE ISLAND	\$68,000.00	03/20/2012
21-028-1960-26(M2)	SESSER-VALIER CUSD 196	SESSER	\$70,605.00	03/05/2012
25-041-0080-04(M2)	INA CCSD 8	INA	\$75,000.00	03/20/2012
34-049-0790-02(M2)	FREMONT SD 79	MUNDELEIN	\$51,200.00	03/05/2012
34-049-1170-16(M2)	ANTIOCH C H S D 117	ANTIOCH	\$52,183.00	03/05/2012
34-049-1200-13(P2)	CONSOLIDATED HS DIST 120	MUNDELEIN	\$16,324.00	03/05/2012
44-063-0500-26(P2)	HARVARD CUSD 50	HARVARD	\$15,817.00	03/20/2012

47-071-2230-26(P2)	MERIDIAN CUSD 223	STILLMAN VALLEY	\$17,859.00	03/20/2012
			\$441,988.00	

Program: 2012 - 3990, Children's Mental Health Partnership

<u>RCDT</u>	<u>District Name</u>	<u>City</u>	<u>Budget Amt</u>	<u>Approval Date</u>
04-000-0000-00(LS)	REGIONAL OFFICE OF EDUCATION04	LOVES PARK	\$25,000.00	03/02/2012
06-000-0000-00(LS)	INTERMEDIATE SERVICE CENTER 2	LA GRANGE	\$25,000.00	03/02/2012
07-000-0000-00(LS)	INTERMEDIATE SERVICE CENTER 4	CHICAGO HTS	\$21,054.00	03/07/2012
31-045-0460-22(SO)	SCHOOL DISTRICT U-46	ELGIN	\$75,000.00	03/05/2012
32-000-0000-00(LS)	REGIONAL OFFICE OF EDUCATION32	KANKAKEE	\$24,689.00	03/02/2012
48-000-0000-00(LS)	REGIONAL OFFICE OF EDUCATION48	PEORIA	\$25,000.00	03/20/2012
56-000-0000-00(LS)	REGIONAL OFFICE OF EDUCATION56	NEW LENOX	\$25,000.00	03/02/2012
			\$220,743.00	

Program: 2012 - 3999, Other State Programs

<u>RCDT</u>	<u>District Name</u>	<u>City</u>	<u>Budget Amt</u>	<u>Approval Date</u>
50-082-1890-22(LP)	BOARD OF EDUCATION SD 189	EAST ST LOUIS	\$450,000.00	03/07/2012
			\$450,000.00	

Program: 2012 - 4107, Title VI - Rural Education Initiative

<u>RCDT</u>	<u>District Name</u>	<u>City</u>	<u>Budget Amt</u>	<u>Approval Date</u>
02-061-0010-26(00)	MASSAC UD 1	METROPOLIS	\$45,960.00	03/23/2012
11-015-0020-26(00)	MATTOON CUSD 2	MATTOON	\$70,892.00	03/19/2012
20-083-0030-26(00)	HARRISBURG CUSD 3	HARRISBURG	\$44,604.00	03/12/2012
20-097-0050-26(00)	CARMI-WHITE COUNTY CUSD 5	CARMI	\$29,357.00	03/20/2012
22-029-0660-25(00)	CANTON UNION SD 66	CANTON	\$55,451.00	03/20/2012
40-031-0030-26(00)	NORTH GREENE USD 3	WHITE HALL	\$19,703.00	03/30/2012
			\$265,967.00	

Program: 2012 - 4300, Title I - Low Income

<u>RCDT</u>	<u>District Name</u>	<u>City</u>	<u>Budget Amt</u>	<u>Approval Date</u>
01-075-0100-26(00)	PIKELAND CUSD 10	PITTSFIELD	\$374,902.00	03/30/2012
02-044-0550-02(00)	VIENNA PUBLIC SCHOOL DIST 55	VIENNA	\$133,249.00	03/27/2012
02-077-1010-26(00)	MERIDIAN CUSD 101	MOUNDS	\$714,277.00	03/27/2012
02-091-0660-22(00)	DONGOLA CUSD 66	DONGOLA	\$187,741.00	03/27/2012
02-091-0840-26(00)	SHAWNEE CUSD 84	WOLF LAKE	\$229,220.00	03/05/2012
03-025-0500-26(00)	COMMUNITY UNIT SCHOOL DIST 50	TEUTOPOLIS	\$125,818.00	03/30/2012
04-004-2000-26(00)	NORTH BOONE CUD 200	POPLAR GROVE	\$199,882.00	03/21/2012
04-101-3210-26(00)	PECATONICA CUSD 321	PECATONICA	\$81,324.00	03/09/2012
05-016-0250-02(00)	ARLINGTON HEIGHTS SD 25	ARLINGTON HEIGH	\$207,661.00	03/09/2012
06-016-0790-02(00)	PENNOYER SD 79	NORRIDGE	\$57,454.00	03/30/2012
06-016-0800-02(00)	BOARD OF EDUCATION DISTRICT 80	NORRIDGE	\$157,628.00	03/27/2012
06-016-0810-02(00)	SCHILLER PARK SD 81	SCHILLER PARK	\$360,834.00	03/09/2012
06-016-0920-02(00)	LINDOP SD 92	BROADVIEW	\$107,010.00	03/27/2012
06-016-0970-02(00)	OAK PARK SD 97	OAK PARK	\$494,413.00	03/21/2012
07-016-113A-02(00)	LEMONT-BROMBEREK CSD 113A	LEMONT	\$177,403.00	03/19/2012
07-016-1240-02(00)	EVERGREEN PARK ESD 124	EVERGREEN PARK	\$284,379.00	03/16/2012
07-016-1250-02(00)	ATWOOD HEIGHTS DISTRICT 125	ALSIP	\$144,862.00	03/12/2012
07-016-1260-02(00)	ALSIP-HAZLGRN-OAKLWN SD 126	ALSIP	\$249,994.00	03/09/2012
07-016-1350-02(00)	ORLAND SD 135	ORLAND PARK	\$564,907.00	03/09/2012
07-016-1580-02(00)	LANSING SD 158	LANSING	\$595,758.00	03/28/2012
07-016-1620-02(00)	MATTESON ELEM SD 162	RIGHTON PARK	\$727,638.00	03/09/2012
07-016-1670-02(00)	BROOKWOOD SD 167	GLENWOOD	\$382,828.00	03/15/2012
07-016-1680-04(00)	COMMUNITY CONSOLIDATED S D 168	SAUK VILLAGE	\$872,813.00	03/15/2012
08-008-3140-26(00)	WEST CARROLL CUSD 314	THOMSON	\$327,824.00	03/05/2012
08-089-2010-26(00)	DAKOTA CUSD 201	DAKOTA	\$86,409.00	03/30/2012
08-089-2020-26(00)	LENA WINSLOW CUSD 202	LENA	\$108,541.00	03/30/2012
09-010-0010-26(00)	FISHER CUSD 1	FISHER	\$48,611.00	03/09/2012
09-010-0030-26(00)	COMMUNITY UNIT SCHOOL DIST 3	MAHOMET	\$369,164.00	03/16/2012
09-010-1300-04(00)	THOMASBORO CCSD 130	THOMASBORO	\$98,847.00	03/28/2012
09-010-1930-17(00)	RANTOUL TWP HSD 193	RANTOUL	\$359,441.00	03/09/2012
10-011-0010-26(00)	MORRISONVILLE CUSD 1	MORRISONVILLE	\$63,347.00	03/28/2012
11-012-002C-26(00)	MARSHALL CUSD 2C	MARSHALL	\$244,162.00	03/27/2012

11-021-3060-26(00)	ARCOLA CUSD 306	ARCOLA	\$102,421.00	03/05/2012
12-040-0010-26(00)	JASPER COUNTY CUD 1	NEWTON	\$298,746.00	03/05/2012
12-080-0010-26(00)	EAST RICHLAND CUSD 1	OLNEY	\$484,924.00	03/27/2012
12-080-0020-26(00)	COUNTY OF RICHLAND	NOBLE	\$103,643.00	03/27/2012
13-014-0010-26(00)	CARLYLE CUSD 1	CARLYLE	\$212,447.00	03/30/2012
13-058-5010-26(00)	SANDOVAL CUSD 501	SANDOVAL	\$231,231.00	03/05/2012
13-058-7220-26(00)	ODIN PUBLIC SCHOOL DIST 722	ODIN	\$111,244.00	03/15/2012
13-095-0110-04(00)	IRVINGTON CCSD 11	IRVINGTON	\$38,295.00	03/30/2012
16-019-4250-26(00)	COMMUNITY UNIT DIST 425	SHABBONA	\$83,791.00	03/05/2012
17-053-0900-17(00)	PONTIAC TWP HSD 90	PONTIAC	\$141,618.00	03/27/2012
17-064-0020-26(00)	LEROY CUSD 2	LE ROY	\$58,811.00	03/28/2012
19-022-0040-02(00)	COUNTY OF DUPAGE SCHOOL DIST 4	ADDISON	\$993,300.00	03/28/2012
19-022-0120-02(00)	ROSELLE SD 12	ROSELLE	\$57,649.00	03/06/2012
19-022-0130-02(00)	BLOOMINGDALE SD 13	BLOOMINGDALE	\$82,924.00	03/09/2012
19-022-0530-02(00)	BUTLER SD 53	OAK BROOK	\$19,390.00	03/15/2012
19-022-0600-02(00)	MAERCKER SD 60	CLARENDON HILLS	\$137,327.00	03/19/2012
19-022-0610-02(00)	DARIEN SD 61	DARIEN	\$186,454.00	03/05/2012
19-022-0660-02(00)	CENTER CASS SD 66	DOWNERS GVE	\$67,433.00	03/16/2012
19-022-0860-17(00)	HINSDALE DIST 86	HINSDALE	\$248,077.00	03/30/2012
19-022-0880-16(00)	DUPAGE HSD 88	ADDISON	\$526,767.00	03/09/2012
19-022-1810-04(00)	COMM CONS SCH DIST 181	BURR RIDGE	\$158,907.00	03/30/2012
19-022-2010-26(00)	COMMUNITY UNIT SCHOOL DIST 201	WESTMONT	\$183,385.00	03/30/2012
19-022-2050-26(00)	ELMHURST SD 205	ELMHURST	\$562,939.00	03/05/2012
20-093-0170-24(00)	ALLENDALE CCSD 17	ALLENDALE	\$40,106.00	03/27/2012
20-096-0140-04(00)	GEFF CCSD 14	GEFF	\$23,497.00	03/22/2012
20-096-2250-16(00)	FAIRFIELD CHSD 225	FAIRFIELD	\$160,319.00	03/05/2012
20-097-0050-26(00)	CARMI-WHITE COUNTY CUSD 5	CARMI	\$391,428.00	03/28/2012
21-100-0030-26(00)	COMMUNITY UNIT DISTRICT NO 3	MARION	\$82,825.00	03/28/2012
24-032-002C-02(00)	MAZON-VERONA-KINSMAN ESD 2C	MAZON	\$37,092.00	03/15/2012
24-032-0540-02(00)	MORRIS SD 54	MORRIS	\$158,266.00	03/27/2012
24-032-0740-03(00)	SOUTH WILMINGTON CSD 74	SOUTH WILMINGTO	\$25,815.00	03/21/2012
24-032-0750-02(00)	BRACEVILLE SD 75	BRACEVILLE	\$26,259.00	03/28/2012
24-047-0880-26(00)	PLANO CUSD 88	PLANO	\$255,979.00	03/09/2012
25-033-0100-26(00)	HAMILTON CNTY CUSD 10	MCLEANSBORO	\$328,950.00	03/21/2012
25-041-2040-17(00)	WEBBER TOWNSHIP HSD 204	BLUFORD	\$69,262.00	03/27/2012
26-034-3070-16(00)	ILLINI WEST HSD 307	CARTHAGE	\$46,705.00	03/15/2012
26-034-3250-26(00)	NAUVOO-COLUSA CUSD 325	NAUVOO	\$74,322.00	03/05/2012

28-006-0980-02(00)	DALZELL SD 98	DALZELL	\$11,439.00	03/21/2012
28-006-5000-15(00)	PRINCETON TWP HSD 500	PRINCETON	\$101,756.00	03/30/2012
28-006-5020-17(00)	HALL TWP HSD 502	SPRING VALLEY	\$75,908.00	03/09/2012
30-039-1760-26(00)	TRICO CUSD 176	CAMPBELL HILL	\$348,251.00	03/27/2012
32-038-0040-26(00)	CENTRAL CUSD 4	CLIFTON	\$176,334.00	03/05/2012
34-049-0370-02(00)	GAVIN SD 37	INGLESIDE	\$119,018.00	03/19/2012
34-049-0960-04(00)	KILDEER COUNTRYSIDE CCSD 96	BUFFALO GROVE	\$125,739.00	03/05/2012
34-049-1090-02(00)	DEERFIELD SD 109	DEERFIELD	\$135,160.00	03/19/2012
34-049-1170-16(00)	ANTIOCH C H S D 117	ANTIOCH	\$113,905.00	03/16/2012
34-049-1200-13(00)	CONSOLIDATED HS DIST 120	MUNDELEIN	\$209,191.00	03/07/2012
35-050-2800-17(00)	COUNTY OF LASALLE SCHL DIST 280	MENDOTA	\$107,849.00	03/27/2012
38-054-0210-26(00)	HARTSBURG EMDEN CUSD 21	HARTSBURG	\$31,521.00	03/30/2012
38-054-0230-26(00)	MOUNT PULASKI CUD 23	MOUNT PULASKI	\$74,326.00	03/28/2012
40-056-0070-26(00)	GILLESPIE CUSD 7	GILLESPIE	\$295,692.00	03/30/2012
40-056-0340-26(00)	NORTH MAC CUSD 34	GIRARD	\$331,307.00	03/27/2012
46-005-0010-26(00)	BROWN COUNTY CUSD 1	MOUNT STERLING	\$107,707.00	03/30/2012
46-069-0060-26(00)	WAVERLY CUSD 6	WAVERLY	\$60,153.00	03/30/2012
47-052-2720-26(00)	AMBOY CUSD 272	AMBOY	\$105,441.00	03/27/2012
47-071-2310-04(00)	ROCHELLE CCD 231	ROCHELLE	\$400,773.00	03/19/2012
48-072-3090-26(00)	BRIMFIELD CUSD 309	BRIMFIELD	\$23,950.00	03/27/2012
48-072-3100-16(00)	LIMESTONE CHSD 310	BARTONVILLE	\$314,680.00	03/09/2012
48-072-3220-26(00)	ELMWOOD CUSD 322	ELMWOOD	\$60,049.00	03/09/2012
50-082-0770-16(00)	FREEBURG CHSD 77	FREEBURG	\$48,214.00	03/09/2012
50-082-1960-26(00)	DUPO CUSD 196	DUPO	\$329,378.00	03/15/2012
51-084-0050-26(00)	BALL CHATHAM CUSD 5	CHATHAM	\$277,733.00	03/30/2012
51-084-0100-26(00)	AUBURN CUSD 10	AUBURN	\$186,206.00	03/28/2012
53-090-3090-16(00)	COUNTY OF TAZEWELL SD 309	EAST PEORIA	\$197,232.00	03/27/2012
54-092-0110-26(00)	HOOPESTON AREA CUSD 11	HOOPESTON	\$437,952.00	03/15/2012
54-092-0120-26(00)	JAMAICA CUSD 12	SIDELL	\$98,164.00	03/12/2012
55-098-0050-26(00)	COMMUNITY UNIT SCHOOL DISTRICT	STERLING	\$863,344.00	03/15/2012
55-098-0130-02(00)	ROCK FALLS ESD 13	ROCK FALLS	\$314,265.00	03/05/2012
55-098-3010-17(00)	ROCK FALLS TWP HSD 301	ROCK FALLS	\$169,248.00	03/27/2012
			\$22,202,774.00	

Program: 2012 - 4305, Title I - Low Income - Neglected Priv.

<u>RCDT</u>	<u>District Name</u>	<u>City</u>	<u>Budget Amt</u>	<u>Approval Date</u>
41-057-0110-26(00)	ALTON CUSD 11	ALTON	\$9,625.00	03/16/2012
			\$9,625.00	

Program: 2012 - 4306, Title I - Low Income - Delinquent Priv

<u>RCDT</u>	<u>District Name</u>	<u>City</u>	<u>Budget Amt</u>	<u>Approval Date</u>
17-064-0050-26(00)	MCLEAN COUNTY UD 5	NORMAL	\$74,965.00	03/12/2012
			\$74,965.00	

Program: 2012 - 4331, Title I - School Improvement & Accountability

<u>RCDT</u>	<u>District Name</u>	<u>City</u>	<u>Budget Amt</u>	<u>Approval Date</u>
02-000-0000-00(SS)	REGIONAL OFFICE OF EDUCATION02	ULLIN	\$656,896.00	03/20/2012
05-000-0000-00(SS)	INTERMEDIATE SERVICE CENTER 1	DES PLAINES	\$602,008.00	03/07/2012
			\$1,258,904.00	

Program: 2012 - 4421, Title IV - 21st Century Comm Learning Centers

<u>RCDT</u>	<u>District Name</u>	<u>City</u>	<u>Budget Amt</u>	<u>Approval Date</u>
15-016-904P-00(08)	DIME CHILD FOUNDATION	CHICAGO	\$137,850.00	03/15/2012
21-028-1030-13(08)	BENTON CHSD 103	BENTON	\$98,475.00	03/22/2012
25-041-0800-02(08)	MT VERNON CITY SCHOOL 80	MOUNT VERNON	\$110,250.00	03/22/2012
25-041-0800-02(10)	MT VERNON CITY SCHOOL 80	MOUNT VERNON	\$300,000.00	03/22/2012
30-039-0950-02(12)	CARBONDALE ESD 95	CARBONDALE	\$209,340.00	03/06/2012
31-045-0460-22(12)	SCHOOL DISTRICT U-46	ELGIN	\$832,281.00	03/08/2012
41-057-0120-26(10)	MADISON CUSD 12	MADISON	\$150,000.00	03/06/2012
49-000-0000-00(02)	REGIONAL OFFICE OF EDUCATION49	MOLINE	\$150,000.00	03/15/2012
50-082-1870-26(10)	CAHOKIA CUSD 187	CAHOKIA	\$496,200.00	03/06/2012
51-084-071P-00(12)	BOYS & GIRLS CLUB OF SPRINGFIELD	SPRINGFIELD	\$660,703.00	03/06/2012

65-108-9090-51(10)	LOGAN SQUARE NEIGHBORHOOD ASSOC CHICAGO	\$334,950.00	03/09/2012
		\$3,480,049.00	

Program: 2012 - 4600, Fed. - Sp. Ed. - Pre-School Flow Through

<u>RCDT</u>	<u>District Name</u>	<u>City</u>	<u>Budget Amt</u>	<u>Approval Date</u>
04-004-1000-61(00)	BOONE COUNTY SPEC EDUC COOP	BELVIDERE	\$51,938.00	03/15/2012
06-016-0980-61(00)	FED OF DISTRICTS FOR SPEC ED	BERWYN	\$194,432.00	03/21/2012
07-016-8020-60(00)	SPEC EDUC COOP S COOK CO SP	CHICAGO HEIGHTS	\$234,831.00	03/20/2012
07-016-8060-60(00)	AERO SPECIAL EDUC COOP	BURBANK	\$114,658.00	03/29/2012
10-011-8010-60(00)	MID-STATE SPECIAL EDUCATION	MORRISONVILLE	\$159,703.00	03/02/2012
17-064-0870-25(00)	BLOOMINGTON PUBLIC SCHOOLS	BLOOMINGTON	\$52,023.00	03/15/2012
19-022-0160-61(00)	COOP ASSOC FOR SPEC EDUC	GLEN ELLYN	\$207,278.00	03/05/2012
26-062-0000-61(00)	WEST CENTRAL ILL SPEC EDUC C	MACOMB	\$203,842.00	03/29/2012
32-046-0530-02(00)	BOURBONNAIS ESD 53	BOURBONNAIS	\$17,740.00	03/02/2012
32-046-8500-60(00)	KANKAKEE AREA SPEC EDUC COOP	KANKAKEE	\$68,678.00	03/27/2012
34-049-0950-26(00)	COMMUNITY UNIT SCHOOL DIST 95	LAKE ZURICH	\$51,430.00	03/29/2012
41-057-0090-61(00)	MADISON CO REG I SPEC EDUC J	GRANITE CITY	\$147,187.00	03/29/2012
41-057-8010-60(00)	REGION III SPECIAL EDUCATION	COTTAGE HILLS	\$185,887.00	03/15/2012
50-082-1890-61(00)	E ST LOUIS AREA JOINT AGREEM	EAST ST LOUIS	\$63,756.00	03/12/2012
55-098-0000-61(00)	BI COUNTY SPECIAL EDUC COOP	STERLING	\$104,428.00	03/21/2012
56-099-8430-60(00)	LINCOLN WAY AREA SPEC ED JA	FRANKFORT	\$95,107.00	03/28/2012
			\$1,952,918.00	

Program: 2012 - 4605, Fed. - Sp. Ed. - Pre-School Discretionary

<u>RCDT</u>	<u>District Name</u>	<u>City</u>	<u>Budget Amt</u>	<u>Approval Date</u>
19-022-0660-61(EC)	SCH ASSOC SPEC ED DUPAGE SA	NAPERVILLE	\$197,760.00	03/20/2012
65-108-9000-80(R1)	ILLINOIS DEPT OF HUMAN SERVICES	SPRINGFIELD	\$28,100.00	03/01/2012
65-108-9000-80(RS)	ILLINOIS DEPT OF HUMAN SERVICES	SPRINGFIELD	\$20,645.00	03/01/2012
			\$246,505.00	

Program: 2012 - 4620, Fed. - Sp. Ed. - I.D.E.A. - Flow Through

<u>RCDT</u>	<u>District Name</u>	<u>City</u>	<u>Budget Amt</u>	<u>Approval Date</u>
06-016-0810-02(00)	SCHILLER PARK SD 81	SCHILLER PARK	\$281,711.00	03/07/2012
07-016-9010-90(00)	SOUTHLAND COLLEGE PREP	RIGHTON PARK	\$31,053.00	03/02/2012
19-022-1810-04(00)	COMM CONS SCH DIST 181	BURR RIDGE	\$719,278.00	03/15/2012
21-028-1680-26(00)	FRANKFORT COMMUNITY UNIT 168	WEST FRANKFORT	\$461,518.00	03/27/2012
47-052-1700-61(00)	LEE COUNTY SPEC EDUC ASSOC	DIXON	\$981,132.00	03/29/2012
51-084-003A-26(00)	ROCHESTER CUSD 3A	ROCHESTER	\$405,471.00	03/14/2012
56-099-0880-61(00)	LOCKPORT AREA SPEC EDUC COOP	LOCKPORT	\$646,802.00	03/27/2012
56-099-0920-02(00)	WILL COUNTY SD 92	LOCKPORT	\$369,501.00	03/27/2012
			\$3,896,466.00	

Program: 2012 - 4720, CTE - Perkins - State Leadership

<u>RCDT</u>	<u>District Name</u>	<u>City</u>	<u>Budget Amt</u>	<u>Approval Date</u>
35-050-1200-17(00)	LASALLE-PERU TOWNSHIP HIGH	LA SALLE	\$10,000.00	03/26/2012
			\$10,000.00	

Program: 2012 - 4740, CTE - Perkins - DHS Ed

<u>RCDT</u>	<u>District Name</u>	<u>City</u>	<u>Budget Amt</u>	<u>Approval Date</u>
65-108-9000-80(45)	ILLINOIS DEPT OF HUMAN SERVICES	SPRINGFIELD	\$180,896.00	03/28/2012
			\$180,896.00	

Program: 2012 - 4745, CTE - Perkins - Secondary

<u>RCDT</u>	<u>District Name</u>	<u>City</u>	<u>Budget Amt</u>	<u>Approval Date</u>
05-016-2140-46(00)	NORTHWEST SUBURBAN ED TO CAREERS	ARLINGTON HTS	\$654,993.00	03/21/2012
06-016-2010-46(00)	MORTON REG DELIVERY SYST-EFE	CICERO	\$400,150.00	03/20/2012
06-016-2120-46(00)	DES PLAINES VALLEY EFE 030	RIVER GROVE	\$530,335.00	03/12/2012
07-016-2180-46(00)	MORaine AREA CAREER SYST-EFE	OAK LAWN	\$669,347.00	03/21/2012

09-010-0080-46(00)	CHAMPAIGN-FORD EFE SYSTEM	CHAMPAIGN	\$326,822.00	03/05/2012
17-053-0900-46(00)	LIVINGSTON EAST AREA - EFE 380	PONTIAC	\$67,497.00	03/09/2012
31-045-0460-46(00)	NORTHERN KANE VOC SYSTEM-EFE	ELGIN	\$653,746.00	03/06/2012
40-000-0000-46(00)	CENTRAL ILLINOIS RURAL REGION	JERSEYVILLE	\$118,129.00	03/20/2012
41-057-7450-45(00)	MADISON CTY REG VOC EDUC-EFE	EDWARDSVILLE	\$479,261.00	03/30/2012
			\$3,900,280.00	

Program: 2012 - 4905, Title III - Immigrant Education Program (IEP)

<u>RCDT</u>	<u>District Name</u>	<u>City</u>	<u>Budget Amt</u>	<u>Approval Date</u>
19-022-0870-17(00)	GLENBARD TWP HSD 87	GLEN ELLYN	\$21,689.00	03/22/2012
24-047-3080-26(00)	OSWEGO CUSD 308	OSWEGO	\$5,135.00	03/12/2012
			\$26,824.00	

Program: 2012 - 4909, Title III - Lang Inst Prog-Limited Eng LIPLEP

<u>RCDT</u>	<u>District Name</u>	<u>City</u>	<u>Budget Amt</u>	<u>Approval Date</u>
05-016-0340-04(00)	GLENVIEW SD 34	GLENVIEW	\$238,288.00	03/21/2012
05-016-0690-02(00)	SKOKIE SD 69	SKOKIE	\$64,716.00	03/09/2012
06-016-0810-02(00)	SCHILLER PARK SD 81	SCHILLER PARK	\$88,511.00	03/12/2012
06-016-0845-02(00)	RHODES SD 84-5	RIVER GROVE	\$27,716.00	03/12/2012
06-016-0890-02(00)	COOK CO BD OF ED 89	MELROSE PARK	\$291,077.00	03/12/2012
07-016-1170-02(00)	NORTH PALOS SD 117	PALOS HILLS	\$105,711.00	03/12/2012
07-016-1270-02(00)	WORTH SD 127	WORTH	\$38,060.00	03/12/2012
07-016-1420-02(00)	FOREST RIDGE SD 142	OAK FOREST	\$27,116.00	03/09/2012
19-022-0120-02(00)	ROSELLE SD 12	ROSELLE	\$14,820.00	03/27/2012
19-022-0160-02(00)	QUEEN BEE SD 16	GLENDALE HTS	\$143,069.00	03/23/2012
19-022-0440-02(00)	LOMBARD SD 44	LOMBARD	\$63,500.00	03/27/2012
19-022-0600-02(00)	MAERCKER SD 60	CLARENDON HILLS	\$25,311.00	03/27/2012
19-022-0860-17(00)	HINSDALE DIST 86	HINSDALE	\$14,756.00	03/05/2012
19-022-0870-17(00)	GLENBARD TWP HSD 87	GLEN ELLYN	\$63,202.00	03/21/2012
19-022-0890-04(00)	COMMUNITY CONS SCH GLEN ELLYN 89	GLEN ELLYN	\$19,429.00	03/06/2012
24-032-2010-04(00)	MINOOKA CCSD 201	MINOOKA	\$18,240.00	03/06/2012
24-047-3080-26(00)	OSWEGO CUSD 308	OSWEGO	\$132,713.00	03/12/2012
31-045-3030-26(00)	COMMUNITY UNIT SCHOOL DIST 303	SAINT CHARLES	\$116,220.00	03/26/2012

32-046-1110-25(00)	KANKAKEE SD 111	KANKAKEE	\$85,755.00	03/06/2012
34-049-0060-02(00)	ZION ESD 6	ZION	\$71,440.00	03/12/2012
34-049-0790-02(00)	FREMONT SD 79	MUNDELEIN	\$36,100.00	03/23/2012
34-049-1020-04(00)	APTAKISIC-TRIPP CCSD 102	BUFFALO GROVE	\$59,660.00	03/12/2012
34-049-1250-13(00)	CONS HIGH SCH DIST 125	LINCOLNSHIRE	\$16,420.00	03/23/2012
47-071-2230-26(00)	MERIDIAN CUSD 223	STILLMAN VALLEY	\$15,826.00	03/06/2012
56-099-030C-04(00)	TROY CCSD 30C	PLAINFIELD	\$40,470.00	03/05/2012
			\$1,818,126.00	

Program: 2012 - 4910, Learn and Serve America

<u>RCDT</u>	<u>District Name</u>	<u>City</u>	<u>Budget Amt</u>	<u>Approval Date</u>
05-016-2020-17(00)	EVANSTON TWP H S DIST 202	EVANSTON	\$9,250.00	03/05/2012
06-000-0000-00(00)	INTERMEDIATE SERVICE CENTER 2	LA GRANGE	\$12,543.00	03/30/2012
06-016-0830-02(00)	COOK CNTY BD EDUCATION 083	FRANKLIN PARK	\$8,750.00	03/05/2012
06-016-2010-17(00)	COOK COUNTY HSD 201	CICERO	\$9,482.00	03/05/2012
11-015-5170-51(00)	LAKE LAND COLL DIST 517	MATTOON	\$12,543.00	03/30/2012
15-016-2990-25(00)	CITY OF CHICAGO SD 299	CHICAGO	\$86,425.00	03/30/2012
22-029-0970-26(00)	LEWISTOWN SCHOOL DISTRICT 97	LEWISTOWN	\$14,343.00	03/30/2012
24-047-3080-26(00)	OSWEGO CUSD 308	OSWEGO	\$11,369.00	03/21/2012
25-041-0800-02(00)	MT VERNON CITY SCHOOL 80	MOUNT VERNON	\$12,543.00	03/30/2012
26-062-1700-26(00)	BUSHNELL PRAIRIE CITY CUSD 170	BUSHNELL	\$12,543.00	03/30/2012
31-045-0460-22(00)	SCHOOL DISTRICT U-46	ELGIN	\$9,511.00	03/26/2012
31-045-3000-26(00)	COMMUNITY UNIT SCHOOL DIST 300	CARPENTERSVILLE	\$21,523.00	03/23/2012
34-049-0600-26(00)	COMMUNITY UNIT SCHOOL DIST 60	WAUKEGAN	\$11,362.00	03/05/2012
34-049-1130-17(00)	TOWNSHIP HIGH SCHOOL DIST 113	HIGHLAND PARK	\$12,561.00	03/30/2012
34-049-8040-60(00)	NORTHERN SUBURBAN SPEC ED DIST	HIGHLAND PARK	\$12,137.00	03/05/2012
34-049-8250-60(00)	SPEC EDUC DIST LAKE COUNTY	GAGES LAKE	\$12,543.00	03/30/2012
51-000-0000-00(00)	REGIONAL OFFICE OF EDUCATION51	SPRINGFIELD	\$23,343.00	03/05/2012
			\$292,771.00	

Program: 2012 - 4920, McKinney Education for Homeless Children

<u>RCDT</u>	<u>District Name</u>	<u>City</u>	<u>Budget Amt</u>	<u>Approval Date</u>
03-000-0000-00(00)	REGIONAL OFFICE OF EDUCATION03	VANDALIA	\$258,195.00	03/21/2012

21-000-0000-00(00)	REGIONAL OFFICE OF EDUCATION21	BENTON	\$180,626.00	03/21/2012
			\$438,821.00	

Program: 2012 - 4932, Title II - Teacher Quality

<u>RCDT</u>	<u>District Name</u>	<u>City</u>	<u>Budget Amt</u>	<u>Approval Date</u>
01-075-0100-26(00)	PIKELAND CUSD 10	PITTSFIELD	\$72,065.00	03/30/2012
02-044-0550-02(00)	VIENNA PUBLIC SCHOOL DIST 55	VIENNA	\$21,066.00	03/27/2012
02-077-1010-26(00)	MERIDIAN CUSD 101	MOUNDS	\$110,907.00	03/27/2012
02-091-0660-22(00)	DONGOLA CUSD 66	DONGOLA	\$10,855.00	03/27/2012
02-091-0840-26(00)	SHAWNEE CUSD 84	WOLF LAKE	\$33,639.00	03/05/2012
03-025-0500-26(00)	COMMUNITY UNIT SCHOOL DIST 50	TEUTOPOLIS	\$32,539.00	03/30/2012
04-004-2000-26(00)	NORTH BOONE CUD 200	POPLAR GROVE	\$40,957.00	03/21/2012
04-101-3210-26(00)	PECATONICA CUSD 321	PECATONICA	\$15,685.00	03/09/2012
05-016-0250-02(00)	ARLINGTON HEIGHTS SD 25	ARLINGTON HEIGH	\$106,711.00	03/09/2012
05-016-0540-04(00)	SCHAUMBURG CCSD 54	SCHAUMBURG	\$301,003.00	03/21/2012
05-016-0590-04(00)	COMMUNITY CONSOLIDATED SD 59	ARLINGTON HTS	\$165,673.00	03/21/2012
06-016-0790-02(00)	PENNOYER SD 79	NORRIDGE	\$9,036.00	03/30/2012
06-016-0800-02(00)	BOARD OF EDUCATION DISTRICT 80	NORRIDGE	\$29,507.00	03/27/2012
06-016-0810-02(00)	SCHILLER PARK SD 81	SCHILLER PARK	\$50,798.00	03/09/2012
06-016-0920-02(00)	LINDOP SD 92	BROADVIEW	\$6,639.00	03/27/2012
06-016-0970-02(00)	OAK PARK SD 97	OAK PARK	\$152,894.00	03/21/2012
07-016-113A-02(00)	LEMONT-BROMBEREK CSD 113A	LEMONT	\$59,349.00	03/19/2012
07-016-1240-02(00)	EVERGREEN PARK ESD 124	EVERGREEN PARK	\$67,497.00	03/16/2012
07-016-1250-02(00)	ATWOOD HEIGHTS DISTRICT 125	ALSIP	\$47,962.00	03/12/2012
07-016-1260-02(00)	ALSIP-HAZLGRN-OAKLWN SD 126	ALSIP	\$36,275.00	03/09/2012
07-016-1350-02(00)	ORLAND SD 135	ORLAND PARK	\$126,693.00	03/09/2012
07-016-1490-02(00)	DOLTON CUSD 149	CALUMET CITY	\$148,056.00	03/30/2012
07-016-1580-02(00)	LANSING SD 158	LANSING	\$76,921.00	03/28/2012
07-016-1620-02(00)	MATTESON ELEM SD 162	RIGHTON PARK	\$71,833.00	03/09/2012
07-016-1670-02(00)	BROOKWOOD SD 167	GLENWOOD	\$61,077.00	03/15/2012
07-016-1680-04(00)	COMMUNITY CONSOLIDATED S D 168	SAUK VILLAGE	\$122,445.00	03/15/2012
07-016-2060-17(00)	BLOOM TWP HSD 206	CHICAGO HEIGHTS	\$222,933.00	03/12/2012
07-016-2330-16(00)	HOMEWOOD FLOSSMOOR CHSD 233	FLOSSMOOR	\$35,143.00	03/19/2012
08-008-3140-26(00)	WEST CARROLL CUSD 314	THOMSON	\$83,753.00	03/05/2012
08-089-2010-26(00)	DAKOTA CUSD 201	DAKOTA	\$26,202.00	03/30/2012

08-089-2020-26(00)	LENA WINSLOW CUSD 202	LENA	\$35,397.00	03/30/2012
09-010-0010-26(00)	FISHER CUSD 1	FISHER	\$20,431.00	03/09/2012
09-010-0030-26(00)	COMMUNITY UNIT SCHOOL DIST 3	MAHOMET	\$61,326.00	03/16/2012
09-010-0040-26(00)	CHAMPAIGN CUSD 4	CHAMPAIGN	\$515,393.00	03/16/2012
09-010-1300-04(00)	THOMASBORO CCSD 130	THOMASBORO	\$13,151.00	03/28/2012
09-010-1930-17(00)	RANTOUL TWP HSD 193	RANTOUL	\$26,698.00	03/09/2012
10-011-0010-26(00)	MORRISONVILLE CUSD 1	MORRISONVILLE	\$7,217.00	03/28/2012
11-012-002C-26(00)	MARSHALL CUSD 2C	MARSHALL	\$47,040.00	03/27/2012
11-021-3060-26(00)	ARCOLA CUSD 306	ARCOLA	\$20,457.00	03/05/2012
12-040-0010-26(00)	JASPER COUNTY CUD 1	NEWTON	\$87,331.00	03/05/2012
12-080-0010-26(00)	EAST RICHLAND CUSD 1	OLNEY	\$119,222.00	03/27/2012
12-080-0020-26(00)	COUNTY OF RICHLAND	NOBLE	\$22,776.00	03/27/2012
13-014-0010-26(00)	CARLYLE CUSD 1	CARLYLE	\$114,517.00	03/30/2012
13-058-5010-26(00)	SANDOVAL CUSD 501	SANDOVAL	\$52,473.00	03/05/2012
13-058-7220-26(00)	ODIN PUBLIC SCHOOL DIST 722	ODIN	\$13,128.00	03/15/2012
13-095-0110-04(00)	IRVINGTON CCSD 11	IRVINGTON	\$7,082.00	03/30/2012
16-019-4250-26(00)	COMMUNITY UNIT DIST 425	SHABBONA	\$33,150.00	03/05/2012
16-019-4280-26(00)	DEKALB CUSD 428	DE KALB	\$188,049.00	03/27/2012
17-053-0900-17(00)	PONTIAC TWP HSD 90	PONTIAC	\$17,844.00	03/27/2012
17-064-0020-26(00)	LEROY CUSD 2	LE ROY	\$20,560.00	03/28/2012
17-064-0050-26(00)	MCLEAN COUNTY UD 5	NORMAL	\$429,570.00	03/05/2012
19-022-0040-02(00)	COUNTY OF DUPAGE SCHOOL DIST 4	ADDISON	\$184,904.00	03/28/2012
19-022-0120-02(00)	ROSELLE SD 12	ROSELLE	\$35,889.00	03/01/2012
19-022-0130-02(00)	BLOOMINGDALE SD 13	BLOOMINGDALE	\$39,417.00	03/09/2012
19-022-0530-02(00)	BUTLER SD 53	OAK BROOK	\$15,207.00	03/15/2012
19-022-0600-02(00)	MAERCKER SD 60	CLARENDON HILLS	\$45,670.00	03/19/2012
19-022-0610-02(00)	DARIEN SD 61	DARIEN	\$65,480.00	03/05/2012
19-022-0660-02(00)	CENTER CASS SD 66	DOWNERS GVE	\$14,151.00	03/16/2012
19-022-0860-17(00)	HINSDALE DIST 86	HINSDALE	\$72,578.00	03/30/2012
19-022-0880-16(00)	DUPAGE HSD 88	ADDISON	\$104,136.00	03/09/2012
19-022-1810-04(00)	COMM CONS SCH DIST 181	BURR RIDGE	\$105,971.00	03/30/2012
19-022-2010-26(00)	COMMUNITY UNIT SCHOOL DIST 201	WESTMONT	\$57,263.00	03/30/2012
19-022-2050-26(00)	ELMHURST SD 205	ELMHURST	\$190,877.00	03/05/2012
20-093-0170-24(00)	ALLENDALE CCSD 17	ALLENDALE	\$12,255.00	03/27/2012
20-096-0140-04(00)	GEFF CCSD 14	GEFF	\$1,932.00	03/22/2012
20-096-2250-16(00)	FAIRFIELD CHSD 225	FAIRFIELD	\$44,347.00	03/05/2012
20-097-0050-26(00)	CARMI-WHITE COUNTY CUSD 5	CARMI	\$91,910.00	03/28/2012

21-100-0030-26(00)	COMMUNITY UNIT DISTRICT NO 3	MARION	\$14,889.00	03/28/2012
24-032-002C-02(00)	MAZON-VERONA-KINSMAN ESD 2C	MAZON	\$15,350.00	03/15/2012
24-032-0540-02(00)	MORRIS SD 54	MORRIS	\$51,008.00	03/27/2012
24-032-0740-03(00)	SOUTH WILMINGTON CSD 74	SOUTH WILMINGTO	\$5,622.00	03/21/2012
24-032-0750-02(00)	BRACEVILLE SD 75	BRACEVILLE	\$20,480.00	03/28/2012
24-047-0880-26(00)	PLANO CUSD 88	PLANO	\$50,177.00	03/09/2012
25-033-0100-26(00)	HAMILTON CNTY CUSD 10	MCLEANSBORO	\$71,070.00	03/21/2012
25-041-2040-17(00)	WEBBER TOWNSHIP HSD 204	BLUFORD	\$7,688.00	03/27/2012
26-034-3070-16(00)	ILLINI WEST HSD 307	CARTHAGE	\$18,352.00	03/15/2012
26-034-3250-26(00)	NAUVOO-COLUSA CUSD 325	NAUVOO	\$9,656.00	03/05/2012
28-006-0980-02(00)	DALZELL SD 98	DALZELL	\$3,470.00	03/21/2012
28-006-5000-15(00)	PRINCETON TWP HSD 500	PRINCETON	\$18,939.00	03/30/2012
28-006-5020-17(00)	HALL TWP HSD 502	SPRING VALLEY	\$34,634.00	03/09/2012
30-039-1760-26(00)	TRICO CUSD 176	CAMPBELL HILL	\$63,185.00	03/27/2012
32-038-0040-26(00)	CENTRAL CUSD 4	CLIFTON	\$41,402.00	03/05/2012
34-049-0240-04(00)	MILLBURN CCSD 24	WADSWORTH	\$15,652.00	03/09/2012
34-049-0370-02(00)	GAVIN SD 37	INGLESIDE	\$70,438.00	03/19/2012
34-049-0600-26(00)	COMMUNITY UNIT SCHOOL DIST 60	WAUKEGAN	\$812,548.00	03/27/2012
34-049-0960-04(00)	KILDEER COUNTRYSIDE CCSD 96	BUFFALO GROVE	\$68,719.00	03/05/2012
34-049-1090-02(00)	DEERFIELD SD 109	DEERFIELD	\$86,252.00	03/19/2012
34-049-1170-16(00)	ANTIOCH C H S D 117	ANTIOCH	\$45,280.00	03/16/2012
34-049-1200-13(00)	CONSOLIDATED HS DIST 120	MUNDELEIN	\$54,817.00	03/07/2012
35-050-2800-17(00)	COUNTY OF LASALLE SCHL DIST 280	MENDOTA	\$17,904.00	03/27/2012
38-054-0210-26(00)	HARTSBURG EMDEN CUSD 21	HARTSBURG	\$17,663.00	03/30/2012
38-054-0230-26(00)	MOUNT PULASKI CUD 23	MOUNT PULASKI	\$12,371.00	03/28/2012
40-056-0070-26(00)	GILLESPIE CUSD 7	GILLESPIE	\$55,929.00	03/30/2012
40-056-0340-26(00)	NORTH MAC CUSD 34	GIRARD	\$86,493.00	03/27/2012
41-057-0090-26(00)	GRANITE CITY CUSD 9	GRANITE CITY	\$528,389.00	03/15/2012
41-057-0120-26(00)	MADISON CUSD 12	MADISON	\$192,157.00	03/15/2012
46-005-0010-26(00)	BROWN COUNTY CUSD 1	MOUNT STERLING	\$39,625.00	03/30/2012
46-069-0060-26(00)	WAVERLY CUSD 6	WAVERLY	\$37,499.00	03/30/2012
46-069-1170-22(00)	JACKSONVILLE SD 117	JACKSONVILLE	\$240,136.00	03/05/2012
47-052-2720-26(00)	AMBOY CUSD 272	AMBOY	\$32,705.00	03/27/2012
47-071-2310-04(00)	ROCHELLE CCD 231	ROCHELLE	\$74,164.00	03/19/2012
48-072-3090-26(00)	BRIMFIELD CUSD 309	BRIMFIELD	\$16,127.00	03/27/2012
48-072-3100-16(00)	LIMESTONE CHSD 310	BARTONVILLE	\$43,788.00	03/09/2012
48-072-3220-26(00)	ELMWOOD CUSD 322	ELMWOOD	\$26,622.00	03/09/2012

50-082-0770-16(00)	FREEBURG CHSD 77	FREEBURG	\$8,154.00	03/09/2012
50-082-1960-26(00)	DUPO CUSD 196	DUPO	\$40,728.00	03/15/2012
51-084-0050-26(00)	BALL CHATHAM CUSD 5	CHATHAM	\$49,284.00	03/30/2012
51-084-0100-26(00)	AUBURN CUSD 10	AUBURN	\$54,050.00	03/28/2012
53-090-3090-16(00)	COUNTY OF TAZEWELL SD 309	EAST PEORIA	\$55,633.00	03/27/2012
54-092-0110-26(00)	HOOPESTON AREA CUSD 11	HOOPESTON	\$67,439.00	03/15/2012
54-092-0120-26(00)	JAMAICA CUSD 12	SIDELL	\$31,036.00	03/12/2012
54-092-1180-24(00)	DANVILLE CCSD 118	DANVILLE	\$551,114.00	03/19/2012
55-098-0050-26(00)	COMMUNITY UNIT SCHOOL DISTRICT	STERLING	\$179,465.00	03/15/2012
55-098-0130-02(00)	ROCK FALLS ESD 13	ROCK FALLS	\$70,583.00	03/05/2012
55-098-3010-17(00)	ROCK FALLS TWP HSD 301	ROCK FALLS	\$26,173.00	03/27/2012
56-099-2020-22(00)	PLAINFIELD SD 202	PLAINFIELD	\$342,478.00	03/19/2012
56-099-2040-17(00)	JOLIET TWP HSD 204	JOLIET	\$239,969.00	03/28/2012
65-108-9020-80(00)	UNIVERSITY OF ILLINOIS LAB SCH	URBANA	\$2,770.00	03/27/2012
			\$10,000,988.00	

Program: 2012 - 4936, Mathematics and Science Partnerships

<u>RCDT</u>	<u>District Name</u>	<u>City</u>	<u>Budget Amt</u>	<u>Approval Date</u>
16-019-5430-51(40)	NORTHERN ILLINOIS UNIVERSITY	DE KALB	\$140,000.00	03/21/2012
17-064-5450-51(10)	ILLINOIS STATE UNIVERSITY	NORMAL	\$81,304.00	03/21/2012
17-064-5450-51(40)	ILLINOIS STATE UNIVERSITY	NORMAL	\$139,684.00	03/07/2012
26-062-5440-51(40)	WESTERN ILLINOIS UNIVERSITY	MACOMB	\$140,000.00	03/29/2012
28-000-0000-00(40)	REGIONAL OFFICE OF EDUCATION28	ATKINSON	\$115,676.00	03/07/2012
28-000-0000-00(41)	REGIONAL OFFICE OF EDUCATION28	ATKINSON	\$136,878.00	03/07/2012
41-057-029P-00(20)	SOUTHERN ILL UNIV-EDWARDSVILLE	EDWARDSVILLE	\$225,000.00	03/09/2012
41-057-029P-00(70)	SOUTHERN ILL UNIV-EDWARDSVILLE	EDWARDSVILLE	\$106,970.00	03/26/2012
49-000-0000-00(40)	REGIONAL OFFICE OF EDUCATION49	MOLINE	\$140,000.00	03/21/2012
65-108-5860-51(40)	BRADLEY UNIVERSITY	PEORIA	\$140,000.00	03/15/2012
			\$1,365,512.00	

Program: 2012 - 4972, Technology - Enhancing Education-Competitive

<u>RCDT</u>	<u>District Name</u>	<u>City</u>	<u>Budget Amt</u>	<u>Approval Date</u>
03-025-0100-26(00)	ALTAMONT CUSD 10	ALTAMONT	\$234,645.00	03/20/2012

03-026-2010-26(00)	BROWNSTOWN CUSD 201	BROWNSTOWN	\$225,719.00	03/21/2012
07-016-1670-02(00)	BROOKWOOD SD 167	GLENWOOD	\$188,970.00	03/06/2012
19-022-0160-02(00)	QUEEN BEE SD 16	GLENDALE HTS	\$190,984.00	03/21/2012
26-062-1850-26(00)	MACOMB CUSD 185	MACOMB	\$217,576.00	03/23/2012
28-006-1030-22(00)	DEPUE CUSD 103	DEPUE	\$183,376.00	03/06/2012
			\$1,241,270.00	

Program: 2012 - 4999, Other Federal Programs

<u>RCDT</u>	<u>District Name</u>	<u>City</u>	<u>Budget Amt</u>	<u>Approval Date</u>
32-046-1110-25(SR)	KANKAKEE SD 111	KANKAKEE	\$45,673.00	03/13/2012
54-092-1180-24(SR)	DANVILLE CCSD 118	DANVILLE	\$81,407.00	03/05/2012
			\$127,080.00	

ILLINOIS STATE BOARD OF EDUCATION
Financial Status Report
July 1, 2011 through March 31, 2012
(Fiscal Year 2012)

	Appropriation Amount	Expenditures to Date	Unexpended Appropriation	Percentage spent YTD	Percentage Unexpended
<u>General Revenue Fund</u>					
Personal Services and Related Expenditures	\$ 16,745,700	\$ 12,185,060	\$ 4,560,640	72.77%	27.23%
Contractual Services	4,500,000	2,399,720	2,100,280	53.33%	46.67%
Travel	232,450	69,246	163,204	29.79%	70.21%
Commodities	71,300	41,711	29,589	58.50%	41.50%
Printing	64,700	361	64,339	0.56%	99.44%
Equipment	132,200	46,887	85,314	35.47%	64.53%
Telecommunications	383,800	240,127	143,673	62.57%	37.43%
Operation of Automotive Equipment	23,800	10,982	12,818	46.14%	53.86%
Lump Sums	26,946,301	8,254,567	18,691,734	30.63%	69.37%
<i>Sub-total</i>	49,100,251	23,248,660	25,851,591	47.35%	52.65%
Awards and Grants	2,562,813,265	1,613,740,226	949,073,039	62.97%	37.03%
Total General Revenue Fund	\$ 2,611,913,516	\$ 1,636,988,886	\$ 974,924,630	62.67%	37.33%
<u>Education Assistance Fund</u>					
Awards and Grants	\$ 309,631,376	\$ 309,631,376	-	100.00%	0.00%
<u>Common School Fund</u>					
General State Aid	3,828,841,763	3,101,702,435	727,139,328	81.01%	18.99%
<u>Teacher Certification Fee Revolving Fund</u>					
Lump Sums	\$ 3,700,000	\$ 505,441	\$ 3,194,559	13.66%	86.34%

ILLINOIS STATE BOARD OF EDUCATION
Financial Status Report
July 1, 2011 through March 31, 2012
(Fiscal Year 2012)

	Appropriation Amount	Expenditures to Date	Unexpended Appropriation	Percentage spent YTD	Percentage Unexpended
<u>Drivers Education Fund</u>					
Personal Services and Related Expenditures	\$ 95,600	\$ 3,314	\$ 92,286	3.47%	96.53%
Awards and Grants	24,229,600	18,172,177	6,057,423	75.00%	25.00%
Total Drivers Education Fund	\$ 24,325,200	\$ 18,175,491	\$ 6,149,709	74.72%	25.28%
<u>School Dist. Emergency Financial Asst. Fund</u>					
Awards and Grants	\$ 1,000,000	\$ -	\$ 1,000,000	0.00%	100.00%
<u>SBE Special Purpose Trust Fund</u>					
Lump Sums	\$ 15,500,000	\$ 3,097,315	\$ 12,402,685	19.98%	80.02%
<u>SBE Teacher Certification Institution Fund</u>					
Lump Sums	\$ 2,208,900	\$ 2,628	\$ 2,206,272	0.12%	99.88%
<u>SBE Federal Department of Agriculture Fund</u>					
Personal Services and Related Expenditures	\$ 6,018,800	\$ 3,885,915	\$ 2,132,885	64.56%	35.44%
Contractual Services	3,910,000	929,195	2,980,805	23.76%	76.24%
Travel	400,000	153,352	246,648	38.34%	61.66%
Commodities	85,000	3,781	81,219	4.45%	95.55%
Printing	156,300	9,309	146,991	5.96%	94.04%
Equipment	250,000	199,706	50,294	79.88%	20.12%
Telecommunications	50,000	-	50,000	0.00%	100.00%
Sub-total	10,870,100	5,181,259	5,688,841	47.67%	52.33%
Awards and Grants	725,914,300	415,240,997	310,673,303	57.20%	42.80%
Total SBE Federal Department of Agriculture Fund	\$ 736,784,400	\$ 420,422,255	\$ 316,362,145	57.06%	42.94%

ILLINOIS STATE BOARD OF EDUCATION
Financial Status Report
July 1, 2011 through March 31, 2012
(Fiscal Year 2012)

	Appropriation Amount	Expenditures to Date	Unexpended Appropriation	Percentage spent YTD	Percentage Unexpended
<u>SBE Federal Agency Services Fund</u>					
Personal Services and Related Expenditures	\$ 175,000	\$ 91,686	\$ 83,314	52.39%	47.61%
Contractual Services	900,000	48,910	851,090	5.43%	94.57%
Travel	30,000	9,594	20,406	31.98%	68.02%
Commodities	20,000	-	20,000	0.00%	100.00%
Printing	700	-	700	0.00%	100.00%
Equipment	11,000	-	11,000	0.00%	100.00%
Telecommunications	9,000	-	9,000	0.00%	100.00%
<i>Sub-total</i>	<u>1,145,700</u>	<u>150,190</u>	<u>995,510</u>	<u>13.11%</u>	<u>86.89%</u>
Awards and Grants	<u>2,500,000</u>	<u>94,050</u>	<u>2,405,950</u>	<u>3.76%</u>	<u>96.24%</u>
Total SBE Federal Agency Services Fund	<u>\$ 3,645,700</u>	<u>\$ 244,240</u>	<u>\$ 3,401,460</u>	<u>6.70%</u>	<u>93.30%</u>
<u>SBE Federal Department of Education Fund</u>					
Personal Services and Related Expenditures	\$ 23,182,300	\$ 10,503,483	\$ 12,678,817	45.31%	54.69%
Contractual Services	19,400,000	4,334,646	15,065,354	22.34%	77.66%
Travel	1,600,000	360,437	1,239,563	22.53%	77.47%
Commodities	305,000	13,586	291,414	4.45%	95.55%
Printing	341,000	10,660	330,340	3.13%	96.87%
Equipment	455,000	61,006	393,994	13.41%	86.59%
Telecommunications	400,000	-	400,000	0.00%	100.00%
Lump Sums	23,780,300	16,299,774	7,480,526	68.54%	31.46%
<i>Sub-total</i>	<u>69,463,600</u>	<u>31,583,593</u>	<u>37,880,007</u>	<u>45.47%</u>	<u>54.53%</u>
Awards and Grants	<u>2,700,940,700</u>	<u>641,325,209</u>	<u>2,059,615,491</u>	<u>23.74%</u>	<u>76.26%</u>
Total SBE Federal Department of Education Fund	<u>\$ 2,770,404,300</u>	<u>\$ 672,908,802</u>	<u>\$ 2,097,495,498</u>	<u>24.29%</u>	<u>75.71%</u>
<u>Charter Schools Revolving Loan Program Fund</u>					
Awards and Grants	<u>\$ 20,000</u>	<u>\$ -</u>	<u>\$ 20,000</u>	<u>0.00%</u>	<u>100.00%</u>
<u>School Infrastructure Fund</u>					
Personal Services and Related Expenditures	<u>\$ 726,800</u>	<u>\$ 410,178</u>	<u>\$ 316,622</u>	<u>56.44%</u>	<u>43.56%</u>

ILLINOIS STATE BOARD OF EDUCATION
Financial Status Report
July 1, 2011 through March 31, 2012
(Fiscal Year 2012)

	Appropriation Amount	Expenditures to Date	Unexpended Appropriation	Percentage spent YTD	Percentage Unexpended
<u>School Technology Revolving Loan Program Fund</u>					
Awards and Grants	\$ 5,000,000	\$ 603,000	\$ 4,397,000	12.06%	87.94%
<u>Temporary Relocation Expenses Revolving Grant Fund</u>					
Awards and Grants	\$ 1,400,000	\$ -	\$ 1,400,000	0.00%	100.00%
<u>Capital Development Fund</u>					
Grants for Educational Purposes	\$ 25,000,000	\$ -	\$ 25,000,000	0.00%	100.00%
<u>School Construction Fund</u>					
Construction Grants	\$ 100,000,000	\$ -	\$ 100,000,000	0.00%	100.00%
<u>Build Illinois Bond Fund</u>					
Construction Grants	\$ 1,459,964	\$ 1,040,345	\$ 419,619	71.26%	28.74%
<u>U.S. Dept. of Education Jobs Program Federal Trust Fund</u>					
Awards and Grants	\$ 163,000,000	\$ 87,480,307	\$ 75,519,693	53.67%	46.33%
<u>Personal Property Tax Replacement Fund</u>					
Awards and Grants	\$ 2,225,050	\$ 1,424,278	\$ 800,772	64.01%	35.99%
Grants for Educational Purposes	10,806,400	6,854,886	3,951,514	63.43%	36.57%
Total Personal Property Tax Replacement Fund	\$ 13,031,450	\$ 8,279,164	\$ 4,752,286	63.53%	36.47%
ISBE TOTALS	\$ 10,617,593,369	\$ 6,261,491,864	\$ 4,356,101,505	58.97%	41.03%

ILLINOIS STATE BOARD OF EDUCATION
Combined Financial Status Report
July 1, 2011 through March 31, 2012
(Fiscal Year 2012)

	Appropriation Amount	Expenditures to Date (Direct)	Federal Indirect Cost Recovery Expenditures	Unexpended Appropriation	Percentage spent YTD	Percentage Unexpended
All Funds						
Personal Services and Related Expenditures	\$ 48,982,503	\$ 27,079,635	\$ 2,038,303	\$ 19,864,565	55.28%	40.55%
Contractual Services	29,131,580	7,712,471	421,580	20,997,529	26.47%	72.08%
Travel	2,276,260	592,629	13,810	1,669,821	26.04%	73.36%
Commodities	502,017	59,078	20,717	422,222	11.77%	84.11%
Printing	584,060	20,330	21,360	542,370	3.48%	92.86%
Equipment	941,317	307,599	93,117	540,601	32.68%	57.43%
Telecommunications	860,274	240,127	17,474	602,673	27.91%	70.06%
Operation of Automotive Equipment	23,800	10,982	-	12,818	46.14%	53.86%
Lump Sums	69,509,140	25,533,365	-	43,975,776	36.73%	63.27%
<i>Sub-total</i>	152,810,951	64,182,578	2,626,361	88,628,373	42.00%	58.00%
Awards and Grants	10,363,322,454	6,196,268,941	-	4,167,053,513	59.79%	40.21%
Construction Grants	101,459,964	1,040,345	-	100,419,619	1.03%	98.97%
Total All Funds	\$ 10,617,593,369	\$ 6,258,865,503	\$ 2,626,361	\$ 4,356,101,505	58.95%	41.03%

General Revenue Fund

Personal Services and Related Expenditures	\$ 16,745,700	\$ 12,185,060	\$ -	\$ 4,560,640	72.77%	27.23%
Contractual Services	4,500,000	2,399,720	-	2,100,280	53.33%	46.67%
Travel	232,450	69,246	-	163,204	29.79%	70.21%
Commodities	71,300	41,711	-	29,589	58.50%	41.50%
Printing	64,700	361	-	64,339	0.56%	99.44%
Equipment	132,200	46,887	-	85,314	35.47%	64.53%
Telecommunications	383,800	240,127	-	143,673	62.57%	37.43%
Operation of Automotive Equipment	23,800	10,982	-	12,818	46.14%	53.86%
Lump Sums	26,946,301	8,254,567	-	18,691,734	30.63%	69.37%
<i>Sub-total</i>	49,100,251	23,248,660	-	25,851,591	47.35%	52.65%
Awards and Grants	2,562,813,265	1,613,740,226	-	949,073,039	62.97%	37.03%
Total General Revenue Fund	\$ 2,611,913,516	\$ 1,636,988,886	\$ -	\$ 974,924,630	62.67%	37.33%

Other State Funds

Personal Services and Related Expenditures	\$ 822,400	\$ 413,492	\$ -	\$ 408,908	50.28%	49.72%
Lump Sums	21,408,900	3,605,384	-	17,803,516	16.84%	83.16%
<i>Sub-total</i>	22,231,300	4,018,876	-	18,212,424	18.08%	81.92%
Awards and Grants	4,208,154,189	3,438,388,152	-	769,766,037	81.71%	18.29%
Construction Grants	101,459,964	1,040,345	-	100,419,619	1.03%	98.97%
Total Other State Funds	\$ 4,331,845,453	\$ 3,443,447,373	\$ -	\$ 888,398,080	79.49%	20.51%

Federal Funds

Personal Services and Related Expenditures	\$ 29,376,100	\$ 14,481,084	\$ -	\$ 14,895,016	49.30%	50.70%
Contractual Services	24,210,000	5,312,752	-	18,897,248	21.94%	78.06%
Travel	2,030,000	523,384	-	1,506,616	25.78%	74.22%
Commodities	410,000	17,367	-	392,633	4.24%	95.76%
Printing	498,000	19,969	-	478,031	4.01%	95.99%
Equipment	716,000	260,713	-	455,287	36.41%	63.59%
Telecommunications	459,000	-	-	459,000	0.00%	100.00%
Lump Sums	23,780,300	16,299,774	-	7,480,526	68.54%	31.46%
<i>Sub-total</i>	81,479,400	36,915,042	-	44,564,358	45.31%	54.69%
Awards and Grants	3,592,355,000	1,144,140,563	-	2,448,214,437	31.85%	68.15%
Total Federal Funds	\$ 3,673,834,400	\$ 1,181,055,605	\$ -	\$ 2,492,778,795	32.15%	67.85%

ILLINOIS STATE BOARD OF EDUCATION
Awards and Grants Expenditures
July 1, 2011 through March 31, 2012
(Fiscal Year 2012)

	Appropriation Amount	Expenditures to Date	Unexpended Appropriation	Percentage spent YTD	Percentage Unexpended
<u>General Revenue Fund</u>					
General State Aid	\$ 309,631,375	\$ -	\$ 309,631,375	0.00%	100.00%
Agriculture Education	1,800,000	1,429,354	370,646	79.41%	20.59%
Arts and Foreign Language	1,000,000	662,843	337,157	66.28%	33.72%
Bilingual Education	62,497,807	18,047,921	44,449,886	28.88%	71.12%
Vocational Education Career and Technical Education	38,562,100	31,854,222	6,707,878	82.60%	17.40%
Early Childhood Education	320,573,700	229,882,434	90,691,266	71.71%	28.29%
Technology for Success	1,800,000	1,403,424	396,576	77.97%	22.03%
ROE School Bus Driver Training	70,000	70,000	-	100.00%	0.00%
Autism Training & Technical Assistance	100,000	77,777	22,223	77.78%	22.22%
Recording for Blind and Dyslexic	816,600	816,600	-	100.00%	0.00%
Children's Mental Health Partnership	1,458,000	1,187,311	270,689	81.43%	18.57%
Educational Materials Unit	1,421,100	1,075,000	346,100	75.65%	24.35%
Philip Rock Center Reimbursement	3,577,800	2,900,000	677,800	81.06%	18.94%
Alternative Education	9,341,900	7,132,684	2,209,216	76.35%	23.65%
Truant Alternative/Optional Education	14,059,000	11,249,490	2,809,510	80.02%	19.98%
National Board Certification Reimbursement	1,000,000	-	1,000,000	0.00%	100.00%
Teach America	1,225,000	586,899	638,101	47.91%	52.09%
Reorganization Incentive	1,800,000	1,593,037	206,963	88.50%	11.50%
Special Education-Private Tuition	177,743,700	154,814,768	22,928,932	87.10%	12.90%
Special Education-Extraordinary	343,375,700	282,598,200	60,777,500	82.30%	17.70%
Special Education-Personnel	465,700,000	360,901,777	104,798,223	77.50%	22.50%
Special Education-Orphanage Tuition	101,700,000	66,760,426	34,939,574	65.64%	34.36%
Transportation-Regular/Vocational	205,808,850	156,350,031	49,458,819	75.97%	24.03%
Transportation-Special Education	436,800,000	239,251,251	197,548,749	54.77%	45.23%
Free Lunch/Breakfast	26,300,000	21,182,055	5,117,945	80.54%	19.46%
Orphanage Tuition	13,000,000	6,838,838	6,161,162	52.61%	47.39%
Special Education-Summer School	11,200,000	10,749,986	450,014	95.98%	4.02%
Lowest Performing Schools	948,800	-	948,800	0.00%	100.00%
Tax Equivalent Grants	222,600	222,600	-	100.00%	0.00%
After School Matters	2,500,000	1,020,000	1,480,000	40.80%	59.20%
Total General Revenue Fund	\$ 2,556,034,032	\$ 1,610,658,926	\$ 945,375,106	63.01%	36.99%
<u>Education Assistance Fund</u>					
General State Aid	\$ 309,631,376	\$ 309,631,376	\$ -	100.00%	0.00%
Total Education Assistance Fund	\$ 309,631,376	\$ 309,631,376	\$ -	100.00%	0.00%

ILLINOIS STATE BOARD OF EDUCATION
Awards and Grants Expenditures
July 1, 2011 through March 31, 2012
(Fiscal Year 2012)

	Appropriation Amount	Expenditures to Date	Unexpended Appropriation	Percentage spent YTD	Percentage Unexpended
<u>Common School Fund</u>					
General State Aid	3,828,841,763	3,101,702,435	727,139,328	81.01%	18.99%
Total Common School Fund	\$ 3,828,841,763	\$ 3,101,702,435	\$ 727,139,328	81.01%	18.99%
<u>Drivers Education Fund</u>					
Driver Education Grants	\$ 24,229,600	\$ 18,172,177	\$ 6,057,423	75.00%	25.00%
Total Drivers Education Fund	\$ 24,229,600	\$ 18,172,177	\$ 6,057,423	75.00%	25.00%
<u>School Dist. Emergency Financial Asst. Fund</u>					
School District Emergency Financial Assistance	\$ 1,000,000	\$ -	\$ 1,000,000	0.00%	100.00%
Total School Dist. Emergency Fin. Asst. Fund	\$ 1,000,000	\$ -	\$ 1,000,000	0.00%	100.00%
<u>SBE Federal Department of Agriculture Fund</u>					
Federal Nutrition Programs	\$ 724,801,300	\$ 415,042,266	\$ 309,759,034	57.26%	42.74%
ARRA	914,300	-	914,300	0.00%	100.00%
Total SBE Federal Department of Agriculture Fund	\$ 725,715,600	\$ 415,042,266	\$ 310,673,334	57.19%	42.81%
<u>SBE Federal Agency Services Fund</u>					
Learn and Serve America	\$ 2,500,000	\$ 94,050	\$ 2,405,950	3.76%	96.24%
Total SBE Federal Agency Services Fund	\$ 2,500,000	\$ 94,050	\$ 2,405,950	3.76%	96.24%

ILLINOIS STATE BOARD OF EDUCATION
Awards and Grants Expenditures
July 1, 2011 through March 31, 2012
(Fiscal Year 2012)

	Appropriation Amount	Expenditures to Date	Unexpended Appropriation	Percentage spent YTD	Percentage Unexpended
<u>SBE Federal Department of Education Fund</u>					
Title VI Rural and Low Income Students	\$ 2,000,000	\$ 479,631	\$ 1,520,369	23.98%	76.02%
Race to the Top	45,000,000	725,000	44,275,000	1.61%	98.39%
Title III - English Language Acquisition	40,000,000	4,665,681	35,334,319	11.66%	88.34%
ONPAR	2,000,000	-	2,000,000	0.00%	100.00%
Enhancing Education Through Technology	20,000,000	152,444	19,847,556	0.76%	99.24%
Charter Schools	9,000,000	488,383	8,511,617	5.43%	94.57%
Advanced Placement Fee	3,000,000	1,872,589	1,127,411	62.42%	37.58%
Title I - Basic	750,000,000	230,758,663	519,241,337	30.77%	69.23%
Title IV - Safe & Drug Free Schools	15,000,000	22,500	14,977,500	0.15%	99.85%
Title IV - 21st Century/Community Service	60,500,000	14,486,865	46,013,135	23.95%	76.05%
Title II - Teacher Quality	157,000,000	31,737,580	125,262,420	20.22%	79.78%
Title II - Math/Science Partnerships	12,000,000	1,240,767	10,759,233	10.34%	89.66%
Title X - McKinney Homeless	5,000,000	1,469,872	3,530,128	29.40%	70.60%
Longitudinal Data Systems	4,983,500	-	4,983,500	0.00%	100.00%
IDEA - Preschool	25,000,000	7,544,425	17,455,575	30.18%	69.82%
IDEA - Improvement	3,700,000	811,212	2,888,788	21.92%	78.08%
IDEA	650,000,000	257,242,189	392,757,811	39.58%	60.42%
IDEA - Model Outreach	400,000	-	400,000	0.00%	100.00%
IDEA - Deaf/Blind	450,000	205,609	244,391	45.69%	54.31%
Career and Technical Education - Basic Perkins	55,000,000	17,656,079	37,343,921	32.10%	67.90%
Career and Technical Education - Tech Prep	5,000,000	10,004	4,989,996	0.20%	99.80%
Special Federal Congressional Initiatives	1,870,500	-	1,870,500	0.00%	100.00%
Striving Readers	49,653,900	30,202	49,623,698	0.06%	99.94%
Title I ARRA	381,125,200	33,331,687	347,793,513	8.75%	91.25%
IDEA ARRA	354,535,900	31,751,992	322,783,908	8.96%	91.04%
IDEA Preschool ARRA	12,818,000	838,808	11,979,192	6.54%	93.46%
Enhancing Education Through Technology-ARRA	17,739,077	1,327,156	16,411,921	7.48%	92.52%
Title X-Homeless Education ARRA	645,400	26,128	619,272	4.05%	95.95%
Total SBE Federal Department of Education Fund	\$ 2,683,421,477	\$ 638,875,466	\$ 2,044,546,011	23.81%	76.19%
<u>Charter Schools Revolving Loan Program Fund</u>					
Charter Schools Revolving Loans	\$ 20,000	\$ -	\$ 20,000	0.00%	100.00%
Total Charter Schools Rev. Loan Program Fund	\$ 20,000	\$ -	\$ 20,000	0.00%	100.00%

ILLINOIS STATE BOARD OF EDUCATION
Awards and Grants Expenditures
July 1, 2011 through March 31, 2012
(Fiscal Year 2012)

	Appropriation Amount	Expenditures to Date	Unexpended Appropriation	Percentage spent YTD	Percentage Unexpended
<u>School Technology Revolving Loan Program Fund</u>					
School Technology Revolving Loans	\$ 5,000,000	\$ 603,000	\$ 4,397,000	12.06%	87.94%
Total School Technology Rev. Loan Program Fund	\$ 5,000,000	\$ 603,000	\$ 4,397,000	12.06%	87.94%
<u>Temporary Relocation Expenses Revolving Grant Fund</u>					
Temporary Relocation Revolving Loans/Grants	\$ 1,400,000	\$ -	\$ 1,400,000	0.00%	100.00%
Total Temporary Relocation Exp. Rev. Grant Fund	\$ 1,400,000	\$ -	\$ 1,400,000	0.00%	100.00%
<u>Capital Development Fund</u>					
Grants for Educational Purposes	\$ 25,000,000	\$ -	\$ 25,000,000	0.00%	100.00%
Total Capital Development Fund	\$ 25,000,000	\$ -	\$ 25,000,000	0.00%	100.00%
<u>School Construction Fund</u>					
Construction Grants	\$ 100,000,000	\$ -	\$ 100,000,000	0.00%	100.00%
Total School Construction Fund	\$ 100,000,000	\$ -	\$ 100,000,000	0.00%	100.00%
<u>Build Illinois Bond Fund</u>					
Construction Grants	\$ 1,460,000	\$ 1,040,345	\$ 419,655	71.26%	28.74%
Total Build Illinois Bond Fund	\$ 1,460,000	\$ 1,040,345	\$ 419,655	71.26%	28.74%
<u>U.S. Dept. of Education Jobs Program Federal Trust Fund</u>					
Awards and Grants	\$ 163,000,000	\$ 87,480,307	\$ 75,519,693	53.67%	46.33%
Total U.S. Dept. of Education Jobs Program Fed. Trust Fund	\$ 163,000,000	\$ 87,480,307	\$ 75,519,693	53.67%	46.33%

ILLINOIS STATE BOARD OF EDUCATION
Awards and Grants Expenditures
July 1, 2011 through March 31, 2012
(Fiscal Year 2012)

	Appropriation Amount	Expenditures to Date	Unexpended Appropriation	Percentage spent YTD	Percentage Unexpended
<i>Personal Property Tax Replacement Fund</i>					
Awards and Grants	\$ 2,135,800	\$ 1,424,278	\$ 711,522	66.69%	33.31%
Grants for Educational Purposes	10,806,400	6,854,886	3,951,514	63.43%	36.57%
Total Personal Property Tax Replacement Fund	\$ 12,942,200	\$ 8,279,164	\$ 4,663,036	63.97%	36.03%
TOTAL AWARDS AND GRANTS - ALL FUNDS	\$ 10,440,196,048	\$ 6,191,579,513	\$ 4,248,616,535	59.31%	40.69%

ILLINOIS STATE BOARD OF EDUCATION
Comparative Statement of Expenditures to Date (March 31)
Fiscal Years 2012 and 2011

	FY12				FY11			
	Appropriation Amount	Expenditures to Date (Direct)	Federal Indirect Cost Recovery Expenditures	Percentage to Date	Appropriation Amount	Expenditures to Date (Direct)	Federal Indirect Cost Recovery Expenditures	Percentage to Date
All Funds								
Personal Services and Related Expenditures	\$ 48,982,503	\$ 27,079,635	\$ 2,038,303	59.45%	\$ 45,668,955	\$ 27,142,496	\$ 2,069,555	59.43%
Contractual Services	29,131,580	7,712,471	421,580	27.92%	31,012,261	9,356,712	695,061	30.17%
Travel	2,276,260	592,629	13,810	26.64%	2,376,325	673,573	13,825	28.35%
Commodities	502,017	59,078	20,717	15.89%	498,704	43,696	13,704	8.76%
Printing	584,060	20,330	21,360	7.14%	586,500	1,057	-	0.18%
Equipment	941,317	307,599	93,117	42.57%	777,497	108,424	72,597	13.95%
Telecommunications	860,274	240,127	17,474	29.94%	865,715	229,721	31,415	26.54%
Operation of Automotive Equipment	23,800	10,982	-	46.14%	23,800	10,867	-	45.66%
Lump Sums	69,509,140	25,533,365	-	36.73%	43,105,543	16,200,387	-	37.58%
Sub-total	152,810,951	61,556,217	2,626,361	42.00%	124,915,300	53,766,933	2,896,157	43.04%
Awards and Grants	10,363,322,454	6,196,268,941	-	59.79%	11,516,327,141	6,356,370,775	-	55.19%
Construction Grants	101,459,964	1,040,345	-	1.03%	-	-	-	0.00%
Total All Funds	\$ 10,617,593,369	\$ 6,258,865,503	\$ 2,626,361	58.97%	\$ 11,641,242,441	\$ 6,410,137,708	\$ 2,896,157	55.06%
General Revenue Fund								
Personal Services and Related Expenditures	\$ 16,745,700	\$ 12,185,060	\$ -	72.77%	\$ 16,745,700	\$ 12,183,552	\$ -	72.76%
Contractual Services	4,500,000	2,399,720	-	53.33%	6,007,200	3,574,840	-	59.51%
Travel	232,450	69,246	-	29.79%	332,500	150,965	-	45.40%
Commodities	71,300	41,711	-	58.50%	75,000	37,859	-	50.48%
Printing	64,700	361	-	0.56%	88,500	1,057	-	1.19%
Equipment	132,200	46,887	-	35.47%	88,900	41,536	-	46.72%
Telecommunications	383,800	240,127	-	62.57%	375,300	229,721	-	61.21%
Operation of Automotive Equipment	23,800	10,982	-	46.14%	23,800	10,867	-	45.66%
Lump Sums	26,946,301	8,254,567	-	30.63%	812,500	384,154	-	47.28%
Sub-total	49,100,251	23,248,660	-	47.35%	24,549,400	16,614,551	-	67.68%
Awards and Grants	2,562,813,265	1,613,740,226	-	62.97%	2,385,806,700	1,652,742,537	-	69.27%
Total General Revenue Fund	\$ 2,611,913,516	\$ 1,636,988,886	\$ -	62.67%	\$ 2,410,356,100	\$ 1,669,357,088	\$ -	69.26%
Other State Funds								
Personal Services and Related Expenditures	\$ 822,400	\$ 413,492	\$ -	50.28%	\$ 815,400	\$ 244,244	\$ -	29.95%
Lump Sums	21,408,900	3,605,384	-	16.84%	21,408,900	3,645,148	-	17.03%
Sub-total	22,231,300	4,018,876	-	18.08%	22,224,300	3,889,392	-	17.50%
Awards and Grants	4,208,154,189	3,438,388,152	-	81.71%	4,666,054,700	3,374,627,325	-	72.32%
Construction Grants	101,459,964	1,040,345	-	-	110,000,000	-	-	0.00%
Total Other State Funds	\$ 4,331,845,453	\$ 3,443,447,373	\$ -	79.49%	\$ 4,798,279,000	\$ 3,378,516,717	\$ -	70.41%
Federal Funds								
Personal Services and Related Expenditures	\$ 29,376,100	\$ 14,481,084	\$ -	49.30%	\$ 26,038,300	\$ 14,714,700	\$ -	56.51%
Contractual Services	24,210,000	5,312,752	-	21.94%	24,310,000	5,781,872	-	23.78%
Travel	2,030,000	523,384	-	25.78%	2,030,000	522,608	-	25.74%
Commodities	410,000	17,367	-	4.24%	410,000	5,837	-	1.42%
Printing	498,000	19,969	-	4.01%	498,000	-	-	0.00%
Equipment	716,000	260,713	-	36.41%	616,000	66,888	-	10.86%
Telecommunications	459,000	-	-	0.00%	459,000	-	-	0.00%
Lump Sums	23,780,300	16,299,774	-	68.54%	23,780,300	15,067,242	-	63.36%
Sub-total	81,479,400	36,915,042	-	45.31%	78,141,600	36,159,147	-	46.27%
Awards and Grants	3,592,355,000	1,144,140,563	-	31.85%	4,464,465,741	1,329,000,913	-	29.77%
Total Federal Funds	\$ 3,673,834,400	\$ 1,181,055,605	\$ -	32.15%	\$ 4,542,607,341	\$ 1,365,160,060	\$ -	30.05%

**ILLINOIS STATE BOARD OF EDUCATION
FINANCIAL STATUS REPORT - 07/01/2011 THROUGH 3/31/2012
FY2012**

	<u>Funded Amount</u>	<u>Expended Year to Date</u>	<u>% Spent Year to Date</u>	<u>March Expenditures</u>	<u>Description</u>
Personal Services and Related	52,792.6	30,108.1	57.0%	8,634.3	Salaries & Benefits
Contractual Services	233,128.6	38,652.2	16.6%	3,516.6	Agency Contracts (see below); Non-Employee Travel; Conferences; Registration Fees
Travel	2,528.0	693.5	27.4%	100.9	Staff Travel
Commodities	737.0	80.5	10.9%	19.4	Supplies; Books
Printing	766.0	44.0	5.7%	30.7	Agency Printing
Equipment	1,077.4	459.9	42.7%	28.4	Computers; Printers; Furniture
Telecommunications	1,006.5	260.4	25.9%	36.1	Telecommunications Expenses
Auto Operations	23.8	11.0	46.2%	1.8	Operation of Agency Autos
Prompt Payment Act	2.8	0.0	0.0%	0.0	Prompt Payment
Refunds	0.3	0.3	100.0%	0.0	Refunds
Temp. Relocation Revolving Fund	1,000.0	0.0	0.0%	0.0	Interfund Cash Transfer
Grants	10,087,767.5	6,102,532.6	60.5%	953,271.1	See Detail Below
School Construction Grants	126,460.0	1,040.3	0.8%	0.0	School Construction Funds

	<u>Funded Amount</u>	<u>Expended Year to Date</u>	<u>% Spent Year to Date</u>	<u>March Expenditures</u>	<u>Description</u>
Agency Contracts Breakdown:					
<u>State Superintendent</u>					
John Perkins					School District Liaison
GRF	48.5	24	49.50%	0	
Federal	21.5	21.5	100.00%	0	
University of Illinois					Provide oversight and coordination for on-going and emerging board priorities, advise Superintendent on agency wide matters and perform other tasks and duties as assigned by the State Superintendent
GRF	142.4	59.3	41.60%	0	
<u>Human Resources</u>					
K & L Gates LLP (formerly Bell, Boyd and Lloyd)					Arbitration matters
GRF	75.0	4.3	5.70%	0.5	
Other State	75.0	0	0.00%	0	
<u>Administrative Services</u>					
Alzina					Building lease in Springfield
GRF	1,353.6	1,033.80	76.40%	103.4	
Other State	255.7	195.3	76.40%	19.5	
Federal	730.7	558.1	76.40%	55.8	
Xerox Corp					Copier Maintenance Repairs
GRF	92.5	55.9	60.40%	6.7	
Other State	92.5	0	0.00%	0	

	<u>Funded Amount</u>	<u>Expended Year to Date</u>	<u>% Spent Year to Date</u>	<u>March Expenditures</u>	<u>Description</u>
Facilities Management					Rent for Chicago Office, Thompson Center
GRF	105.2	101.9	96.90%	0	
Other State	5.5	1.1	20.00%	0	
Federal	180.6	85.1	47.10%	23.5	
<u>General Counsel/Legal</u>					
37 Impartial Hearing Officers					Teacher Dismissal Hearing Officers
GRF	154.1	41.7	27.10%	4.7	
Franczek, Sullivan PC					Attorney General's Office appointed Res Vazquez to continue as Legal Counsel for the ongoing implementation and monitoring of the Corey H. consent decree
GRF	70.0	62.3	89.00%	6.7	
Shefsky & Froelich LTD					Prosecution of Educator misconduct cases and any other cases ISBE may request
GRF	184.0	91.8	49.90%	10.3	
Sandberg, Phoenix & Von Gontard					Serve as "Inspector General" for E. St. Louis School District #189
Other State	300.0	291.1	97.00%	217.3	
<u>Data Systems</u>					
IBM					Development of Statewide Student Information System
GRF	767.5	510	66.40%	0	
Federal	1,781.5	755.8	42.40%	320.8	
Utilistar					Data analysis and reporting for Supplemental Education Services
Federal	60.0	0	0.00%	0	
Capitol Strategies					Programmer for Child Nutrition/ ACES - MY07211
Federal	154.4	99.7	64.60%	11	
Capitol Strategies					Programmer for Entity System - MY07212
GRF	153.4	90.5	59.00%	18.1	
Capitol Strategies					Two Programmers for Child Nutrition System - MY08212
Federal	318.7	200.5	62.90%	24.9	
Ashbaugh & Associates					Programmer for Teacher Certification Information System and Educator Certification System MY09212
Other State	158.4	94.7	59.80%	6.4	
Hupp Information Technologies					Programmer for support of EDFacts/EDEN
Other State	7.8	2.6	33.30%	0	
Federal	89.7	29.3	32.70%	3.1	
LEAD IT Corporation					Programmer for Attendance & Cost Allocation System - MY10211 (The company name changed - it was formerly Moon Technology Systems)
GRF	30.3	30.3	100.00%	2	
Other State	6.6	1.7	25.80%	1.7	
Federal	23.6	23.6	100.00%	7.2	
IO Datasphere Inc.					Programmer for Attendance and Cost Allocation System - MY10212
GRF	36.7	36.7	100.00%	0	
Other State	7.8	7.8	100.00%	0	
Federal	28.7	28.7	100.00%	0	
Ashbaugh & Associates					Two programmers for the Special Education Data System - MY11214
Federal	296.8	184	62.00%	12.7	
Ashbaugh & Associates					Two programmers for Child Nutrition (CNS), Claim Entry System (ACES) and LAN based Child Nutrition System - MY11211
Federal	318.7	171.6	53.80%	12	

	<u>Funded Amount</u>	<u>Expended Year to Date</u>	<u>% Spent Year to Date</u>	<u>March Expenditures</u>	<u>Description</u>
LEAD IT Corporation					One programmer for Child Nutrition (CNS), Claim Entry System (ACES) and LAN based Child Nutrition System - MY11212
Federal	123.5	73	59.10%	8.7	
Marucco Stoddard, Ferenbach & Walsh (MSF&W)					One lead programmer for Child Nutrition (CNS), Claim Entry System (ACES) and LAN based Child Nutrition System - MY11213
Federal	158.4	90.7	57.30%	11.4	
IBM					Will provide one Skill Level 3 Programmer Analyst for the ILDS application project
Federal	110.0	0	0.00%	0	
IBM					Will provide one Skill Level 3 Programmer Analyst for the ILDS application project
Federal	110.0	0	0.00%	0	
IBM					Will provide one Skill Level 3 Programmer Analyst for the ILDS application project
Federal	104.8	0	0.00%	0	
IBM					Will provide one Skill Level 3 Programmer Analyst for the ILDS application project
Federal	100.0	0	0.00%	0	
<u>Technology Support</u>					
Dell Marketing LP					CMS master lease agreement - Third year of a five-year installment purchase agreement for a Storage Area Network, server products and components
GRF	132.4	132.4	100.00%	0	
Other State	114.0	114	100.00%	0	
Federal	76.8	76.8	100.00%	0	
<u>Career Development & Preparation</u>					
EvalSolutions, Inc.					Evaluation and Research of Illinois Math & Science Partnerships Program
Federal	90.1	42.3	46.90%	0	
Sangamon County ROE					Staff support for Illinois Mathematics and Science Partnership Program and Enhancing Education Through Technology as well as other statewide initiatives
Federal	143.0	83.5	58.40%	0	
<u>Early Childhood</u>					
Hupp Information Technologies					Programmer for Early Childhood Block Grant Program
GRF	80.0	44.1	55.10%	6.2	
National Louis University					Third party monitoring of Early Childhood Block Grant Programs
GRF	853.8	526.9	61.70%	0	
Erikson Institute					Early Childhood Evaluation
GRF	400.0	300	75.00%	0	
IL Department of Human Services					Gateways to Opportunities Scholarship Program for Early Childhood
GRF	500.0	500	100.00%	0	
<u>English Language Learning</u>					
Illinois Migrant Council					Support & technical assistance to the Migrant Education Program
Federal	409.2	343.3	83.90%	36.9	
University of Wisconsin					Will create academic Spanish language development standards for grades PreK-12 and develop technology mediated assessments for grades PreK-12
Federal	1,818.8	44.8	2.50%	30.7	
Illinois Resource Center					Statewide professional development
GRF	868.4	144.7	16.70%	0	
Federal	125.0	0	0.00%	0	

	<u>Funded Amount</u>	<u>Expended Year to Date</u>	<u>% Spent Year to Date</u>	<u>March Expenditures</u>	<u>Description</u>
<u>Special Education Services</u>					
11 Hearing Officers					Impartial Hearing Officers in the local-level - Section 14-8.02 of the School Code
Federal	380.9	294.3	77.30%	43	
9 Mediation Officers					Special Education mediation services
Federal	90.0	62.1	69.00%	9.3	
Joyce Eckrem					Training and on-going staff development for Due Process Hearing Officers
Federal	135.0	83.3	61.70%	10.4	
ROE # 20					Harrisburg Project - Manage software for special education districts and co-ops
Federal	248.6	248.6	100.00%	0	
Gail Imobersteg					Evaluation of Special Education Impartial Hearing Officers
Federal	50.0	33.3	66.60%	4.2	
Loyola University					Assist in implementation of evaluation of special education programs
GRF	61.8	36.1	58.40%	5.2	
Alert IT Services					ARRA - Job S020 - Special Education Maintenance of Effort
Federal	19.8	18.6	93.90%	0	
Measurement Incorporated					Special Education parent survey
Federal	65.0	0	0.00%	0	
Capitol Strategies Consulting					Maintain Special Education Database System
Federal	139.5	46.1	33.00%	10.2	
Illinois State University					Evaluation services for the 5 year State Personnel Development Grant
Federal	131.2	29.2	22.30%	29.2	
IL Caucus for Adolescent Health					HIV Prevention Education Training
Federal	60.0	30	50.00%	0	
Peoria County ROE					Administer, plan and implement the IL Virtual School (IVS) Program
Federal	250.0	250	100.00%	0	
GRF	1,200.0	800	66.70%	100	
The Center: Resources for Teaching and Learning					Technical assistance with the McKinney-Vento Homeless Education Program
Federal	175.0	105	60.00%	35	
EvalSolutions, Inc.					External evaluator for the Enhancing Education Through Technology (EETT) program
Federal	45.9	45.9	100.00%	0	
Maywood-Melrose PK Broadview 89					Children's Low-cost laptop program
Other State	290.2	290.2	100.00%	0	
ROE # 20 Harrisburg					Harrisburg Project - Manage software for special education districts and co-ops
Federal	478.3	239.2	50.00%	59.8	
Chicago District 299					Children's Low-cost laptop program
Other State	200.0	200	100.00%	0	
Ottawa ESD 141					Children's Low-cost laptop program
Other State	180.5	180.5	100.00%	0	
Elmwood CUSD					School Technology Revolving Loan Agreement
Other State	91.3	91.3	100.00%	0	
Lexington CUSD 7					School Technology Revolving Loan Agreement
Other State	75.0	75	100.00%	0	
Community Unit District No. 16					School Technology Revolving Loan Agreement
Other State	110.1	110.1	100.00%	0	
Wolf Branch SD 110					School Technology Revolving Loan Agreement
Other State	105.0	105	100.00%	0	

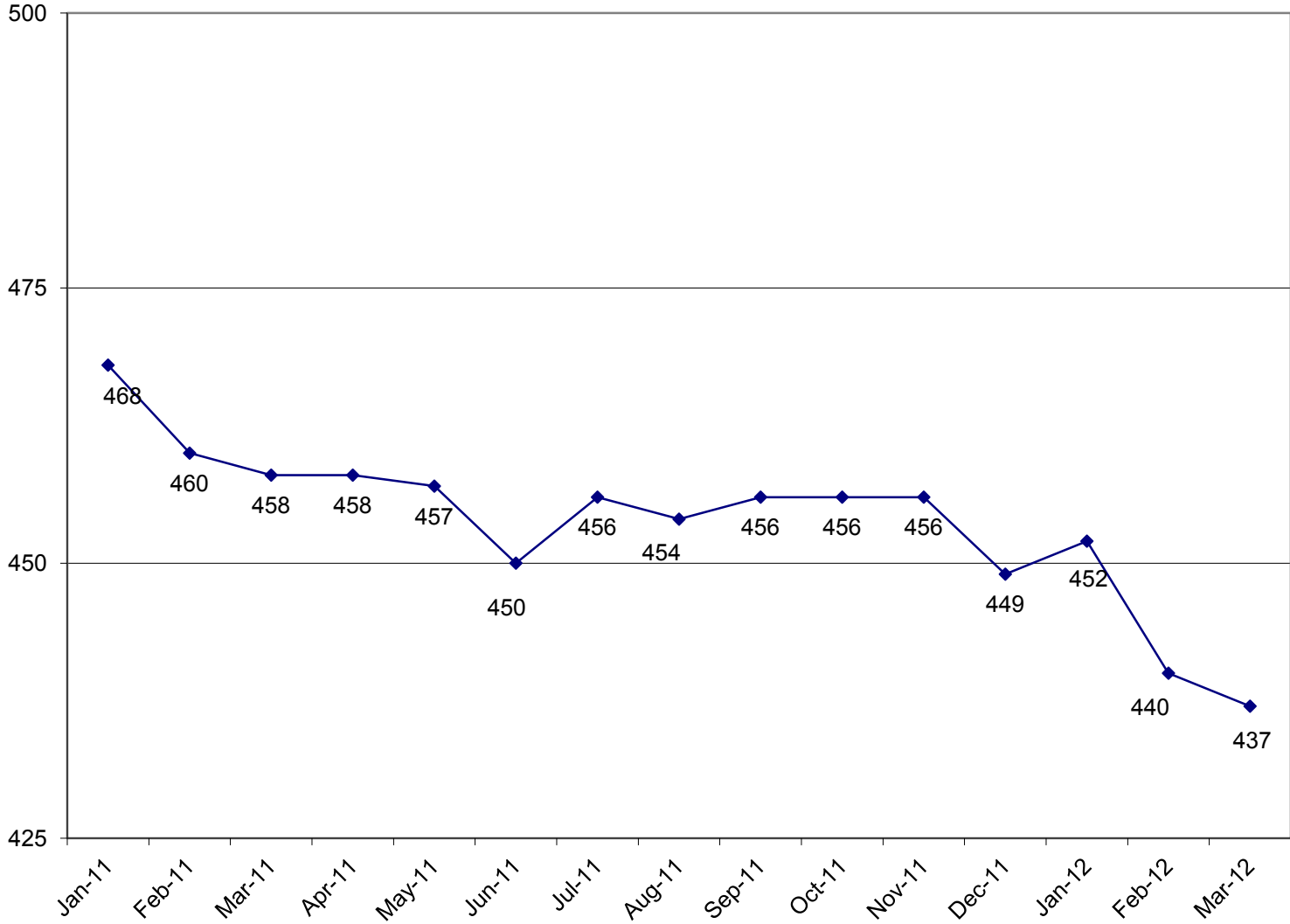
	<u>Funded Amount</u>	<u>Expended Year to Date</u>	<u>% Spent Year to Date</u>	<u>March Expenditures</u>	<u>Description</u>
Prairie-Hills Elem SD					Children's Low-cost laptop program
Other State	66.0	66	100.00%	0	
Community Unit School District 300					School Technology Revolving Loan Agreement
Other State	221.7	221.7	100.00%	0	
<u>Innovation and Improvement</u>					
Northern Illinois University					Comprehensive external evaluation of the 21st Century Program
Federal	121.6	45.1	37.10%	0	
Northern Illinois University					A "live data" website for an Illinois Interactive Report Card
GRF	520.8	489.8	94.00%	0	
Federal	458.7	0	0.00%	0	
Learning Point Associates					Statewide technical assistance and monitoring for the 21st Century Program
Federal	496.6	289.7	58.30%	41.4	
Academic Development, Inc.					Technical assistance to schools/districts in developing evaluations for the content and effectiveness of the parental involvement policy activities and programs for improving the
Federal	100.7	50.4	50.00%	0	
Sangamon County ROE					Provide services in the review, amendment and approval process of NCLB applications and ARRA Title I applications
Federal	250.0	116.7	46.70%	33.4	
University of Memphis					Evaluation of the effectiveness of providers for Supplemental Education Services
Federal	141.4	64.5	45.60%	0	
Illinois State University					Technical assistance and technical support services for the Gates Foundation to align IL Learning Standards and Assessments with college work readiness standards
GRF	140.0	0	0.00%	0	
IL Dept of Human Services					Will oversee the work for Illinois Student Assistance Comm. and provide training to the ROEs
Federal	50.0	50	100.00%	50	
Madison County ROE 41					Coordinate the Building State Capacity Grant
Federal	424.6	424.4	100.00%	172.5	
Illinois Mathematics & Science Academy					The Illinois Math and Science Academy will work with up to 40 DCEO-selected Illinois high schools/after school programs.
Federal	150.0	150	100.00%	75	
Macon Piatt County ROE					Will support the consistent design and delivery of state professional development modules
Federal	137.6	121.8	88.50%	0	
<u>Student Assessment</u>					
NCS Pearson (Harcourt)					Development of the Illinois Standards Achievement Test- MY05647
GRF	3,000.0	923.3	30.80%	0	
Federal	3,011.5	3,011.50	100.00%	0	
University of Illinois					Evaluation of the large scale assessment and accountability system
GRF	250.0	125	50.00%	0	
NCS Pearson, Inc.					IAA Test Development (MY066410)
Federal	2,481.1	1,860.90	75.00%	206.8	
Wisconsin University - WIDA Consortium					Title III Requirements for the ACCESS test (English Language Learning). Validated through comparative studies
GRF	4,661.1	3,165.30	67.90%	0	
Federal	575.6	0	0.00%	0	

	<u>Funded Amount</u>	<u>Expended Year to Date</u>	<u>% Spent Year to Date</u>	<u>March Expenditures</u>	<u>Description</u>
NCS Pearson, Inc.					Administration of the IL Standards Achievement Test MY07645
GRF	7,093.2	2,941.60	41.50%	0	
Federal	6,457.8	6,457.80	100.00%	0	
American College Testing					Administration of the Prairie State Achievement Exam (PSAE)
GRF	8,475.0	0	0.00%	0	
Federal	4,942.0	4,744.00	96.00%	677.7	
Harte-Hanks					Will provide evaluation and review of vendor services to ensure the quality and accuracy of all Illinois' assessments
Federal	184.0	92	50.00%	46.7	
<u>Educator and School Development</u>					
8 Hearing Officers					Certification Revocation Hearing Officers
Other State	226.4	5.4	2.40%	2	
Illinois State University					Coordinate work to support of the National Board of Professional Teaching Standards to serve schools
Federal	406.9	83.1	20.40%	0	
University of Illinois					Facilitate with ISBE and New Illinois Teacher Collaborative a pilot for the Induction and Mentoring Program
Other State	288.0	0	0.00%	0	
Illinois Principals Association					Provide access to the Illinois Principals Association's Education Leaders Network (ELN) on demand webinar service for qualifying first year principals
Federal	174.7	58.2	33.30%	0	
Consortium for Educational Change					Will develop training, support and informational materials necessary according to The Performance Evaluation Reform Act (PERA)
Federal	2,275.0	750	33.00%	750	
<u>Standards and Assessments</u>					
Ashbaugh & Associates, Inc.					Provide programmer for the Illinois Longitudinal Data System
Federal	205.5	135.4	65.90%	15.5	
IL Board of Higher Education					Integrate infrastructure and data systems of IBHE and ISBE for IL Longitudinal Data System
Federal	152.0	71	46.70%	8.6	
Public Consulting Group					IL Longitudinal Data System Data Architecture
Federal	1,322.2	270	20.40%	0	
IL Board of Higher Education					IL Longitudinal Data System Status Reports
Federal	333.9	0	0.00%	0	
Hupp Information Technologies					Redesign of the TCIS TSR Systems
Federal	1,698.9	807.2	47.50%	101.4	
MSF&W					Co-project manager for the Illinois Longitudinal Data System (ILDS)
Federal	177.3	111.4	62.80%	6.7	
Public Consulting Group					Provide services in the integration of all ISBE student-level data collection systems and connecting student-level data
Federal	200.0	0	0.00%	0	
Illinois Community College Board					Funding for ICCB to perform certain services related to the State Longitudinal Data System ARRA Grant
Federal	392.5	30.2	7.70%	3.1	
Illinois Student Assistance Commission					ISAC will perform certain services related to SLDS ARRA Grant
Federal	806.2	297.7	36.90%	0	

	<u>Funded Amount</u>	<u>Expended Year to Date</u>	<u>% Spent Year to Date</u>	<u>March Expenditures</u>	<u>Description</u>
<u>Fiscal and Procurement</u>					
Workforce Services (Jill Bishop)					
Federal	67.2	8.6	12.80%	4.1	Translation of documents from English to other languages
<u>Funding & Disbursements</u>					
MTW Solutions, LLC					
GRF	5.0	0	0.00%	0	Technical Support for e-Grants System
Federal	55.0	16.2	29.50%	0	
<u>Nutrition Programs</u>					
Southern Illinois University					
Federal	250.0	77.5	31.00%	0	Evaluation and reviews for School Meals Initiative (SMI)
Legal Resolve, Inc.					
Federal	150.0	0	0.00%	0	Administrative Hearing Officer for Child Care Food Program
Department of Public Health					
Federal	135.0	67	49.60%	0	Conduct the summer food sanitation inspections
<u>External Assurance</u>					
BKD LLP					
GRF	408.0	197.5	48.40%	0	ARRA/General State Aid Audit
Crowe Horwath LLP					
GRF	328.0	40.1	12.20%	0	ARRA/General State Aid Audit
Grants Breakdown:					
General State Aid	4,448,104.5	3,411,333.80	76.70%	424,211.70	Formula
Title I - Low Income	750,000.0	230,758.60	30.80%	19,757.00	Formula
Child Nutrition	725,000.0	415,241.00	57.30%	70,154.80	Formula - Reimbursement
IDEA	650,000.0	257,242.10	39.60%	29,038.20	Formula
Spec Ed Personnel	452,257.2	360,901.80	79.80%	91,355.30	Formula
Transportation Spec Ed	432,525.6	239,251.30	55.30%	91,134.50	Formula
Title I - Low Income - ARRA	381,125.2	33,331.70	8.70%	2,221.70	Formula - Federal Stimulus
IDEA - Flow Through ARRA	354,535.9	31,752.00	9.00%	0	Formula - Federal Stimulus
Spec Ed Extraordinary	343,375.7	282,598.20	82.30%	84,252.30	Mandated Categorical-Supplemental
Early Childhood Block	320,573.7	229,882.40	71.70%	28,887.00	Block grant for Pre-K, parent training and prevention initiative
Transportation Reg/Voc	205,808.9	156,350.00	76.00%	49,419.10	Formula
Spec Ed Private Facility Tuition	177,743.7	154,814.80	87.10%	22,928.90	Formula
Title II - Teacher Quality	157,000.0	31,737.60	20.20%	2,536.40	Formula
Spec Ed Orphanage	101,700.0	66,760.40	65.60%	8,857.30	Formula
Bilingual Education	62,497.8	18,047.90	28.90%	1,985.40	Mandated Categorical
Title IV - 21st Century	60,500.0	14,486.90	23.90%	3,376.70	Competitive
Voc Ed - Federal	55,000.0	17,656.10	32.10%	2,171.80	Formula and Competitive - to improve student academic and career skills
Striving Readers	49,653.9	30.2	0.10%	0	Grants
Title III - English Language Acq	40,000.0	4,665.70	11.70%	442.4	Grant
Vocational Education - State	38,562.1	31,854.20	82.60%	2,498.40	Formula
State Free Lunch and Breakfast	26,300.0	21,182.10	80.50%	1,394.90	Mandated Categorical - Reimbursement
IDEA Preschool	25,000.0	7,544.40	30.20%	639	Formula - special education, 3-5 year-olds
Driver Education	24,229.6	18,172.20	75.00%	6,057.40	Reimbursement

	<u>Funded</u> <u>Amount</u>	<u>Expended</u> <u>Year to</u> <u>Date</u>	<u>% Spent</u> <u>Year to</u> <u>Date</u>	<u>March</u> <u>Expenditures</u>	<u>Description</u>
Technology Literacy	20,000.0	152.4	0.80%	28.8	Competitive and non-competitive grants to school districts
Technology Literacy - ARRA	17,739.1	1,327.20	7.50%	0	Competitive - federal Stimulus
Title IV - Safe and Drug Free	15,000.0	22.5	0.20%	0	Formula
Truant/Dropout/Optional Education	14,059.0	11,249.50	80.00%	986.9	Competitive - at-risk students/dropout prevention
Orphanage Tuition	13,000.0	6,838.80	52.60%	2,338.70	Reimbursement to school districts for children residing in orphanages
Preschool - Spec Ed - ARRA	12,818.0	838.8	6.50%	0	Formula - Federal Stimulus
Title II Math/Science Partnerships	12,000.0	1,240.80	10.30%	116	Formula
ROE Salaries	10,806.4	6,854.90	63.40%	810.2	Salaries for ROE's
Spec Ed Summer School	10,750.0	10,750.00	100.00%	0	Formula - Special ed students enrolled in summer sessions
Alternative Ed/Reg Safe Schools	9,341.9	7,132.70	76.40%	1,881.80	Formula
Charter Schools - Federal	9,000.0	488.4	5.40%	0	Competitive
McKinney Homeless Ed	5,000.0	1,469.90	29.40%	41.6	Competitive grants to school districts
Voc Ed - Federal Tech Prep	5,000.0	10	0.20%	1.8	Grants - assists students in achieving learning/occupational skills standards
School Tech. Rev. Loan	5,000.0	603	12.10%	0	Loans to schools to implement technology
Longitudinal Data System - DOE	4,983.5	0	0.00%	0	Grants
IDEA Improvement Part D	3,700.0	811.2	21.90%	139.7	Reimbursement
Philip Rock Center	3,577.8	2,900.00	81.10%	400	Targeted Initiative
Advanced Placement Fee	3,000.0	1,872.60	62.40%	1,679.00	Fee reimbursement for Adv Placement Exam and Int'l Baccalaureate exam
After School Matters	2,500.0	1,020.00	40.80%	420	Grant to After School Matters
Learn & Serve America	2,500.0	94.1	3.80%	4.7	Competitive grants
ROE - School Services	2,135.8	1,424.30	66.70%	320.8	Formula - ROE Operations
Title VI-Flex. & Acct Rural Education	2,000.0	479.6	24.00%	116.1	Grants to school districts
ONPAR	2,000.0	0	0.00%	0	Grant
Congressional Earmarks	1,870.5	0	0.00%	0	Grants
Technology for Success -State	1,800.0	1,403.40	78.00%	169.1	Grants
Agriculture Education	1,800.0	1,429.40	79.40%	145.3	Grants to school districts
Reorg Incentive Feasibility Study	1,800.0	1,593.00	88.50%	0	Grants
Children's Mental Health Partner	1,458.0	1,187.30	81.40%	295.7	Grants
Mat'ls for the Visually Impaired	1,421.1	1,075.00	75.60%	100	Targeted Init. - with The Chicago Lighthouse for People who are Blind or Visually Impaired
Temporary Relocation	1,400.0	0	0.00%	0	Formula grants for school emergency relocation
Teach America	1,225.0	586.9	47.90%	98	Grant to Teach for America-Chicago
Nat'l Board Certification	1,000.0	0	0.00%	0	Grants
Arts & Foreign Language	1,000.0	662.8	66.30%	362.3	Grants
Emergency Financial Assistance	1,000.0	0	0.00%	0	Formula and loans to school districts
Lowest Performing Schools	948.8	0	0.00%	0	Grants to lowest performing schools
Child Nutrition - ARRA	914.3	0	0.00%	0	Formula - Federal Stimulus
Recording - Blind and Dyslexic	816.6	816.6	100.00%	0	Grant to increase achievement of students with visual impairments
Homeless Education - ARRA	645.4	26.1	4.00%	0	Formula - Federal Stimulus
Deaf/Blind	450.0	205.6	45.70%	42.8	Grant to Philip J. Rock Center
IDEA Model Outreach	400.0	0	0.00%	0	Competitive
Tax Equivalent Grants	222.6	222.6	100.00%	0	Grants
Autism Training & Tech Assist.	100.0	77.8	77.80%	11.1	Grants to the IL Autism Training & Tech Assistance Program
ROE Bus Driver Training	70.0	70	100.00%	0	ROE Bus Driver Training
Charter Schools-Rev Loan Fund	20.0	0	0.00%	0	Other/Repayment of loans
Standards Assessment & Acct	1.0	0	0.00%	0	Grants for K-6 Arts, Learn Improve, Learning Standards, Student/Teacher Assessment
Teachers/Admin. Mentoring	1.0	0	0.00%	0	Grants
Advanced Placement Classes/State	1.0	0	0.00%	0	Grants

**ILLINOIS STATE BOARD OF EDUCATION
HEADCOUNT AS OF MARCH
2012**



**ILLINOIS STATE BOARD OF EDUCATION
AGENCY STAFF DETAIL AS OF MARCH 2012**

	Mgmt.	Prof.	Support	GRF	Non-GRF	Total
SUPERINTENDENT'S OFFICE						
State Superintendent	3	1	2	6	0	6
Board Services	0	1	1	2	0	2
General Counsel	3	10	1	12	2	14
Governmental Relations	0	2	0	2	0	2
Internal Audit	1	4	1	6	0	6
External Assurance	<u>2</u>	<u>18</u>	<u>2</u>	<u>12</u>	<u>10</u>	<u>22</u>
Sub-Total	9	36	7	40	12	52
HUMAN RESOURCES						
Human Resources	<u>3</u>	<u>5</u>	<u>7</u>	<u>15</u>	<u>0</u>	<u>15</u>
Sub-Total	3	5	7	15	0	15
PUBLIC INFORMATION						
Public Information	<u>1</u>	<u>5</u>	<u>1</u>	<u>7</u>	<u>0</u>	<u>7</u>
Sub-Total	1	5	1	7	0	7
SPECIAL EDUCATION SERVICES						
Special Education Admin.	1	0	1	0	2	2
Special Education Services - Spfld.	2	35	7	5	39	44
Special Education Services - Chgo.	<u>1</u>	<u>17</u>	<u>2</u>	<u>0</u>	<u>20</u>	<u>20</u>
Sub-Total	4	52	10	5	61	66
LANGUAGE & EARLY CHILDHOOD DEVELOPMENT						
Center Administration	1	0	0	1	0	1
Early Childhood	1	8	2	6	5	11
English Language Learning	<u>1</u>	<u>7</u>	<u>1</u>	<u>2</u>	<u>7</u>	<u>9</u>
Sub-Total	3	15	3	9	12	21
EDUCATIONAL PROGRAMS						
Career & Technical Education	1	9	3	7	6	13
Innovation and Improvement	<u>3</u>	<u>19</u>	<u>4</u>	<u>2</u>	<u>24</u>	<u>26</u>
Sub-Total	4	28	7	9	30	39

	Mgmt.	Prof.	Support	GRF	Non-GRF	Total
STANDARDS & ASSESSMENTS						
Standards & Assessment Admin.	1	5	1	6	1	7
Data Analysis & Progress Reporting	2	9	2	9	4	13
Assessment	<u>1</u>	<u>2</u>	<u>1</u>	<u>2</u>	<u>2</u>	<u>4</u>
	4	16	4	17	7	24
SCHOOL SUPPORT SERVICES FOR ALL SCHOOLS						
School Support Admin	1	0	1	2	0	2
Educator Certification	1	10	13	23	1	24
Educator & School Development	1	2	4	6	1	7
Nutrition Programs	<u>2</u>	<u>37</u>	<u>3</u>	<u>4</u>	<u>38</u>	<u>42</u>
	5	49	21	35	40	75
FISCAL SUPPORT SERVICES						
Fiscal Support Services Admin.	1	0	0	1	0	1
Budget & Financial Management	1	5	1	7	0	7
Administrative Services	1	3	13	17	0	17
Data Systems	3	26	2	31	0	31
Technology Support	1	17	2	20	0	20
Fiscal & Procurement	2	8	3	13	0	13
Funding and Disbursements	2	21	8	13	18	31
School Business Services	<u>2</u>	<u>13</u>	<u>3</u>	<u>17</u>	<u>1</u>	<u>18</u>
Sub-Total	13	93	32	119	19	138
GRAND TOTAL, ALL CENTERS	46	299	92	256	181	437
	11%	68%	21%	59%	41%	100%

ILLINOIS STATE BOARD OF EDUCATION
Personnel Transactions as of March 2012

Transaction Data:

	<u>FY03</u>	<u>FY04</u>	<u>FY05</u>	<u>FY06</u>	<u>FY07</u>	<u>FY08</u>	<u>FY09</u>	<u>FY10</u>	<u>FY11</u>	<u>FY12</u>
Begin Year	650	522	471	487	478	463	475	473	480	450
Hire Externally	29	20	77	37	44	54	30	51	23	33
Recall	11	19	4	4	0	1	1	0	1	0
Retire	-128	-34	-30	-25	-20	-19	-15	-25	-25	-28
Resign	-13	-24	-31	-17	-33	-19	-12	-12	-25	-13
Discharge	-2	-2	-4	-7	-5	-4	-5	-7	-3	-4
Layoff	-22	-30	0	0	0	0	0	0	-1	0
Death	-3	0	0	-1	-1	0	0	0	0	-1
Other	<u>0</u>	<u>0</u>	<u>0</u>	<u>0</u>	<u>0</u>	<u>-1</u>	<u>-1</u>	<u>0</u>	<u>0</u>	<u>0</u>
End Year	522	471	487	478	463	475	473	480	450	437