

ILLINOIS STATE BOARD OF EDUCATION MEETING
February 21, 2012

TO: Illinois State Board of Education

FROM: Christopher A. Koch, Ed.D., State Superintendent of Education 
Linda Riley Mitchell, Chief Financial Officer 
Donald W. Evans, Director of Human Resources 

Agenda Topic: Information Item: SBE Fiscal & Administrative Monthly Reports

Materials: Appropriations and Spending by Program –FY12
Financial Status Report (contract & grant detail) – FY12
Contract & Grant Awards Under \$1 million – FY12
Comparative Statement of Expenditures – FY12
Monthly Headcount Graph, Staff Detail, Personnel Transactions

Purpose of Agenda Item

To provide the Board standard reports with key information on fiscal and administrative activities of the state Agency.

Relationship to/Implications for the State Board's Strategic Plan

Not applicable – informational item only.

Expected Outcome(s) of Agenda Item

Not applicable – informational item only.

Background Information

In June 2002, the State Board adopted bylaws outlining a new committee structure under which fiscal, audit and operations issues will be handled by the Finance and Audit Committee. The Superintendent requested that the Agency organize and standardize the financial and headcount data provided to the Board for their future policy work and decision making.

Currently, the following reports are provided:

1. Budget/Annual Report (annually in January)
2. Condition of Public Education (December)
3. Comptroller SEA Report (annually in February)
4. Appropriation and Expenditure (monthly)
5. Financial Status Report – Contract/Grant Detail (monthly)
6. Contract & Grant Awards Under \$1 Million (monthly)
7. Comparative Statement of Expenditures (monthly)
8. Headcount Reports (monthly)
Personnel Transactions, Staff Detail by Division, & Monthly Headcount Graph

Analysis and Implications for Policy, Budget, Legislative Action and Communications

The monthly or Quarterly Fiscal and Headcount Reports were first provided to the Board in August 2002. These reports provide information regarding staffing and funding as well as details of contracts over \$50,000 and grants the Agency is processing.

At the request of the Board at the December 2011 meeting, a Contract & Grant Award Report under \$1 million has been added to the SBE Fiscal & Administrative Monthly Reports package.

All contracts and grants totaling over \$1 million are reviewed at the Board level. Included in this month's review are:

- Contract Renewal with NCS Pearson – Illinois Alternative Assessment (IAA)
- Contract Renewal with NCS Pearson – Illinois Standards Achievement Test (ISAT) Development
- Contract Renewal with NCS Pearson – Illinois Standards Achievement Test (ISAT) Administration
- Contract Renewal with ACT – Prairie State Achievement Exam (PSAE)

Superintendent's Recommendation

None needed.

Next Steps

Continue to provide these reports pursuant to the schedule above.

Illinois State Board of Education
2012 Appropriation & Spending by Program 07/01/2011 thru 01/31/2012

(Dollars in Thousands)

Initiatives	Appropriation			YTD Expenditures		
	Total	Grants	Admin	Total	Grants	Admin
STATE						
Distributive Grants	<u>\$6,231,532.8</u>	<u>\$6,231,532.8</u>	<u>\$0.0</u>	<u>\$3,473,458.8</u>	<u>\$3,473,458.8</u>	<u>\$0.0</u>
General State Aid	\$4,448,104.5	\$4,448,104.5	\$0.0	\$2,564,764.8	\$2,564,764.8	\$0.0
District Consolidation Cost	\$1,800.0	\$1,800.0	\$0.0	\$1,593.0	\$1,593.0	\$0.0
Mandated Categoricals	<u>\$1,781,628.3</u>	<u>\$1,781,628.3</u>	<u>\$0.0</u>	<u>\$907,100.9</u>	<u>\$907,100.9</u>	<u>\$0.0</u>
Illinois Free Lunch/Breakfast	\$26,300.0	\$26,300.0	\$0.0	\$18,575.5	\$18,575.5	\$0.0
Orphanage Tuition 18-3 (Reg Ed)	\$13,000.0	\$13,000.0	\$0.0	\$4,500.1	\$4,500.1	\$0.0
Sp-Ed - Extraordinary Services	\$343,375.7	\$343,375.7	\$0.0	\$158,892.2	\$158,892.2	\$0.0
Sp-Ed - Orphanage Tuition 14-7.03	\$101,700.0	\$101,700.0	\$0.0	\$57,903.1	\$57,903.1	\$0.0
Sp-Ed - Personnel Reimbursement	\$465,700.0	\$465,700.0	\$0.0	\$269,546.4	\$269,546.4	\$0.0
Sp-Ed - Private Tuition	\$177,743.7	\$177,743.7	\$0.0	\$131,885.8	\$131,885.8	\$0.0
Sp-Ed - Summer School	\$11,200.0	\$11,200.0	\$0.0	\$10,750.0	\$10,750.0	\$0.0
Sp-Ed - Transportation	\$436,800.0	\$436,800.0	\$0.0	\$148,116.8	\$148,116.8	\$0.0
Transportation - Regular/Vocational	\$205,808.9	\$205,808.9	\$0.0	\$106,930.9	\$106,930.9	\$0.0
Standards - Assessment & Accountability	<u>\$26,000.0</u>	<u>\$0.0</u>	<u>\$26,000.0</u>	<u>\$6,162.4</u>	<u>\$0.0</u>	<u>\$6,162.4</u>
Assessments	\$24,000.0	\$0.0	\$24,000.0	\$6,162.4	\$0.0	\$6,162.4
Standards, Materials, Training for Teachers	\$2,000.0	\$0.0	\$2,000.0	\$0.0	\$0.0	\$0.0
Growth Model	\$0.0	\$0.0	\$0.0	\$0.0	\$0.0	\$0.0
System of Support	\$0.0	\$0.0	\$0.0	\$0.0	\$0.0	\$0.0
Ensuring Quality Ed Personnel	<u>\$2,225.0</u>	<u>\$2,225.0</u>	<u>\$0.0</u>	<u>\$389.5</u>	<u>\$389.5</u>	<u>\$0.0</u>
National Board Certification	\$1,000.0	\$1,000.0	\$0.0	\$0.0	\$0.0	\$0.0
Principal Mentoring Program	\$0.0	\$0.0	\$0.0	\$0.0	\$0.0	\$0.0
Teach for America	\$1,225.0	\$1,225.0	\$0.0	\$389.5	\$389.5	\$0.0
Teacher and Admin. Mentoring Program	\$0.0	\$0.0	\$0.0	\$0.0	\$0.0	\$0.0
Early Childhood	<u>\$325,123.5</u>	<u>\$320,573.7</u>	<u>\$4,549.8</u>	<u>\$174,888.3</u>	<u>\$172,883.0</u>	<u>\$2,005.3</u>
Academic Difficulty	<u>\$86,782.1</u>	<u>\$85,898.7</u>	<u>\$883.4</u>	<u>\$26,323.8</u>	<u>\$26,323.8</u>	<u>\$0.0</u>
Alternative Learning/Regional Safe Schools	\$9,341.9	\$9,341.9	\$0.0	\$4,457.9	\$4,457.9	\$0.0
Bilingual Education	\$63,381.2	\$62,497.8	\$883.4	\$12,723.0	\$12,723.0	\$0.0
Truant Alternative Optional Education	\$14,059.0	\$14,059.0	\$0.0	\$9,142.9	\$9,142.9	\$0.0

Initiatives	Appropriation			YTD Expenditures		
	Total	Grants	Admin	Total	Grants	Admin
Learning Technologies	<u>\$3,000.0</u>	<u>\$1,800.0</u>	<u>\$1,200.0</u>	<u>\$1,669.8</u>	<u>\$1,069.8</u>	<u>\$600.0</u>
Technology for Success	\$3,000.0	\$1,800.0	\$1,200.0	\$1,669.8	\$1,069.8	\$600.0
Career Preparation	<u>\$40,362.1</u>	<u>\$40,362.1</u>	<u>\$0.0</u>	<u>\$27,963.7</u>	<u>\$27,963.7</u>	<u>\$0.0</u>
Agricultural Education	\$1,800.0	\$1,800.0	\$0.0	\$1,159.1	\$1,159.1	\$0.0
Career and Technical Education	\$38,562.1	\$38,562.1	\$0.0	\$26,804.6	\$26,804.6	\$0.0
Regional Services	<u>\$13,101.5</u>	<u>\$13,012.2</u>	<u>\$89.3</u>	<u>\$6,056.4</u>	<u>\$6,056.4</u>	<u>\$0.0</u>
ROE - Bus Driver Training	\$70.0	\$70.0	\$0.0	\$70.0	\$70.0	\$0.0
ROE - Salaries	\$10,806.4	\$10,806.4	\$0.0	\$5,228.4	\$5,228.4	\$0.0
ROE - School Services	\$2,225.1	\$2,135.8	\$89.3	\$758.0	\$758.0	\$0.0
Strategic Plan	<u>\$100.0</u>	<u>\$0.0</u>	<u>\$100.0</u>	<u>\$61.9</u>	<u>\$0.0</u>	<u>\$61.9</u>
Strategic Plan	\$100.0	\$0.0	\$100.0	\$61.9	\$0.0	\$61.9
Administration	<u>\$22,154.0</u>	<u>\$0.0</u>	<u>\$22,154.0</u>	<u>\$12,073.7</u>	<u>\$0.0</u>	<u>\$12,073.7</u>
Targeted Initiatives	<u>\$13,037.2</u>	<u>\$12,094.9</u>	<u>\$942.3</u>	<u>\$5,543.6</u>	<u>\$5,169.9</u>	<u>\$373.7</u>
Advanced Placement Classes	\$0.0	\$0.0	\$0.0	\$0.0	\$0.0	\$0.0
After School Matters	\$2,500.0	\$2,500.0	\$0.0	\$0.0	\$0.0	\$0.0
Arts and Foreign Language	\$1,000.0	\$1,000.0	\$0.0	\$204.0	\$204.0	\$0.0
Autism Project	\$100.0	\$100.0	\$0.0	\$55.6	\$55.6	\$0.0
Blind & Dyslexic	\$816.6	\$816.6	\$0.0	\$816.6	\$816.6	\$0.0
Childrens Mental Health Partnership	\$1,620.0	\$1,458.0	\$162.0	\$821.9	\$796.2	\$25.8
Community Residential Services Authority	\$592.3	\$0.0	\$592.3	\$276.1	\$0.0	\$276.1
Educator Misconduct Investigations	\$184.0	\$0.0	\$184.0	\$71.8	\$0.0	\$71.8
Lowest Performing Schools	\$1,002.8	\$998.8	\$4.0	\$0.0	\$0.0	\$0.0
Materials Center for the Visually Impaired	\$1,421.1	\$1,421.1	\$0.0	\$875.0	\$875.0	\$0.0
Philip J. Rock Center & School	\$3,577.8	\$3,577.8	\$0.0	\$2,200.0	\$2,200.0	\$0.0
Response to Intervention	\$0.0	\$0.0	\$0.0	\$0.0	\$0.0	\$0.0
Tax Equivalent Grants	\$222.6	\$222.6	\$0.0	\$222.6	\$222.6	\$0.0
NON STATE						
School Infrastructure Fund	<u>\$726.8</u>	<u>\$0.0</u>	<u>\$726.8</u>	<u>\$406.6</u>	<u>\$0.0</u>	<u>\$406.6</u>
School Infrastructure (Debt Admin)	\$726.8	\$0.0	\$726.8	\$406.6	\$0.0	\$406.6
Driver Education	<u>\$24,325.2</u>	<u>\$24,229.6</u>	<u>\$95.6</u>	<u>\$12,118.1</u>	<u>\$12,114.8</u>	<u>\$3.3</u>
Other Funds	<u>\$155,288.9</u>	<u>\$133,880.0</u>	<u>\$21,408.9</u>	<u>\$3,894.2</u>	<u>\$1,421.6</u>	<u>\$2,472.6</u>
Capital Development Fund-Sch Const.	\$25,000.0	\$25,000.0	\$0.0	\$0.0	\$0.0	\$0.0

Initiatives	Appropriation			YTD Expenditures		
	Total	Grants	Admin	Total	Grants	Admin
Charter Schools Revolving Loan Fund	\$20.0	\$20.0	\$0.0	\$0.0	\$0.0	\$0.0
Emergency Financial Assistance Fund	\$1,000.0	\$1,000.0	\$0.0	\$0.0	\$0.0	\$0.0
Indirect Costs	\$7,015.2	\$0.0	\$7,015.2	\$2,011.3	\$0.0	\$2,011.3
ISBE - Special Purpose Trust Fund	\$8,255.5	\$0.0	\$8,255.5	\$114.5	\$0.0	\$114.5
ISBE Teacher Certificate Institute Fund	\$2,208.9	\$0.0	\$2,208.9	\$2.6	\$0.0	\$2.6
School Construction Maintenance Fund	\$100,000.0	\$100,000.0	\$0.0	\$0.0	\$0.0	\$0.0
School Technology Revolving Loan	\$5,000.0	\$5,000.0	\$0.0	\$381.3	\$381.3	\$0.0
Teacher Certification Fee Revolving Fund	\$3,700.0	\$0.0	\$3,700.0	\$344.1	\$0.0	\$344.1
Technology Immersion - Build IL Bond Fund	\$1,689.3	\$1,460.0	\$229.3	\$1,040.3	\$1,040.3	\$0.0
Temporary Relocation Revolving Fund	\$1,400.0	\$1,400.0	\$0.0	\$0.0	\$0.0	\$0.0

FEDERAL

Federal Funds	<u>\$3,673,834.4</u>	<u>\$3,529,837.2</u>	<u>\$143,997.1</u>	<u>\$895,733.6</u>	<u>\$863,949.5</u>	<u>\$31,784.1</u>
Advanced Placement Fee Payment	\$3,099.1	\$3,000.0	\$99.1	\$193.6	\$193.6	\$0.0
ARRA - Child Nutrition Sch Lunch Equipment	\$914.3	\$914.3	\$0.0	\$0.0	\$0.0	\$0.0
ARRA - Education Jobs Fund	\$163,000.0	\$163,000.0	\$0.0	\$79,435.2	\$79,435.2	\$0.0
ARRA - IDEA - Part B	\$354,535.9	\$354,535.9	\$0.0	\$32,491.7	\$32,491.7	\$0.0
ARRA - IDEA - Pre-School	\$12,818.0	\$12,818.0	\$0.0	\$847.4	\$847.4	\$0.0
ARRA - Longitudinal Data Systems	\$7,300.0	\$0.0	\$7,300.0	\$1,063.7	\$0.0	\$1,063.7
ARRA - McKinney Homeless	\$645.4	\$645.4	\$0.0	\$26.1	\$26.1	\$0.0
ARRA - Race to the Top	\$50,000.0	\$0.0	\$50,000.0	\$0.0	\$0.0	\$0.0
ARRA - Title I	\$139,102.2	\$139,102.2	\$0.0	\$20,845.1	\$20,845.1	\$0.0
ARRA - Titel I School Improvement (1003G)	\$242,023.0	\$242,023.0	\$0.0	\$9,373.6	\$9,373.6	\$0.0
ARRA - Title II Technology	\$18,566.2	\$17,739.1	\$827.1	\$1,630.0	\$1,317.5	\$312.5
Career & Technical Education	\$56,379.9	\$55,000.0	\$1,379.9	\$11,523.1	\$11,116.6	\$406.5
Career & Technical Education - Technical Prep	\$5,177.0	\$5,000.0	\$177.0	\$2.1	\$0.0	\$2.1
Charter Schools	\$9,131.5	\$9,000.0	\$131.5	\$488.4	\$488.4	\$0.0
Child Nutrition	\$735,870.1	\$725,000.0	\$10,870.1	\$288,920.1	\$284,763.1	\$4,157.0
IDEA - Deaf Blind, Part C	\$450.0	\$450.0	\$0.0	\$131.5	\$131.5	\$0.0
IDEA - Improvement Plan	\$4,199.3	\$3,700.0	\$499.3	\$713.0	\$635.8	\$77.3
IDEA - Model Outreach	\$400.0	\$400.0	\$0.0	\$0.0	\$0.0	\$0.0
IDEA - Pre-School	\$25,992.9	\$25,000.0	\$992.9	\$5,979.0	\$5,772.2	\$206.8
Illinois Purchase Care Review Board	\$370.7	\$0.0	\$370.7	\$198.8	\$0.0	\$198.8
Individuals with Disabilities Educ. Act, Pt. B	\$666,112.4	\$650,000.0	\$16,112.4	\$195,561.4	\$190,425.0	\$5,136.4
Individuals with Disabilities Educ. Act, Pt. B	\$40.0	\$0.0	\$40.0	\$4.3	\$0.0	\$4.3
Integration of Schools & Mental Health Systems	\$0.0	\$0.0	\$0.0	\$0.0	\$0.0	\$0.0
Learn and Serve America	\$2,550.0	\$2,500.0	\$50.0	\$87.3	\$87.3	\$0.0
Longitudinal Data System	\$8,900.0	\$4,985.0	\$3,915.0	\$556.1	\$0.0	\$556.1
Math & Science Partnerships	\$12,715.5	\$12,000.0	\$715.5	\$928.7	\$855.1	\$73.5
National Center for Education Statistics	\$221.6	\$0.0	\$221.6	\$85.9	\$0.0	\$85.9
ONPAR	\$2,000.0	\$2,000.0	\$0.0	\$0.0	\$0.0	\$0.0

Initiatives	Appropriation			YTD Expenditures		
	Total	Grants	Admin	Total	Grants	Admin
Refugee	\$0.0	\$0.0	\$0.0	\$0.0	\$0.0	\$0.0
Spanish Language Assesment-SALSA	\$1,818.8	\$0.0	\$1,818.8	\$0.0	\$0.0	\$0.0
School Health Programs	\$1,095.7	\$0.0	\$1,095.7	\$123.4	\$0.0	\$123.4
Special Congressional Initiatives	\$2,000.0	\$1,870.5	\$129.5	\$23.6	\$0.0	\$23.6
Striving Readers	\$50,000.0	\$49,653.9	\$346.1	\$82.5	\$24.7	\$57.8
Title I - Basic Programs	\$685,213.7	\$673,465.1	\$11,748.6	\$191,821.5	\$188,918.2	\$2,903.4
Title I - Comprehensive School Reform	\$35.5	\$0.0	\$35.5	\$0.0	\$0.0	\$0.0
Title I - Education of Migratory Children	\$4,044.9	\$3,976.7	\$68.2	\$586.0	\$581.0	\$5.0
Title I - Even Start Family Literacy Programs	\$3,151.9	\$2,933.2	\$218.7	\$77.0	\$77.0	\$0.0
Title I - Neglected and Delinquent	\$1,202.9	\$1,172.1	\$30.8	\$225.4	\$207.0	\$18.4
Title I - Reading First	\$0.0	\$0.0	\$0.0	\$0.0	\$0.0	\$0.0
Title I - School Improvement	\$71,041.5	\$68,452.9	\$2,588.6	\$5,591.6	\$5,296.9	\$294.6
Title II - Enhance Ed through Technology	\$20,892.7	\$20,000.0	\$892.7	\$98.5	\$44.8	\$53.8
Title II - Quality Teachers	\$161,383.8	\$157,000.0	\$4,383.8	\$16,471.9	\$16,107.8	\$364.0
Title III - English Language Acquisition	\$42,141.4	\$40,000.0	\$2,141.4	\$3,984.7	\$3,699.6	\$285.1
Title IV - 21st Century Schools	\$62,266.0	\$60,500.0	\$1,766.0	\$9,274.4	\$8,616.6	\$657.9
Title IV - Safe & Drug Free Schools	\$15,538.9	\$15,000.0	\$538.9	\$275.3	\$22.9	\$252.4
Title V - Innovative Programs	\$0.0	\$0.0	\$0.0	\$0.0	\$0.0	\$0.0
Title VI - Rural & Low Income Programs	\$2,051.0	\$2,000.0	\$51.0	\$226.4	\$226.4	\$0.0
Title VI - State Assessment	\$21,961.5	\$0.0	\$21,961.5	\$14,373.3	\$0.0	\$14,373.3
Title X - McKinney Homeless Assistance	\$5,463.7	\$5,000.0	\$463.7	\$1,412.1	\$1,321.4	\$90.7
Transition to Teaching	\$15.6	\$0.0	\$15.6	\$0.0	\$0.0	\$0.0
TOTAL - ALL FUNDS:	\$10,617,593.4	\$10,395,446.1	\$222,147.2	\$4,646,744.4	\$4,590,800.8	\$55,943.6

Illinois State Board of Education
 Contract Awards
 January 13, 2012 through January 31, 2012

Vendor	Illinois Procurement Bulletin Award Notice Date	Type of Award	Term	Contract Term Amount	Description
Hupp Information Tehnologies	1/17/2012	Contract Renewal	3/1/12 - 2/28/13	\$ 107,058	Time/materials contract for services of one Analyst to provide support of EDFacts/EDEN data collections
Lake County Regional Office of Education #34	N/A	Initial Contract Award	1/10/12 - 6/30/12	\$ 17,160	Implement the Effective Formative Assessment for Students and Teachers Program (EFAST)
Sangamon County ROE #51	N/A	Contract Amendment	7/1/11 - 6/30/12	\$ 150,000	Provide assistance with processing NCLB applicaions, and District grants and other grants as needed.
Madison County ROE#41	N/A	Contract Amendment	1/26/12 - 06/30/12	\$ 26,000	Inplement the Learn and Serve America Program
IBM Technical Service Program	N/A	State master contract	2/1/2012-06/30/12	\$ 110,040	Programmer Analyst for staffing assistance with the ILDS Application project.

**ILLINOIS STATE BOARD OF EDUCATION
FUNDING AND DISBURSEMENT SERVICES DIVISION
100 NORTH FIRST STREET, SPRINGFIELD, IL 62777**

Approved Grants Less Than 1 Million

Thru Date:(01/13/2012-01/31/2012)

Program: 2012 - 3220, Career & Technical Ed Improvement (CTEI)

<u>RCDT</u>	<u>District Name</u>	<u>City</u>	<u>Budget Amt</u>	<u>Approval Date</u>
01-001-1720-46(00)	WEST CENTRAL REGION - EFE 24	QUINCY	\$426,307	01/23/2012
07-016-2270-46(00)	CAREER NETWORK SO COOK - EFE	OLYMPIA FIELDS	\$362,145	01/26/2012
08-000-0000-46(00)	EAGLE RIDGE DELIVERY SYS-EFE	STOCKTON	\$292,053	01/19/2012
09-010-0080-46(00)	CHAMPAIGN-FORD EFE SYSTEM	CHAMPAIGN	\$455,942	01/26/2012
53-000-0000-46(00)	TAZEWELL COUNTY DEL SYST-EFE	PEKIN	\$514,693	01/13/2012
			\$2,051,140	

Program: 2012 - 3235, Agriculture Education

<u>RCDT</u>	<u>District Name</u>	<u>City</u>	<u>Budget Amt</u>	<u>Approval Date</u>
30-039-5400-51(01)	SOUTHERN ILL UNIV-CARBONDALE	CARBONDALE	\$11,500	01/19/2012
56-099-5250-51(01)	JOLIET COLLEGE DISTRICT 525	JOLIET	\$14,000	01/19/2012
			\$25,500	

Program: 2012 - 3305, Bilingual Ed. - T.P.I. & T.B.E.

<u>RCDT</u>	<u>District Name</u>	<u>City</u>	<u>Budget Amt</u>	<u>Approval Date</u>
05-016-0230-02(00)	PROSPECT HEIGHTS SD 23	PROSPECT HTS	\$111,082	01/19/2012
06-016-0925-02(00)	WESTCHESTER SD 92-5	WESTCHESTER	\$44,652	01/30/2012
06-016-1050-02(00)	LA GRANGE SD 105	LAGRANGE	\$90,161	01/24/2012
06-016-2120-16(00)	LEYDEN COMMUNITY HIGH SCHOOL 212	FRANKLIN PARK	\$80,127	01/30/2012
07-016-1230-02(00)	OAK LAWN-HOMETOWN S D 123	OAK LAWN	\$92,035	01/24/2012
07-016-1275-02(00)	CHICAGO RIDGE SD 1275	CHICAGO RIDGE	\$104,762	01/26/2012
07-016-1440-02(00)	PRAIRIE-HILLS ELEM SD 144	MARKHAM	\$28,550	01/17/2012
07-016-1560-02(00)	COOK COUNTY SD 156	CALUMET CITY	\$51,054	01/18/2012
09-010-1300-04(00)	THOMASBORO CCSD 130	THOMASBORO	\$13,056	01/17/2012
17-064-0050-26(00)	MCLEAN COUNTY UD 5	NORMAL	\$127,028	01/25/2012
19-022-0040-02(00)	ADDISON SCHOOL DIST 4	ADDISON	\$557,226	01/25/2012
19-022-0930-04(00)	COMMUNITY CONS SCHOOL DIST 93	CAROL STREAM	\$265,696	01/30/2012
19-022-0990-16(00)	COMMUNITY HIGH SCHOOL DIST 99	DOWNERS GRO	\$44,565	01/19/2012
24-032-0540-02(00)	MORRIS SD 54	MORRIS	\$19,440	01/30/2012
28-006-1030-22(00)	DEPUE CUSD 103	DEPUE	\$85,289	01/25/2012
31-045-1290-22(00)	AURORA WEST USD 129	AURORA	\$762,702	01/24/2012
31-045-3000-26(00)	COMMUNITY UNIT SCHOOL DIST 300	CARPENTERSVIL	\$998,043	01/24/2012
31-045-3020-26(00)	KANELAND CUSD 302	MAPLE PARK	\$31,285	01/26/2012
34-049-0760-02(00)	SCHOOL DIST 76	MUNDELEIN	\$181,832	01/30/2012
39-055-0610-25(00)	DECATUR SD 61	DECATUR	\$35,512	01/25/2012
44-063-0360-02(00)	HARRISON SD 36	WONDER LAKE	\$10,473	01/24/2012
44-063-0500-26(00)	HARVARD CUSD 50	HARVARD	\$375,347	01/24/2012
56-099-1590-02(00)	MOKENA SD 159	MOKENA	\$6,228	01/30/2012
56-099-1610-02(00)	SUMMIT HILL SD 161	FRANKFORT	\$27,042	01/30/2012
56-099-2100-16(00)	LINCOLN WAY CHSD 210	NEW LENOX	\$21,226	01/30/2012
56-099-365U-26(00)	VALLEY VIEW CUSD 365U	ROMEOVILLE	\$901,611	01/25/2012
			\$5,066,024	

Program: 2012 - 3695, Truants Alternative/Optional Ed.

<u>RCDT</u>	<u>District Name</u>	<u>City</u>	<u>Budget Amt</u>	<u>Approval Date</u>
01-001-1720-22(10)	QUINCY SD 172	QUINCY	\$81,163	01/24/2012
02-002-0010-22(11)	CAIRO SD 1	CAIRO	\$50,918	01/24/2012

**ILLINOIS STATE BOARD OF EDUCATION
FUNDING AND DISBURSEMENT SERVICES DIVISION
100 NORTH FIRST STREET, SPRINGFIELD, IL 62777**

Approved Grants Less Than 1 Million

Thru Date: (01/13/2012-01/31/2012)

50-082-1890-22(11)	BOARD OF EDUCATION SD 189	EAST ST LOUIS	\$145,834	01/24/2012
			\$277,915	

Program: 2012 - 3705, Early Childhood - Block Grant

<u>RCDT</u>	<u>District Name</u>	<u>City</u>	<u>Budget Amt</u>	<u>Approval Date</u>
01-001-0020-26(01)	LIBERTY CUSD 2	LIBERTY	\$60,243	01/23/2012
07-016-1460-04(01)	COMMUNITY CONS SCH DIST 146	TINLEY PARK	\$92,575	01/26/2012
07-016-1470-02(01)	W HARVEY-DIXMOOR PUB SD 147	HARVEY	\$206,419	01/26/2012
11-023-0010-26(01)	SHILOH CUSD 1	HUME	\$65,120	01/18/2012
17-020-0180-26(01)	BLUE RIDGE CUSD 18	FARMER CITY	\$52,625	01/23/2012
20-083-0010-26(00)	GALATIA CUSD 1	GALATIA	\$115,000	01/20/2012
31-045-005P-00(01)	KANE COUNTY	GENEVA	\$290,389	01/23/2012
32-046-0020-26(01)	HERSCHER CUSD 2	HERSCHER	\$63,800	01/17/2012
32-046-0610-02(01)	BRADLEY SD 61	BRADLEY	\$88,172	01/20/2012
34-049-014P-00(00)	CHERISHED CHILDREN EARLY LEARNIN	MUNDELEIN	\$63,504	01/16/2012
35-050-1250-02(01)	OGLESBY ESD 125	OGLESBY	\$43,962	01/20/2012
38-060-1260-26(00)	HAVANA CUSD 126	HAVANA	\$220,000	01/17/2012
40-042-1000-26(01)	JERSEY CUSD 100	JERSEYVILLE	\$125,000	01/18/2012
41-057-0100-26(00)	COLLINSVILLE CUSD 10	COLLINSVILLE	\$393,776	01/23/2012
41-057-0110-26(01)	ALTON CUSD 11	ALTON	\$192,084	01/24/2012
46-005-0010-26(01)	BROWN COUNTY CUSD 1	MOUNT STERLI	\$75,647	01/19/2012
46-009-0150-26(01)	BEARDSTOWN CUSD 15	BEARDSTOWN	\$149,039	01/21/2012
48-072-030P-00(01)	PEORIA CITIZENS CFEO INC	PEORIA	\$166,188	01/23/2012
51-084-1860-25(01)	SPRINGFIELD SD 186	SPRINGFIELD	\$335,848	01/16/2012
56-099-209U-26(00)	WILMINGTON CUSD 209U	WILMINGTON	\$120,000	01/19/2012
65-108-9725-51(01)	CLAY COUNTY	FLORA	\$160,000	01/20/2012
			\$3,079,391	

Program: 2012 - 3730, ROE/ISC Operations

<u>RCDT</u>	<u>District Name</u>	<u>City</u>	<u>Budget Amt</u>	<u>Approval Date</u>
02-000-0000-00(00)	REGIONAL OFFICE OF EDUCATION02	ULLIN	\$25,511	01/25/2012
08-000-0000-00(00)	REGIONAL OFFICE OF EDUCATION08	STOCKTON	\$27,353	01/24/2012
10-000-0000-00(00)	REGIONAL OFFICE OF EDUCATION10	TAYLORVILLE	\$25,716	01/24/2012
16-000-0000-00(00)	REGIONAL OFFICE OF EDUCATION16	DEKALB	\$29,791	01/17/2012
20-000-0000-00(00)	REGIONAL OFFICE OF EDUCATION20	HARRISBURG	\$28,131	01/26/2012
48-000-0000-00(00)	REGIONAL OFFICE OF EDUCATION48	PEORIA	\$36,636	01/17/2012
			\$173,138	

Program: 2012 - 3962, Arts Education & Foreign Language Assistanc

<u>RCDT</u>	<u>District Name</u>	<u>City</u>	<u>Budget Amt</u>	<u>Approval Date</u>
02-077-1010-26(M1)	MERIDIAN CUSD 101	MOUNDS	\$73,295	01/19/2012
			\$73,295	

Program: 2012 - 4107, Title VI - Rural Education Initiative

<u>RCDT</u>	<u>District Name</u>	<u>City</u>	<u>Budget Amt</u>	<u>Approval Date</u>
01-075-0100-26(00)	PIKELAND CUSD 10	PITTSFIELD	\$26,526	01/18/2012
02-061-0010-26(00)	MASSAC UD 1	METROPOLIS	\$45,960	01/26/2012
10-068-0120-26(00)	LITCHFIELD CUD 12	LITCHFIELD	\$30,442	01/27/2012
13-058-6000-16(00)	SALEM CHSD 600	SALEM	\$16,582	01/20/2012

**ILLINOIS STATE BOARD OF EDUCATION
FUNDING AND DISBURSEMENT SERVICES DIVISION
100 NORTH FIRST STREET, SPRINGFIELD, IL 62777**

Approved Grants Less Than 1 Million

Thru Date:(01/13/2012-01/31/2012)

21-028-0990-26(00)	CHRISTOPHER UNIT SCHOOL DIST 99	CHRISTOPHER	\$17,551	01/17/2012
21-028-1030-13(00)	BENTON CHSD 103	BENTON	\$11,518	01/30/2012
35-050-0400-17(00)	STREATOR TWP HSD 40	STREATOR	\$20,132	01/23/2012
			\$168,711	

Program: 2012 - 4300, Title I - Low Income

<u>RCDT</u>	<u>District Name</u>	<u>City</u>	<u>Budget Amt</u>	<u>Approval Date</u>
02-061-0010-26(00)	MASSAC UD 1	METROPOLIS	\$545,963	01/18/2012
02-077-1010-26(00)	MERIDIAN CUSD 101	MOUNDS	\$665,956	01/18/2012
02-091-0660-22(00)	DONGOLA CUSD 66	DONGOLA	\$187,741	01/18/2012
05-016-0230-02(00)	PROSPECT HEIGHTS SD 23	PROSPECT HTS	\$154,571	01/18/2012
05-016-0280-02(00)	NORTHBROOK SD 28	NORTHBROOK	\$101,395	01/18/2012
05-016-0650-04(00)	EVANSTON C C SCHOOL DIST 65	EVANSTON	\$952,235	01/26/2012
05-016-2250-17(00)	NORTHFIELD THSD 225	GLENVIEW	\$320,863	01/18/2012
06-016-0930-02(00)	HILLSIDE SD 93	HILLSIDE	\$123,953	01/18/2012
06-016-0960-02(00)	RIVERSIDE SCHOOL DIST 96	RIVERSIDE	\$106,300	01/18/2012
07-016-1180-04(00)	PALOS CCSD 118	PALOS PARK	\$198,378	01/24/2012
07-016-1510-02(00)	SOUTH HOLLAND SD 151	SOUTH HOLLAN	\$530,267	01/20/2012
07-016-1570-02(00)	HOOVER-SCHRUM MEMORIAL SD 157	CALUMET CITY	\$278,178	01/20/2012
07-016-1600-02(00)	COUNTRY CLUB HILLS SD 160	COUNTRY CLUB H	\$459,973	01/20/2012
09-010-1690-04(00)	ST JOSEPH CCD 169	ST JOSEPH	\$49,083	01/26/2012
09-027-0050-26(00)	GIBSON-MELVIN-SIBLEY CUSD 5	GIBSON CITY	\$130,488	01/26/2012
10-068-0030-26(00)	HILLSBORO CUSD 3	HILLSBORO	\$586,087	01/26/2012
10-068-0220-26(00)	NOKOMIS CUSD 22	NOKOMIS	\$174,289	01/26/2012
11-012-003C-26(00)	MARTINSVILLE CUSD 3C	MARTINSVILLE	\$70,459	01/20/2012
11-012-004C-26(00)	CASEY-WESTFIELD CUSD 4C	CASEY	\$261,716	01/18/2012
12-051-0200-26(00)	COMMUNITY UNIT SCHOOL DIST NO 20	LAWRENCEVILL	\$384,347	01/13/2012
13-058-1330-02(00)	CENTRAL CITY SD 133	CENTRALIA	\$87,404	01/13/2012
19-022-0410-02(00)	BOARD OF EDUCATION DISTRICT 41	GLEN ELLYN	\$232,889	01/13/2012
19-022-0450-02(00)	VILLA PARK SD 45	VILLA PARK	\$552,357	01/18/2012
19-022-0930-04(00)	COMMUNITY CONS SCHOOL DIST 93	CAROL STREAM	\$339,324	01/13/2012
19-022-1810-04(00)	COMM CONS SCH DIST 181	BURR RIDGE	\$221,268	01/18/2012
19-022-2030-26(00)	COMMUNITY UNIT DISTRICT 203	NAPERVILLE	\$631,844	01/18/2012
20-083-0020-26(00)	CARRIER MILLS-STONEFORT CUSD 2	CARRIER MILLS	\$153,249	01/18/2012
20-096-2000-26(00)	NORTH WAYNE CUSD 200	CISNE	\$78,248	01/18/2012
24-032-060C-04(00)	SARATOGA CCSD 60C	MORRIS	\$83,424	01/18/2012
25-041-0050-04(00)	COUNTY OF JEFFERSON	OPDYKE	\$118,234	01/13/2012
28-006-1030-22(00)	DEPUE CUSD 103	DEPUE	\$152,460	01/26/2012
28-037-2280-26(00)	GENESEO CUSD 228	GENESEO	\$187,978	01/18/2012
34-049-0760-02(00)	SCHOOL DIST 76	MUNDELEIN	\$245,659	01/20/2012
34-049-0950-26(00)	COMMUNITY UNIT SCHOOL DIST 95	LAKE ZURICH	\$228,748	01/13/2012
34-049-1140-02(00)	FOX LAKE GSD 114	SPRING GROVE	\$125,126	01/18/2012
35-050-0400-17(00)	STREATOR TWP HSD 40	STREATOR	\$277,293	01/20/2012
38-054-0610-04(00)	CHESTER-EAST LINCOLN CCSD 61	LINCOLN	\$39,556	01/26/2012
38-060-1910-26(00)	MIDWEST CENTRAL CUD 191	MANITO	\$172,922	01/26/2012
40-056-0050-26(00)	MT OLIVE CUSD 5	MOUNT OLIVE	\$97,353	01/20/2012
46-009-0640-26(00)	VIRGINIA CUSD 64	VIRGINIA	\$52,424	01/20/2012
48-072-3250-26(00)	PEORIA HEIGHTS CUSD 325	PEORIA HEIGHT	\$311,124	01/13/2012

**ILLINOIS STATE BOARD OF EDUCATION
FUNDING AND DISBURSEMENT SERVICES DIVISION
100 NORTH FIRST STREET, SPRINGFIELD, IL 62777**

Approved Grants Less Than 1 Million

Thru Date:(01/13/2012-01/31/2012)

49-081-0300-17(00)	UNITED THSD 30	EAST MOLINE	\$493,865	01/13/2012
49-081-0370-02(00)	EAST MOLINE SD 37	EAST MOLINE	\$857,671	01/20/2012
49-081-3000-26(00)	ROCKRIDGE CUSD 300	TAYLOR RIDGE	\$84,906	01/18/2012
50-082-0850-02(00)	SHILOH VILLAGE SD 85	OFALLON	\$59,065	01/18/2012
50-082-1190-02(00)	BELLE VALLEY SD 119	BELLEVILLE	\$238,092	01/20/2012
54-092-0040-26(00)	GEORGETOWN-RIDGE FARM CUSD 4	GEORGETOWN	\$480,510	01/25/2012
54-092-0610-03(00)	ARMSTRONG-ELLIS CSD 61	ARMSTRONG	\$73,029	01/18/2012
54-092-2250-17(00)	ARMSTRONG TWP HSD 225	ARMSTRONG	\$21,115	01/18/2012
56-099-157C-04(00)	FRANKFORT CCSD 157C	FRANKFORT	\$102,017	01/20/2012
			\$13,081,396	

Program: 2012 - 4340, Title I - Migrant Education

<u>RCDT</u>	<u>District Name</u>	<u>City</u>	<u>Budget Amt</u>	<u>Approval Date</u>
47-000-0000-00(00)	REGIONAL OFFICE OF EDUCATION47	DIXON	\$24,303	01/19/2012
			\$24,303	

Program: 2012 - 4421, Title IV - 21st Century Comm Learning Centers

<u>RCDT</u>	<u>District Name</u>	<u>City</u>	<u>Budget Amt</u>	<u>Approval Date</u>
01-001-1720-22(12)	QUINCY SD 172	QUINCY	\$149,684	01/19/2012
41-057-0110-26(12)	ALTON CUSD 11	ALTON	\$254,780	01/20/2012
49-000-0000-00(21)	REGIONAL OFFICE OF EDUCATION49	MOLINE	\$118,050	01/26/2012
65-108-0240-51(12)	NATIONAL MUSEUM OF MEXICAN ART	CHICAGO	\$299,792	01/23/2012
65-108-1875-51(12)	URBAN GATEWAYS	CHICAGO	\$150,000	01/13/2012
65-108-1885-51(12)	QUAD COUNTY URBAN LEAGUE	AURORA	\$600,000	01/30/2012
65-108-1890-51(12)	JACKSON INITIATIVE INC	VILLA RIDGE	\$415,000	01/30/2012
65-108-5520-51(22)	FAMILY FOCUS	CHICAGO	\$474,650	01/20/2012
			\$2,461,956	

Program: 2012 - 4600, Fed. - Sp. Ed. - Pre-School Flow Through

<u>RCDT</u>	<u>District Name</u>	<u>City</u>	<u>Budget Amt</u>	<u>Approval Date</u>
06-016-0980-61(00)	FED OF DISTRICTS FOR SPEC ED	BERWYN	\$194,432	01/26/2012
13-058-8010-60(00)	KASKASKIA SPECIAL ED DIST 801	CENTRALIA	\$164,532	01/23/2012
17-053-0000-61(00)	LIVINGSTON CO SPEC SERVICES	PONTIAC	\$62,116	01/17/2012
19-022-2000-26(00)	COMMUNITY UNIT SCHOOL DIST 200	WHEATON	\$112,453	01/23/2012
32-038-8010-60(00)	IROQUOIS SPECIAL EDUC ASSN	CRESCENT CITY	\$20,731	01/30/2012
48-072-1500-25(00)	BOARD OF EDUCATION CITY OF	PEORIA	\$316,507	01/20/2012
50-082-8010-60(00)	BELLEVILLE AREA SP SERV COOP	BELLEVILLE	\$305,771	01/23/2012
55-098-0000-61(00)	BI COUNTY SPECIAL EDUC COOP	STERLING	\$101,291	01/13/2012
			\$1,277,833	

Program: 2012 - 4620, Fed. - Sp. Ed. - I.D.E.A. - Flow Through

<u>RCDT</u>	<u>District Name</u>	<u>City</u>	<u>Budget Amt</u>	<u>Approval Date</u>
02-061-0010-26(00)	MASSAC UD 1	METROPOLIS	\$603,904	01/27/2012
32-046-0530-02(00)	BOURBONNAIS ESD 53	BOURBONNAIS	\$529,817	01/18/2012
34-049-9000-90(00)	PRAIRIE CROSSING CHARTER SCHOOL	GRAYSLAKE	\$60,429	01/18/2012
47-052-1700-61(00)	LEE COUNTY SPEC EDUC ASSOC	DIXON	\$764,975	01/30/2012
51-084-003A-26(00)	ROCHESTER CUSD 3A	ROCHESTER	\$401,112	01/13/2012
65-108-9000-80(RS)	ILLINOIS DEPT OF HUMAN SERVICES	SPRINGFIELD	\$177,382	01/30/2012
			\$2,537,619	

ILLINOIS STATE BOARD OF EDUCATION
FUNDING AND DISBURSEMENT SERVICES DIVISION
 100 NORTH FIRST STREET, SPRINGFIELD, IL 62777
Approved Grants Less Than 1 Million
 Thru Date: (01/13/2012-01/31/2012)

Program: 2012 - 4630, Fed. - Sp. Ed. - I.D.E.A. - Discretionary

<u>RCDT</u>	<u>District Name</u>	<u>City</u>	<u>Budget Amt</u>	<u>Approval Date</u>
05-016-085P-00(1A)	KENNETH YOUNG CENTER	ELK GROVE VILL	\$12,135	01/25/2012
19-022-0660-61(02)	SCH ASSOC SPEC ED DUPAGE SA	NAPERVILLE	\$115,000	01/25/2012
			\$127,135	

Program: 2012 - 4745, CTE - Perkins - Secondary

<u>RCDT</u>	<u>District Name</u>	<u>City</u>	<u>Budget Amt</u>	<u>Approval Date</u>
01-001-1720-46(00)	WEST CENTRAL REGION - EFE 24	QUINCY	\$160,174	01/23/2012
08-000-0000-46(00)	EAGLE RIDGE DELIVERY SYS-EFE	STOCKTON	\$57,344	01/19/2012
25-000-0000-46(00)	REND LAKE REG DEL SYSTEM-EFE	MT VERNON	\$108,688	01/24/2012
26-000-0000-46(00)	WESTERN AREA CAREER SYSTEM	MACOMB	\$139,008	01/24/2012
31-000-0000-46(00)	VALLEY EDUC EMLPMT SYSTM-EFE	SUGAR GROVE	\$650,094	01/19/2012
			\$1,115,308	

Program: 2012 - 4905, Title III - Immigrant Education Program (IEP)

<u>RCDT</u>	<u>District Name</u>	<u>City</u>	<u>Budget Amt</u>	<u>Approval Date</u>
07-016-1230-02(00)	OAK LAWN-HOMETOWN S D 123	OAK LAWN	\$11,709	01/24/2012
07-016-1275-02(00)	CHICAGO RIDGE SD 1275	CHICAGO RIDGE	\$16,446	01/26/2012
56-099-365U-26(00)	VALLEY VIEW CUSD 365U	ROMEDEVILLE	\$50,750	01/25/2012
			\$78,905	

Program: 2012 - 4909, Title III - Lang Inst Prog-Limited Eng LIPLEP

<u>RCDT</u>	<u>District Name</u>	<u>City</u>	<u>Budget Amt</u>	<u>Approval Date</u>
05-016-0230-02(00)	PROSPECT HEIGHTS SD 23	PROSPECT HTS	\$43,960	01/19/2012
06-016-0925-02(00)	WESTCHESTER SD 92-5	WESTCHESTER	\$34,593	01/30/2012
06-016-2120-16(00)	LEYDEN COMMUNITY HIGH SCHOOL 212	FRANKLIN PARK	\$38,883	01/30/2012
07-016-1230-02(00)	OAK LAWN-HOMETOWN S D 123	OAK LAWN	\$60,811	01/24/2012
07-016-1275-02(00)	CHICAGO RIDGE SD 1275	CHICAGO RIDGE	\$52,290	01/26/2012
07-016-1440-02(00)	PRAIRIE-HILLS ELEM SD 144	MARKHAM	\$10,500	01/17/2012
07-016-1560-02(00)	COOK COUNTY SD 156	CALUMET CITY	\$31,160	01/18/2012
17-064-0050-26(00)	MCLEAN COUNTY UD 5	NORMAL	\$42,750	01/25/2012
19-022-0040-02(00)	ADDISON SCHOOL DIST 4	ADDISON	\$197,578	01/25/2012
19-022-0930-04(00)	COMMUNITY CONS SCHOOL DIST 93	CAROL STREAM	\$118,440	01/30/2012
19-022-0990-16(00)	COMMUNITY HIGH SCHOOL DIST 99	DOWNERS GRO	\$6,558	01/19/2012
28-006-1030-22(00)	DEPUE CUSD 103	DEPUE	\$47,712	01/25/2012
31-045-1290-22(00)	AURORA WEST USD 129	AURORA	\$356,800	01/24/2012
31-045-3000-26(00)	COMMUNITY UNIT SCHOOL DIST 300	CARPENTERSVIL	\$477,471	01/24/2012
31-045-3020-26(00)	KANELAND CUSD 302	MAPLE PARK	\$15,010	01/26/2012
34-049-0760-02(00)	SCHOOL DIST 76	MUNDELEIN	\$63,650	01/30/2012
39-055-0610-25(00)	DECATUR SD 61	DECATUR	\$20,538	01/25/2012
44-063-0500-26(00)	HARVARD CUSD 50	HARVARD	\$155,566	01/24/2012
56-099-1610-02(00)	SUMMIT HILL SD 161	FRANKFORT	\$20,240	01/30/2012
56-099-365U-26(00)	VALLEY VIEW CUSD 365U	ROMEDEVILLE	\$432,436	01/25/2012
			\$2,226,946	

Program: 2012 - 4910, Learn and Serve America

<u>RCDT</u>	<u>District Name</u>	<u>City</u>	<u>Budget Amt</u>	<u>Approval Date</u>
34-049-0600-26(00)	COMMUNITY UNIT SCHOOL DIST 60	WAUKEGAN	\$2,612	01/19/2012

ILLINOIS STATE BOARD OF EDUCATION
FUNDING AND DISBURSEMENT SERVICES DIVISION
 100 NORTH FIRST STREET, SPRINGFIELD, IL 62777
Approved Grants Less Than 1 Million
 Thru Date: (01/13/2012-01/31/2012)

\$2,612

Program: 2012 - 4932, Title II - Teacher Quality

<u>RCDT</u>	<u>District Name</u>	<u>City</u>	<u>Budget Amt</u>	<u>Approval Date</u>
02-061-0010-26(00)	MASSAC UD 1	METROPOLIS	\$123,627	01/18/2012
02-077-1010-26(00)	MERIDIAN CUSD 101	MOUNDS	\$100,308	01/18/2012
02-091-0660-22(00)	DONGOLA CUSD 66	DONGOLA	\$9,347	01/18/2012
05-016-0230-02(00)	PROSPECT HEIGHTS SD 23	PROSPECT HTS	\$33,026	01/18/2012
05-016-0280-02(00)	NORTHBROOK SD 28	NORTHBROOK	\$27,672	01/18/2012
05-016-0540-04(00)	SCHAUMBURG CCSD 54	SCHAUMBURG	\$301,003	01/26/2012
05-016-0650-04(00)	EVANSTON C C SCHOOL DIST 65	EVANSTON	\$217,137	01/26/2012
05-016-2110-17(00)	TOWNSHIP HSD 211	PALATINE	\$215,615	01/18/2012
05-016-2250-17(00)	NORTHFIELD THSD 225	GLENVIEW	\$64,232	01/18/2012
06-016-0870-02(00)	BERKELEY SD 87	BERKELEY	\$99,480	01/17/2012
06-016-0930-02(00)	HILLSIDE SD 93	HILLSIDE	\$14,832	01/17/2012
06-016-0960-02(00)	RIVERSIDE SCHOOL DIST 96	RIVERSIDE	\$21,920	01/18/2012
06-016-0980-02(00)	COUNTY OF COOK SCHOOL DIST 98	BERWYN	\$93,963	01/20/2012
07-016-1180-04(00)	PALOS CCSD 118	PALOS PARK	\$52,736	01/24/2012
07-016-1510-02(00)	SOUTH HOLLAND SD 151	SOUTH HOLLAN	\$79,544	01/20/2012
07-016-1570-02(00)	HOOVER-SCHRUM MEMORIAL SD 157	CALUMET CITY	\$36,704	01/20/2012
07-016-1600-02(00)	COUNTRY CLUB HILLS SD 160	COUNTRY CLUB H	\$46,435	01/20/2012
07-016-1690-02(00)	FORD HEIGHTS SD 169	FORD HEIGHTS	\$138,267	01/13/2012
07-016-1700-02(00)	CHICAGO HEIGHTS SD 170	CHICAGO HEIGH	\$278,588	01/24/2012
09-010-0040-26(00)	CHAMPAIGN CUSD 4	CHAMPAIGN	\$515,393	01/26/2012
09-010-1690-04(00)	ST JOSEPH CCD 169	ST JOSEPH	\$11,736	01/26/2012
09-027-0050-26(00)	GIBSON-MELVIN-SIBLEY CUSD 5	GIBSON CITY	\$47,052	01/26/2012
10-068-0030-26(00)	HILLSBORO CUSD 3	HILLSBORO	\$109,561	01/26/2012
10-068-0220-26(00)	NOKOMIS CUSD 22	NOKOMIS	\$48,358	01/26/2012
11-012-003C-26(00)	MARTINSVILLE CUSD 3C	MARTINSVILLE	\$21,869	01/20/2012
11-012-004C-26(00)	CASEY-WESTFIELD CUSD 4C	CASEY	\$58,537	01/18/2012
12-051-0200-26(00)	COMMUNITY UNIT SCHOOL DIST NO 20	LAWRENCEVILL	\$167,745	01/13/2012
13-058-1330-02(00)	CENTRAL CITY SD 133	CENTRALIA	\$20,907	01/13/2012
17-064-0050-26(00)	MCLEAN COUNTY UD 5	NORMAL	\$429,570	01/26/2012
19-022-0410-02(00)	BOARD OF EDUCATION DISTRICT 41	GLEN ELLYN	\$94,611	01/13/2012
19-022-0450-02(00)	VILLA PARK SD 45	VILLA PARK	\$183,936	01/18/2012
19-022-0930-04(00)	COMMUNITY CONS SCHOOL DIST 93	CAROL STREAM	\$92,764	01/13/2012
19-022-1810-04(00)	COMM CONS SCH DIST 181	BURR RIDGE	\$105,971	01/18/2012
19-022-2030-26(00)	COMMUNITY UNIT DISTRICT 203	NAPERVILLE	\$335,770	01/18/2012
20-083-0020-26(00)	CARRIER MILLS-STONEFORT CUSD 2	CARRIER MILLS	\$41,296	01/18/2012
20-096-2000-26(00)	NORTH WAYNE CUSD 200	CISNE	\$12,335	01/18/2012
24-032-060C-04(00)	SARATOGA CCSD 60C	MORRIS	\$16,249	01/18/2012
25-041-0050-04(00)	COUNTY OF JEFFERSON	OPDYKE	\$15,628	01/13/2012
28-006-1030-22(00)	DEPUE CUSD 103	DEPUE	\$16,940	01/26/2012
28-037-2280-26(00)	GENESEO CUSD 228	GENESEO	\$68,374	01/18/2012
32-046-1110-25(00)	KANKAKEE SD 111	KANKAKEE	\$526,917	01/24/2012
34-049-0600-26(00)	COMMUNITY UNIT SCHOOL DIST 60	WAUKEGAN	\$812,548	01/18/2012
34-049-0760-02(00)	SCHOOL DIST 76	MUNDELEIN	\$35,058	01/20/2012
34-049-0950-26(00)	COMMUNITY UNIT SCHOOL DIST 95	LAKE ZURICH	\$103,058	01/13/2012

**ILLINOIS STATE BOARD OF EDUCATION
FUNDING AND DISBURSEMENT SERVICES DIVISION
100 NORTH FIRST STREET, SPRINGFIELD, IL 62777**

Approved Grants Less Than 1 Million

Thru Date:(01/13/2012-01/31/2012)

34-049-1140-02(00)	FOX LAKE GSD 114	SPRING GROVE	\$39,196	01/18/2012
34-049-1160-26(00)	ROUND LAKE AREA SD 116	ROUND LAKE	\$295,251	01/17/2012
35-050-0400-17(00)	STREATOR TWP HSD 40	STREATOR	\$40,360	01/20/2012
38-054-0610-04(00)	CHESTER-EAST LINCOLN CCSD 61	LINCOLN	\$7,415	01/26/2012
38-060-1910-26(00)	MIDWEST CENTRAL CUD 191	MANITO	\$84,693	01/26/2012
40-056-0050-26(00)	MT OLIVE CUSD 5	MOUNT OLIVE	\$23,954	01/20/2012
41-057-0110-26(00)	ALTON CUSD 11	ALTON	\$511,429	01/13/2012
46-009-0640-26(00)	VIRGINIA CUSD 64	VIRGINIA	\$15,272	01/20/2012
48-072-3250-26(00)	PEORIA HEIGHTS CUSD 325	PEORIA HEIGHT	\$38,836	01/13/2012
49-081-0300-17(00)	UNITED THSD 30	EAST MOLINE	\$85,778	01/13/2012
49-081-0370-02(00)	EAST MOLINE SD 37	EAST MOLINE	\$244,201	01/20/2012
49-081-3000-26(00)	ROCKRIDGE CUSD 300	TAYLOR RIDGE	\$37,069	01/18/2012
50-082-0850-02(00)	SHILOH VILLAGE SD 85	OFALLON	\$9,402	01/18/2012
50-082-1190-02(00)	BELLE VALLEY SD 119	BELLEVILLE	\$33,015	01/20/2012
54-092-0040-26(00)	GEORGETOWN-RIDGE FARM CUSD 4	GEORGETOWN	\$87,048	01/25/2012
54-092-0610-03(00)	ARMSTRONG-ELLIS CSD 61	ARMSTRONG	\$7,810	01/18/2012
54-092-2250-17(00)	ARMSTRONG TWP HSD 225	ARMSTRONG	\$4,459	01/18/2012
56-099-157C-04(00)	FRANKFORT CCSD 157C	FRANKFORT	\$26,112	01/20/2012
56-099-365U-26(00)	VALLEY VIEW CUSD 365U	ROMEDEVILLE	\$784,234	01/20/2012
			\$8,222,153	

Program: 2012 - 4972, Technology - Enhancing Education-Competitiv

<u>RCDT</u>	<u>District Name</u>	<u>City</u>	<u>Budget Amt</u>	<u>Approval Date</u>
04-101-3230-26(00)	WINNEBAGO CUSD 323	WINNEBAGO	\$184,122	01/13/2012
38-060-1910-26(00)	MIDWEST CENTRAL CUD 191	MANITO	\$178,908	01/20/2012
			\$363,030	

ILLINOIS STATE BOARD OF EDUCATION
Financial Status Report
July 1, 2011 through January 31, 2012
(Fiscal Year 2012)

	Appropriation Amount	Expenditures to Date	Unexpended Appropriation	Percentage spent YTD	Percentage Unexpended
<u>General Revenue Fund</u>					
Personal Services and Related Expenditures	\$ 16,745,700	\$ 9,768,961	\$ 6,976,739	58.34%	41.66%
Contractual Services	4,500,000	1,971,366	2,528,634	43.81%	56.19%
Travel	232,450	49,338	183,112	21.23%	78.77%
Commodities	71,300	31,066	40,234	43.57%	56.43%
Printing	64,700	265	64,435	0.41%	99.59%
Equipment	132,200	43,039	89,162	32.56%	67.44%
Telecommunications	383,800	200,596	183,204	52.27%	47.73%
Operation of Automotive Equipment	23,800	9,087	14,713	38.18%	61.82%
Lump Sums	26,946,301	6,642,259	20,304,042	24.65%	75.35%
<i>Sub-total</i>	49,100,251	18,715,976	30,384,275	38.12%	61.88%
Awards and Grants	2,562,813,265	1,145,124,662	1,417,688,603	44.68%	55.32%
Total General Revenue Fund	\$ 2,611,913,516	\$ 1,163,840,638	\$ 1,448,072,878	44.56%	55.44%
<u>Education Assistance Fund</u>					
Awards and Grants	\$ 309,631,376	\$ 309,631,376	\$ -	100.00%	0.00%
<u>Common School Fund</u>					
General State Aid	3,828,841,763	2,255,133,420	1,573,708,343	58.90%	41.10%
<u>Teacher Certification Fee Revolving Fund</u>					
Lump Sums	\$ 3,700,000	\$ 344,136	\$ 3,355,864	9.30%	90.70%

ILLINOIS STATE BOARD OF EDUCATION
Financial Status Report
July 1, 2011 through January 31, 2012
(Fiscal Year 2012)

	Appropriation Amount	Expenditures to Date	Unexpended Appropriation	Percentage spent YTD	Percentage Unexpended
<u>Drivers Education Fund</u>					
Personal Services and Related Expenditures	\$ 95,600	\$ 3,314	\$ 92,286	3.47%	96.53%
Awards and Grants	24,229,600	12,114,785	12,114,815	50.00%	50.00%
Total Drivers Education Fund	\$ 24,325,200	\$ 12,118,099	\$ 12,207,101	49.82%	50.18%
<u>School Dist. Emergency Financial Asst. Fund</u>					
Awards and Grants	\$ 1,000,000	\$ -	\$ 1,000,000	0.00%	100.00%
<u>SBE Special Purpose Trust Fund</u>					
Lump Sums	\$ 15,500,000	\$ 2,125,799	\$ 13,374,201	13.71%	86.29%
<u>SBE Teacher Certification Institution Fund</u>					
Lump Sums	\$ 2,208,900	\$ 2,628	\$ 2,206,272	0.12%	99.88%
<u>SBE Federal Department of Agriculture Fund</u>					
Personal Services and Related Expenditures	\$ 6,018,800	\$ 3,085,283	\$ 2,933,517	51.26%	48.74%
Contractual Services	3,910,000	755,078	3,154,922	19.31%	80.69%
Travel	400,000	115,668	284,332	28.92%	71.08%
Commodities	85,000	1,279	83,721	1.50%	98.50%
Printing	156,300	-	156,300	0.00%	100.00%
Equipment	250,000	199,706	50,294	79.88%	20.12%
Telecommunications	50,000	-	50,000	0.00%	100.00%
Sub-total	10,870,100	4,157,014	6,713,086	38.24%	61.76%
Awards and Grants	725,914,300	284,763,069	441,151,231	39.23%	60.77%
Total SBE Federal Department of Agriculture Fund	\$ 736,784,400	\$ 288,920,084	\$ 447,864,316	39.21%	60.79%

ILLINOIS STATE BOARD OF EDUCATION
Financial Status Report
July 1, 2011 through January 31, 2012
(Fiscal Year 2012)

	Appropriation Amount	Expenditures to Date	Unexpended Appropriation	Percentage spent YTD	Percentage Unexpended
<u>SBE Federal Agency Services Fund</u>					
Personal Services and Related Expenditures	\$ 175,000	\$ 79,993	\$ 95,007	45.71%	54.29%
Contractual Services	900,000	35,910	864,090	3.99%	96.01%
Travel	30,000	7,546	22,454	25.15%	74.85%
Commodities	20,000	-	20,000	0.00%	100.00%
Printing	700	-	700	0.00%	100.00%
Equipment	11,000	-	11,000	0.00%	100.00%
Telecommunications	9,000	-	9,000	0.00%	100.00%
<i>Sub-total</i>	1,145,700	123,449	1,022,251	10.77%	89.23%
Awards and Grants	2,500,000	87,311	2,412,689	3.49%	96.51%
Total SBE Federal Agency Services Fund	\$ 3,645,700	\$ 210,760	\$ 3,434,940	5.78%	94.22%
<u>SBE Federal Department of Education Fund</u>					
Personal Services and Related Expenditures	\$ 23,182,300	\$ 7,970,005	\$ 15,212,295	34.38%	65.62%
Contractual Services	19,400,000	2,820,637	16,579,363	14.54%	85.46%
Travel	1,600,000	254,196	1,345,804	15.89%	84.11%
Commodities	305,000	10,257	294,743	3.36%	96.64%
Printing	341,000	10,660	330,340	3.13%	96.87%
Equipment	455,000	50,961	404,039	11.20%	88.80%
Telecommunications	400,000	-	400,000	0.00%	100.00%
Lump Sums	23,780,300	14,373,260	9,407,040	60.44%	39.56%
<i>Sub-total</i>	69,463,600	25,489,975	43,973,625	36.70%	63.30%
Awards and Grants	2,700,940,700	501,677,579	2,199,263,121	18.57%	81.43%
Total SBE Federal Department of Education Fund	\$ 2,770,404,300	\$ 527,167,555	\$ 2,243,236,745	19.03%	80.97%
<u>Charter Schools Revolving Loan Program Fund</u>					
Awards and Grants	\$ 20,000	\$ -	\$ 20,000	0.00%	100.00%
<u>School Infrastructure Fund</u>					
Personal Services and Related Expenditures	\$ 726,800	\$ 406,575	\$ 320,225	55.94%	44.06%

ILLINOIS STATE BOARD OF EDUCATION
Financial Status Report
July 1, 2011 through January 31, 2012
(Fiscal Year 2012)

	Appropriation Amount	Expenditures to Date	Unexpended Appropriation	Percentage spent YTD	Percentage Unexpended
<u>School Technology Revolving Loan Program Fund</u>					
Awards and Grants	\$ 5,000,000	\$ 381,300	\$ 4,618,700	7.63%	92.37%
<u>Temporary Relocation Expenses Revolving Grant Fund</u>					
Awards and Grants	\$ 1,400,000	\$ -	\$ 1,400,000	0.00%	100.00%
<u>Capital Development Fund</u>					
Grants for Educational Purposes	\$ 25,000,000	\$ -	\$ 25,000,000	0.00%	100.00%
<u>School Construction Fund</u>					
Construction Grants	\$ 100,000,000	\$ -	\$ 100,000,000	0.00%	100.00%
<u>Build Illinois Bond Fund</u>					
Construction Grants	\$ 1,459,964	\$ 1,040,345	\$ 419,619	71.26%	28.74%
<u>U.S. Dept. of Education Jobs Program Federal Trust Fund</u>					
Awards and Grants	\$ 163,000,000	\$ 79,435,227	\$ 83,564,773	48.73%	51.27%
<u>Personal Property Tax Replacement Fund</u>					
Awards and Grants	\$ 2,225,050	\$ 758,046	\$ 1,467,004	34.07%	65.93%
Grants for Educational Purposes	10,806,400	5,228,375	5,578,025	48.38%	51.62%
Total Personal Property Tax Replacement Fund	\$ 13,031,450	\$ 5,986,421	\$ 7,045,029	45.94%	54.06%
ISBE TOTALS	\$ 10,617,593,369	\$ 4,646,744,362	\$ 5,970,849,007	43.76%	56.24%

ILLINOIS STATE BOARD OF EDUCATION
Combined Financial Status Report
July 1, 2011 through January 31, 2012
(Fiscal Year 2012)

	Appropriation Amount	Expenditures to Date (Direct)	Federal Indirect Cost Recovery Expenditures	Unexpended Appropriation	Percentage spent YTD	Percentage Unexpended
All Funds						
Personal Services and Related Expenditures	\$ 48,477,067	\$ 21,314,130	\$ 1,532,867	\$ 25,630,070	43.97%	52.87%
Contractual Services	29,064,427	5,582,992	354,427	23,127,008	19.21%	79.57%
Travel	2,274,775	426,747	12,325	1,835,703	18.76%	80.70%
Commodities	491,172	42,602	9,872	438,698	8.67%	89.32%
Printing	562,700	10,925	-	551,775	1.94%	98.06%
Equipment	934,025	293,706	85,825	554,494	31.45%	59.37%
Telecommunications	858,820	200,596	16,020	642,204	23.36%	74.78%
Operation of Automotive Equipment	23,800	9,087	-	14,713	38.18%	61.82%
Lump Sums	70,124,166	21,476,747	-	48,647,419	30.63%	69.37%
Sub-total	152,810,951	51,368,866	2,011,335	101,442,085	33.62%	66.38%
Awards and Grants	10,363,322,454	4,594,335,151	-	5,768,987,303	44.33%	55.67%
Construction Grants	101,459,964	1,040,345	-	100,419,619	1.03%	98.97%
Total All Funds	\$ 10,617,593,369	\$ 4,644,733,027	\$ 2,011,335	\$ 5,970,849,007	43.75%	56.24%

General Revenue Fund

Personal Services and Related Expenditures	\$ 16,745,700	\$ 9,768,961	\$ -	\$ 6,976,739	58.34%	41.66%
Contractual Services	4,500,000	1,971,366	-	2,528,634	43.81%	56.19%
Travel	232,450	49,338	-	183,112	21.23%	78.77%
Commodities	71,300	31,066	-	40,234	43.57%	56.43%
Printing	64,700	265	-	64,435	0.41%	99.59%
Equipment	132,200	43,039	-	89,162	32.56%	67.44%
Telecommunications	383,800	200,596	-	183,204	52.27%	47.73%
Operation of Automotive Equipment	23,800	9,087	-	14,713	38.18%	61.82%
Lump Sums	26,946,301	6,642,259	-	20,304,042	24.65%	75.35%
Sub-total	49,100,251	18,715,976	-	30,384,275	38.12%	61.88%
Awards and Grants	2,562,813,265	1,145,124,662	-	1,417,688,603	44.68%	55.32%
Total General Revenue Fund	\$ 2,611,913,516	\$ 1,163,840,638	\$ -	\$ 1,448,072,878	44.56%	55.44%

Other State Funds

Personal Services and Related Expenditures	\$ 822,400	\$ 409,889	\$ -	\$ 412,511	49.84%	50.16%
Lump Sums	21,408,900	2,472,563	-	18,936,337	11.55%	88.45%
Sub-total	22,231,300	2,882,452	-	19,348,848	12.97%	87.03%
Awards and Grants	4,208,154,189	2,583,247,303	-	1,624,906,886	61.39%	38.61%
Construction Grants	101,459,964	1,040,345	-	100,419,619	1.03%	98.97%
Total Other State Funds	\$ 4,331,845,453	\$ 2,587,170,099	\$ -	\$ 1,744,675,354	59.72%	40.28%

Federal Funds

Personal Services and Related Expenditures	\$ 29,376,100	\$ 11,135,281	\$ -	\$ 18,240,819	37.91%	62.09%
Contractual Services	24,210,000	3,611,625	-	20,598,375	14.92%	85.08%
Travel	2,030,000	377,409	-	1,652,591	18.59%	81.41%
Commodities	410,000	11,536	-	398,464	2.81%	97.19%
Printing	498,000	10,660	-	487,340	2.14%	97.86%
Equipment	716,000	250,668	-	465,332	35.01%	64.99%
Telecommunications	459,000	-	-	459,000	0.00%	100.00%
Lump Sums	23,780,300	14,373,260	-	9,407,040	60.44%	39.56%
Sub-total	81,479,400	29,770,438	-	51,708,962	36.54%	63.46%
Awards and Grants	3,592,355,000	865,963,186	-	2,726,391,814	24.11%	75.89%
Total Federal Funds	\$ 3,673,834,400	\$ 895,733,625	\$ -	\$ 2,778,100,775	24.38%	75.62%

ILLINOIS STATE BOARD OF EDUCATION
Awards and Grants Expenditures
July 1, 2011 through January 31, 2012
(Fiscal Year 2012)

	Appropriation Amount	Expenditures to Date	Unexpended Appropriation	Percentage spent YTD	Percentage Unexpended
<u>General Revenue Fund</u>					
General State Aid	\$ 309,631,375	\$ -	\$ 309,631,375	0.00%	100.00%
Agriculture Education	1,800,000	1,159,096	640,904	64.39%	35.61%
Arts and Foreign Language	1,000,000	203,975	796,025	20.40%	79.60%
Bilingual Education	62,497,807	12,723,002	49,774,805	20.36%	79.64%
Vocational Education Career and Technical Education	38,562,100	26,804,566	11,757,534	69.51%	30.49%
Early Childhood Education	320,573,700	172,882,987	147,690,713	53.93%	46.07%
Technology for Success	1,800,000	1,069,835	730,165	59.44%	40.56%
ROE School Bus Driver Training	70,000	70,000	-	100.00%	0.00%
Autism Training & Technical Assistance	100,000	55,555	44,445	55.56%	44.45%
Recording for Blind and Dyslexic	816,600	816,600	-	100.00%	0.00%
Children's Mental Health Partnership	1,458,000	796,176	661,824	54.61%	45.39%
Educational Materials Unit	1,421,100	875,000	546,100	61.57%	38.43%
Philip Rock Center Reimbursement	3,577,800	2,200,000	1,377,800	61.49%	38.51%
Alternative Education	9,341,900	4,457,887	4,884,013	47.72%	52.28%
Truant Alternative/Optional Education	14,059,000	9,142,913	4,916,087	65.03%	34.97%
National Board Certification Reimbursement	1,000,000	-	1,000,000	0.00%	100.00%
Teach America	1,225,000	389,477	835,523	31.79%	68.21%
Reorganization Incentive	1,800,000	1,593,037	206,963	88.50%	11.50%
Special Education-Private Tuition	177,743,700	131,885,846	45,857,854	74.20%	25.80%
Special Education-Extraordinary	343,375,700	158,892,200	184,483,500	46.27%	53.73%
Special Education-Personnel	465,700,000	269,546,449	196,153,551	57.88%	42.12%
Special Education-Orphanage Tuition	101,700,000	57,903,150	43,796,850	56.94%	43.06%
Transportation-Regular/Vocational	205,808,850	106,930,911	98,877,939	51.96%	48.04%
Transportation-Special Education	436,800,000	148,116,787	288,683,213	33.91%	66.09%
Free Lunch/Breakfast	26,300,000	18,575,462	7,724,538	70.63%	29.37%
Orphanage Tuition	13,000,000	4,500,145	8,499,855	34.62%	65.38%
Special Education-Summer School	11,200,000	10,749,986	450,014	95.98%	4.02%
Lowest Performing Schools	998,800	-	998,800	0.00%	100.00%
Tax Equivalent Grants	222,600	222,600	-	100.00%	0.00%
After School Matters	2,500,000	-	2,500,000	0.00%	100.00%
Total General Revenue Fund	\$ 2,556,084,032	\$ 1,142,563,642	\$ 1,413,520,390	44.70%	55.30%
<u>Education Assistance Fund</u>					
General State Aid	\$ 309,631,376	\$ 309,631,376	\$ -	100.00%	0.00%
Total Education Assistance Fund	\$ 309,631,376	\$ 309,631,376	\$ -	100.00%	0.00%

ILLINOIS STATE BOARD OF EDUCATION
Awards and Grants Expenditures
July 1, 2011 through January 31, 2012
(Fiscal Year 2012)

	Appropriation Amount	Expenditures to Date	Unexpended Appropriation	Percentage spent YTD	Percentage Unexpended
<u>Common School Fund</u>					
General State Aid	3,828,841,763	2,255,133,420	1,573,708,343	58.90%	41.10%
Total Common School Fund	\$ 3,828,841,763	\$ 2,255,133,420	\$ 1,573,708,343	58.90%	41.10%
<u>Drivers Education Fund</u>					
Driver Education Grants	\$ 24,229,600	\$ 12,114,785	\$ 12,114,815	50.00%	50.00%
Total Drivers Education Fund	\$ 24,229,600	\$ 12,114,785	\$ 12,114,815	50.00%	50.00%
<u>School Dist. Emergency Financial Asst. Fund</u>					
School District Emergency Financial Assistance	\$ 1,000,000	\$ -	\$ 1,000,000	0.00%	100.00%
Total School Dist. Emergency Fin. Asst. Fund	\$ 1,000,000	\$ -	\$ 1,000,000	0.00%	100.00%
<u>SBE Federal Department of Agriculture Fund</u>					
Federal Nutrition Programs	\$ 725,000,000	\$ 284,763,069	\$ 440,236,931	39.28%	60.72%
ARRA	914,300	-	914,300	0.00%	100.00%
Total SBE Federal Department of Agriculture Fund	\$ 725,914,300	\$ 284,763,069	\$ 441,151,231	39.23%	60.77%
<u>SBE Federal Agency Services Fund</u>					
Learn and Serve America	\$ 2,500,000	\$ 87,311	\$ 2,412,689	3.49%	96.51%
Total SBE Federal Agency Services Fund	\$ 2,500,000	\$ 87,311	\$ 2,412,689	3.49%	96.51%

ILLINOIS STATE BOARD OF EDUCATION
Awards and Grants Expenditures
July 1, 2011 through January 31, 2012
(Fiscal Year 2012)

	Appropriation Amount	Expenditures to Date	Unexpended Appropriation	Percentage spent YTD	Percentage Unexpended
<u>SBE Federal Department of Education Fund</u>					
Title VI Rural and Low Income Students	\$ 2,000,000	\$ 226,353	\$ 1,773,647	11.32%	88.68%
Race to the Top	45,000,000	-	45,000,000	0.00%	100.00%
Title III - English Language Acquisition	40,000,000	3,699,594	36,300,406	9.25%	90.75%
ONPAR	2,000,000	-	2,000,000	0.00%	100.00%
Enhancing Education Through Technology	20,000,000	44,793	19,955,207	0.22%	99.78%
Charter Schools	9,000,000	488,383	8,511,617	5.43%	94.57%
Advanced Placement Fee	3,000,000	193,614	2,806,386	6.45%	93.55%
Title I - Basic	750,000,000	195,080,004	554,919,996	26.01%	73.99%
Title IV - Safe & Drug Free Schools	15,000,000	22,944	14,977,056	0.15%	99.85%
Title IV - 21st Century/Community Service	60,500,000	8,616,575	51,883,425	14.24%	85.76%
Title II - Teacher Quality	157,000,000	16,107,826	140,892,174	10.26%	89.74%
Title II - Math/Science Partnerships	12,000,000	855,137	11,144,863	7.13%	92.87%
Title X - McKinney Homeless	5,000,000	1,321,429	3,678,571	26.43%	73.57%
Longitudinal Data Systems	4,985,000	-	4,985,000	0.00%	100.00%
IDEA - Preschool	25,000,000	5,772,191	19,227,809	23.09%	76.91%
IDEA - Improvement	3,700,000	635,761	3,064,239	17.18%	82.82%
IDEA	650,000,000	190,424,995	459,575,005	29.30%	70.70%
IDEA - Model Outreach	400,000	-	400,000	0.00%	100.00%
IDEA - Deaf/Blind	450,000	131,515	318,485	29.23%	70.77%
Career and Technical Education - Basic Perkins	55,000,000	11,116,608	43,883,392	20.21%	79.79%
Career and Technical Education - Tech Prep	5,000,000	-	5,000,000	0.00%	100.00%
Special Federal Congressional Initiatives	1,870,500	-	1,870,500	0.00%	100.00%
Striving Readers	49,653,900	24,690	49,629,210	0.05%	99.95%
Title I ARRA	381,125,200	30,218,690	350,906,510	7.93%	92.07%
IDEA ARRA	354,535,900	32,491,733	322,044,167	9.16%	90.84%
IDEA Preschool ARRA	12,818,000	847,429	11,970,571	6.61%	93.39%
Enhancing Education Through Technology-ARRA	17,739,077	1,317,476	16,421,601	7.43%	92.57%
Title X-Homeless Education ARRA	645,400	26,128	619,272	4.05%	95.95%
Total SBE Federal Department of Education Fund	\$ 2,683,422,977	\$ 499,663,867	\$ 2,183,759,110	18.62%	81.38%
<u>Charter Schools Revolving Loan Program Fund</u>					
Charter Schools Revolving Loans	\$ 20,000	\$ -	\$ 20,000	0.00%	100.00%
Total Charter Schools Rev. Loan Program Fund	\$ 20,000	\$ -	\$ 20,000	0.00%	100.00%

ILLINOIS STATE BOARD OF EDUCATION
Awards and Grants Expenditures
July 1, 2011 through January 31, 2012
(Fiscal Year 2012)

	Appropriation Amount	Expenditures to Date	Unexpended Appropriation	Percentage spent YTD	Percentage Unexpended
<u>School Technology Revolving Loan Program Fund</u>					
School Technology Revolving Loans	\$ 5,000,000	\$ 381,300	\$ 4,618,700	7.63%	92.37%
Total School Technology Rev. Loan Program Fund	\$ 5,000,000	\$ 381,300	\$ 4,618,700	7.63%	92.37%
<u>Temporary Relocation Expenses Revolving Grant Fund</u>					
Temporary Relocation Revolving Loans/Grants	\$ 1,400,000	\$ -	\$ 1,400,000	0.00%	100.00%
Total Temporary Relocation Exp. Rev. Grant Fund	\$ 1,400,000	\$ -	\$ 1,400,000	0.00%	100.00%
<u>Capital Development Fund</u>					
Grants for Educational Purposes	\$ 25,000,000	\$ -	\$ 25,000,000	0.00%	100.00%
Total Capital Development Fund	\$ 25,000,000	\$ -	\$ 25,000,000	0.00%	100.00%
<u>School Construction Fund</u>					
Construction Grants	\$ 100,000,000	\$ -	\$ 100,000,000	0.00%	100.00%
Total School Construction Fund	\$ 100,000,000	\$ -	\$ 100,000,000	0.00%	100.00%
<u>Build Illinois Bond Fund</u>					
Construction Grants	\$ 1,459,964	\$ 1,040,345	\$ 419,619	71.26%	28.74%
Total Build Illinois Bond Fund	\$ 1,459,964	\$ 1,040,345	\$ 419,619	71.26%	28.74%
<u>U.S. Dept. of Education Jobs Program Federal Trust Fund</u>					
Awards and Grants	\$ 163,000,000	\$ 79,435,227	\$ 83,564,773	48.73%	51.27%
Total U.S. Dept. of Education Jobs Program Fed. Trust Fund	\$ 163,000,000	\$ 79,435,227	\$ 83,564,773	48.73%	51.27%

ILLINOIS STATE BOARD OF EDUCATION
Awards and Grants Expenditures
July 1, 2011 through January 31, 2012
(Fiscal Year 2012)

	Appropriation Amount	Expenditures to Date	Unexpended Appropriation	Percentage spent YTD	Percentage Unexpended
<i>Personal Property Tax Replacement Fund</i>					
Awards and Grants	\$ 2,135,800	\$ 758,046	\$ 1,377,754	35.49%	64.51%
Grants for Educational Purposes	10,806,400	5,228,375	5,578,025	48.38%	51.62%
Total Personal Property Tax Replacement Fund	\$ 12,942,200	\$ 5,986,421	\$ 6,955,779	46.26%	53.74%
TOTAL AWARDS AND GRANTS - ALL FUNDS	\$ 10,440,446,212	\$ 4,590,800,764	\$ 5,849,645,448	43.97%	56.03%

ILLINOIS STATE BOARD OF EDUCATION
Comparative Statement of Expenditures to Date (January 31)
Fiscal Years 2012 and 2011

	FY12				FY11			
	Appropriation Amount	Expenditures to Date (Direct)	Federal Indirect Cost Recovery Expenditures	Percentage to Date	Appropriation Amount	Expenditures to Date (Direct)	Federal Indirect Cost Recovery Expenditures	Percentage to Date
All Funds								
Personal Services and Related Expenditures	\$ 48,477,067	\$ 21,314,130	\$ 1,532,867	47.13%	\$ 44,991,735	\$ 21,137,052	\$ 1,392,335	46.98%
Contractual Services	29,064,427	5,582,992	354,427	20.43%	30,912,676	7,642,962	595,476	24.72%
Travel	2,274,775	426,747	12,325	19.30%	2,372,973	514,675	10,473	21.69%
Commodities	491,172	42,602	9,872	10.68%	498,545	36,524	13,545	7.33%
Printing	562,700	10,925	-	1.94%	586,500	1,057	-	0.18%
Equipment	934,025	293,706	85,825	40.63%	777,497	104,420	72,597	13.43%
Telecommunications	858,820	200,596	16,020	25.22%	858,103	169,420	23,803	19.74%
Operation of Automotive Equipment	23,800	9,087	-	38.18%	23,800	7,041	-	29.58%
Lump Sums	70,124,166	21,476,747	-	30.63%	43,893,471	15,321,718	-	34.91%
Sub-total	152,810,951	49,357,531	2,011,335	33.62%	124,915,300	44,934,869	2,108,229	35.97%
Awards and Grants	10,363,322,454	4,594,335,151	-	44.33%	11,516,327,141	4,493,606,996	-	39.02%
Construction Grants	101,459,964	1,040,345	-	1.03%	-	-	-	0.00%
Total All Funds	\$ 10,617,593,369	\$ 4,644,733,027	\$ 2,011,335	43.76%	\$ 11,641,242,441	\$ 4,538,541,865	\$ 2,108,229	38.99%
General Revenue Fund								
Personal Services and Related Expenditures	\$ 16,745,700	\$ 9,768,961	\$ -	58.34%	\$ 16,745,700	\$ 9,711,265	\$ -	57.99%
Contractual Services	4,500,000	1,971,366	-	43.81%	6,007,200	3,062,764	-	50.98%
Travel	232,450	49,338	-	21.23%	332,500	119,908	-	36.06%
Commodities	71,300	31,066	-	43.57%	75,000	32,507	-	43.34%
Printing	64,700	265	-	0.41%	88,500	1,057	-	1.19%
Equipment	132,200	43,039	-	32.56%	88,900	41,536	-	46.72%
Telecommunications	383,800	200,596	-	52.27%	375,300	169,420	-	45.14%
Operation of Automotive Equipment	23,800	9,087	-	38.18%	23,800	7,041	-	29.58%
Lump Sums	26,946,301	6,642,259	-	24.65%	812,500	311,075	-	38.29%
Sub-total	49,100,251	18,715,976	-	38.12%	24,549,400	13,456,573	-	54.81%
Awards and Grants	2,562,813,265	1,145,124,662	-	44.68%	2,385,806,700	1,161,828,999	-	48.70%
Total General Revenue Fund	\$ 2,611,913,516	\$ 1,163,840,638	\$ -	44.56%	\$ 2,410,356,100	\$ 1,175,285,572	\$ -	48.76%
Other State Funds								
Personal Services and Related Expenditures	\$ 822,400	\$ 409,889	\$ -	49.84%	\$ 815,400	\$ 136,230	\$ -	16.71%
Lump Sums	21,408,900	2,472,563	-	11.55%	21,408,900	2,660,945	-	12.43%
Sub-total	22,231,300	2,882,452	-	12.97%	22,224,300	2,797,175	-	12.59%
Awards and Grants	4,208,154,189	2,583,247,303	-	61.39%	4,666,054,700	2,533,204,029	-	54.29%
Construction Grants	101,459,964	1,040,345	-	-	110,000,000	-	-	0.00%
Total Other State Funds	\$ 4,331,845,453	\$ 2,587,170,099	\$ -	59.72%	\$ 4,798,279,000	\$ 2,536,001,204	\$ -	52.85%
Federal Funds								
Personal Services and Related Expenditures	\$ 29,376,100	\$ 11,135,281	\$ -	37.91%	\$ 26,038,300	\$ 11,289,557	\$ -	43.36%
Contractual Services	24,210,000	3,611,625	-	14.92%	24,310,000	4,580,198	-	18.84%
Travel	2,030,000	377,409	-	18.59%	2,030,000	394,767	-	19.45%
Commodities	410,000	11,536	-	2.81%	410,000	4,017	-	0.98%
Printing	498,000	10,660	-	2.14%	498,000	-	-	0.00%
Equipment	716,000	250,668	-	35.01%	616,000	62,884	-	10.21%
Telecommunications	459,000	-	-	0.00%	459,000	-	-	0.00%
Lump Sums	23,780,300	14,373,260	-	60.44%	23,780,300	14,457,927	-	60.80%
Sub-total	81,479,400	29,770,438	-	36.54%	78,141,600	30,789,350	-	39.40%
Awards and Grants	3,592,355,000	865,963,186	-	24.11%	4,464,465,741	798,573,968	-	17.89%
Total Federal Funds	\$ 3,673,834,400	\$ 895,733,625	\$ -	24.38%	\$ 4,542,607,341	\$ 829,363,318	\$ -	18.26%

**ILLINOIS STATE BOARD OF EDUCATION
FINANCIAL STATUS REPORT - 07/01/2011 THROUGH 1/31/2012
FY2012**

	<u>Funded Amount</u>	<u>Expended Year to Date</u>	<u>% Spent Year to Date</u>	<u>January Expenditures</u>	<u>Description</u>
Personal Services and Related	52,797.8	23,623.7	44.7%	3,307.0	Salaries & Benefits
Contractual Services	233,243.6	31,102.8	13.3%	6,621.3	Agency Contracts (see below); Non-Employee Travel; Conferences; Registration Fees
Travel	2,513.8	498.3	19.8%	58.1	Staff Travel
Commodities	737.0	53.2	7.2%	13.7	Supplies; Books
Printing	766.0	10.9	1.4%	1.9	Agency Printing
Equipment	1,045.0	426.7	40.8%	21.5	Computers; Printers; Furniture
Telecommunications	998.5	218.9	21.9%	34.6	Telecommunications Expenses
Auto Operations	23.8	9.1	38.2%	1.0	Operation of Agency Autos
Prompt Payment Act	0.5	0.0	0.0%	0.0	Prompt Payment
Refunds	0.0	0.0	0.0%	0.0	Refunds
Temp. Relocation Revolving Fund	1,000.0	0.0	0.0%	0.0	Interfund Cash Transfer
Grants	10,105,986.2	4,510,325.2	44.6%	775,175.0	See Detail Below
School Construction Grants	126,460.0	1,040.3	0.8%	0.0	School Construction Funds

	<u>Funded Amount</u>	<u>Expended Year to Date</u>	<u>% Spent Year to Date</u>	<u>January Expenditures</u>	<u>Description</u>
Agency Contracts Breakdown:					
<u>State Superintendent</u>					
John Perkins					School District Liaison
GRF	48.5	24.0	49.5%	13.4	
Federal	21.5	21.5	100.0%	0.0	
University of Illinois					Provide oversight and coordination for on-going and emerging board priorities, advise Superintendent on agency wide matters and perform other tasks and duties as assigned by the State Superintendent
GRF	142.4	59.3	41.6%	23.7	
<u>Human Resources</u>					
K & L Gates LLP (formerly Bell, Boyd and Lloyd)					Arbitration matters
GRF	75.0	3.0	4.0%	1.1	
Other State	75.0	0.0	0.0%	0.0	
<u>Administrative Services</u>					
Alzina					Building lease in Springfield
GRF	1,353.6	827.0	61.1%	103.4	
Other State	255.7	156.2	61.1%	19.5	
Federal	730.7	446.4	61.1%	55.8	
Xerox Corp					Copier Maintenance Repairs
GRF	92.5	40.0	43.2%	7.0	
Other State	92.5	0.0	0.0%	0.0	

	<u>Funded Amount</u>	<u>Expended Year to Date</u>	<u>% Spent Year to Date</u>	<u>January Expenditures</u>	<u>Description</u>
Facilities Management					Rent for Chicago Office, Thompson Center
GRF	105.2	94.0	89.4%	23.5	
Other State	5.5	1.1	20.0%	0.0	
Federal	180.6	22.4	12.4%	0.0	
<u>General Counsel/Legal</u>					
37 Impartial Hearing Officers					Teacher Dismissal Hearing Officers
GRF	153.4	34.4	22.4%	8.4	
Franczek, Sullivan PC					Attorney General's Office appointed Res Vazquez to continue as Legal Counsel for the ongoing implementation and monitoring of the Corey H. consent decree
GRF	60.0	53.1	88.5%	8.0	
Shefsky & Froelich LTD					Prosecution of Educator misconduct cases and any other cases ISBE may request
GRF	184.0	71.8	39.0%	0.0	
Sandberg, Phoenix & Von Gontard					Serve as "Inspector General" for E. St. Louis School District #189
Other State	100.0	73.8	73.8%	0.0	
<u>Data Systems</u>					
IBM					Development of Statewide Student Information System
GRF	510.0	405.0	79.4%	0.0	
Federal	1,100.0	405.0	36.8%	135.0	
Utilistar					Data analysis and reporting for Supplemental Education Services
Federal	60.0	0.0	0.0%	0.0	
Capitol Strategies					Programmer for Child Nutrition/ ACES - MY07211
Federal	154.4	76.3	49.4%	12.6	
Capitol Strategies					Programmer for Entity System - MY07212
GRF	153.4	72.4	47.2%	12.6	
Capitol Strategies					Two Programmers for Child Nutrition System - MY08212
Federal	318.7	161.1	50.5%	39.3	
Ashbaugh & Associates					Programmer for Teacher Certification Information System and Educator Certification System MY09212
Other State	158.4	75.1	47.4%	6.2	
Hupp Information Technologies					Programmer for support of EDFacts/EDEN
Federal	69.5	23.6	34.0%	4.3	
LEAD IT Corporation					Programmer for Attendance & Cost Allocation System - MY10211 (The company name changed - it was formerly Moon Technology Systems)
GRF	30.3	28.3	93.4%	0.0	
Other State	6.6	0.0	0.0%	0.0	
Federal	23.6	16.4	69.5%	0.0	
IO Datasphere Inc.					Programmer for Attendance and Cost Allocation System - MY10212
GRF	36.7	36.7	100.0%	0.0	
Other State	7.8	7.8	100.0%	1.2	
Federal	28.7	26.4	92.0%	2.3	
Ashbaugh & Associates					Two programmers for the Special Education Data System - MY11214
Federal	296.8	146.5	49.4%	11.8	
Ashbaugh & Associates					Two programmers for Child Nutrition (CNS), Claim Entry System (ACES) and LAN based Child Nutrition System - MY11211
Federal	318.7	134.2	42.1%	11.0	

	<u>Funded Amount</u>	<u>Expended Year to Date</u>	<u>% Spent Year to Date</u>	<u>January Expenditures</u>	<u>Description</u>
LEAD IT Corporation					One programmer for Child Nutrition (CNS), Claim Entry System (ACES) and LAN based Child Nutrition System - MY11212
Federal	123.5	45.4	36.8%	0.0	
Marucco Stoddard, Ferenbach & Walsh (MSF&W)					One lead programmer for Child Nutrition (CNS), Claim Entry System (ACES) and LAN based Child Nutrition System - MY11213
Federal	158.4	68.1	43.0%	9.9	
IBM					Will provide one Skill Level 3 Programmer Analyst for the ILDS application project
Federal	110.0	0.0	0.0%	0.0	
<u>Technology Support</u>					
Dell Marketing LP					CMS master lease agreement - Third year of a five-year installment purchase agreement for a Storage Area Network, server products and components
GRF	132.4	132.4	100.0%	0.0	
Other State	114.0	114.0	100.0%	0.0	
Federal	76.8	76.8	100.0%	0.0	
<u>Career Development & Preparation</u>					
EvalSolutions, Inc.					Evaluation and Research of Illinois Math & Science Partnerships Program
Federal	90.1	42.3	46.9%	42.3	
Sangamon County ROE					Staff support for Illinois Mathematics and Science Partnership Program and Enhancing Education Through Technology as well as other statewide initiatives
Federal	143.0	71.5	50.0%	11.9	
<u>Early Childhood</u>					
Hupp Information Technologies					Programmer for Early Childhood Block Grant Program
GRF	80.0	32.3	40.4%	4.5	
National Louis University					Third party monitoring of Early Childhood Block Grant Programs
GRF	853.8	526.9	61.7%	163.4	
Erikson Institute					Early Childhood Evaluation
GRF	400.0	300.0	75.0%	0.0	
IL Department of Human Services					Gateways to Opportunities Scholarship Program for Early Childhood
GRF	500.0	500.0	100.0%	0.0	
<u>English Language Learning</u>					
Illinois Migrant Council					Support & technical assistance to the Migrant Education Program
Federal	409.2	269.5	65.9%	36.9	
University of Wisconsin					Will create academic Spanish language development standards for grades PreK-12 and develop technology mediated assessments for grades PreK-12
Federal	1,818.8	0.0	0.0%	0.0	
Illinois Resource Center					Statewide professional development
GRF	868.4	0.0	0.0%	0.0	
Federal	125.0	0.0	0.0%	0.0	
<u>Special Education Services</u>					
11 Hearing Officers					Impartial Hearing Officers in the local-level - Section 14-8.02 of the School Code
Federal	321.9	222.4	69.1%	45.4	
9 Mediation Officers					Special Education mediation services
Federal	90.0	48.6	54.0%	5.1	

	<u>Funded Amount</u>	<u>Expended Year to Date</u>	<u>% Spent Year to Date</u>	<u>January Expenditures</u>	<u>Description</u>
Joyce Eckrem Federal	135.0	62.5	46.3%	10.4	Training and on-going staff development for Due Process Hearing Officers
ROE # 20 Federal	248.6	248.6	100.0%	0.0	Harrisburg Project - Manage software for special education districts and co-ops
Gail Imobersteg Federal	50.0	25.0	50.0%	8.3	Evaluation of Special Education Impartial Hearing Officers
Loyola University GRF	61.8	25.8	41.7%	5.2	Assist in implementation of evaluation of special education programs
Alert IT Services Federal	19.8	18.6	93.9%	0.0	ARRA - Job S020 - Special Education Maintenance of Effort
Measurement Incorporated Federal	65.0	0.0	0.0%	0.0	Special Education parent survey
Capitol Strategies Consulting Federal	139.5	31.9	22.9%	16.4	Maintain Special Education Database System
Illinois State University Federal	131.2	0.0	0.0%	0.0	Evaluation services for the 5 year State Personnel Development Grant
IL Caucus for Adolescent Health Federal	60.0	30.0	50.0%	30.0	HIV Prevention Education Training
Peoria County ROE Federal	250.0	250.0	100.0%	0.0	Administer, plan and implement the IL Virtual School (IVS) Program
	1,200.0	600.0	50.0%	0.0	
The Center: Resources for Teaching Federal	175.0	17.5	10.0%	0.0	Technical assistance with the McKinney-Vento Homeless Education Program
EvalSolutions, Inc. Federal	45.9	45.9	100.0%	0.0	External evaluator for the Enhancing Education Through Technology (EETT) program
Maywood-Melrose PK Broadview 89 Other State	290.2	290.2	100.0%	0.0	Children's Low-cost laptop program
ROE # 20 Federal	478.3	119.6	25.0%	59.8	Harrisburg Project - Manage software for special education districts and co-ops
Chicago District 299 Other State	200.0	200.0	100.0%	0.0	Children's Low-cost laptop program
Ottawa ESD 141 Other State	180.5	180.5	100.0%	0.0	Children's Low-cost laptop program
Elmwood CUSD Other State	91.3	91.3	100.0%	0.0	School Technology Revolving Loan Agreement
Lexington CUSD 7 Other State	75.0	75.0	100.0%	0.0	School Technology Revolving Loan Agreement
Community Unit District No. 16 Other State	110.1	110.1	100.0%	0.0	School Technology Revolving Loan Agreement
Wolf Branch SD 110 Other State	105.0	105.0	100.0%	0.0	School Technology Revolving Loan Agreement
Prairie-Hills Elem SD Other State	66.0	66.0	100.0%	0.0	Children's Low-cost laptop program
Community Unit School District 300	221.7	0.0	0.0%	0.0	School Technology Revolving Loan Agreement

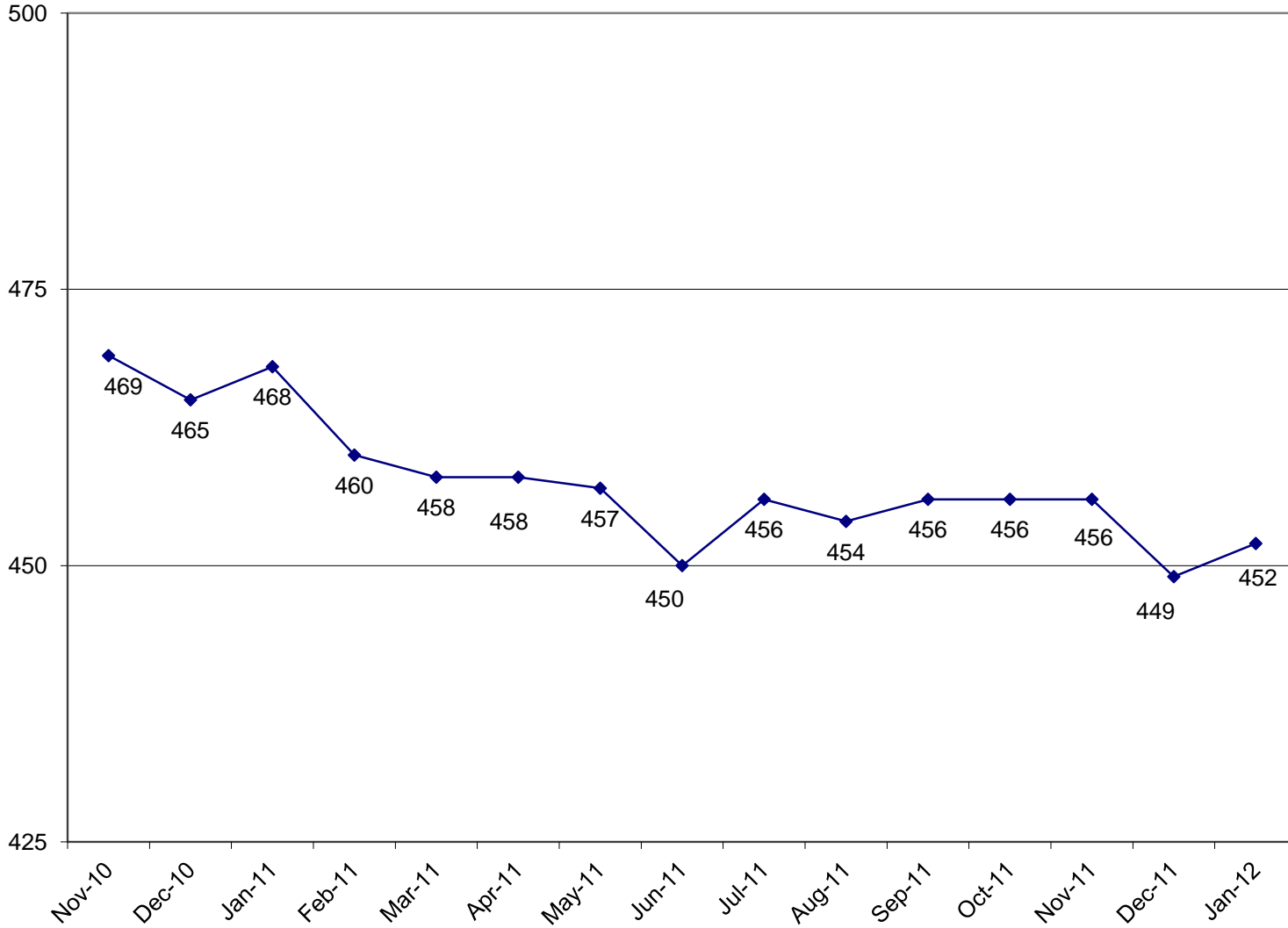
	<u>Funded Amount</u>	<u>Expended Year to Date</u>	<u>% Spent Year to Date</u>	<u>January Expenditures</u>	<u>Description</u>
<u>Innovation and Improvement</u>					
Northern Illinois University Federal	121.6	45.1	37.1%	13.8	Comprehensive external evaluation of the 21st Century Program
Northern Illinois University GRF	520.8	489.8	94.0%	0.0	A "live data" website for an Illinois Interactive Report Card
Federal	458.7	0.0	0.0%	0.0	
Learning Point Associates Federal	496.6	248.3	50.0%	82.8	Statewide technical assistance and monitoring for the 21st Century Program
Academic Development, Inc. Federal	100.7	50.4	50.0%	25.2	Technical assistance to schools/districts in developing evaluations for the content and effectiveness of the parental involvement policy activities and programs for improving the academic quality of schools through the spread of internet technology
Sangamon County ROE Federal	250.0	50.0	20.0%	8.3	Provide services in the review, amendment and approval process of NCLB applications and ARRA Title I applications
University of Memphis Federal	141.4	64.5	45.6%	0.0	Evaluation of the effectiveness of providers for Supplemental Education Services
Illinois State University GRF	140.0	0.0	0.0%	0.0	Technical assistance and technical support services for the Gates Foundation to align IL Learning Standards and Assessments with college work readiness standards
IL Dept of Human Services Federal	50.0	0.0	0.0%	0.0	Will oversee the work for Illinois Student Assistance Comm. and provide training to the ROEs
Madison County ROE 41 Federal	424.6	251.9	59.3%	0.0	Coordinate the Building State Capacity Grant
Madison County ROE 41 Federal	53.8	53.8	100.0%	0.0	LTC 5 hosts the Illinois Data Portal for use throughout all Regional Technical Centers and for all Illinois schools as well as coordinating the WW II Veterans Video Project. This IGA is to provide updated surveys and assessments for the Illinois Data Portal
Illinois Mathematics & Science Academy Federal	150.0	75.0	50.0%	75.0	The Illinois Math and Science Academy will work with up to 40 DCEO-selected Illinois high schools/after school programs.
<u>Student Assessment</u>					
NCS Pearson (Harcourt) GRF	3,000.0	491.9	16.4%	0.0	Development of the Illinois Standards Achievement Test- MY05647
Federal	3,011.5	2,951.1	98.0%	491.9	
University of Illinois GRF	250.0	125.0	50.0%	62.5	Evaluation of the large scale assessment and accountability system
NCS Pearson, Inc. Federal	2,481.1	1,447.4	58.3%	206.8	IAA Test Development (MY066410)
Wisconsin University - WIDA Consortium GRF	4,661.1	3,165.3	67.9%	2,260.9	Title III Requirements for the ACCESS test (English Language Learning). Validated through comparative studies
Federal	575.6	0.0	0.0%	0.0	
NCS Pearson, Inc. GRF	7,093.2	1,903.8	26.8%	1,037.9	Administration of the IL Standards Achievement Test MY07645
Federal	6,457.8	6,457.8	100.0%	0.0	

	<u>Funded Amount</u>	<u>Expended Year to Date</u>	<u>% Spent Year to Date</u>	<u>January Expenditures</u>	<u>Description</u>
American College Testing					Administration of the Prairie State Achievement Exam (PSAE)
GRF	8,475.0	0.0	0.0%	0.0	
Federal	4,942.0	3,388.6	68.6%	677.7	
Harte-Hanks					Will provide evaluation and review of vendor services to ensure the quality and accuracy of all Illinois' assessments
Federal	184.0	45.3	24.6%	45.3	
<u>Educator and School Development</u>					
8 Hearing Officers					Certification Revocation Hearing Officers
Other State	226.4	3.2	1.4%	0.3	
Illinois State University					Coordinate work to support of the National Board of Professional Teaching Standards to serve schools
Federal	406.9	13.1	3.2%	0.0	
University of Illinois					Facilitate with ISBE and New Illinois Teacher Collaborative a pilot for the Induction and Mentoring Program
Other State	288.0	0.0	0.0%	0.0	
<u>Standards and Assessments</u>					
Ashbaugh & Associates, Inc.					Provide programmer for the Illinois Longitudinal Data System
Federal	205.5	111.8	54.4%	32.6	
IL Board of Higher Education					Integrate infrastructure and data systems of IBHE and ISBE for IL Longitudinal Data System
Federal	152.0	62.3	41.0%	17.1	
Public Consulting Group					IL Longitudinal Data System Data Architecture
Federal	1,322.2	270.0	20.4%	90.0	
IL Board of Higher Education					IL Longitudinal Data System Status Reports
Federal	333.9	0.0	0.0%	0.0	
Hupp Information Technologies					Redesign of the TCIS TSR Systems
Federal	1,698.9	507.1	29.8%	304.3	
MSF&W					Co-project manager for the Illinois Longitudinal Data System (ILDS)
Federal	177.3	89.2	50.3%	32.9	
Public Consulting Group					Provide services in the integration of all ISBE student-level data collection systems and connecting student-level data
Federal	200.0	0.0	0.0%	0.0	
Illinois Community College Board					Funding for ICCB to perform certain services related to the State Longitudinal Data System ARRA Grant
Federal	392.5	27.0	6.9%	3.2	
Illinois Student Assistance Commission					ISAC will perform certain services related to SLDS ARRA Grant
Federal	806.2	297.7	36.9%	112.0	
<u>Fiscal and Procurement</u>					
Workforce Services (Jill Bishop)					Translation of documents from English to other languages
Federal	67.2	4.5	6.7%	0.8	
<u>Funding & Disbursements</u>					
MTW Solutions, LLC					Technical Support for e-Grants System
GRF	5.0	0.0	0.0%	0.0	
Federal	55.0	6.0	10.9%	0.0	

	<u>Funded Amount</u>	<u>Expended Year to Date</u>	<u>% Spent Year to Date</u>	<u>January Expenditures</u>	<u>Description</u>
<u>Nutrition Programs</u>					
Southern Illinois University					Evaluation and reviews for School Meals Initiative (SMI)
Federal	250.0	50.8	20.3%	0.0	
Legal Resolve, Inc.					Administrative Hearing Officer for Child Care Food Program
Federal	150.0	0.0	0.0%	0.0	
Department of Public Health					Conduct the summer food sanitation inspections
Federal	135.0	67.0	49.6%	0.0	
<u>External Assurance</u>					
BKD LLP					ARRA/General State Aid Audit
GRF	408.0	84.1	20.6%	18.7	
Crowe Horwath LLP					ARRA/General State Aid Audit
GRF	328.0	40.1	12.2%	40.1	
Grants Breakdown:					
General State Aid	4,448,104.5	2,564,764.9	57.7%	449,222.0	Formula
Title I - Low Income	750,000.0	195,080.0	26.0%	96,669.2	Formula
Child Nutrition	725,000.0	284,763.1	39.3%	51,335.6	Formula - Reimbursement
IDEA	650,000.0	190,425.0	29.3%	65,954.7	Formula
Spec Ed Personnel	465,700.0	269,546.4	57.9%	2,116.5	Formula
Transportation Spec Ed	436,800.0	148,116.8	33.9%	0.0	Formula
Title I - Low Income - ARRA	381,125.2	30,218.7	7.9%	2,599.0	Formula - Federal Stimulus
IDEA - Flow Through ARRA	354,535.9	32,491.7	9.2%	0.0	Formula - Federal Stimulus
Spec Ed Extraordinary	343,375.7	158,892.2	46.3%	37,337.2	Mandated Categorical-Supplemental
Early Childhood Block	320,573.7	172,883.0	53.9%	31,611.0	Block grant for Pre-K, parent training and prevention initiative
Transportation Reg/Voc	205,808.9	106,930.9	52.0%	0.0	Formula
Spec Ed Private Facility Tuition	177,743.7	131,885.8	74.2%	0.0	Formula
Title II - Teacher Quality	157,000.0	16,107.8	10.3%	8,243.0	Formula
Spec Ed Orphanage	101,700.0	57,903.1	56.9%	0.0	Formula
Bilingual Education	62,497.8	12,723.0	20.4%	8,526.0	Mandated Categorical
Title IV - 21st Century	60,500.0	8,616.6	14.2%	3,202.4	Competitive
Voc Ed - Federal	55,000.0	11,116.6	20.2%	3,240.1	Formula and Competitive - to improve student academic and career skills
Striving Readers	49,653.9	24.7	0.0%	18.0	Grants
Title III - English Language Acq	40,000.0	3,699.6	9.2%	955.3	Grant
Vocational Education - State	38,562.1	26,804.6	69.5%	3,636.5	Formula
State Free Lunch and Breakfast	26,300.0	18,575.5	70.6%	911.1	Mandated Categorical - Reimbursement
IDEA Preschool	25,000.0	5,772.2	23.1%	2,134.4	Formula - special education, 3-5 year-olds
Driver Education	24,229.6	12,114.8	50.0%	0.0	Reimbursement
Technology Literacy	20,000.0	44.8	0.2%	30.5	Competitive and non-competitive grants to school districts
Technology Literacy - ARRA	17,739.1	1,317.5	7.4%	0.0	Competitive - federal Stimulus
Title IV - Safe and Drug Free	15,000.0	22.9	0.2%	0.0	Formula
Truant/Dropout/Optional Education	14,059.0	9,142.9	65.0%	2,575.4	Competitive - at-risk students/dropout prevention
Orphanage Tuition	13,000.0	4,500.1	34.6%	0.0	Reimbursement to school districts for children residing in orphanages
Preschool - Spec Ed - ARRA	12,818.0	847.4	6.6%	0.0	Formula - Federal Stimulus
Title II Math/Science Partnerships	12,000.0	855.1	7.1%	180.1	Formula
Spec Ed Summer School	11,200.0	10,750.0	96.0%	0.0	Formula - Special ed students enrolled in summer sessions

	<u>Funded Amount</u>	<u>Expended Year to Date</u>	<u>% Spent Year to Date</u>	<u>January Expenditures</u>	<u>Description</u>
ROE Salaries	10,806.4	5,228.4	48.4%	1,121.4	Salaries for ROE's
Alternative Ed/Reg Safe Schools	9,341.9	4,457.9	47.7%	853.8	Formula
Charter Schools - Federal	9,000.0	488.4	5.4%	0.0	Competitive
McKinney Homeless Ed	5,000.0	1,321.4	26.4%	923.7	Competitive grants to school districts
Voc Ed - Federal Tech Prep	5,000.0	0.0	0.0%	0.0	Grants - assists students in achieving learning/occupational skills standards
School Tech. Rev. Loan	5,000.0	381.3	7.6%	0.0	Loans to schools to implement technology
Longitudinal Data System - DOE	4,985.0	0.0	0.0%	0.0	Grants
IDEA Improvement Part D	3,700.0	635.8	17.2%	230.9	Reimbursement
Philip Rock Center	3,577.8	2,200.0	61.5%	300.0	Targeted Initiative
Advanced Placement Fee	3,000.0	193.6	6.5%	0.0	Fee reimbursement for Adv Placement Exam and Int'l Baccalaureate exam
After School Matters	2,500.0	0.0	0.0%	0.0	Grant to After School Matters
Learn & Serve America	2,500.0	87.3	3.5%	1.6	Competitive grants
ROE - School Services	2,135.8	758.0	35.5%	227.5	Formula - ROE Operations
Title VI-Flex. & Acct Rural Education	2,000.0	226.4	11.3%	131.3	Grants to school districts
ONPAR	2,000.0	0.0	0.0%	0.0	Grant
Congressional Earmarks	1,870.5	0.0	0.0%	0.0	Grants
Technology for Success -State	1,800.0	1,069.8	59.4%	186.2	Grants
Agriculture Education	1,800.0	1,159.1	64.4%	57.8	Grants to school districts
Reorg Incentive Feasibility Study	1,800.0	1,593.0	88.5%	0.0	Grants
Children's Mental Health Partner	1,458.0	796.2	54.6%	77.2	Grants
Mat'ls for the Visually Impaired	1,421.1	875.0	61.6%	100.0	Targeted Init. - with The Chicago Lighthouse for People who are Blind or Visually Impaired
Temporary Relocation	1,400.0	0.0	0.0%	0.0	Formula grants for school emergency relocation
Teach America	1,225.0	389.5	31.8%	198.4	Grant to Teach for America-Chicago
Nat'l Board Certification	1,000.0	0.0	0.0%	0.0	Grants
Arts & Foreign Language	1,000.0	204.0	20.4%	43.5	Grants
Emergency Financial Assistance	1,000.0	0.0	0.0%	0.0	Formula and loans to school districts
Lowest Performing Schools	998.8	0.0	0.0%	0.0	Grants to lowest performing schools
Child Nutrition - ARRA	914.3	0.0	0.0%	0.0	Formula - Federal Stimulus
Recording - Blind and Dyslexic	816.6	816.6	100.0%	216.6	Grant to increase achievement of students with visual impairments
Homeless Education - ARRA	645.4	26.1	4.0%	0.0	Formula - Federal Stimulus
Deaf/Blind	450.0	131.5	29.2%	0.0	Grant to Philip J. Rock Center
IDEA Model Outreach	400.0	0.0	0.0%	0.0	Competitive
Tax Equivalent Grants	222.6	222.6	100.0%	0.0	Grants
Autism Training & Tech Assist.	100.0	55.6	55.6%	11.1	Grants to the IL Autism Training & Tech Assistance Program
ROE Bus Driver Training	70.0	70.0	100.0%	0.0	ROE Bus Driver Training
Charter Schools-Rev Loan Fund	20.0	0.0	0.0%	0.0	Other/Repayment of loans
Standards Assessment & Acct	1.0	0.0	0.0%	0.0	Grants for K-6 Arts, Learn Improve, Learning Standards, Student/Teacher Assessment
Teachers/Admin. Mentoring	1.0	0.0	0.0%	0.0	Grants
Advanced Placement Classes/State	1.0	0.0	0.0%	0.0	Grants

ILLINOIS STATE BOARD OF EDUCATION
HEADCOUNT AS OF JANUARY
2012



**ILLINOIS STATE BOARD OF EDUCATION
AGENCY STAFF DETAIL AS OF JANUARY 2012**

	Mgmt.	Prof.	Support	GRF	Non-GRF	Total
SUPERINTENDENT'S OFFICE						
State Superintendent	1	0	2	3	0	3
Board Services	0	1	1	2	0	2
General Counsel	2	11	1	13	1	14
Governmental Relations	0	2	0	2	0	2
Internal Audit	1	4	1	2	4	6
External Assurance	<u>2</u>	<u>16</u>	<u>2</u>	<u>4</u>	<u>16</u>	<u>20</u>
Sub-Total	6	34	7	26	21	47
HUMAN RESOURCES						
Human Resources	<u>3</u>	<u>5</u>	<u>7</u>	<u>12</u>	<u>3</u>	<u>15</u>
Sub-Total	3	5	7	12	3	15
PUBLIC INFORMATION						
Public Information	<u>1</u>	<u>6</u>	<u>1</u>	<u>7</u>	<u>1</u>	<u>8</u>
Sub-Total	1	6	1	7	1	8
SPECIAL EDUCATION SERVICES						
Special Education Admin.	1	0	1	0	2	2
Special Education Services - Spfld.	2	38	7	5	42	47
Special Education Services - Chgo.	<u>1</u>	<u>17</u>	<u>2</u>	<u>0</u>	<u>20</u>	<u>20</u>
Sub-Total	4	55	10	5	64	69
LANGUAGE & EARLY CHILDHOOD DEVELOPMENT						
Center Administration	1	0	0	1	0	1
Early Childhood	1	6	2	4	5	9
English Language Learning	<u>1</u>	<u>6</u>	<u>1</u>	<u>2</u>	<u>6</u>	<u>8</u>
Sub-Total	3	12	3	7	11	18
EDUCATIONAL PROGRAMS						
Career & Technical Education	1	9	3	8	5	13
Innovation and Improvement	<u>3</u>	<u>19</u>	<u>4</u>	<u>0</u>	<u>26</u>	<u>26</u>
Sub-Total	4	28	7	8	31	39

	Mgmt.	Prof.	Support	GRF	Non-GRF	Total
STANDARDS & ASSESSMENTS						
Standards & Assessment Admin.	1	2	1	1	3	4
Data Analysis & Progress Reporting	1	5	1	5	2	7
Assessment	<u>2</u>	<u>12</u>	<u>2</u>	<u>4</u>	<u>12</u>	<u>16</u>
	4	19	4	10	17	27
SCHOOL SUPPORT SERVICES FOR ALL SCHOOLS						
School Support Admin	1	0	1	2	0	2
Educator Certification	1	11	13	19	6	25
Educator & School Development	2	8	4	13	1	14
Nutrition Programs	<u>2</u>	<u>38</u>	<u>3</u>	<u>4</u>	<u>39</u>	<u>43</u>
	6	57	21	38	46	84
FISCAL SUPPORT SERVICES						
Fiscal Support Services Admin.	1	0	0	1	0	1
Budget & Financial Management	1	5	1	5	2	7
Data Systems	3	29	2	17	17	34
Technology Support	1	19	2	14	8	22
Fiscal & Procurement	2	10	3	9	6	15
Administrative Services	1	3	13	13	4	17
Funding and Disbursements	2	21	8	13	18	31
School Business Services	<u>2</u>	<u>13</u>	<u>3</u>	<u>16</u>	<u>2</u>	<u>18</u>
Sub-Total	13	100	32	88	57	145
GRAND TOTAL, ALL CENTERS	44	316	92	201	251	452
	10%	70%	20%	44%	56%	100%

ILLINOIS STATE BOARD OF EDUCATION
Personnel Transactions As of January 2012

Transaction Data:

	<u>FY03</u>	<u>FY04</u>	<u>FY05</u>	<u>FY06</u>	<u>FY07</u>	<u>FY08</u>	<u>FY09</u>	<u>FY10</u>	<u>FY11</u>	<u>FY12</u>
Begin Year	650	522	471	487	478	463	475	473	480	450
Hire Externally	29	20	77	37	44	54	30	51	23	29
Recall	11	19	4	4	0	1	1	0	1	0
Retire	-128	-34	-30	-25	-20	-19	-15	-25	-25	-16
Resign	-13	-24	-31	-17	-33	-19	-12	-12	-25	-7
Discharge	-2	-2	-4	-7	-5	-4	-5	-7	-3	-3
Layoff	-22	-30	0	0	0	0	0	0	-1	0
Death	-3	0	0	-1	-1	0	0	0	0	-1
Other	<u>0</u>	<u>0</u>	<u>0</u>	<u>0</u>	<u>0</u>	<u>-1</u>	<u>-1</u>	<u>0</u>	<u>0</u>	<u>0</u>
End Year	522	471	487	478	463	475	473	480	450	452