



Transitioning to 2020-21 School Year: Plan Overview

June 17, 2020

Equity • Quality • Collaboration • Community



Restore Illinois Plan

- Schools and districts are encouraged to transition to in-person instruction as regions transition to Phase 4. The following IDPH requirements must be met:
 - Require use of appropriate personal protective equipment (PPE), including face coverings;
 - Prohibit more than 50 individuals from gathering in one space;
 - Require social distancing;
 - Conduct symptom screenings and temperature checks or require self-certification that individuals entering school buildings are symptom free; and,
 - Increase schoolwide cleaning and disinfection.

Equity • Quality • Collaboration • Community



Transition Advisory Work Group

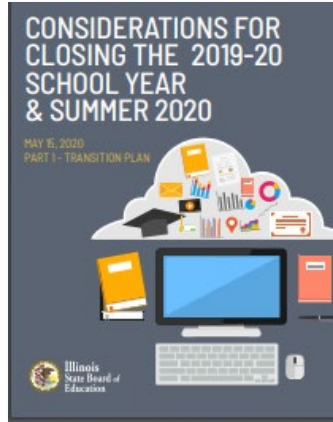
- 56 Total Members
 - Educators
 - Administrators
 - Transportation professionals
 - School nurses
 - Social workers
 - Agency staff
 - Governor's Office



Equity • Quality • Collaboration • Community



Transition Guidance



- **Part 1 – Considerations for Closing the 2019-20 School Year and Summer 2020** - Released May 15

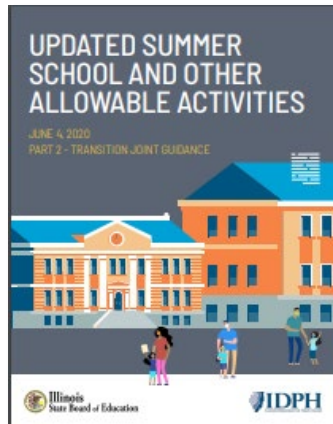
- Focuses on closing out the 2019-20 SY in Phase 2 and preparations that can be made for instruction in the fall.

- **Part 2 – Updated Summer School and Other Allowable Activities** - Released June 4

- Focuses activities allowed in Phase 3 and by Executive Order 2020-40, including summer school, and provides health and safety guidelines for schools. ISBE highlighted to schools that most of the health and safety protocols would carry over into Phase 4 with capacity limits raising from 10 to 50.

- **Part 3 – Starting the 2020-21 School Year** - Coming soon

- Focuses on scheduling, instruction, and expanded health and safety guidelines for schools.



Equity • Quality • Collaboration • Community



Teaching & Learning Guidance

- Remote Learning Recommendations

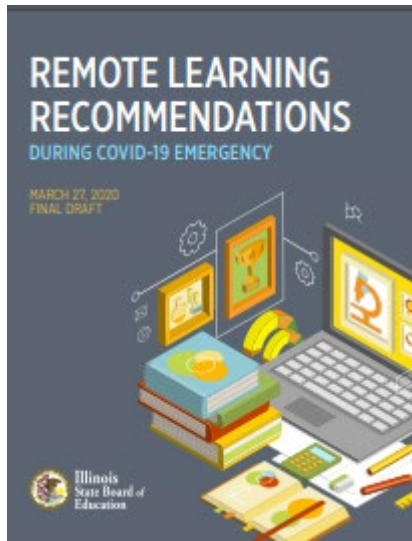
- *Released March 27*

- Recommendations to assist schools and districts in the sudden transition to remote learning.

- Learning Recommendations for Fall

- *Coming soon*

- ISBE has assembled a group of educators to review and revise these recommendations as schools prepare to return to school in the fall.



Equity • Quality • Collaboration • Community



Part 3 Preliminary Transition Guidance

- Planning
 - Full In-Person Learning
 - Remote or Blended Remote Learning Days
- Instructional Recommendations
 - Assessing and Addressing Learning Loss & SEL
 - Professional Development
- Enhanced Health and Safety Guidelines
 - Capacity Limit Raised from 10 to 50 and with Additional Areas and Activities



Part 3 Preliminary Transition Guidance

District Planning

- Create inclusive Planning Teams
- Ground plans in equity: prioritize in-person learning for higher need students
- Survey families and educators and review student attendance and engagement data
- Prepare for when students and staff are ill
- Communication with staff and families



Part 3 Preliminary Transition Guidance

Instructional Recommendations

- Assess and address skill levels (learning loss) and social-emotional needs
- Consider grade band transitions and vertical grade level articulation
- Provides recommendations for instructional practices to maintain social distance, especially for our youngest learners
- Return to traditional grading policies and make modifications as necessary
- Support educators through teacher mentoring, professional learning, and teacher leaders, including trauma-informed practices



Part 3 Preliminary Transition Guidance

Enhanced Health and Safety Protocols

- Developed in partnership with Illinois Department of Public Health in alignment with CDC
 - Hand Hygiene
 - Face Coverings and other Personal Protective Equipment
 - Social Distancing
 - Symptom Screenings which may include self-certification
 - Cleaning
 - Capacity Limits
 - Additional area- and activity-specific recommendations

Equity • Quality • Collaboration • Community



ISBE Next Steps



Equity • Quality • Collaboration • Community