



Illinois State Board of Education

Multilingual Department

February 3, 2020

ANNOUNCEMENTS

WELCOME OUR NEW DIRECTOR

ISBE would like to welcome our Multilingual Department Director, Joanne Clyde to the team. Joanne Clyde is excited to join ISBE and to devotedly support all stakeholders to ensure the success of the thousands of students we serve across Illinois.

GRANTS

FY20 IMMIGRANT EDUCATION PROGRAM ELIGIBILITY

The Multilingual Department has posted the districts that are eligible for the Immigrant Education Program for FY20 [here](#). Districts that indicated their interest in applying for the Immigrant Education Grant in the *FY20 Intent to Apply*, submitted applications and are eligible, will find the Immigrant Education Program funding allocations loaded on their *FY20 ELL-TBE/TPI and Title III* application.

Please note that due to a federal cut-back in our state Title III appropriation in FY20, ISBE had to adjust the district eligibility cut-off for the Immigrant Education Program. As a result, only districts with the highest rate of increase in the number of immigrant students are eligible for the grant this year. Any district that has carryover funds from the previous year and/or received Immigrant Education funds for the current year should amend the *FY20 ELL-TBE/TPI and Title III* application to include Immigrant Education funds.

MIGRANT EDUCATION PROGRAM

The FY20 Title I Migrant – Summer Term and the FY20 Migrant Incentive Grant applications are now available on eGMS through IWAS. These grant applications are open to entities that completed a successful competitive bid in FY18. The next competitive bidding cycle will be for the summer of FY21.

The Migrant Education Program provides supplemental educational services to eligible children who have moved with a parent or spouse who is a migratory farm worker within the past 36 months. The program also serves youth who move on their own as migratory farm workers. A trained recruiter determines eligibility by interviewing the family. If you would like assistance in identifying children of migratory farm workers in your district, please contact Maria Dominguez, State Migrant Identification and Recruitment Coordinator at mdominguez3@niu.edu or (309) 385-1901, or visit the [Illinois Migrant Education Program website](#).

FY 2021 INTENT TO APPLY

The FY 2021 EL – Title III Intent to Apply, which is the first phase of the application for Title III funding, is now open on eGMS. To complete the application for Title III funding, districts must also submit the Consolidated District Plan (CDP) and the ELL- Title III Application. For more information, [click here](#).

ISBE-Sponsored Workshops

FREE UPCOMING FY20 WIDA WORKSHOPS AND WEBINARS

For more information and registration, click [here](#).

In-Person Workshops

TOPIC	DATE	LOCATION
Writing with Multilingual Learners in the Elementary Grades	April 1- April 2	Glenview SD 1401 Greenwood Rd. Glenview, IL 60026

IRC-ISBE FREE PROFESSIONAL LEARNING!

The Illinois Resource Center (IRC) offers these free professional learning opportunities to Illinois educators with support from the Illinois State Board of Education the catalog of 2019-2020 IRC-ISBE Free Professional Learning Opportunities is [here](#)! As you plan for the coming school year, make sure to consider these dates.

WIDA Early Years

ISBE and The Center: Early Childhood Professional Learning are excited to announce that the partnership between WIDA and Illinois now includes preschool. As a result, Illinois educators have access to the WIDA Early Years online learning modules. For more information, including how to access to the modules, click [here](#).

EQUITABLE ACCESS TO EDUCATIONAL EXCELLENCE: FRAMING SERVICES FOR ENGLISH LEARNERS IN ILLINOIS

The Multilingual Department in conjunction with the Illinois Resource Center has developed a Technical Assistance (TA) website based on the six elements from *Equitable Access to Educational Excellence: Framing Services for English Learners in Illinois*. The TA website contains resources within each of these six areas and can be found [here](#).

Screening and Testing

ACCESS

NEW! Online ACCESS for ELLs Grades 4-12 Writing Test

It is imperative that students **who will handwrite** their Writing response instead of using a keyboard are placed into a Handwriting Response (HW) test session in WIDA AMS. Before beginning any Grades 4-12 Online ACCESS Writing test sessions, please verify that students are assigned to the test session in WIDA AMS that aligns with their response mode.

Please refer to pages 108-109 in the [WIDA AMS User Guide](#) for specific instructions on moving students to a HW test session.

This year, the Online Grades 4-12 Writing Test has embedded field test items. This means that the third writing task may be different for some students. If a student has been assigned the incorrect test session in WIDA AMS, they may see a different field test item online than the handwriting booklet. Should this occur after the test session is already in progress and the student has begun responding to tasks, the student should

still complete testing and the district should submit the Handwriting Response booklet for scoring as usual. The third task, or field test item, will not contribute to the student's overall score.

The Test Setup Window for ACCESS for ELLs and Alternate ACCESS for ELLs takes place **Tuesday, December 3, 2019** through **Tuesday, March 3, 2020**. During this window, you will have the ability to view students and modify test sessions in [WIDA AMS](#). If you are administering ACCESS for ELLs online, you must make sure your students are entered in the appropriate test sessions.

Students for whom Pre-ID data was submitted will automatically be placed into generic test sessions based on grade cluster and domain. To view the test sessions, log into WIDA AMS, click on **Test Management** and then click on **Manage Test Sessions**. This view can be filtered by a specific district or school and displays the status of the test session: Not Started, In Progress, or Completed.

For detailed instructions on Test Setup, please refer to the *WIDA AMS Guide and Videos* section of the [WIDA Secure Portal](#). You can find this by selecting **ACCESS for ELLs Training Courses > Online Grades 1-12**. You may also refer to the *WIDA Assessment Management System (WIDA AMS) User Guide* located in WIDA AMS under **All Applications > General Information > Documents** for more information on Test Setup.

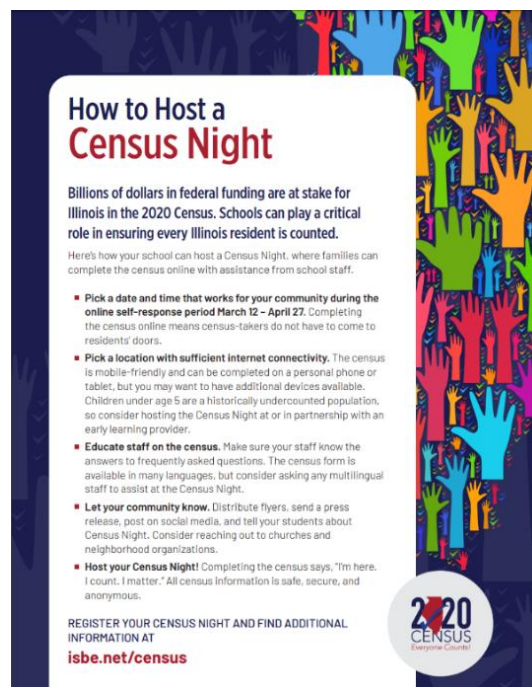
NEW! School districts who wish to administer the ACCESS for ELLs on paper in school year 2020 must submit a waiver request. This form is not required for paper test administrations for Kindergarten, to provide accommodations that require a paper mode administration to student with IEPs, to allow handwriting on paper for the Writing domain, or to administer the Alternate ACCESS. You may submit the [ACCESS Waiver Application for Paper Mode Testing here](#).

OTHER OPPORTUNITIES AND RESOURCES

Billions of Dollars Are at Stake for Illinois in the 2020 Census

Educators are trusted voices in communities and play a critical role in ensuring every Illinoisan is counted. Federal funding determined by the 2020 Census will support Head Start programs, nutrition services, Medicaid, and other services for children and families. Missing one child means missing out on federal funding for that child for the next 10 years!

ISBE is encouraging schools and districts to host Census Nights where families and community members can gather in a safe and trusted space to fill out the census online. To register your census night and for more information (including Census EDU Summit presentations), [click here](#).



49th Annual National Association for Bilingual Education (NABE) Conference

Pre-Conference: February 25, 2020

Conference: February 26-28, 2020

Tropicana Las Vegas • Las Vegas, NV

[More Information](#)

TESOL 2020

Conference: March 31- April 3, 2020

Denver, Colorado

[More Information](#)

Fifteenth Annual Statewide Summit for Bilingual Parents

Conference: May 9, 2020

Hilton Chicago/ Oak Brook Hills Resort and Conference Center

3500 Midwest Road, Oak Brook, Illinois 60523

[More Information & Registration Coming Soon!](#)