

# **Illinois State Board of Education**

## **Illinois Longitudinal Data System Data Advisory Committee**

**October 9, 2012**

# ILDS Data Advisory Committee

---

## Agenda

**Welcome and Introductions**

**Project Status**

**ISBE Reorganization**

**Teacher of Record**

**Data Governance**

**Wrap Up**

## **ILDS Status**

---

- **\$8.9M Grant, 5 primary outcomes**
  
- 1. Data Advisory Committee**
  - **Meetings scheduled quarterly or as needed**
- 2. Enterprise-wide Data Architecture**
  - **Completed, architecture provides guidance for building of data warehouse**
  - **Purchased metadata management tool – will assist in making the information publicly accessible**
- 3. Data Stewardship**
  - **Analysis and data quality improvement activities ongoing**
  - **Data stewards are providing additional metadata updates as needed**
  - **Contractual resources added to supplement activities, focusing on reducing data collection burden at the district level**

## ILDS Status (cont)

---

### 4. Education Enterprise Data Warehouse

- PCG building warehouse, based on State Core Model (CEDS)
- Working on completing detailed designs, development underway, ISBE commencing Acceptance Testing
- Targeting end of 2012 for go-live

### 5. Linking of ISBE data with Postsecondary and Employment Data, and use this data for Research and Analysis

- High School to College Success Report published
- Higher Education Consortium (IHEC) ongoing
- Establishing a research agenda (RTTT)
- **Overall**
  - Schedule – Data Warehouse under construction, behind schedule
  - Under original spend plan, in discussions with U.S Dept of Education to repurpose funds

## **ILDS Expansion Grant (ARRA) Status**

---

- **\$11.9M grant, 4 primary outcomes**
- 1. **Establish a Statewide Transcript System for Middle and High School Students**
  - **Statewide Course Classification System and Course collection processes –**
    - In production for High Schools, required for K-8 2012-2013 school year
  - **IGA with ISAC for electronic transcript tool – Docufide**
    - To be available for all high schools and colleges
    - Intent is to transmit ISBE Student ID, statewide course codes
    - 271 schools have requested Docufide, 177 are active
- 2. **Integrate Student-level Data with Teacher and Administrator Data**
  - **Vendor engaged to rewrite Teacher Systems**
    - Implementation planned for Feb. 2013
  - **SIS vendor implemented capability to collect data that links students and teachers, in production for the 2011-2012 school year**

## **ILDS Expansion Grant (ARRA) Status (cont)**

---

### **3. Continued Expansion and Development of Postsecondary Education Data Systems**

- **Working with Postsecondary partners (ICCB, IBHE) to produce the HS2CSR**
- **Piloting the Common Identifier Project**

### **4. Expansion of Early Childhood Data Collection Systems**

- **Expansion of data collection implemented 8/1/2011 for 2011 2012 school year**

#### **Overall**

- **All components are underway or completed, course data collection is earlier than planned**
- **Teacher systems rewrite is on schedule**
- **Higher education work behind original schedule**
- **Under original spend plan**

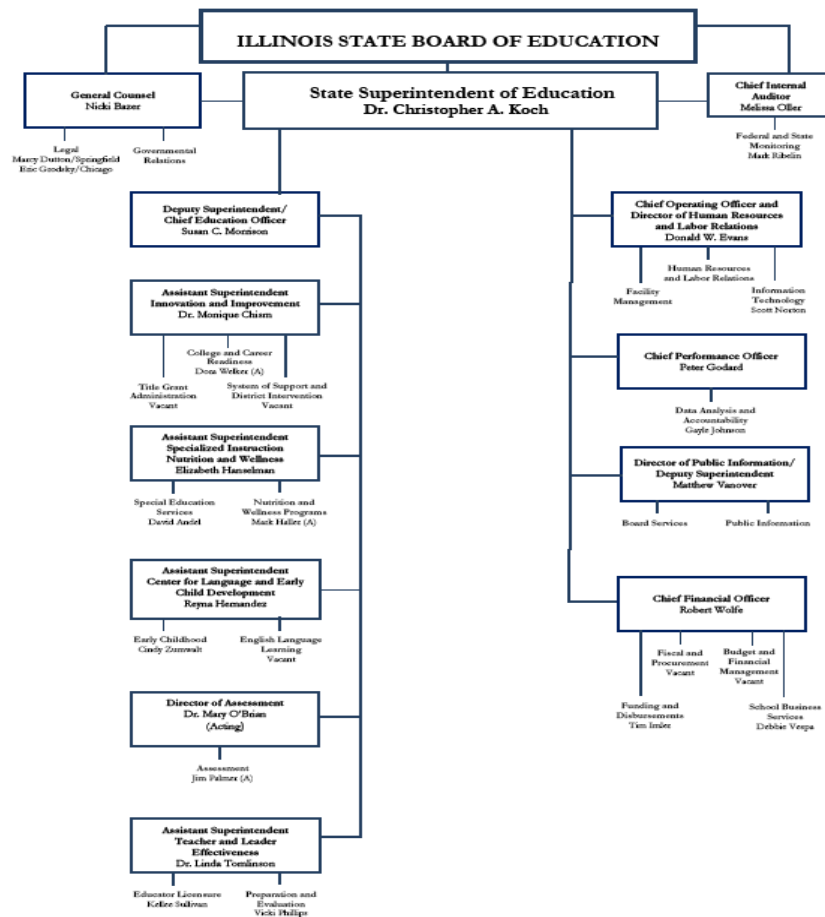
## **ILDS Associated Initiatives**

---

- **Illinois Higher Education Consortium (IHEC)**
  - Conducted their 1<sup>st</sup> Annual meeting
  - First data collection effort is complete
- **Workforce Data Sharing Workgroup**
  - Received Workforce Data Quality Initiative grant
  - Multi-agency membership, evolving towards technical advisory role
  - Common identifier initiative
  - Targeted to support WDQI, Pipeline Analysis
- **SLC, ISLE**
- **New State Report Card - RTTT**

# ISBE Reorganization

- Chief Performance Officer
  - Role and Responsibilities
  - Center for Performance



Revised 09-23-12



# Strategic Plan: ISBE Center for Performance

**Our Mission: Serving school districts and ISBE staff by conducting strategic analyses, building data tools, and facilitating education policy research that informs decision making and professional practice**

## Strategic Analytics

### Goals

- Major initiatives and programs are grounded in stakeholder feedback, accurate and timely data, research and best practice; strategic plans with clearly articulated priorities and deliverables are in place to best assure performance tracking and continuous improvement review
- ISBE strategy and progress are coherently communicated to stakeholders
- Research partners target policy research to critical, timely issues

### Workstreams

- Provide to key initiative owners support for creating indicators of success, facilitating continuous improvement reviews, assisting with process improvement, and conducting strategic analysis to inform decisions
- Collaborate with CFO on Performance-Based Budgeting
- Make available to ISBE senior staff, State Board members, and legislators pertinent updates on performance data trends and strategic analysis
- Collaborating with ICEPR, maintain statewide research agenda and methods for disseminating research results
- Review and approve research proposals and establish data sharing agreements with strategic research partners

### FY 2013 Priorities

1. Develop and lead annual strategic planning process for key agency programs and initiatives to identify goals, workstreams, priorities, and indicators of success
2. Create and implement strategic communications plan for performance data, research, and analytics
3. Develop and implement a scope of work for continuous improvement support services aimed at finding efficiencies and improving outcomes
4. Build consortium partnerships and internal systems for research proposal approval and data access
5. Conduct student and teacher surveys on the 5 Essentials for School Success
6. Conduct research on measuring student academic growth

## Performance Data & Accountability

### Goals

- Performance standards and measurement are meaningful and valid
- Parents, communities, and school/district staff have ready access to understandable and relevant performance data
- Teachers have access to tools that leverage data to facilitate personalized instruction for students
- Internal users have access to data needed to inform decision making

### Workstreams

- Ensure LDS contains relevant data and clearly-defined business logic to support strategic analytics and research, as well as production of all required performance metrics and compliance reporting
- Provide business analyst support to data collection and warehousing efforts
- Develop and maintain metadata on collected data elements
- Collaborate with Data Collection & Reporting to make data and documentation publicly accessible on isbe.net
- Generate state school report cards
- Support ISLE/SLC implementation (with Special Initiatives Support)
- Ensure internal data users are properly trained to efficiently and effectively access and use data, as necessary and appropriate

### FY 2013 Priorities

1. Implement revised accountability system and revised school report card
2. Catalog performance metrics and create technical and non-technical metric guides for all performance metrics
3. Develop standardized analyst views in LDS for performance metrics/data
4. Build Professional Learning Community for data users across agency
5. Finalize teacher of record definition and plan any necessary data collection modifications
6. Implement data governance process

# Strategic Plan: ISBE Center for Performance

**Our Mission: Serving school districts and ISBE staff by conducting strategic analyses, building data tools, and facilitating education policy research that inform decision making and professional practice**

## Data Collection & Reporting

### Goals

- Districts receive efficient and effective support for reporting accurate and timely data to the state, including through continued elimination of redundant, outdated, or conceptually flawed data collection
- Tools are in place to ensure that legislatively mandated and other required reporting deadlines are met and data requests are completed on a timely basis
- Data quality is monitored and actively managed in source systems

### Workstreams

- Manage district data collection
- Complete mandated state and federal reports, competitive federal grant proposals, and federal performance reports
- Coordinate data request fulfillment (e.g., research requests, FOIA)
- Collaborate with IT on development of data collection and reporting tools
- Maintain data for public access on isbe.net website

### SY2012-13 Priorities

1. Establish a calendar for data collection and develop a communications plan and tracking tool for district use
2. Collaborating with Performance Data & Accountability, develop a data quality rating system with a supporting plan to monitor and assist districts in improving data quality
3. Maximize efficiencies to reduce reporting burden (through streamlining processes, amending state statutes and rules, and revising work product format)
4. Develop ticketing system and streamline approval process for data requests
5. Develop ticketing system and streamline process for district inquiries
6. Make raw aggregate data and more concise reporting available on isbe.net

## Special Initiative Support

### Goals

- The agency's reform agenda is supported by effective project management
- Special initiatives are managed in collaboration with subject matter experts and transitioned for long-term success upon completion
- Key stakeholders (e.g., funders, program administrators, senior leadership) receive timely, succinct communication on project status

### Workstreams

- Provide project management support for the Illinois Longitudinal Data System (ILDS)
- Provide project management support for the Illinois Shared Learning Environment (ISLE)/Shared Learning Collaborative (SLC)
- Provide strategic data support for grant applications and grant reporting

### SY2012-13 Priorities

1. Ensure high-quality project charters, project plans and project dashboards are in place for special initiatives
2. Provide project governance/management for strategic initiatives with dashboard/status reviews to occur at least monthly or more frequently as needed
3. Complete existing LDS scope and draft/implement an action plan to best utilize funding and increase data quality
4. Work closely with the division of Information Technology (IT) and the IT steering committee to eliminate redundant data collection and ensure data-related IT projects accomplish objectives stated in project charters and meet cost and time goals

## **New ILDS Outcomes – Repurposing ILDS funds**

---

- **Adding outcomes to improve access to data, adding key infrastructure components**
- **Activities targeted to complete June, 2013**
  
- **Metadata Management (ER Studio)**
  - Metadata
  - Data dictionary, data lineage
- **Knowledge Management System (SharePoint)**
  - Project dashboards
  - Collaboration
  - Stakeholder communications
  - Policy libraries
  - Workflow management

## **New ILDS Outcomes – Repurposing ILDS funds**

---

- **Redesign of data portals (ISBE, IIRC, etc.)**
  - Illinois.gov
  - Statewide ILDS portal
  - Data requests, research data sets, FOIA data
  - Data visualization, GIS
- **Performance Metrics**
  - Performance Based Budgeting Metrics
  - ESEA Metrics
  - ILDS based Growth Model
  - District Data Quality Dashboards
- **Analytics**
  - Acquire analytics tools (SAS)
  - Develop internal analytics capacity
  - Extend ILDS portal to make metrics and analytics publicly accessible

## **New ILDS Outcomes – Repurposing ILDS funds**

---

- **Multi-agency Data Governance**
  - Data request tracking
  - Common identifier platform and processes
  - Common data repository
  
- **High School to College Success Report**
  - Online report
  - National Student Clearinghouse data
  
- **Data Integration**
  - IIRC
  - SLI/ISLE
  - Data exchange, data ingestion
  - Statewide data access and identity management

## **ILDS Statewide Business Architecture**

---

- **Needed to link and share data between the data owners, systems to build out ILDS**
- **Need to turn data into information that helps guide the delivery of education services**
- **Business Architecture**
  - **Intended to incorporate a technical infrastructure that supports data interchange**
  - **Supports the numerous business and program areas that the data integration and exchange are targeted to support**

## ILDS Statewide Business Architecture

---

- **Engage in process to develop business use cases (usage scenarios)**
- **Include stakeholders from:**
  - **ISBE Information Technology**
  - **ISBE data users - data analytics**
  - **SLI**
  - **Illini Cloud**
  - **Postsecondary**
  - **Workforce - WDQI**
  - **Teacher data use cases – who can help create, will SLI use cases provide this?**
  - **Principals, administrators**
  - **Public, parents, students**
  - **Legislators**
  - **Researchers**
  - **ILDS Data Advisory Committee, P-20 council**

## ILDS Statewide Business Architecture

---

- Use cases should include role and benefits statement:

As a “role” I want “specify a want or need”  
so I can “specify an outcome or benefit”.

For example:

“In my role as Chief Performance Officer I need an integrated set of data and tools that enables the analysis of data and the generation of metrics that provide useful and timely information to school districts, schools, and teachers in the classroom.”

- Let’s create some use cases!



## Teacher of Record

---

- **Current data collection to establish student teacher link:**
  - SIS is collecting data
  - Current values set for collection:
    - Teacher of Record
    - Professional Contributor
    - Student Teacher
    - Substitute Teacher
    - Reading/Math Specialist
    - Technology Specialist
    - Social Worker/Psychologist/Counselor
    - Speech/Language Pathologist
    - Teacher of Record – Self-Contained Special Education Classroom
  - High school data required 2012 school year
  - K-8 data collection optional 2012, required 2013
  - Link is at the classroom level
  - Targeting to add functionality for individual student teacher link

## Teacher of Record

---

- **Why is ISBE collecting student teacher link?**
  - Evaluation of teacher preparation programs - part of the P-20 Act
  - Use of growth as part of the teacher evaluation and principal evaluation conversations
  - SFSF Reporting requirements
  - America Competes and Data Quality Campaign requirements
  - ESEA waiver (NCLB waiver) will include the use of student growth data
  
- **Need to establish policy for definition of teacher of record**
  - Policy will need to go to Superintendent, Board for approval

## Sustaining the ILDS Data Advisory Committee

---

- **Role**
- **Membership**
- **Relationship with P-20 Council**
- **Multi-agency Data Governance**

## Wrap Up and Adjournment

---

- **2012 meeting schedule**
  - **Tuesday, December 4**
- **Communications**
  - **Contact Information**
    - **Committee Email: [ILDSDAC@isbe.net](mailto:ILDSDAC@isbe.net)**
    - **Committee Web Site**