



Review of Procedures for Scoring Growth

IL Technical Advisory Committee Meeting
December 11-12, 2019

Growth

- For elementary and middle schools, growth carries a nominal weight of 50%
- Growth is measured by Mean Student Growth Percentile (MSGP)
- MSGP is translated to a growth indicator score
 - $(MSGP * 20/9) - 62.22$
 - $MSGP \geq 73 = 100$ points, $MSGP \geq 28$ points = 0 points
- Why is MSGP rescaled?
 - At the school level very low and very high MSGP are rare
 - Rescaling better matches the theoretical scale to the actual scale, which promotes the intent of the nominal weights

Previous TAC Guidance

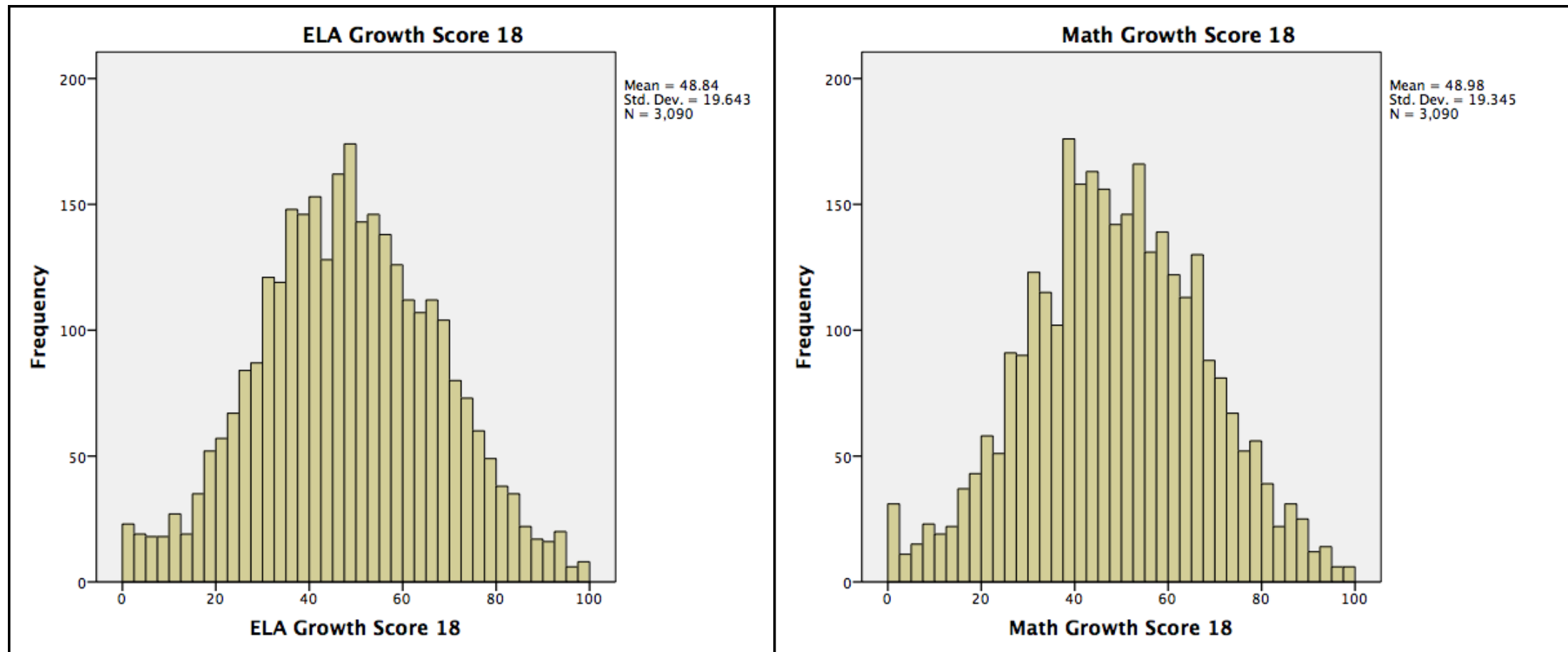
In general, the upper limit of the effective range should define a point which is demonstrably attainable by the top schools (e.g., approximately 10% of schools should exceed the upper limit) and the lower limit should be set at a point below which only a small percentage of the lowest performing schools are classified. The rationale is to ensure the system is designed to differentiate across the full scale intended by the system designers and that growth points are meaningful. (p.13)

- Final Recommendations from the Illinois Accountability Technical Advisory Committee (TAC): A Report to the Illinois State Board of Education. June 28, 2018.

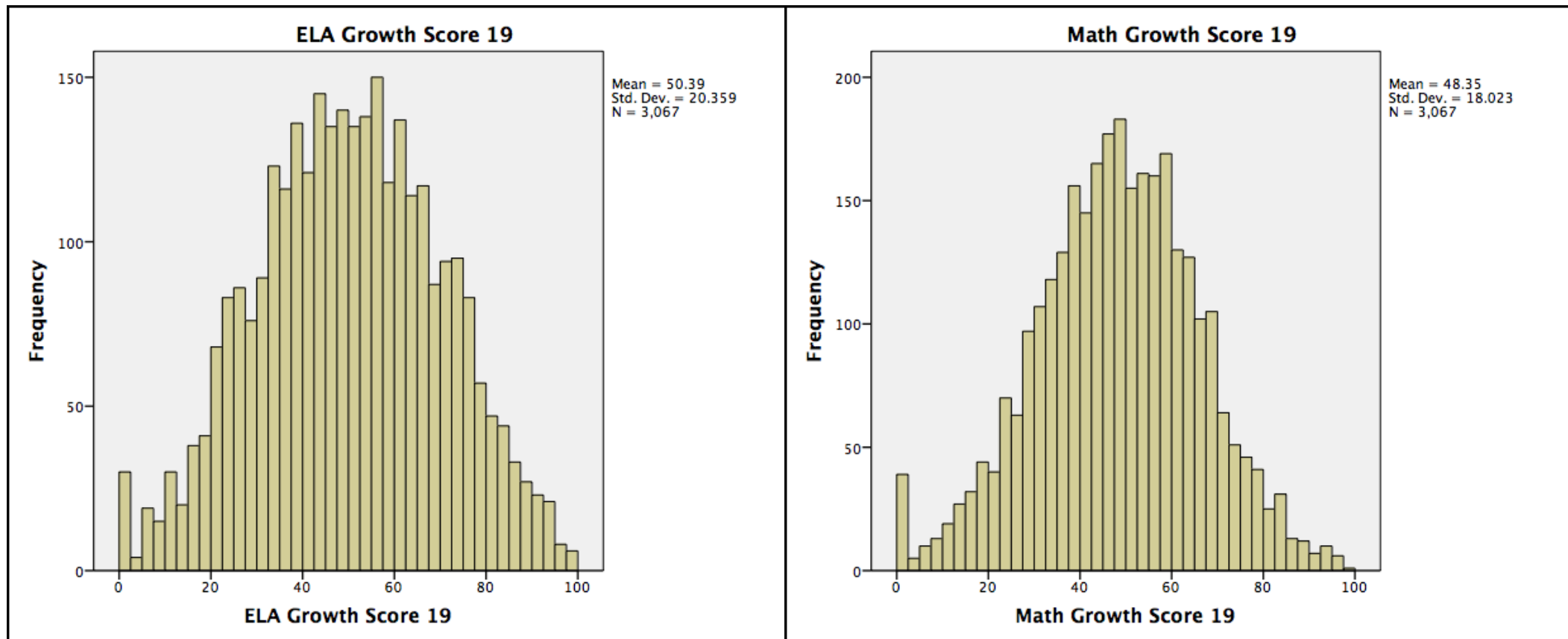
Growth Scale

MSGP	Growth Score	MSGP	Growth Score
<28	0	51	51
29	2	52	53
30	4	53	56
31	7	54	58
32	9	55	60
33	11	56	62
34	13	57	64
35	16	58	67
36	18	59	69
37	20	60	71
38	22	61	73
39	24	62	76
40	27	63	78
41	29	64	80
42	31	65	82
43	33	66	84
44	36	67	87
45	38	68	89
46	40	69	91
47	42	70	93
48	44	71	96
49	47	72	98
50	49	73>	100

2018 School Growth Scores



2019 School Growth Scores



Growth Scores by Percentile

- Based on school distribution of ‘all student’ group in 2018 and 2019

Percentile	2018 ELA Growth Score	2018 Math Growth Score	2019 ELA Growth Score	2019 Math Growth Score
10	24.0	24.9	23.7	25.3
20	32.3	32.5	32.8	33.6
30	38.0	39.0	38.9	39.4
40	43.3	43.5	44.8	44.2
50	48.4	48.6	50.4	48.5
60	53.6	53.8	55.9	53.2
70	58.8	59.2	61.6	58.1
80	65.8	65.5	68.4	63.3
90	74.5	73.9	76.9	70.5

Discussion Questions

- What feedback does the TAC have about the method for translating MSGPs to a growth score?
 - Does the scaling reflect a reasonable effective range?
 - Are the score points associated with the values appropriate?
- Does the TAC recommend any revisions to the current methodology or exploration of new approaches?
- What additional analyses does the TAC recommend?