



Alternative Schools in Accountability

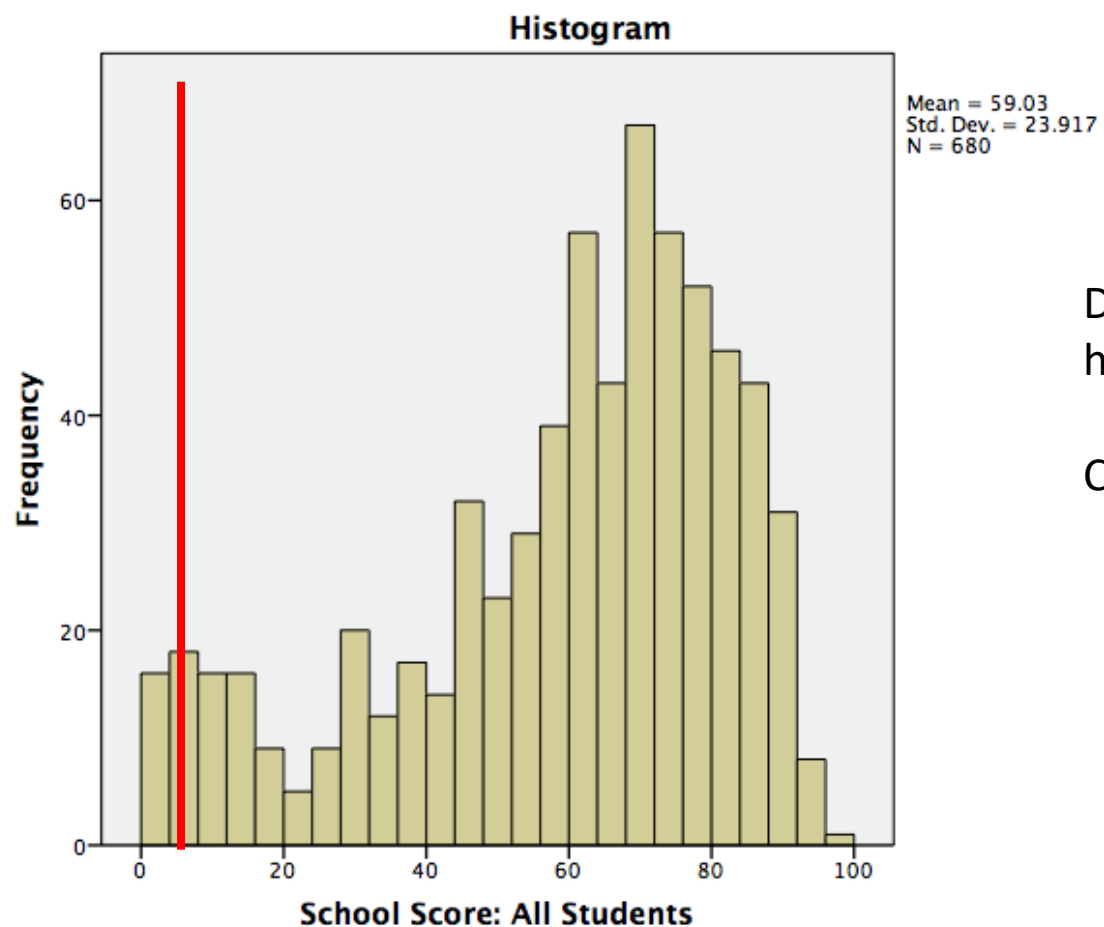
IL Technical Advisory Committee Meeting

December 11-12, 2019

Introduction

- The threshold for identifying underperforming schools is the lowest 5%
- That value is particularly low for high schools: 8.17, compared to 35.33 for elementary/ middle schools
- One reason for this may be that alternative schools, which typically have lower overall index scores, are ‘suppressing’ the HS cut
- Consequently, few traditional high schools are flagged as underperforming

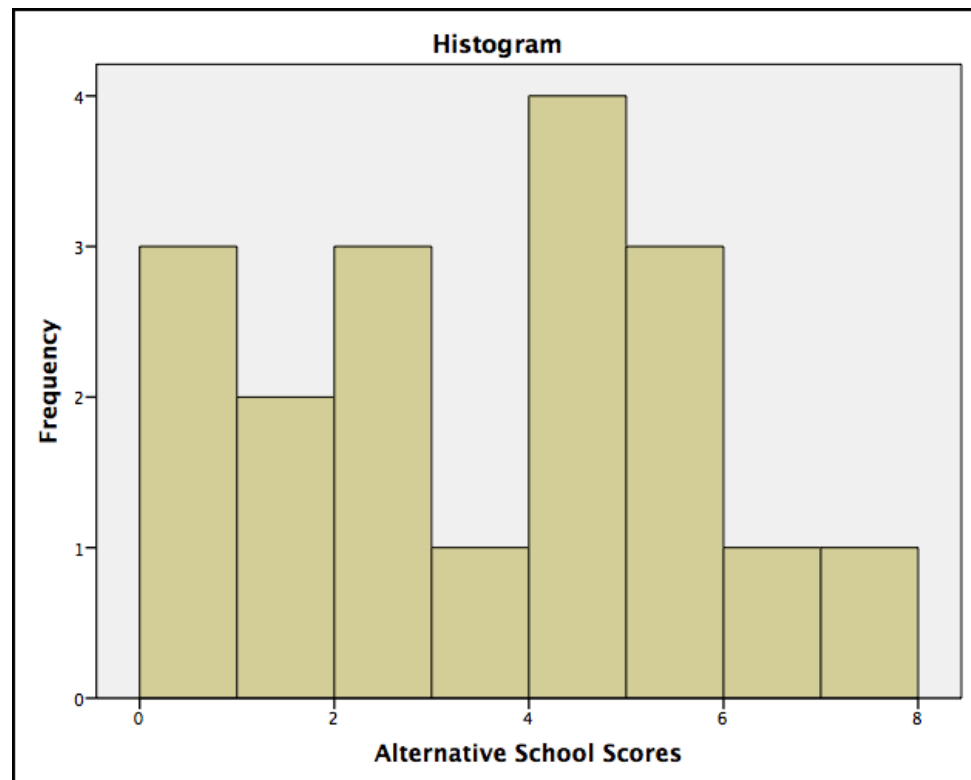
Distribution of School Scores for All Schools



Distribution of school scores for all high schools

Cut for lowest 5% is 8.17

Distribution of Alternative School Scores



Mean = 3.65

SD = 2.1

Range: 1-8

N=18

All Alternative Schools are in the 'Lowest Performing' category

Alternative Schools comprise 32% of all schools rated 'Lowest Performing'

If alternative schools were removed from the distribution, the lowest performing cut would increase to approximately 12

Discussion Questions

- What recommendations does the TAC have to address the impact of alternative schools in accountability?
- Should ISBE consider an adjustment to the HS cut for lowest performing in the future?
- Given the challenges of applying a ‘one-size-fits-all’ ESSA model for alternative schools, some states produce supplemental information for alternative schools. Is this something ISBE should explore? If so, what approaches are promising?