



Summary of Indicator Performance

IL Technical Advisory Committee Meeting

April 25-26, 2019

Goals

- Look at indicator patterns and relationships to see if they demonstrate desired design principles.
- Help identify potential areas for system improvement (e.g., refinement of business rules or scoring procedures)
- Identify additional analyses for future consideration.

Background

- For each indicator in the IL accountability system, *indicator performance levels (i.e., measures)* are translated to *indicator scores* which range from 0-100.
- To the greatest extent possible, the business rules that guide the allocation of points to schools for each indicator were intended to follow these guidelines:
 - If a school Meet/Exceeds the statewide long term goal, interim target or other state defined expectation for performance - assign full points (i.e., 100)
 - If a school does not meet annual expectation: Assign points representing the proportion of the target achieved within the given year (1-99)
 - Percent of interim target met (e.g., academic achievement)
 - Proportion of points obtained within an “effective range” defined by a state specified maximum and minimum value

Focal Questions

- To what extent do the indicators provide for meaningful differentiation among schools – both prior to and after scoring?
- How do indicator scores relate to each other and the overall school index score?
- What is the relationship between school factors such as overall school enrollment (n-size) and poverty size with the overall school index score and each indicator score?

Elementary School Indicator Performance

Distributions and
Correlations

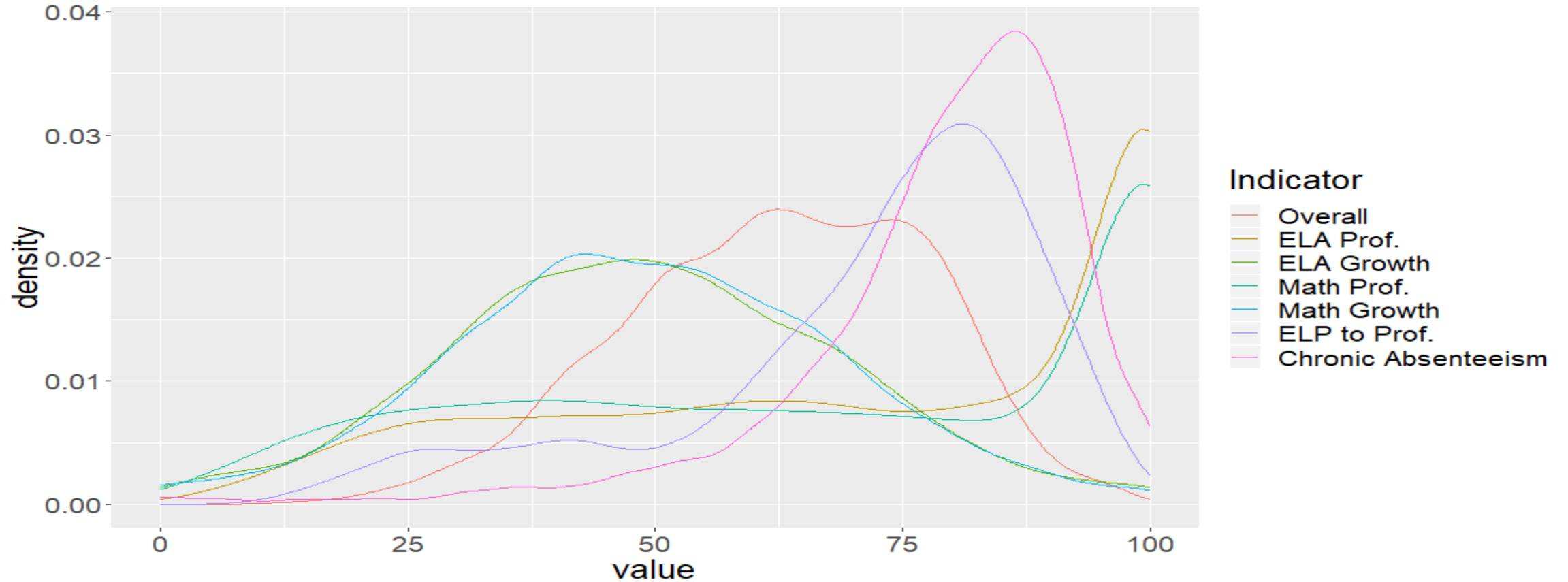
ES - Summary Table of *Measures*

	N	Mean	Median	SD
ELA Proficiency Rate	2866	36.0	34.9	18.8
ELA Growth (Mean SGP)	2765	50.3	50.2	9.1
Math Proficiency Rate	2861	31.0	28.2	18.8
Math Growth (Mean SGP)	2767	50.3	50.2	8.8
Chronic Absenteeism	2935	12.6	10.2	10.9

Indicator Score Distributions - ES Overall

	N	Mean	Median	SD
Overall	3097	62.39	63.04	15.07
ELA Prof.	3096	72.14	80.57	28.64
ELA Growth	3070	49.16	48.59	19.31
Math Prof.	3091	67.52	72.66	30.88
Math Growth	3061	49.45	48.89	18.84
ELP to Prof.	1229	70.72	75.84	18.74
Chronic Absenteeism	3080	79.00	81.87	14.25

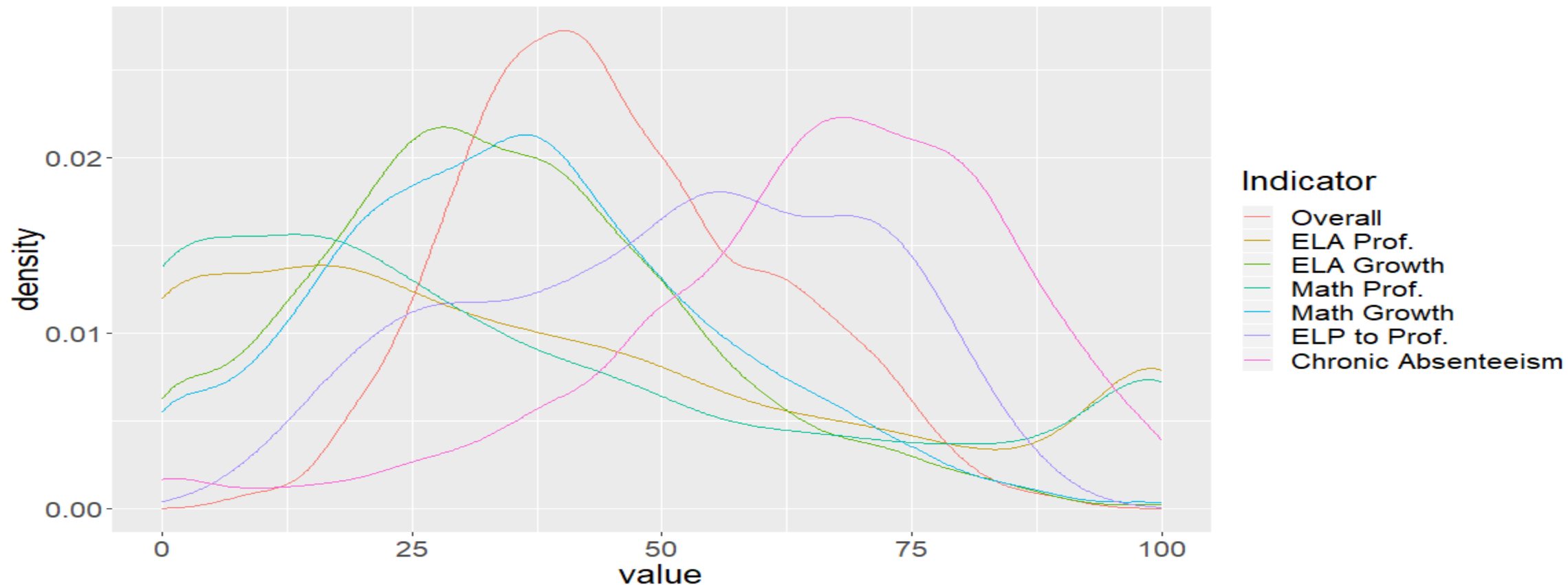
Indicator Distributions - ES Overall



Indicator Score Distributions - ES IEP

	N	Mean	Median	SD
Overall	1812	45.46	43.25	15.29
ELA Prof.	1535	46.32	38.78	30.31
ELA Growth	1708	35.12	33.43	18.15
Math Prof.	1497	44.02	34.35	30.86
Math Growth	1706	37.03	35.72	18.58
ELP to Prof.	400	50.72	53.17	19.66
Chronic Absenteeism	1767	65.96	68.00	18.89

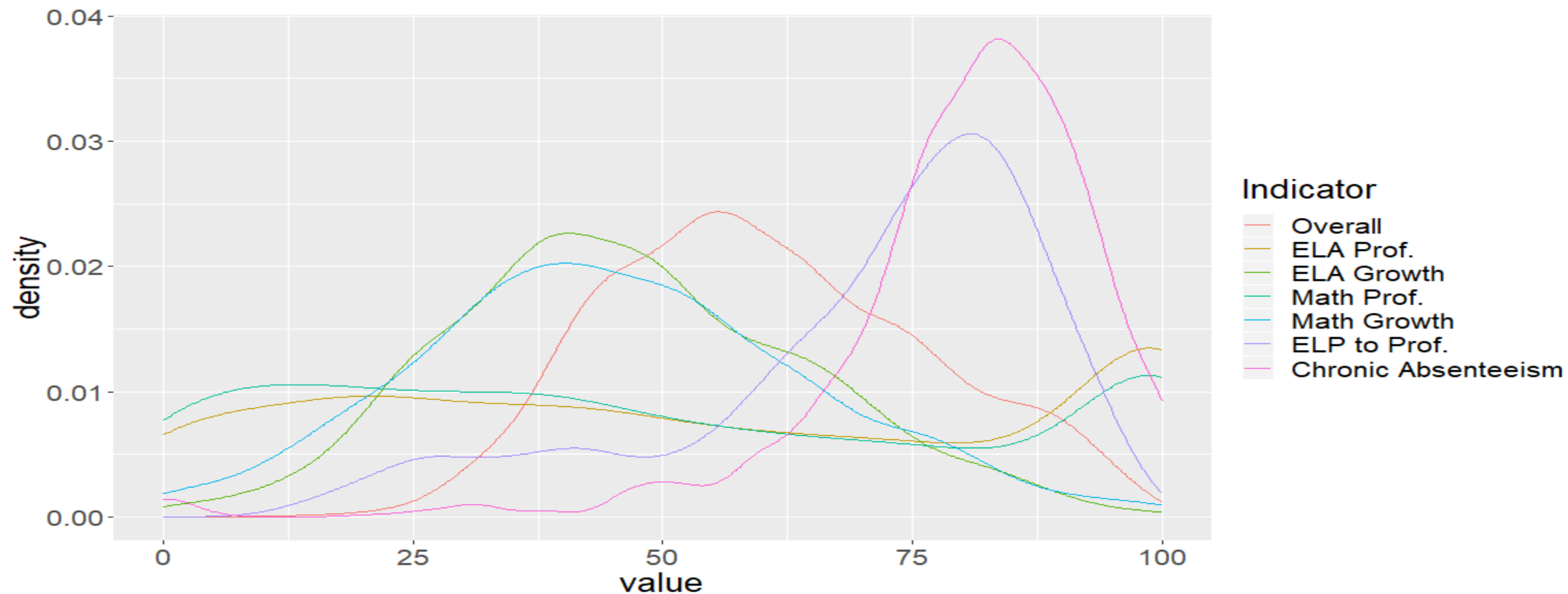
Indicator Distributions - ES IEP



Indicator Distributions - ES LEP

	N	Mean	Median	SD
Overall	1147	60.40	58.79	15.98
ELA Prof.	1055	57.89	55.85	32.64
ELA Growth	926	46.31	44.88	17.84
Math Prof.	1048	53.62	48.98	32.44
Math Growth	934	45.57	44.12	19.36
ELP to Prof.	1141	69.85	74.98	18.95
Chronic Absenteeism	1139	80.54	82.49	12.84

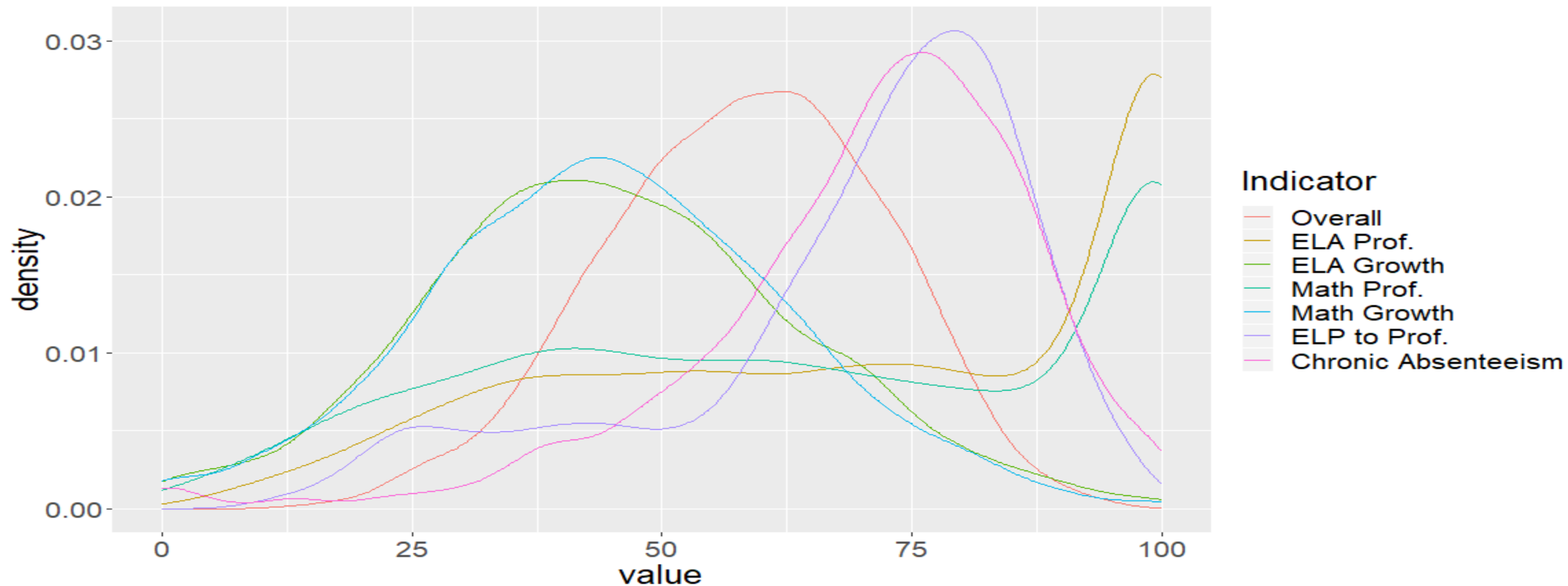
Indicator Distributions - ES LEP



Indicator Distributions - ES LOW INCOME

	N	Mean	Median	SD
Overall	2741	58.19	58.68	13.94
ELA Prof.	2741	71.25	76.17	27.52
ELA Growth	2701	45.50	44.57	18.39
Math Prof.	2731	64.70	65.18	29.31
Math Growth	2694	45.24	44.46	17.65
ELP to Prof.	1005	68.55	73.85	18.90
Chronic Absenteeism	2696	70.96	73.33	16.12

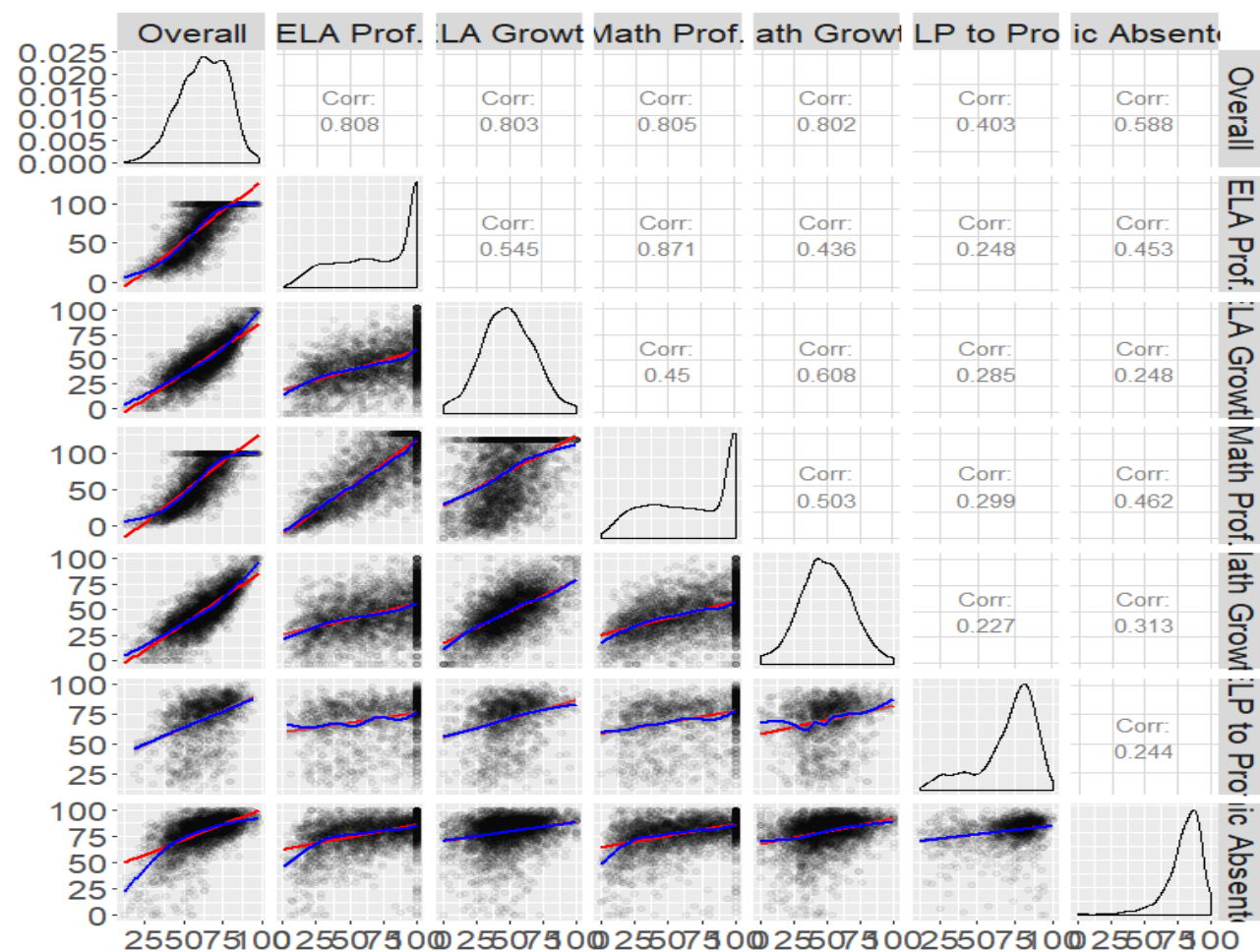
Indicator Distributions - ES LOW INCOME



Indicator Score Correlations - ES Overall

	Overall	ELA Prof.	ELA Growth	Math Prof.	Math Growth	ELP to Prof.	Chronic Absenteeism
Overall	1.00						
ELA Prof.	0.81	1.00					
ELA Growth	0.80	0.55	1.00				
Math Prof.	0.80	0.87	0.45	1.00			
Math Growth	0.80	0.44	0.61	0.50	1.00		
ELP to Prof.	0.40	0.25	0.29	0.30	0.23	1.00	
Chronic Absenteeism	0.59	0.45	0.25	0.46	0.31	0.24	1.00

Indicator Correlations - ES Overall



High School Indicator Performance

Distributions and
Correlations

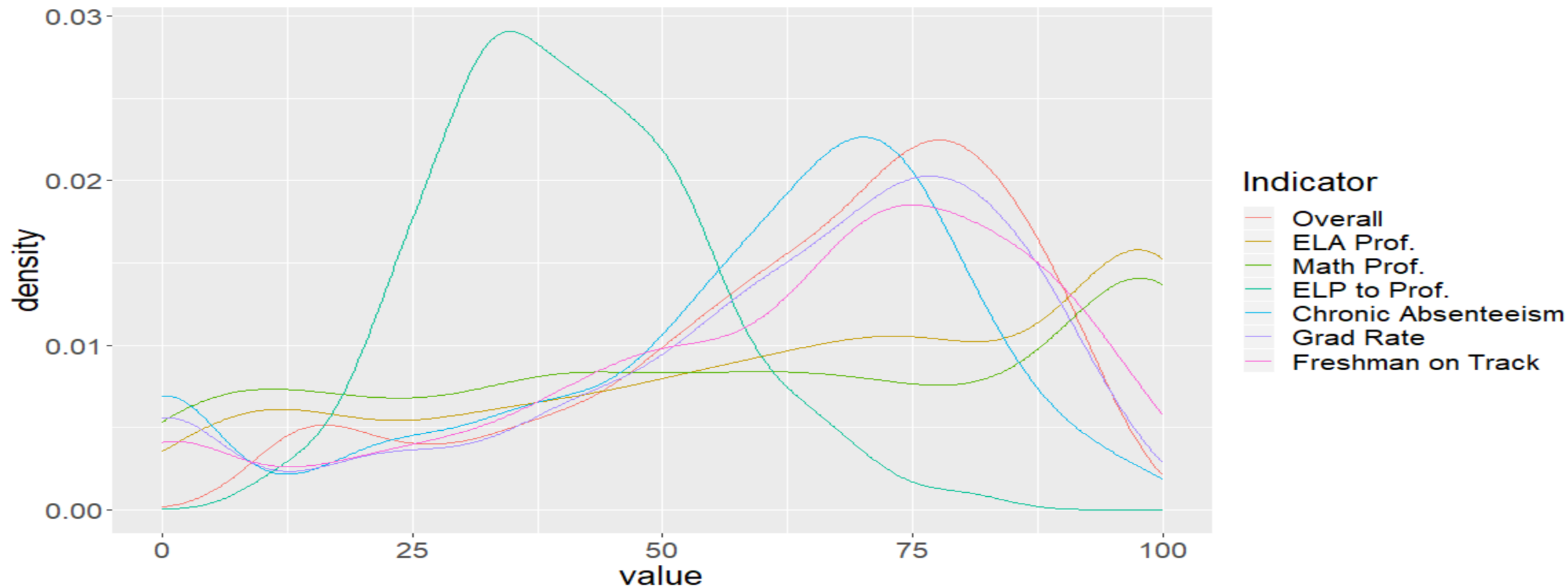
HS - Summary Table of *Measures*

	N	Mean	Median	SD
ELA Proficiency Rate	582	31.8	31.4	17.6
Math Proficiency Rate	568	28.6	26.4	18.1
Chronic Absenteeism	597	25.2	18.1	22.5
9th Grade on Track	575	87.2	90.0	10.4
High School 4-Year Graduation Rate - Total	594	87.3	90.4	11.9

Indicator Distributions - HS Overall

	N	Mean	Median	SD
Overall	678	64.12	69.79	21.47
ELA Prof.	667	65.17	70.37	30.39
Math Prof.	653	61.12	62.39	32.18
ELP to Prof.	210	40.53	39.78	13.19
Chronic Absenteeism	615	61.62	65.57	19.02
Grad Rate	588	65.46	69.68	20.12
Freshman on Track	620	65.73	70.20	22.17

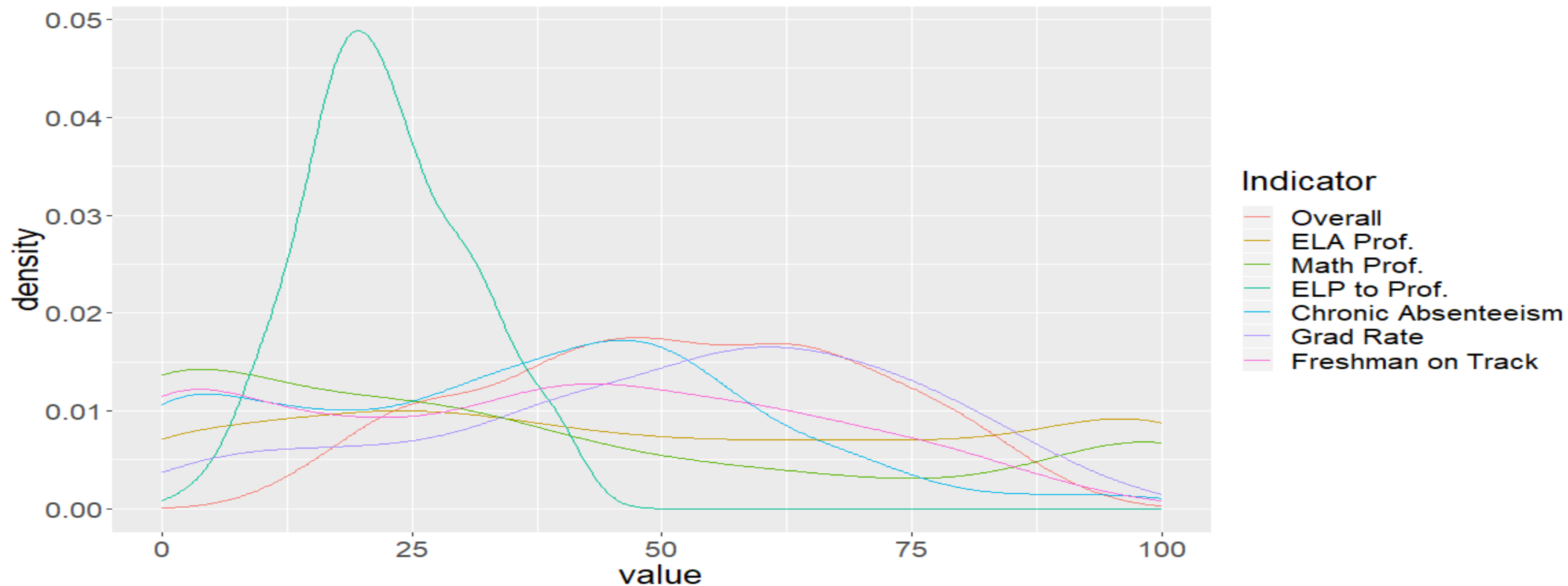
Indicator Distributions - HS Overall



Indicator Distributions - HS IEP

	N	Mean	Median	SD
Overall	285	51.65	51.16	19.02
ELA Prof.	247	57.54	55.79	30.81
Math Prof.	197	52.10	42.05	32.25
ELP to Prof.	121	22.39	21.60	8.18
Chronic Absenteeism	250	40.22	41.72	20.75
Grad Rate	234	52.73	55.48	22.72
Freshman on Track	234	43.50	43.37	23.59

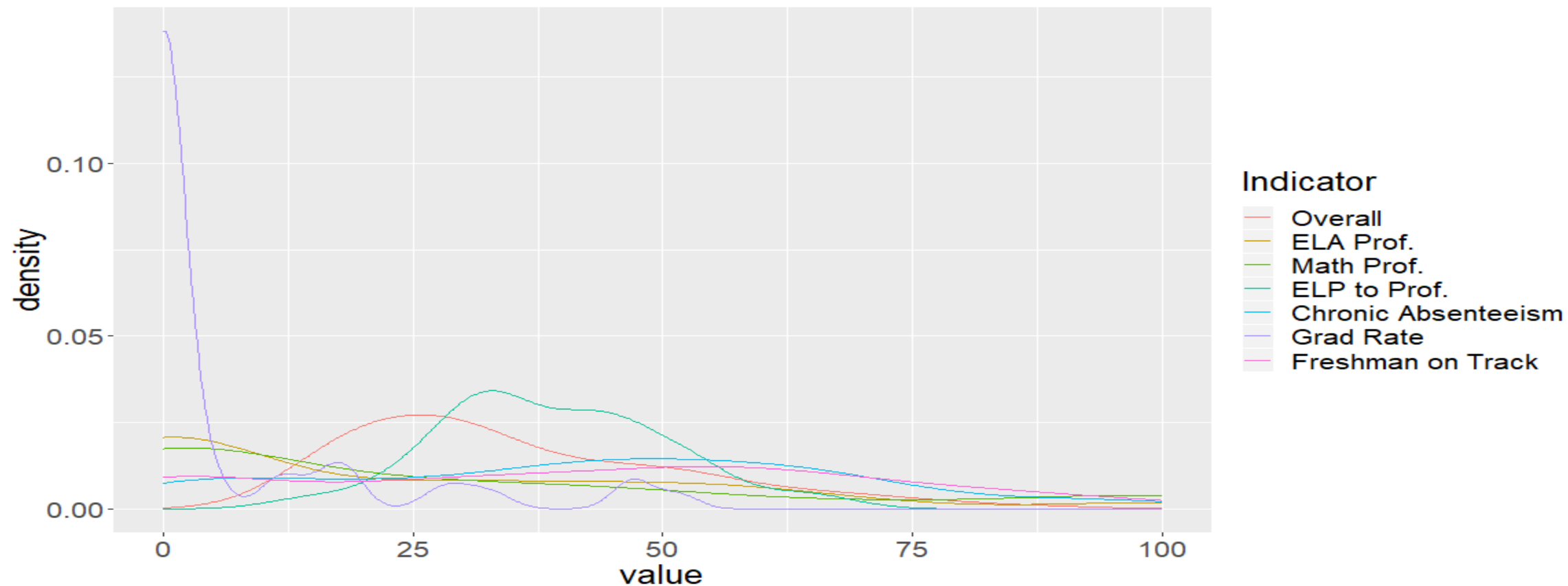
Indicator Distributions - HS IEP



Indicator Distributions - HS LEP

	N	Mean	Median	SD
Overall	109	35.70	30.95	16.81
ELA Prof.	56	45.06	42.94	24.15
Math Prof.	60	48.90	41.26	30.45
ELP to Prof.	109	39.03	37.48	11.38
Chronic Absenteeism	99	46.31	47.32	23.38
Grad Rate	17	20.02	17.34	16.75
Freshman on Track	84	50.11	52.52	24.25

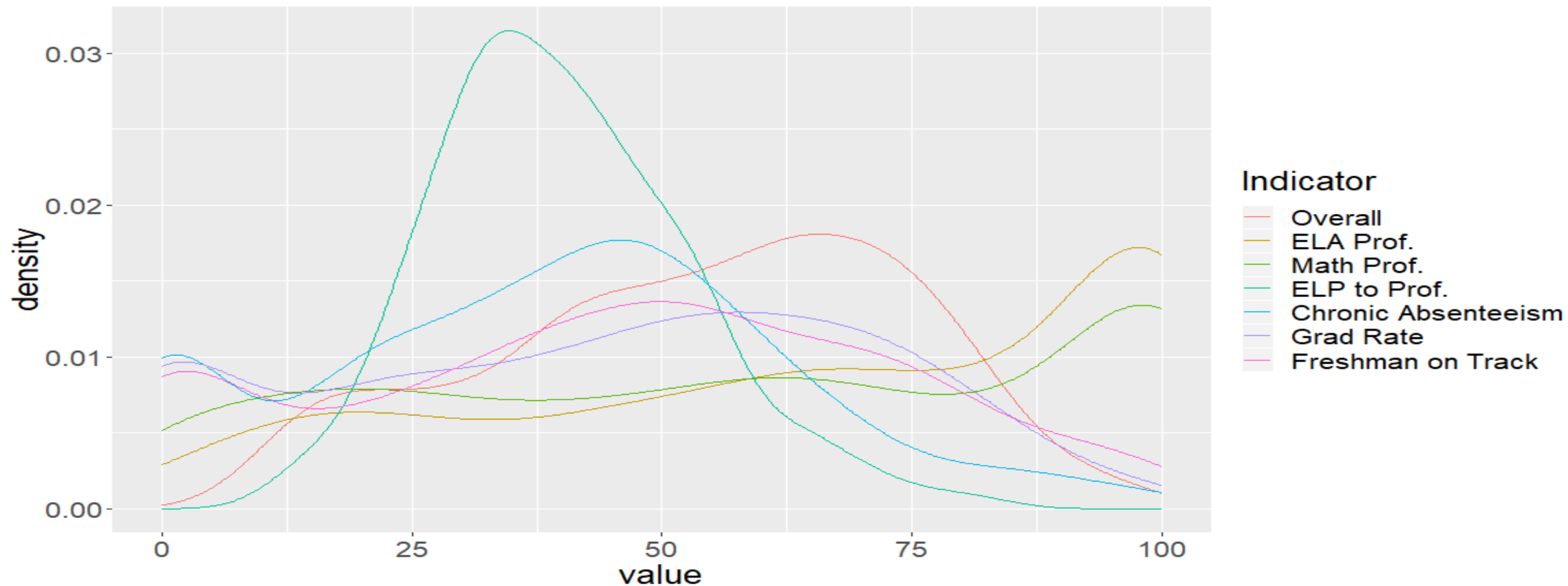
Indicator Distributions - HS LEP



Indicator Distributions - HS LOW INCOME

	N	Mean	Median	SD
Overall	516	53.88	56.20	20.75
ELA Prof.	505	67.45	73.08	30.36
Math Prof.	489	61.86	63.40	31.93
ELP to Prof.	188	39.98	38.75	12.74
Chronic Absenteeism	455	43.33	43.32	20.32
Grad Rate	391	50.10	52.22	23.31
Freshman on Track	431	50.94	50.72	23.99

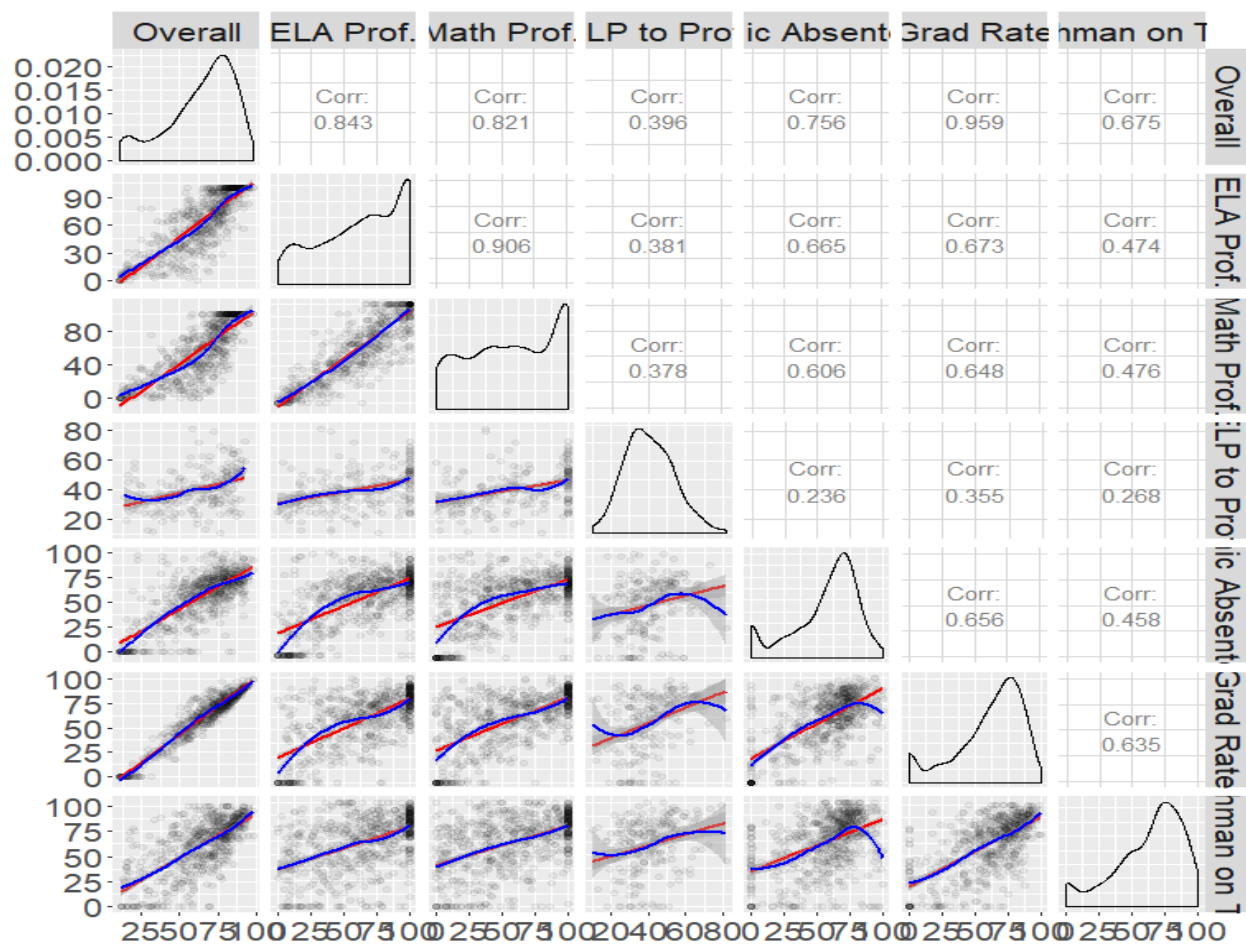
Indicator Distributions - HS LOW INCOME



Indicator Correlations - HS Overall

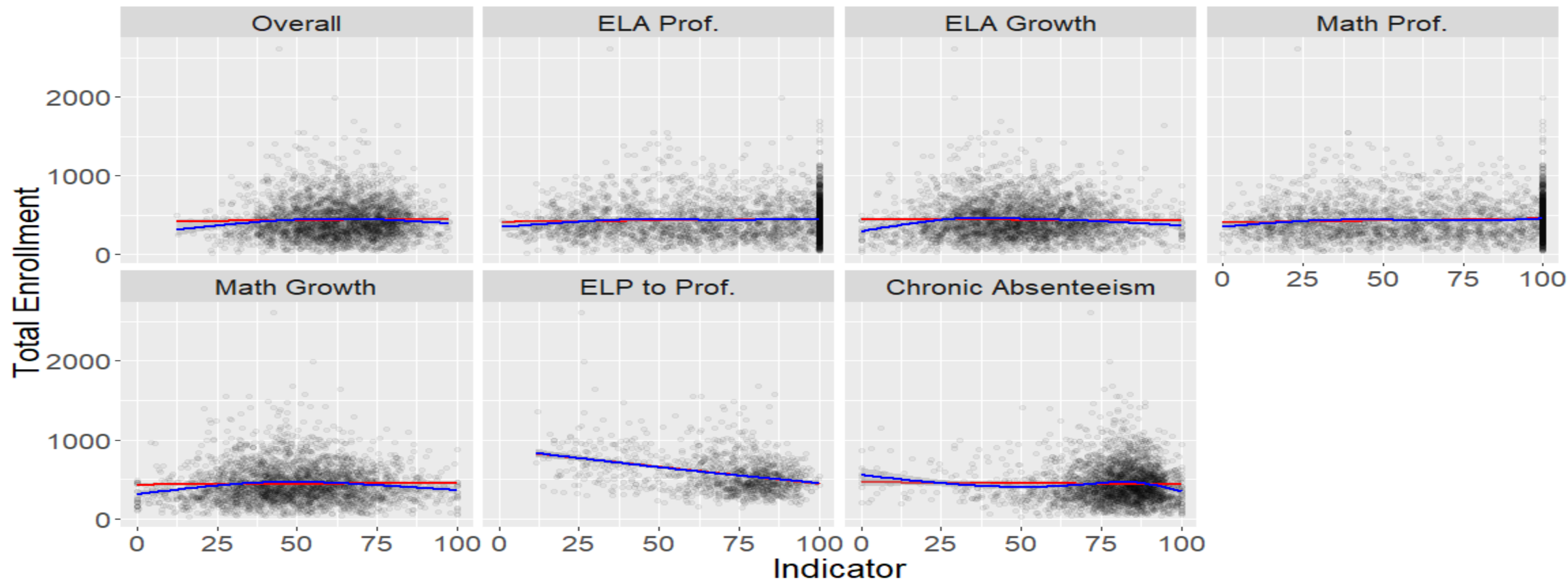
	Overall	ELA Prof.	Math Prof.	ELP to Prof.	Chronic Absenteeism	Grad Rate	Freshman on Track
Overall	1.00						
ELA Prof.	0.84	1.00					
Math Prof.	0.82	0.91	1.00				
ELP to Prof.	0.40	0.38	0.38	1.00			
Chronic Absenteeism	0.76	0.66	0.61	0.24	1.00		
Grad Rate	0.96	0.67	0.65	0.35	0.66	1.00	
Freshman on Track	0.68	0.47	0.48	0.27	0.46	0.64	1.00

Indicator Correlations - HS Overall



Relationships between Indicators, Enrollment Size and Percent Low Income

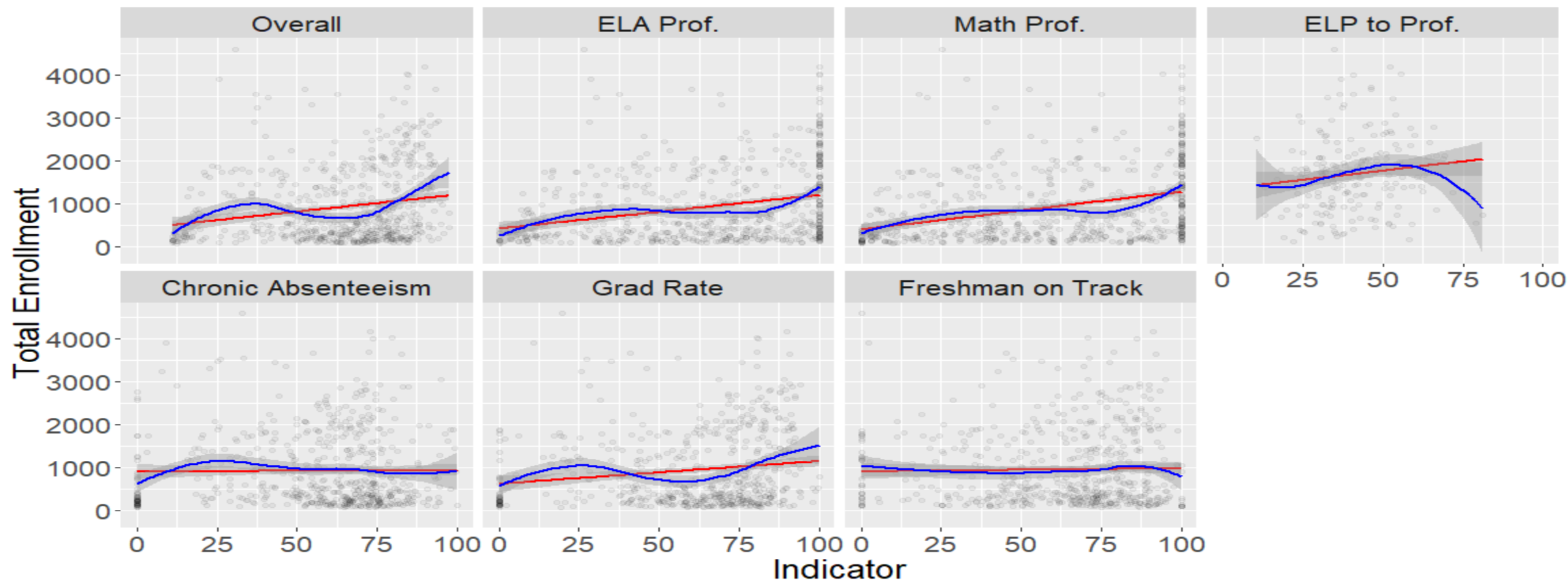
Indicators and Enrollment Size - ES



Relationship with Enrollment Size - ES

Indicator	Cor(Indicator, Enrollment)	N
Overall	0.02	3011
ELA Prof.	0.05	3010
ELA Growth	-0.01	3004
Math Prof.	0.06	3010
Math Growth	0.02	3004
ELP to Prof.	-0.34	1218
Chronic Absenteeism	-0.01	3003

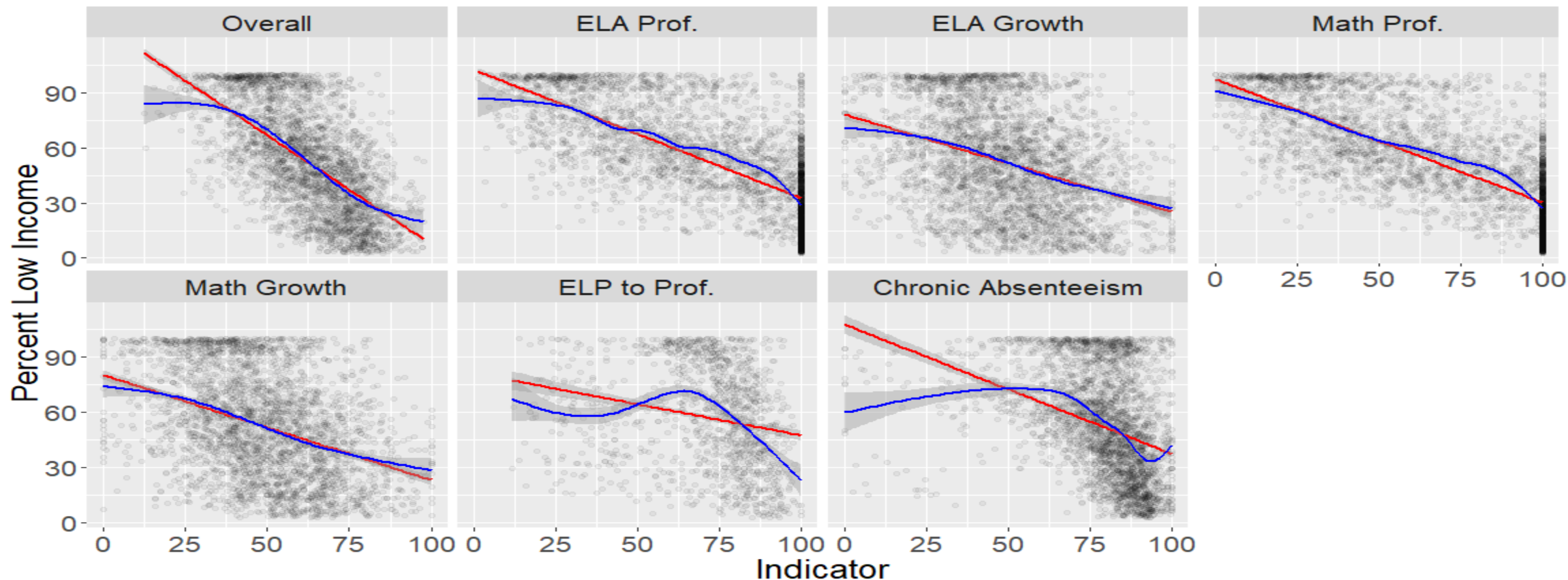
Indicators and Enrollment Size - HS



Relationship with Enrollment Size - HS

Indicator	Cor(Indicator, Enrollment)	N
Overall	0.20	598
ELA Prof.	0.28	598
Math Prof.	0.34	598
ELP to Prof.	0.13	197
Chronic Absenteeism	0.01	597
Grad Rate	0.16	570
Freshman on Track	0.02	575

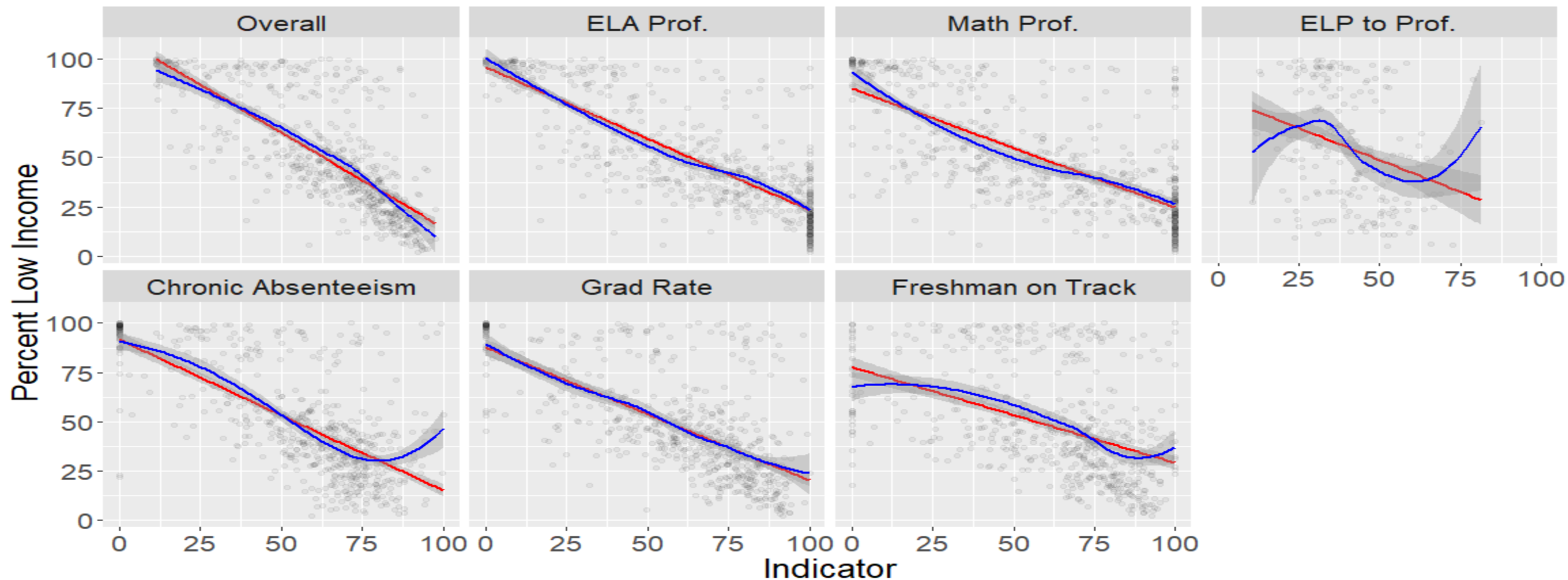
Indicators and Percent Low Income - ES



Relationship with Low Income - ES

Indicator	Cor(Indicator, Percent Low Income)	N
Overall	-0.63	2951
ELA Prof.	-0.71	2950
ELA Growth	-0.37	2944
Math Prof.	-0.74	2950
Math Growth	-0.39	2944
ELP to Prof.	-0.23	1214
Chronic Absenteeism	-0.37	2945

Indicators and Percent Low Income - HS



Relationship with Low Income- HS

Indicator	Cor(Indicator, Percent Low Income)	N
Overall	-0.75	597
ELA Prof.	-0.81	597
Math Prof.	-0.73	597
ELP to Prof.	-0.30	197
Chronic Absenteeism	-0.70	596
Grad Rate	-0.65	569
Freshman on Track	-0.46	574

Indicators and Percent Low Income - HS