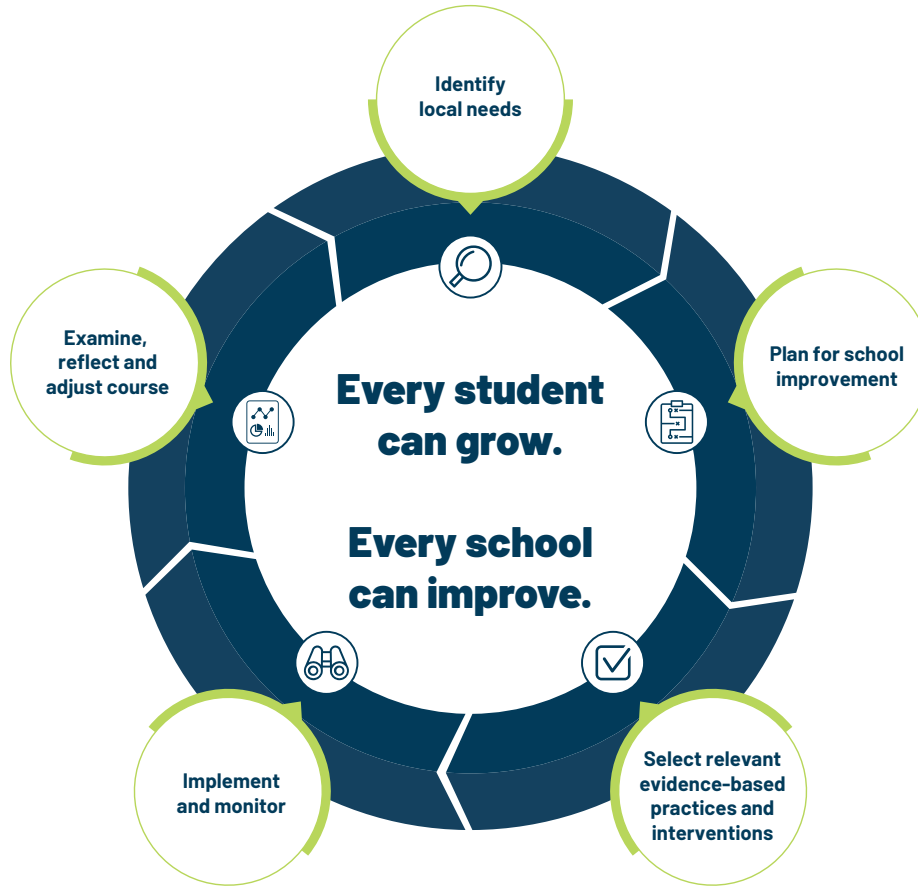


# Continuous School Improvement Model



## Identify local needs (PLANNING YEAR)

- Identify a school leadership team
- Build a stakeholder advisory group
- Conduct a school level needs assessment
- Conduct a root cause analysis
- Present results to the stakeholder advisory group

## Identify local needs (IMPLEMENTATION YEAR)

- Review composition of school leadership team
- Review composition of stakeholder advisory group
- Survey staff on implementation of school improvement plan and future professional development needs



## Plan for school improvement

- Develop a school improvement plan with the following elements:
  - SMART goals
  - Key activities, timelines, and funding sources that address resource inequities, along with people responsible for implementation
  - Local assessment(s) to measure academic progress
  - Monitoring plan that includes all SMART goals



## Select relevant evidence-based practices and interventions

- Confirm evidence-based practices align with ESSA



## Implement and monitor

- Communicate the school improvement plan to all stakeholders
- Implement the school improvement plan
- Monitor implementation and progress toward SMART Goals



## Examine, reflect and adjust course

- Analyze and update the following elements within the school improvement plan:
  - SMART goals
  - Key activities, timelines, and funding sources that address resource inequities, along with people responsible for implementation
  - Local assessment(s) to measure academic progress
  - Monitoring plan that includes all SMART goals